



*Supplement of*

## **Temporal inhomogeneities in high-resolution gridded precipitation products for the southeastern United States**

**Jeremy E. Diem**

*Correspondence to:* Jeremy E. Diem ([jdiem@gsu.edu](mailto:jdiem@gsu.edu))

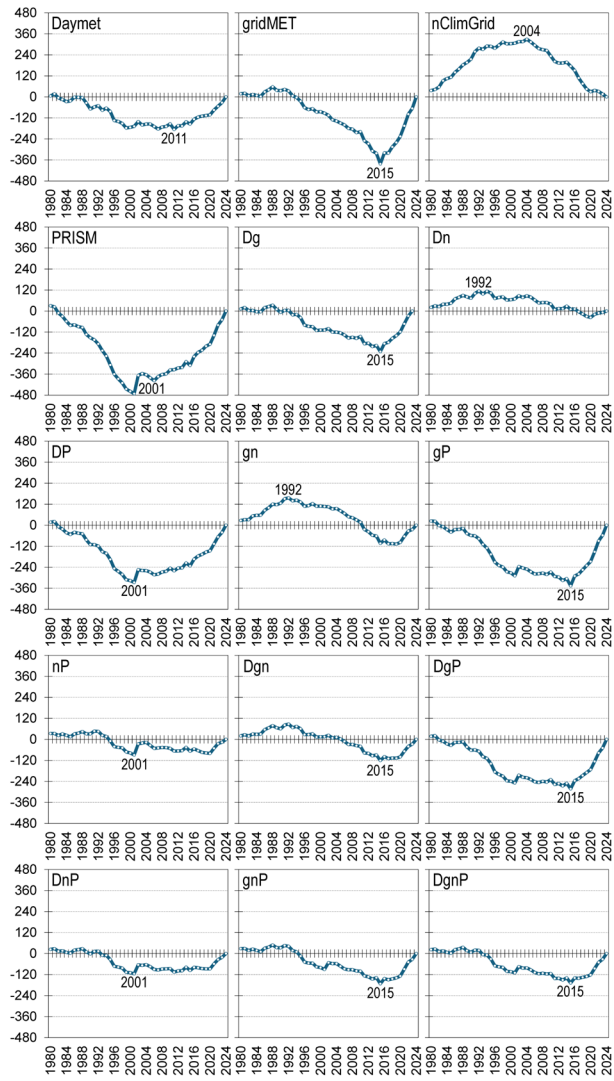
The copyright of individual parts of the supplement might differ from the article licence.

**Contents of this file:**

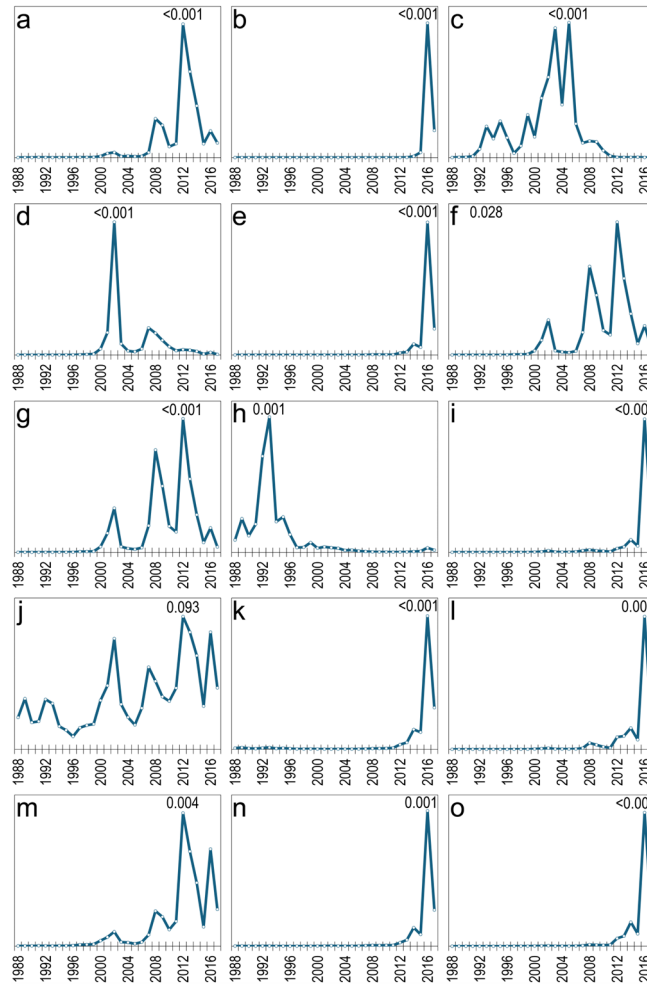
Figures S1 to S4

**Introduction**

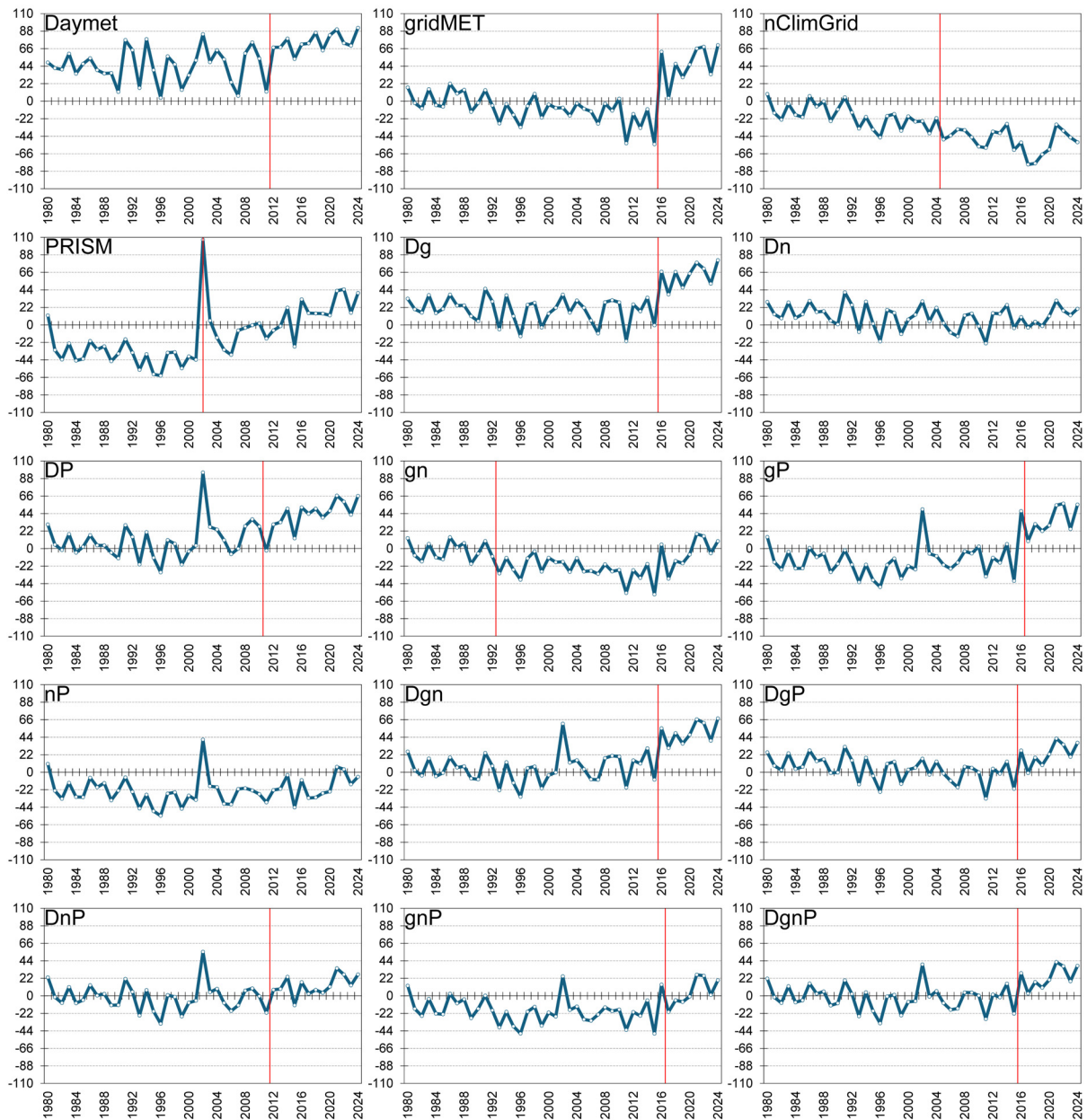
The figures in this document are daily versions of Figures 6–9 (i.e., residual-mass curves, inverse p-values, difference time series, and trends) in the manuscript.



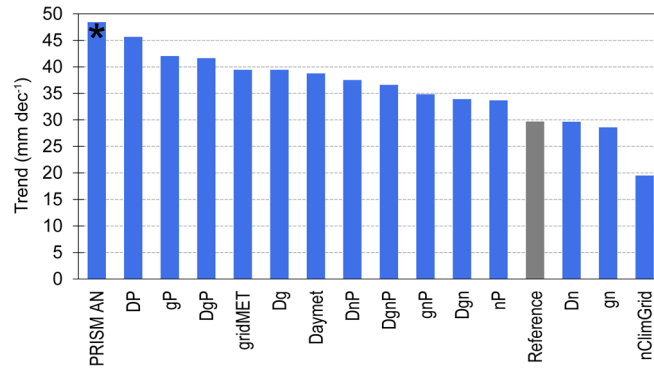
**Figure S1.** Residual-mass curves for products and combination of products. Abbreviations for Daymet, gridMET, nClimGrid, and PRISM AN are D, g, n, and P, respectively.



**Figure S2.** Inverse p-values for (a) Daymet, (b) gridMET, (c) nClimGrid, (d) PRISM AN, (e) Dg, (f) Dn, (g) DP, (h) gn, (i) gP, (j) nP, (k) Dgn, (l) DgP, (m) DnP, (n) gnP, and (o) DgPT. The abbreviations for Daymet, gridMET, nClimGrid, and PRISM are D, g, n, and P, respectively. The two-tailed p-values are from Mann-Whitney  $U$  tests that compared differences from the reference time series before and after each of the years shown (i.e., 1988-2017).



**Figure S3.** Time series of differences between the mean of the 120 references gauges and the means for the southeastern United States that are specific to products and combination of products. The abbreviations for Daymet, gridMET, nClimGrid, and PRISM AN are D, g, n, and P, respectively.



**Figure S4.** Precipitation trends (in mm dec<sup>-1</sup>) for the reference and 15 other time series. Abbreviations for Daymet, gridMET, nClimGrid, and PRISM AN are D, g, n, and P, respectively. The asterisk denotes a significant ( $\alpha = 0.01$ , one-tailed) trend.