



Supplement of

Revealing seasonal plasticity of whole-plant hydraulic properties using sap-flow and stem water-potential monitoring

Zhechen Zhang et al.

Correspondence to: Huade Guan (huade.guan@flinders.edu.au)

The copyright of individual parts of the supplement might differ from the article licence.

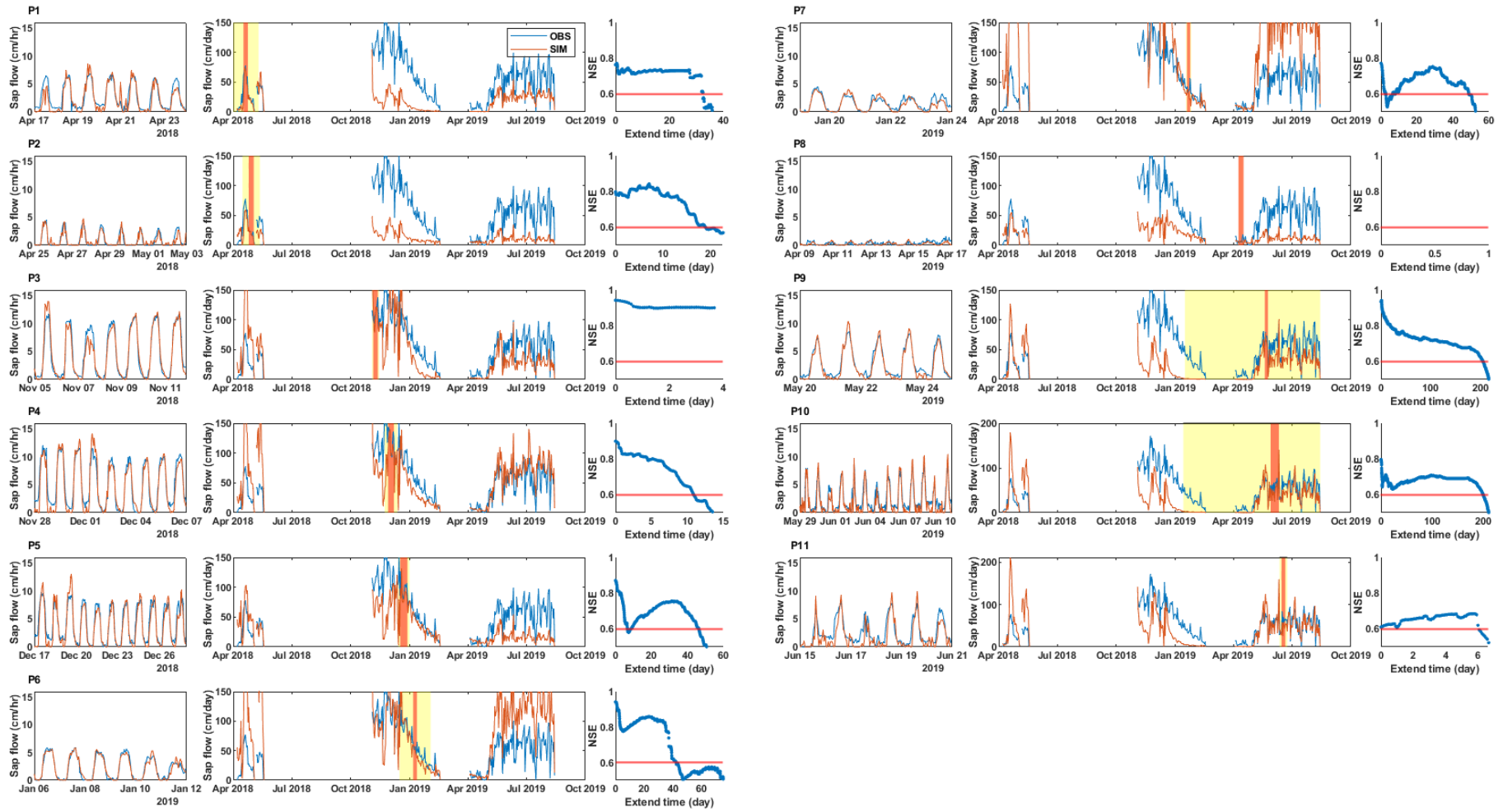


Figure S1. The calibration and validation results on Tree 3.

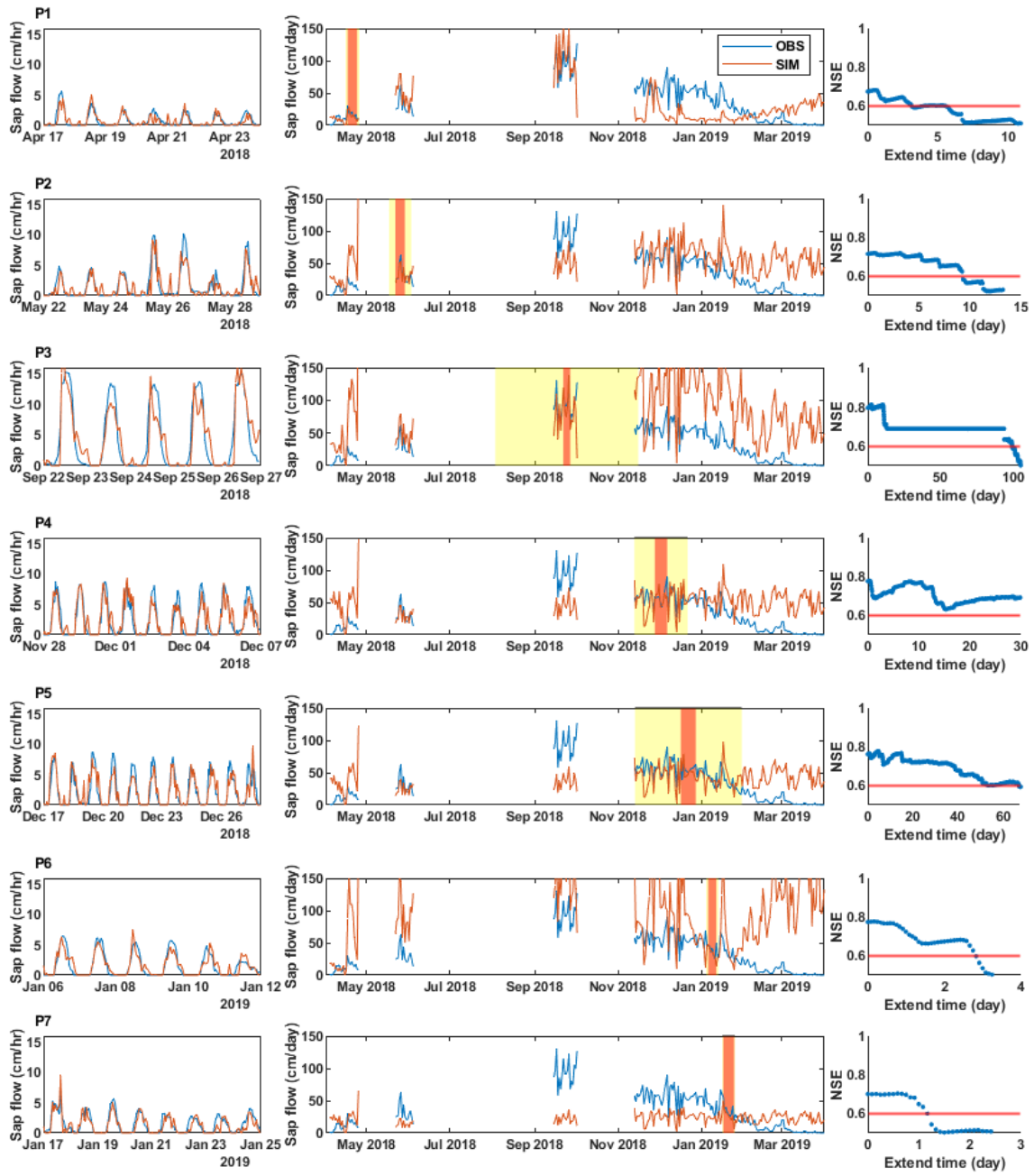


Figure S2. The calibration and validation results on Tree 4.

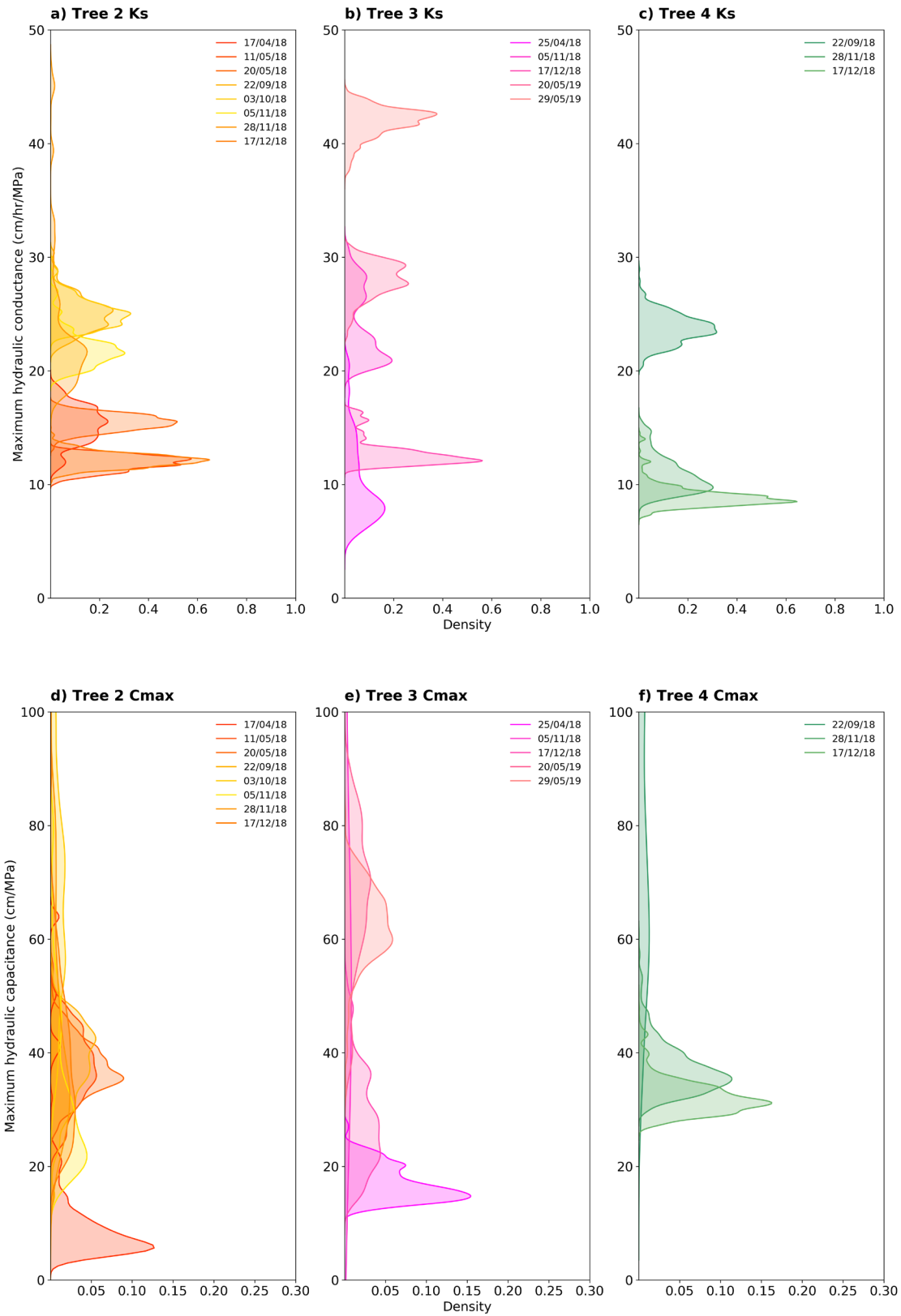


Figure. S3 Posterior distributions of the derived maximum hydraulic conductance (k_s) and maximum hydraulic capacitance (C_{max}) for Tree 2 are shown respectively in (a, d), for Tree 3 in (b, e), and for Tree 4 in (c, f).

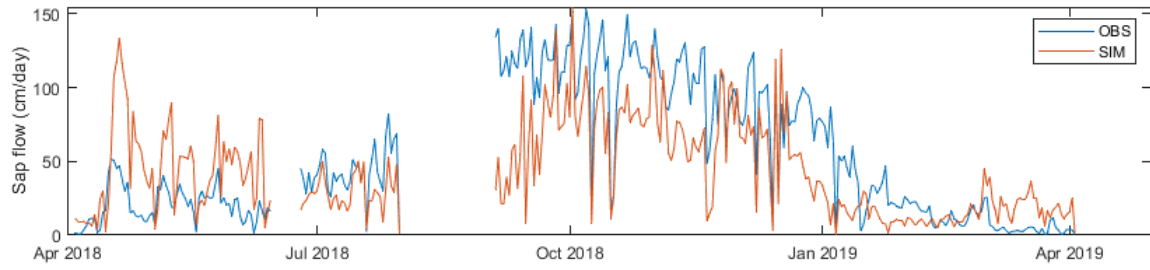


Figure S4. Simulated sap flow from the whole data period compared with observed sap flow (NSE = 0.54).

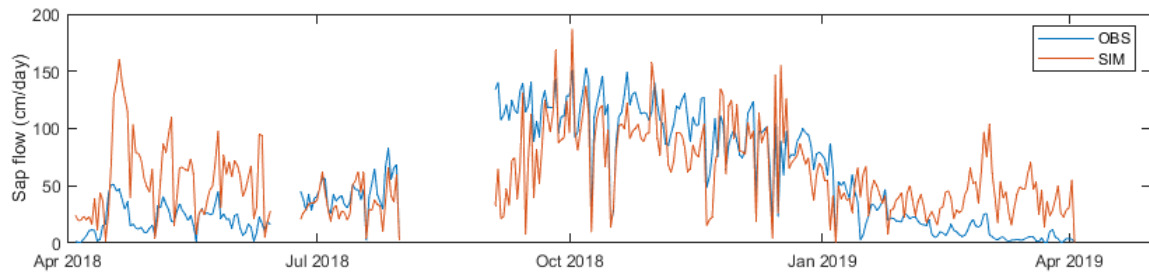


Figure S5. Simulated sap flow from the whole data period compared with observed sap flow (Calibrated NSE = 0.65; validated NSE = 0.37).

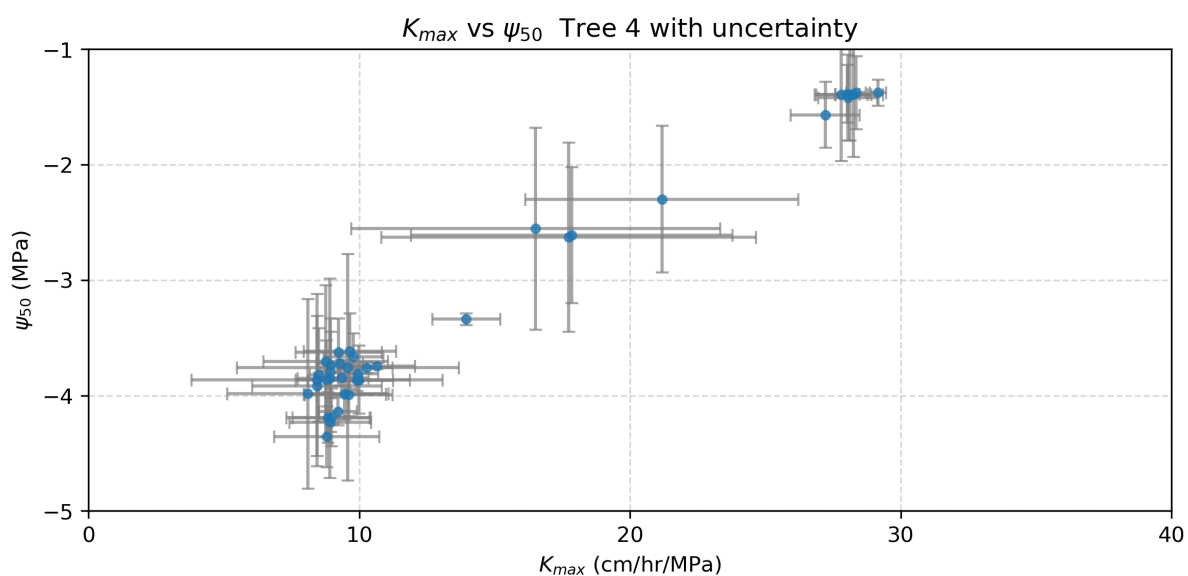
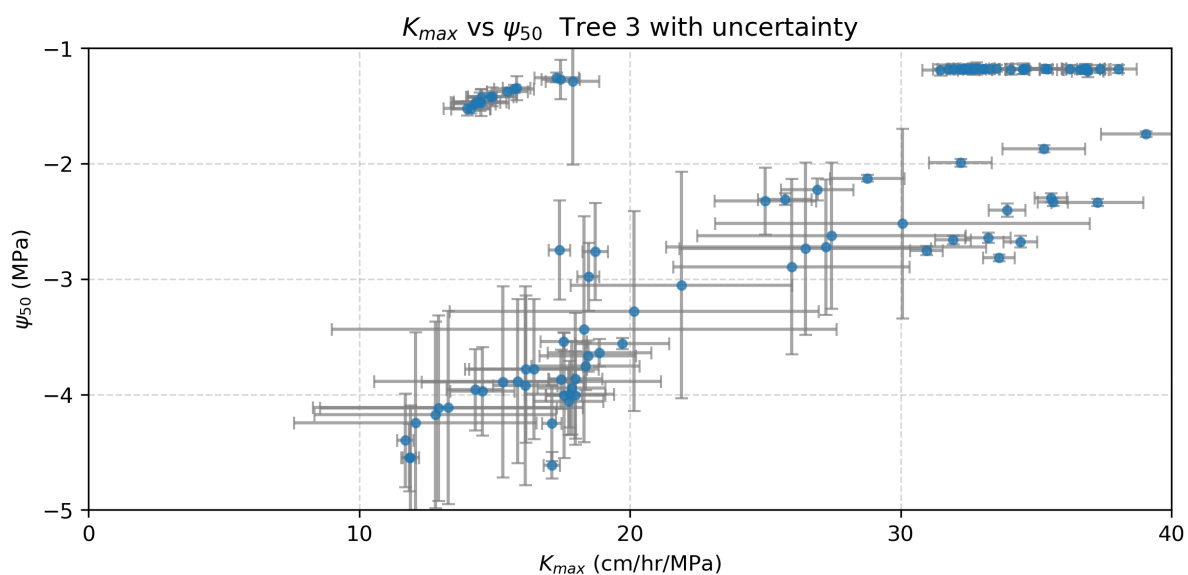
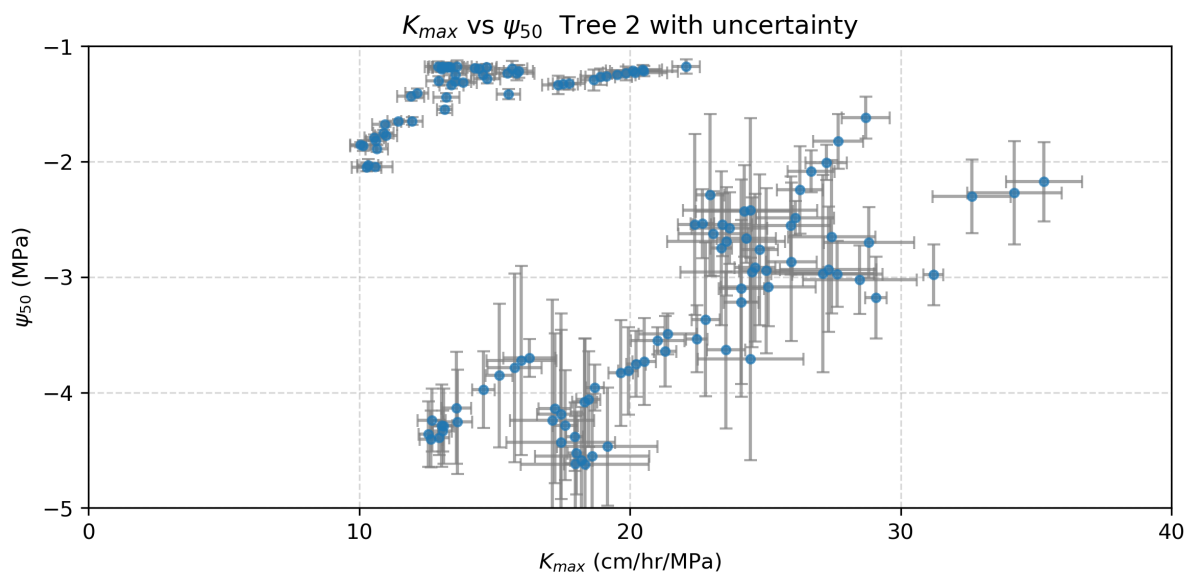


Figure S6. Relationship between Ψ_{50} and $k_{\{max,25\}}$ for individual trees with standard deviation of posterior samples (last 10% samples).