



Supplement of

A decomposition approach to evaluating the local performance of global streamflow reanalysis

Tongtiegang Zhao et al.

Correspondence to: Zexin Chen (chenzx33@mail2.sysu.edu.cn)

The copyright of individual parts of the supplement might differ from the article licence.

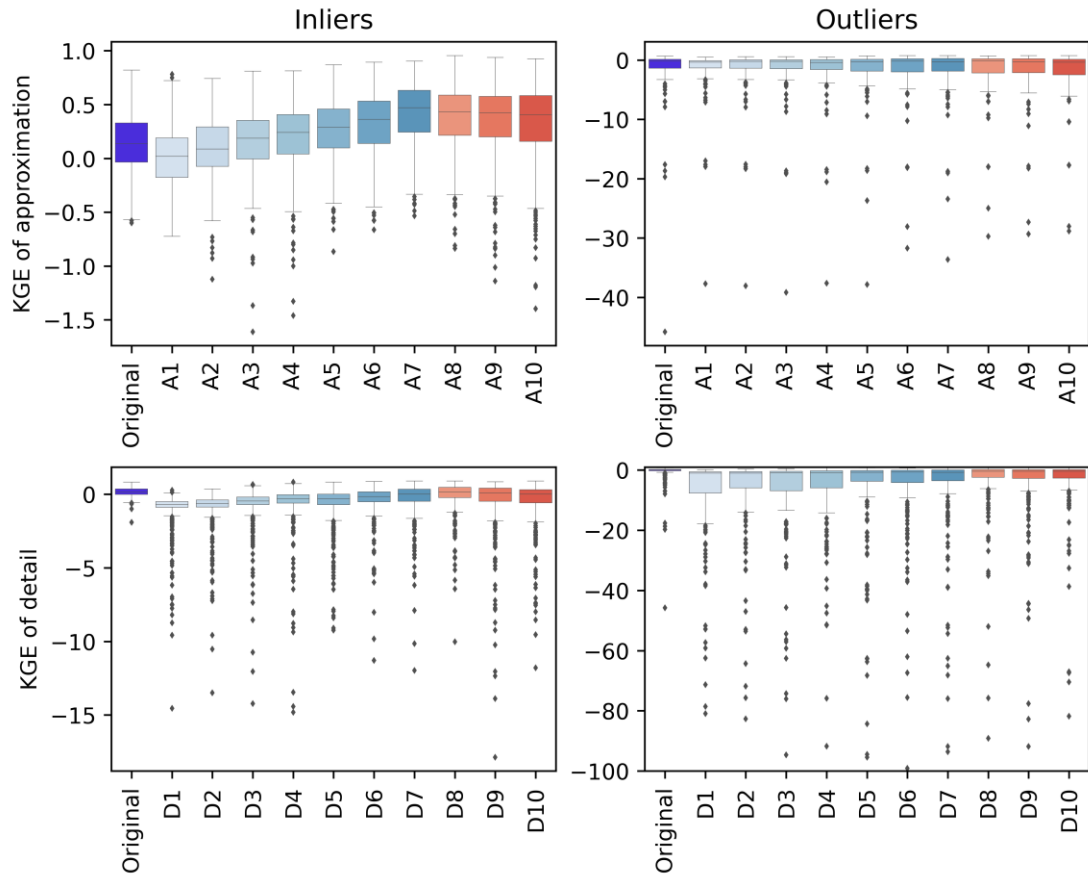


Figure S1. The KGEs of inliers and outliers for approximation and detail components using the Density-Based Spatial Clustering of Applications with Noise (DBSCAN).

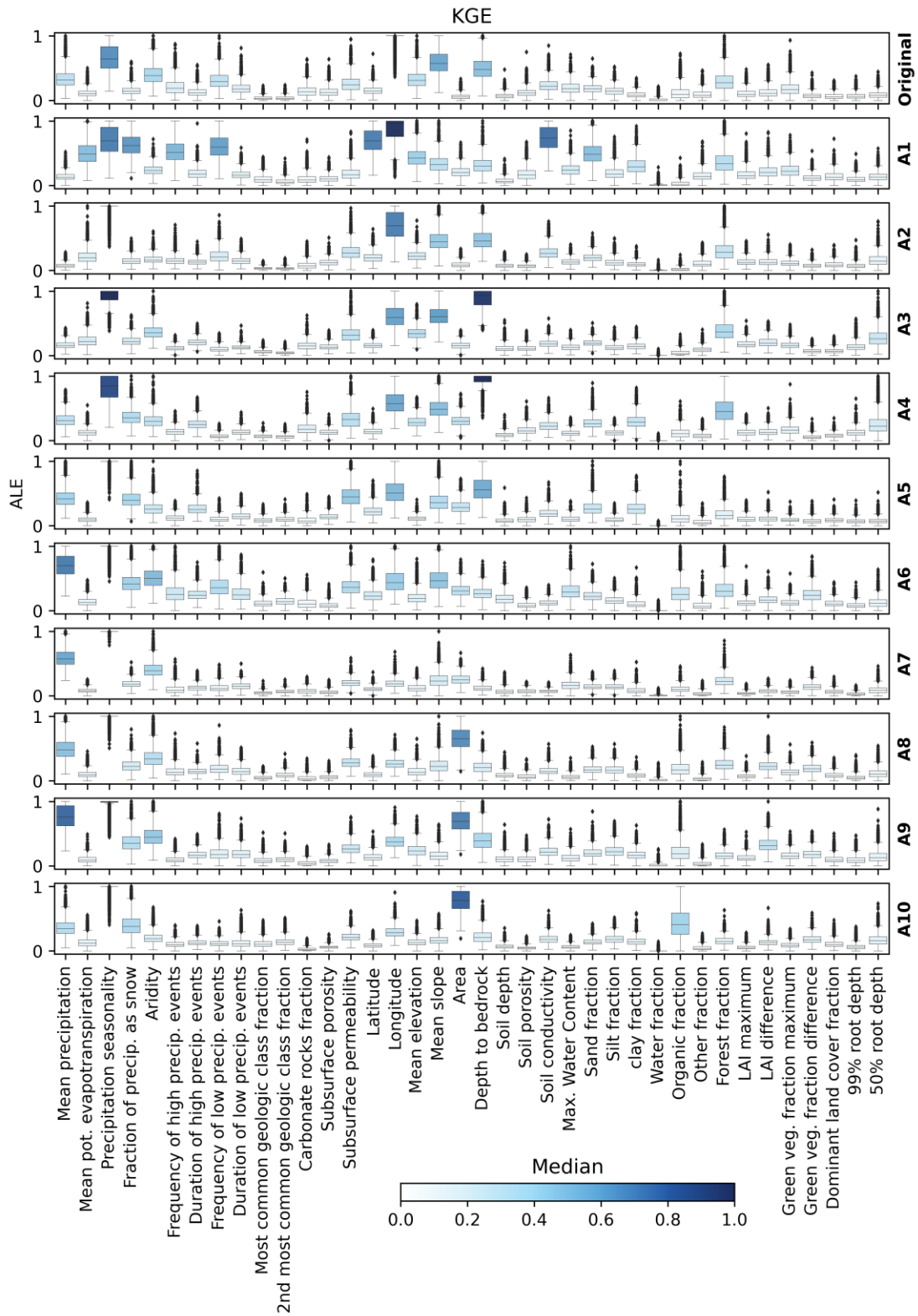


Figure S2. The ALEs of the catchment attributes on the KGE for the original time series and approximation components derived from 5000 selections of catchments for training and testing. The ALE represents the mean absolute values for each ALE curve,

normalized for each original time series (or approximation component). The color of the box indicates its median value.

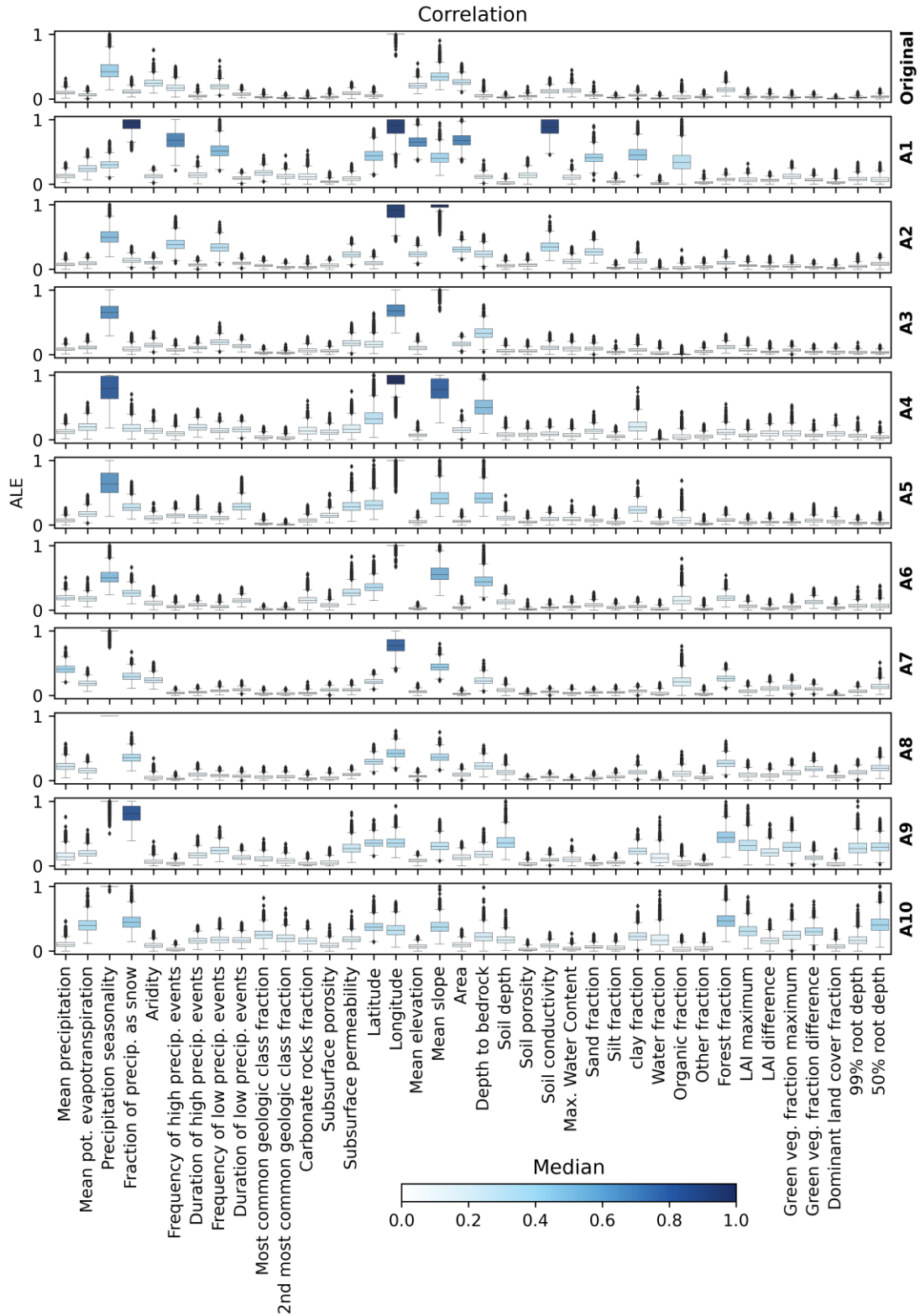


Figure S3. As for Figure S2 but for correlation.

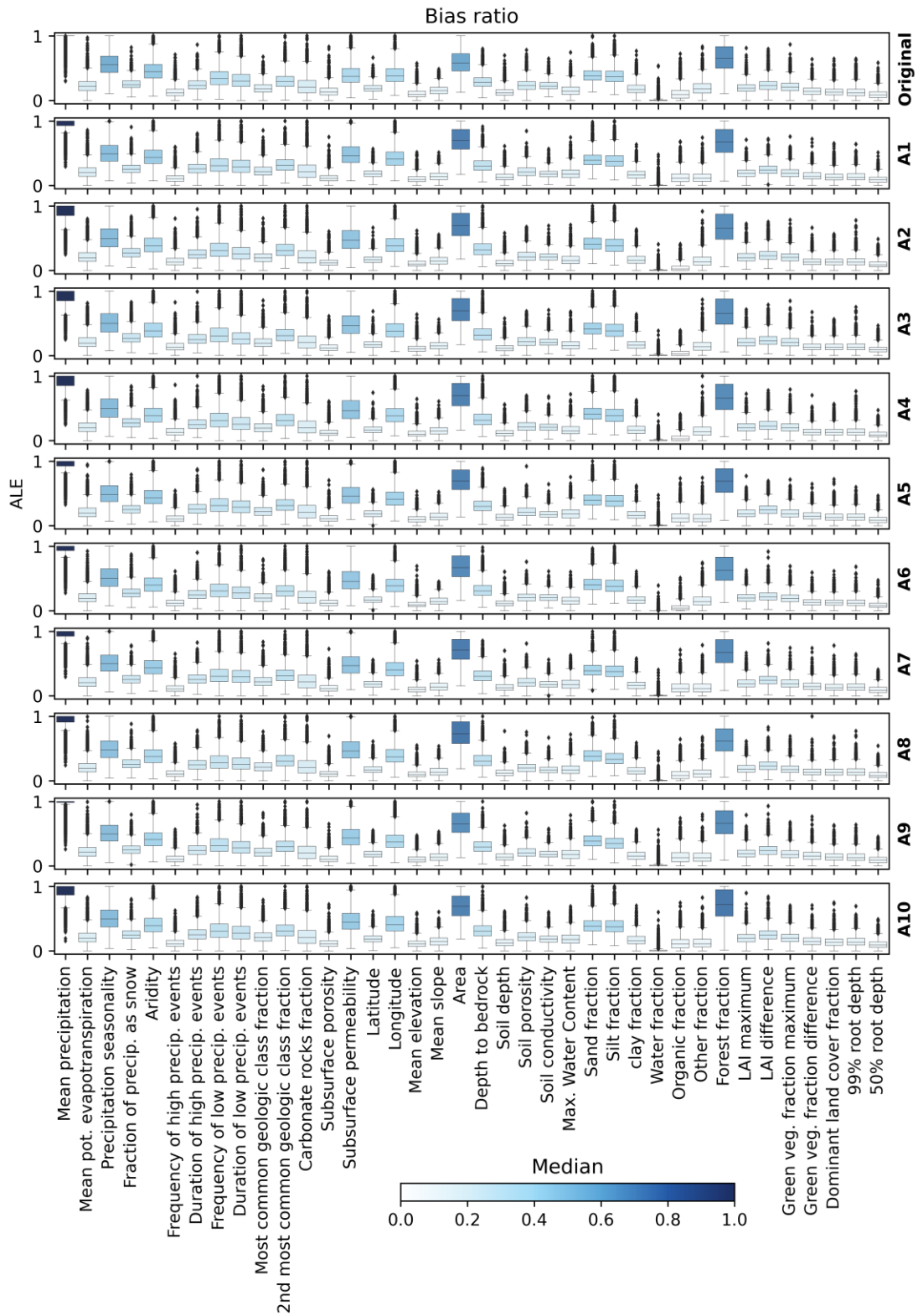


Figure S4. As for Figure S2 but for bias ratio.

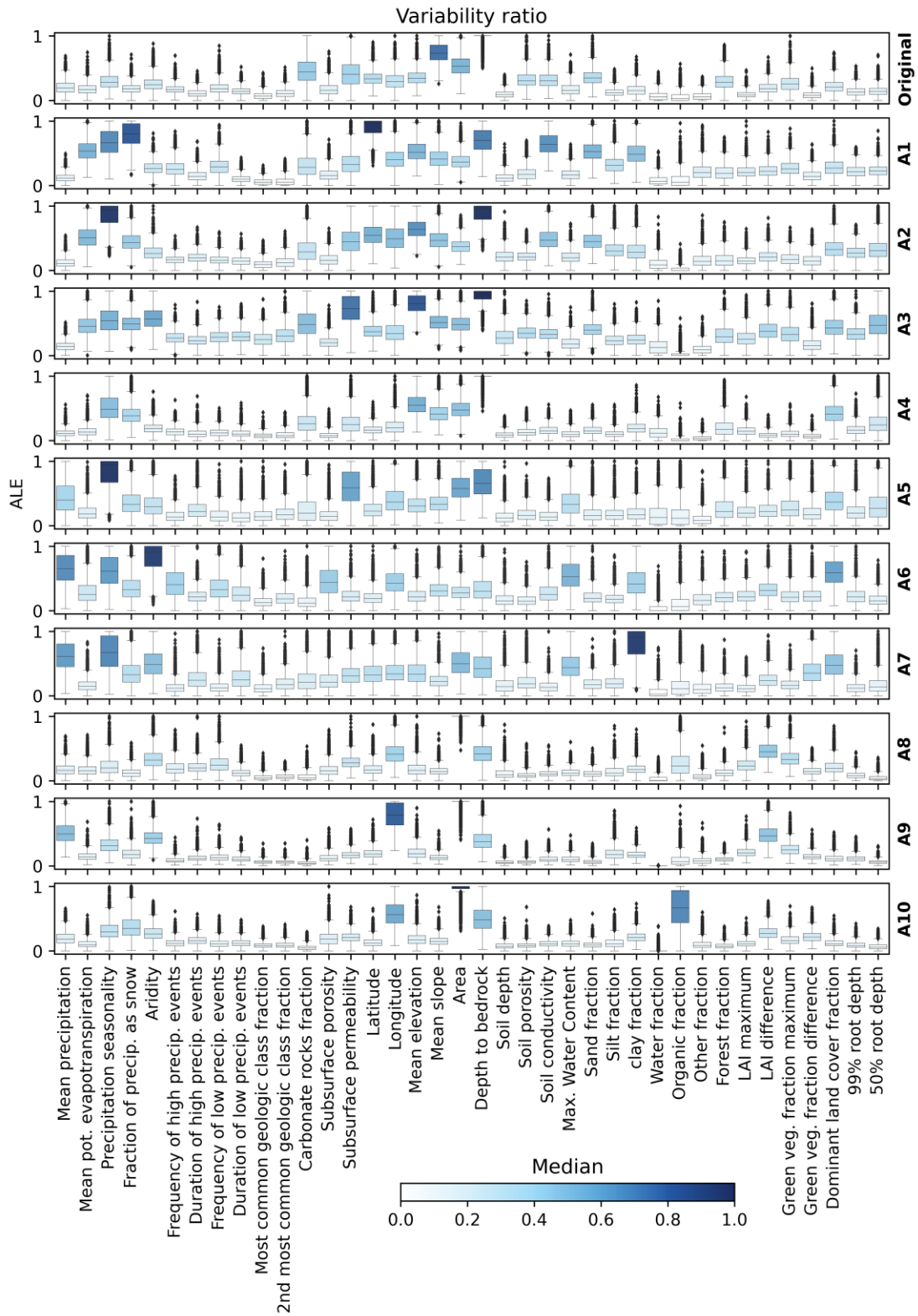


Figure S5. As for Figure S2 but for variability ratio.