



Supplement of

A comprehensive framework for stochastic calibration and sensitivity analysis of large-scale groundwater models

Andrea Manzoni et al.

Correspondence to: Monica Riva (monica.riva@polimi.it)

The copyright of individual parts of the supplement might differ from the article licence.

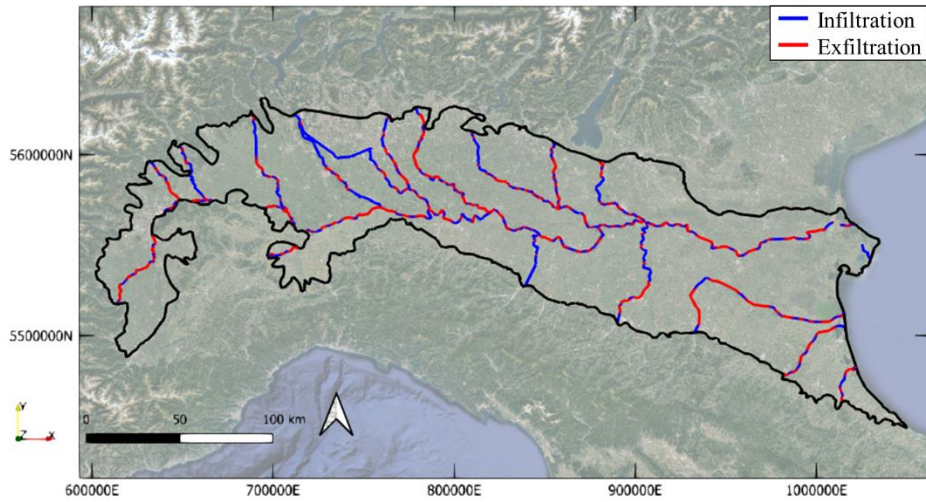


Figure S1: Analysis of interactions between rivers and groundwater. Blue and red colors correspond to river segments that recharge and drain the aquifer, respectively. Background map: © Google Maps 2023.