



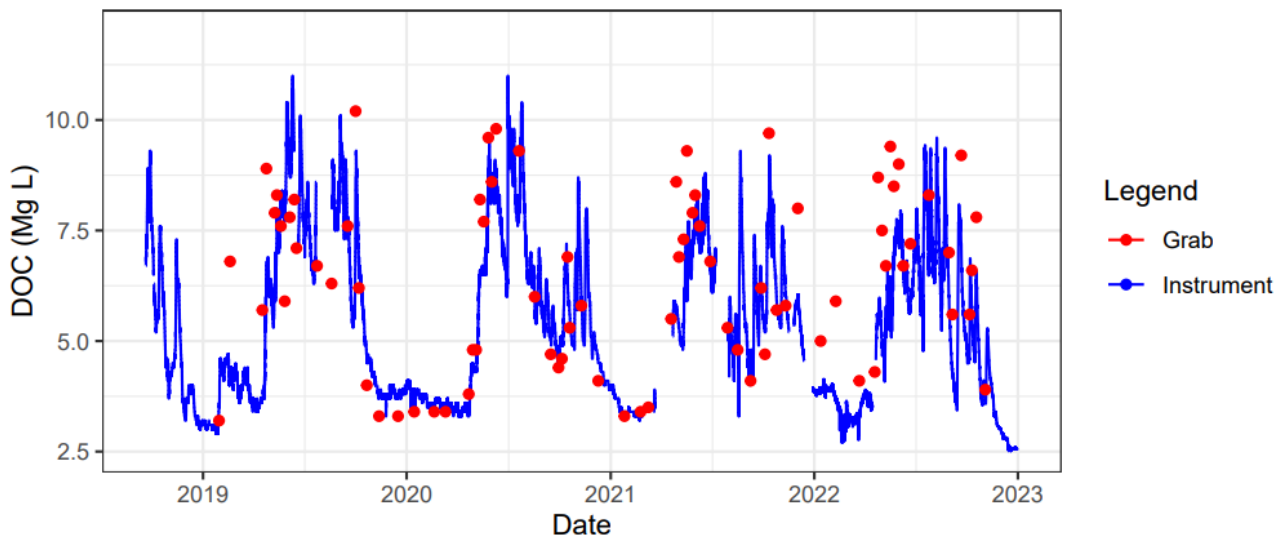
*Supplement of*

**Seasonal and interannual dissolved organic carbon transport process dynamics in a subarctic headwater catchment revealed by high-resolution measurements**

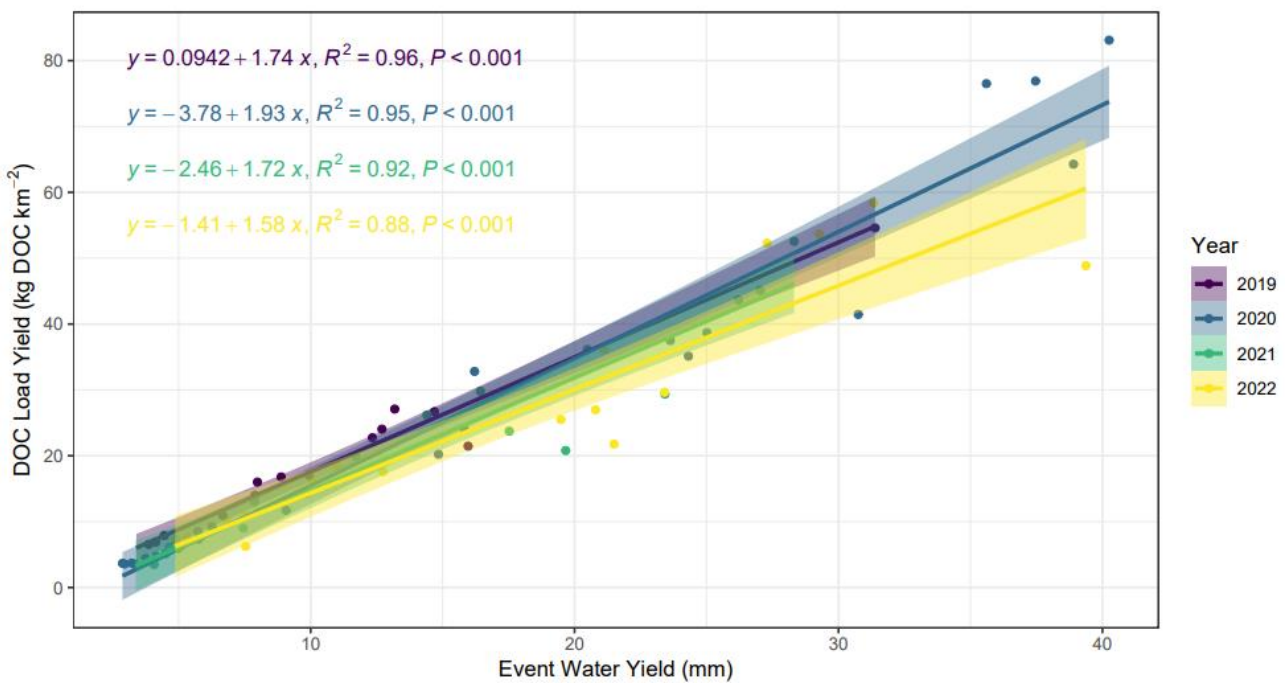
**Danny Croghan et al.**

*Correspondence to:* Danny Croghan ([danny.croghan@oulu.fi](mailto:danny.croghan@oulu.fi))

The copyright of individual parts of the supplement might differ from the article licence.



**Figure S1** – Grab samples for DOC vs Instrument measured samples throughout the study period.



**Figure S2** – DOC load yield vs Event water yield, with extreme events (events < 50mm) removed.