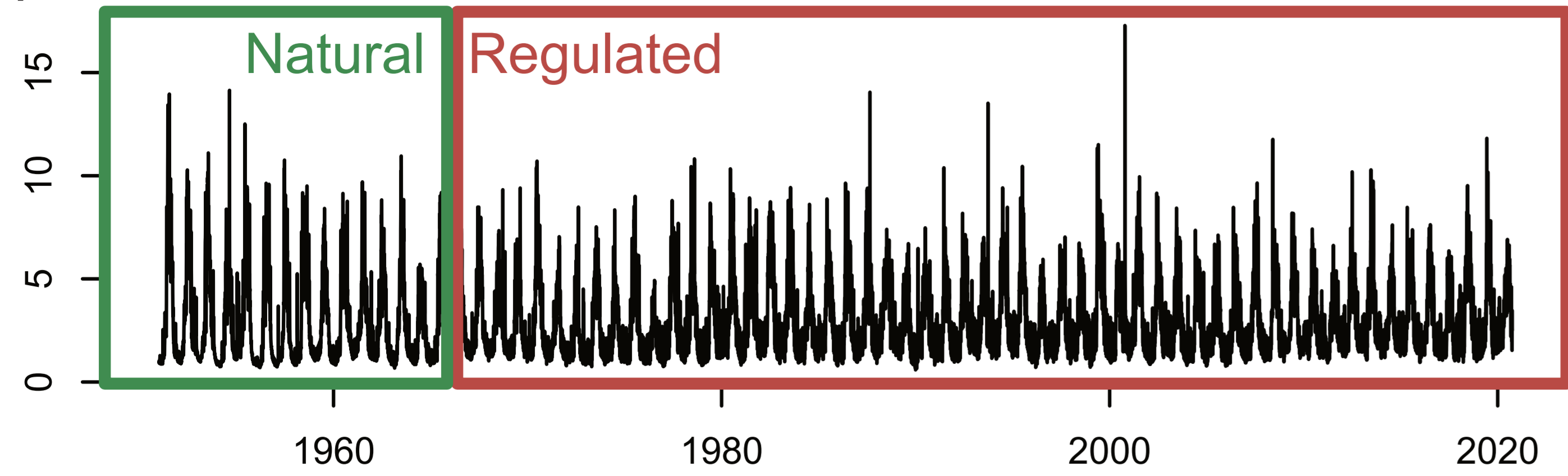
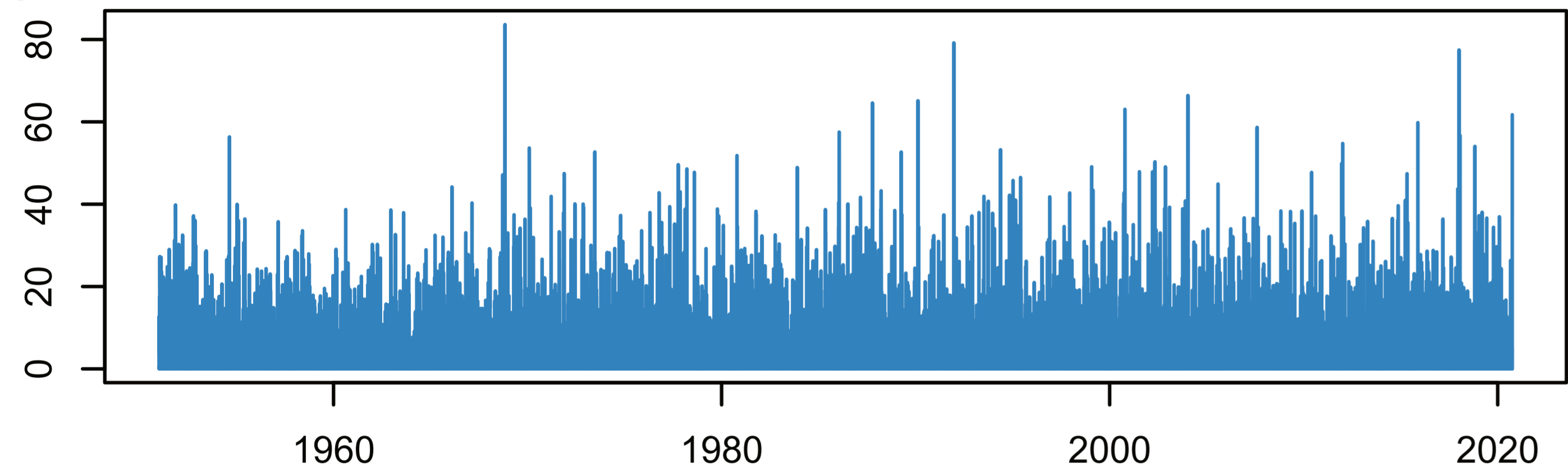


## (a) Input data

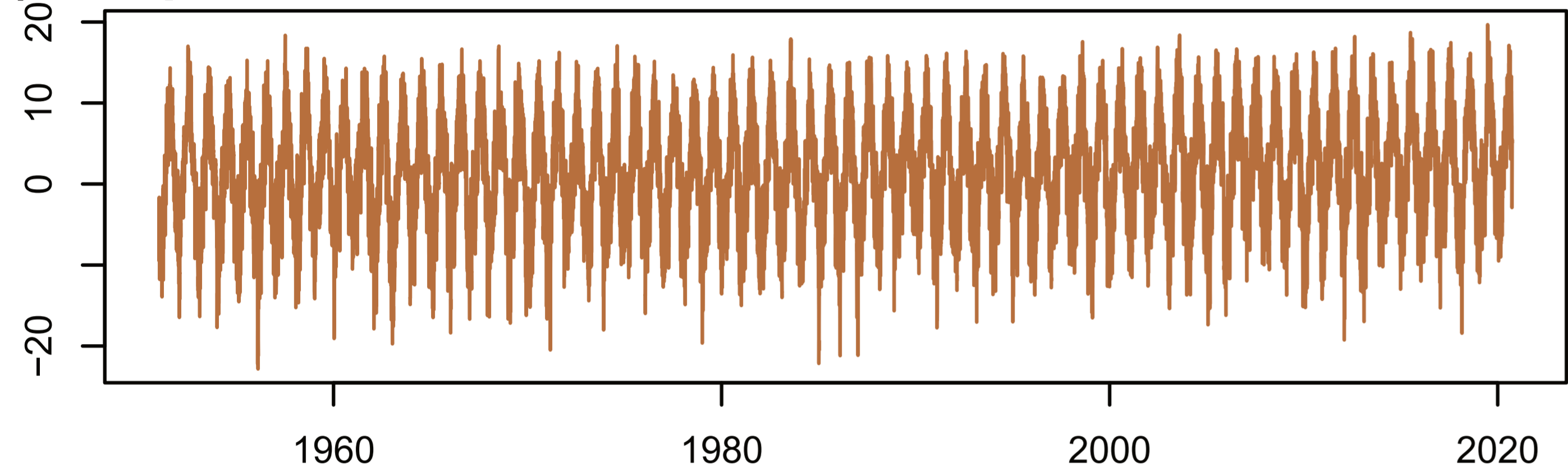
### (1) Streamflow



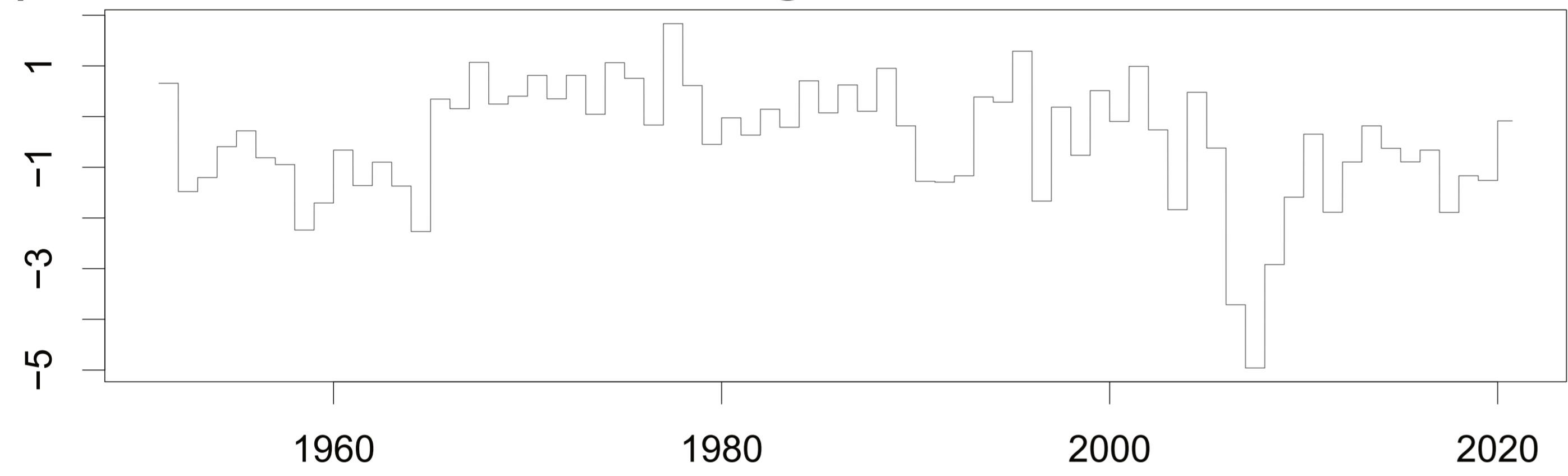
### (2) Precipitation



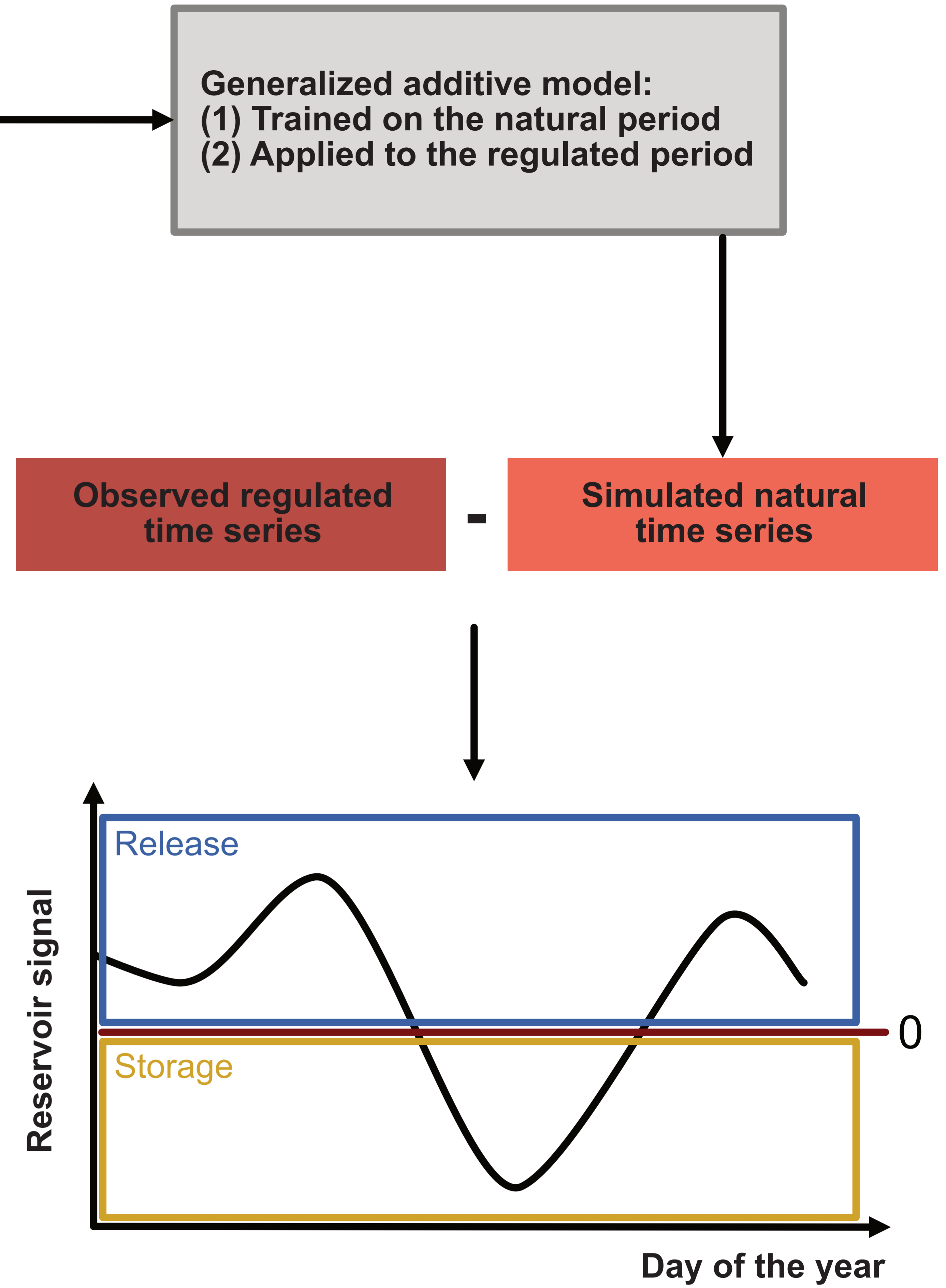
### (3) Temperature



### (4) Glacier mass balance change



## (b) Reservoir signal reconstruction



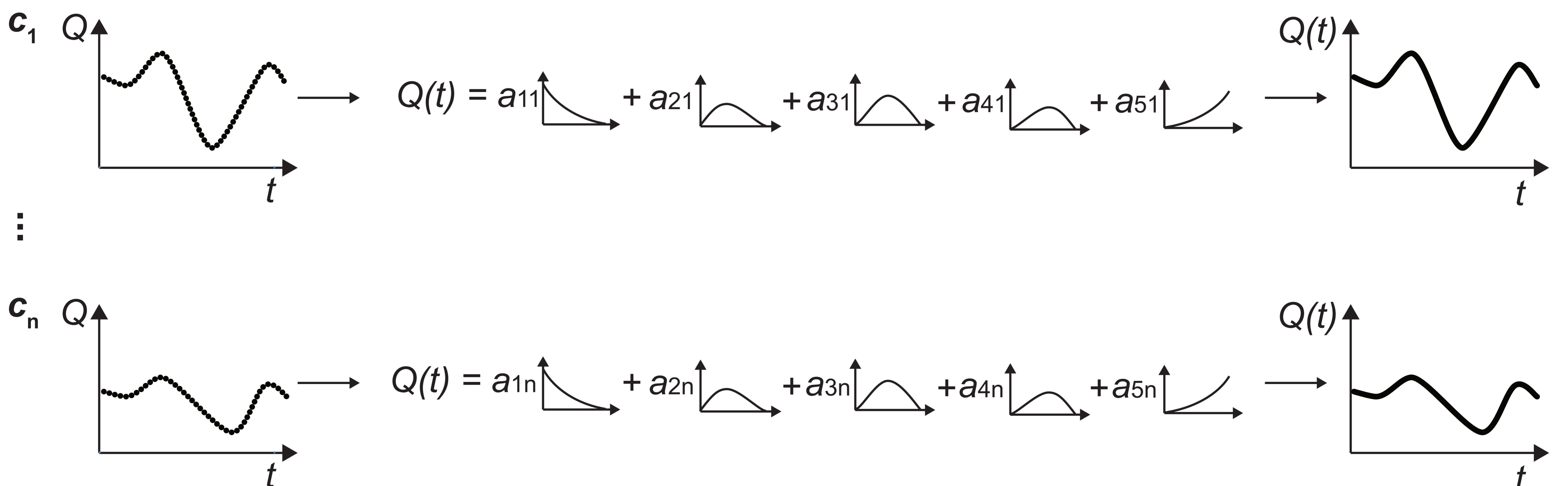
## (c) Signal clustering

### (1) FDA representation

Discrete observations

Representation by basis functions

Functional representation



### (2) FDA clustering

Distance computation spline coefficients

Hierarchical clustering

