



Supplement of

Controls on leaf water hydrogen and oxygen isotopes: a local investigation across seasons and altitude

Jinzhao Liu et al.

Correspondence to: Jinzhao Liu (liujinzhao@ieecas.cn)

The copyright of individual parts of the supplement might differ from the article licence.

Supplementary Figures

Figure S1: Boxplots of precipitation, soil water, stem water, and leaf water for $\delta^{18}\text{O}$ values (a-d) and $\delta^2\text{H}$ values (e-h). Box plots show the median (red line), interquartile range (IQR) with the upper (75%) and lower (25%) quartiles, lowest whisker still within 1.5 IQR of the lower quartile, and highest whisker still within 1.5 IQR of the upper quartile; dots mark outliers.

Figure S2: Dual isotope plots of precipitation, soil water, twig water, and leaf water in May (a), July (b), and September (c).

Figure S3: Relationships between altitude and $\delta^{18}\text{O}$ (a-c) and $\delta^2\text{H}$ values (d-f) from different water types across months.

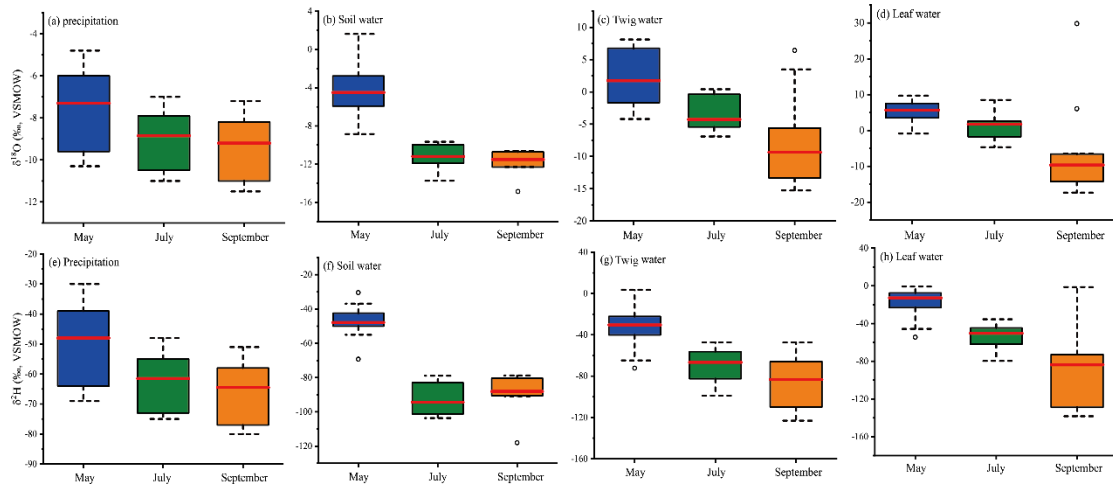


Figure S1

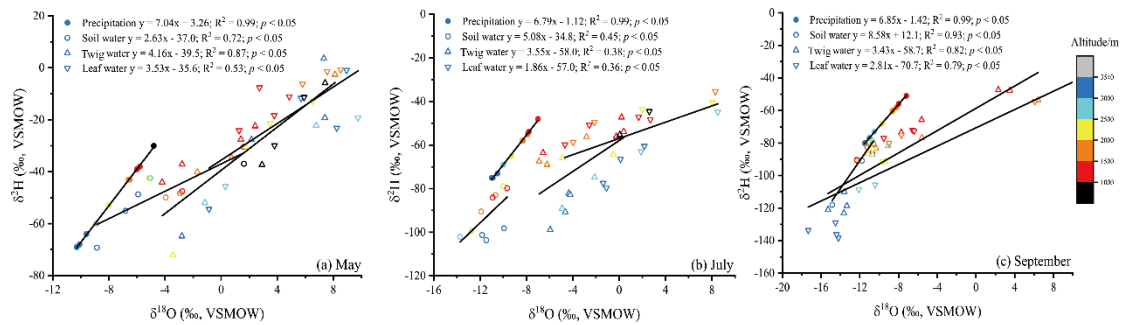


Figure S2

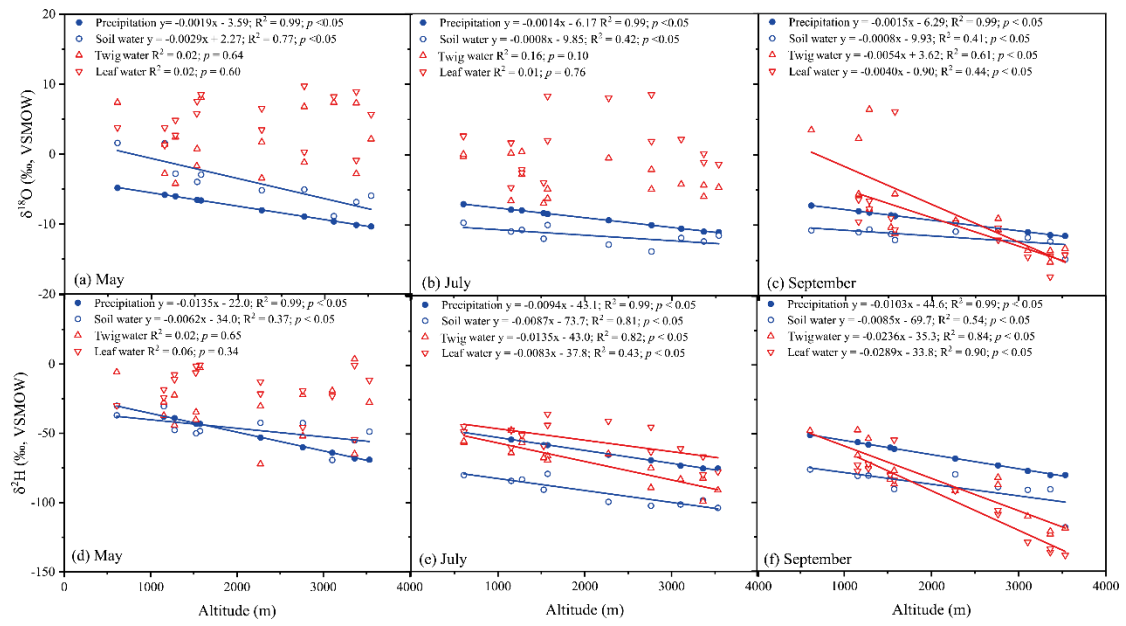


Figure S3