



Supplement of

Does non-stationarity induced by multiyear drought invalidate the paired-catchment method?

Yunfan Zhang et al.

Correspondence to: Lei Cheng (lei.cheng@whu.edu.cn)

The copyright of individual parts of the supplement might differ from the article licence.

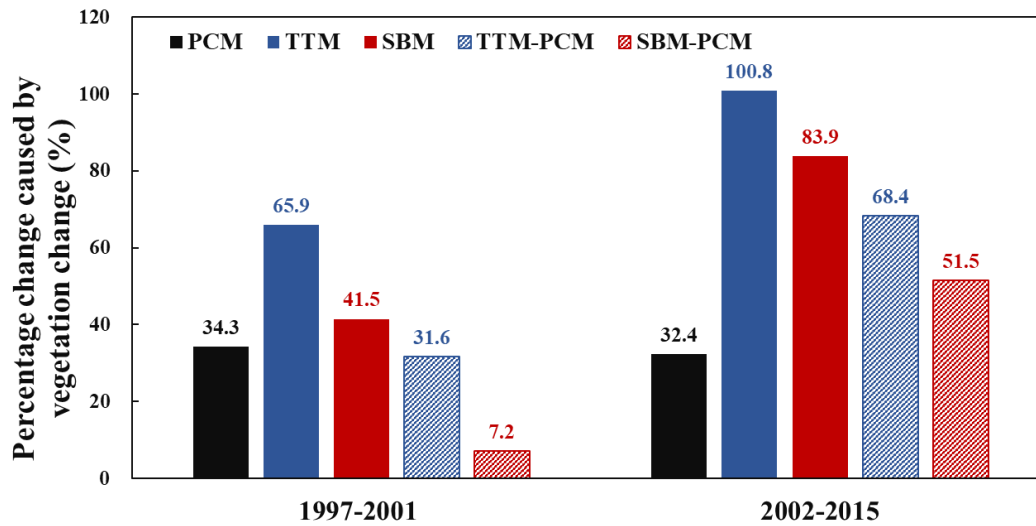


Figure S1: The contribution of vegetation changes to the total runoff changes of the Red Hill catchment estimated traditionally using all three methods during the periods of 1997–2001 and 2002–2015.