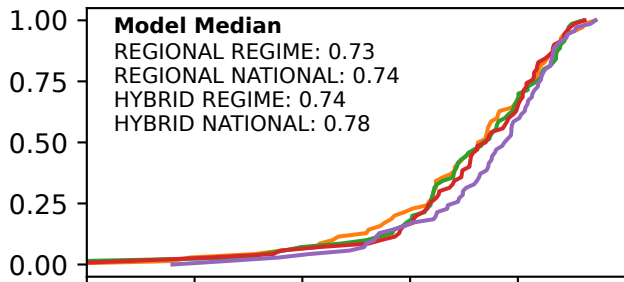
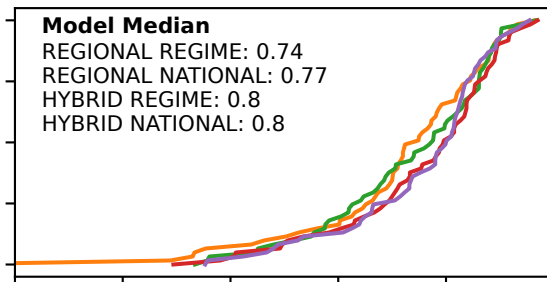


— REGIONAL REGIME — HYBRID REGIME
— REGIONAL NATIONAL — HYBRID NATIONAL

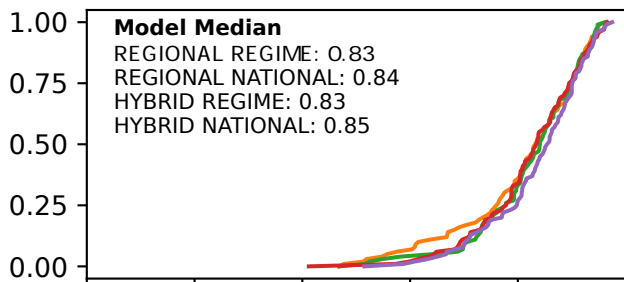
Uniform [n=71]



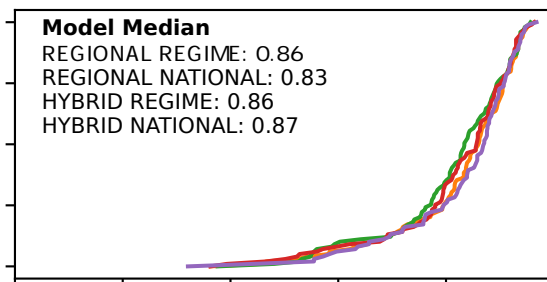
Mediterranean [n=62]



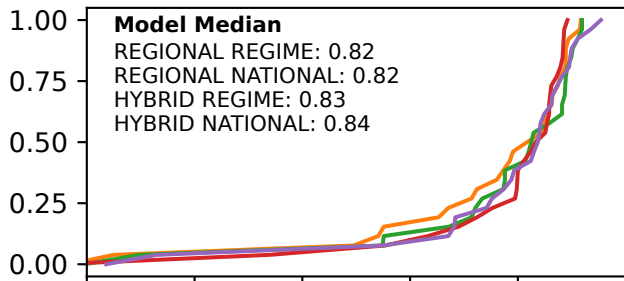
Oceanic [n=101]



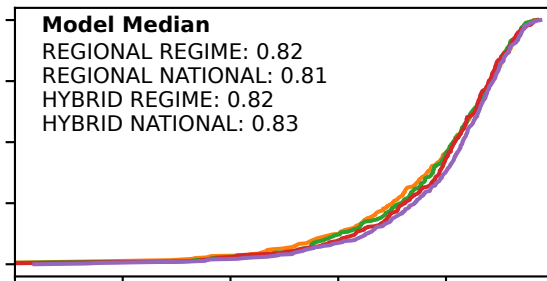
Nivo-Pluvial [n=100]



Nival [n=27]



All regimes [n=361]



Cumulative Density

0.0 0.2 0.4 0.6 0.8 1.0 0.0 0.2 0.4 0.6 0.8 1.0

KGE(Q)