



Corrigendum to

“Attributing trend in naturalized streamflow to temporally explicit vegetation change and climate variation in the Yellow River basin of China” published in Hydrol. Earth Syst. Sci., 26, 5291–5314, 2022

Zhihui Wang^{1,3}, Qiuhong Tang², Daoxi Wang^{1,3}, Peiqing Xiao¹, Runliang Xia⁴, Pengcheng Sun¹, and Feng Feng⁵

¹Key Laboratory of Soil and Water Conservation on the Loess Plateau, Yellow River Institute of Hydraulic Research, Yellow River Conservancy Commission, Zhengzhou, 450003, China

²Key Laboratory of Water Cycle and Related Land Surface Processes, Institute of Geographic Sciences and Natural Resources Research, Chinese Academy of Sciences, Beijing, 100101, China

³Henan Key Laboratory of Ecological Environment Protection and Restoration of the Yellow River Basin, Yellow River Institute of Hydraulic Research, Zhengzhou, 45003, China

⁴Henan Engineering Research Center of Smart Water Conservancy, Yellow River Institute of Hydraulic Research, Zhengzhou, 45003, China

⁵Yellow River Conservancy Technical Institute, Kaifeng, 475004, China

Correspondence: Qiuhong Tang (tangqh@igsrr.ac.cn)

Published: 3 November 2022

During this paper’s image production process, some mistakes were inserted into Figs. 5, 6, and 12; therefore, the following corrections are shown to make the research results more clearly and easily understandable.

The corrected figures are shown below.

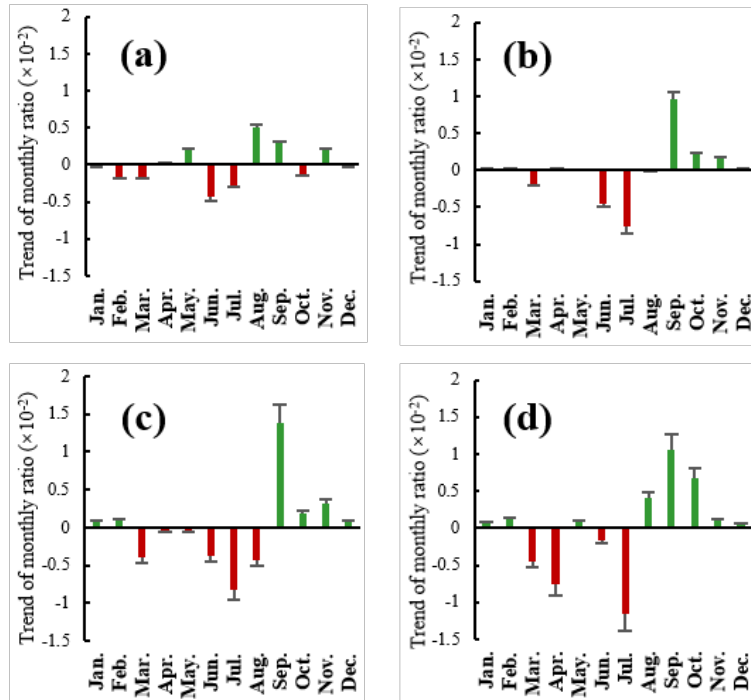


Figure 5. Trends in the ratio of the observed monthly to annual precipitation of subregions in the (a) source region, (b) TNH–TDG, (c) TDG–LM, and (d) LM–HYK. The error bars represent 1 standard deviation (SD).

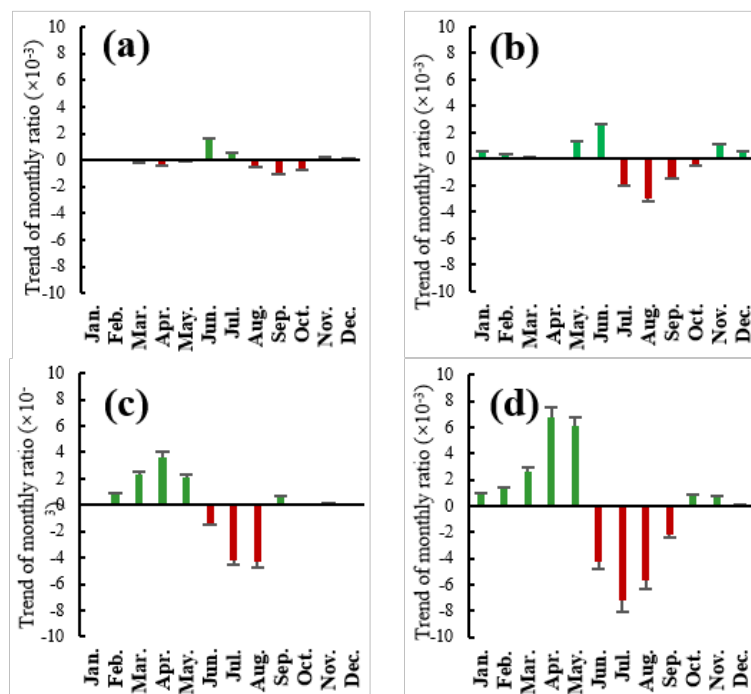


Figure 6. Trends in the ratio of the observed monthly to annual mean LAI of subregions in the (a) source region, (b) TNH–TDG, (c) TDG–LM, and (d) LM–HYK. The error bars represent 1 SD.

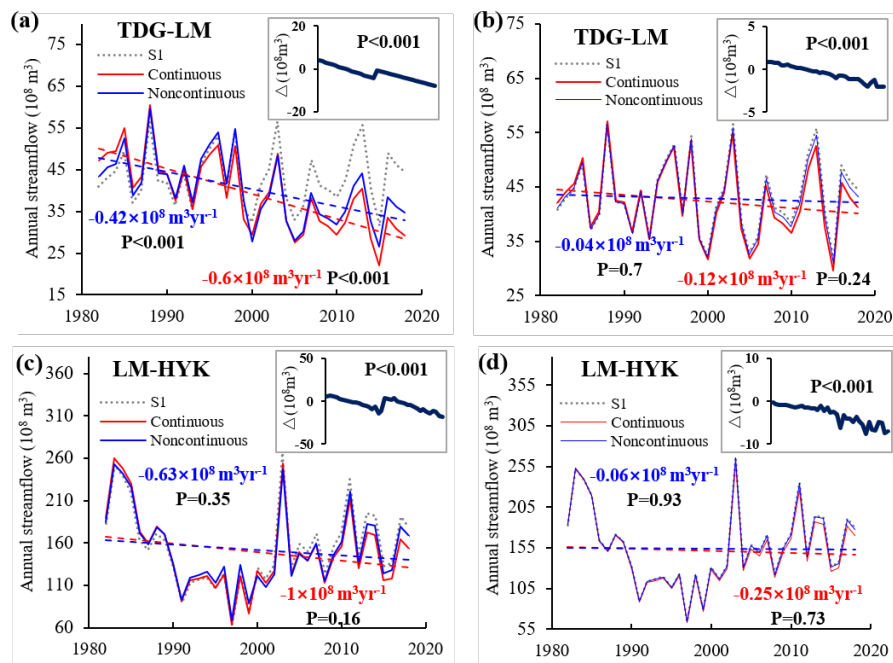


Figure 12. The comparison of the simulated annual streamflow trend using VIC considering and without considering continuous dynamics of interannual LAI (a, c) and intra-annual temporal pattern of LAI (b, d) in the TDG-LM and LM-HYK subregions. The insets show the time series of the difference between simulated annual streamflow with VIC considering and without considering continuous LAI dynamics and its significance level of change trend.