



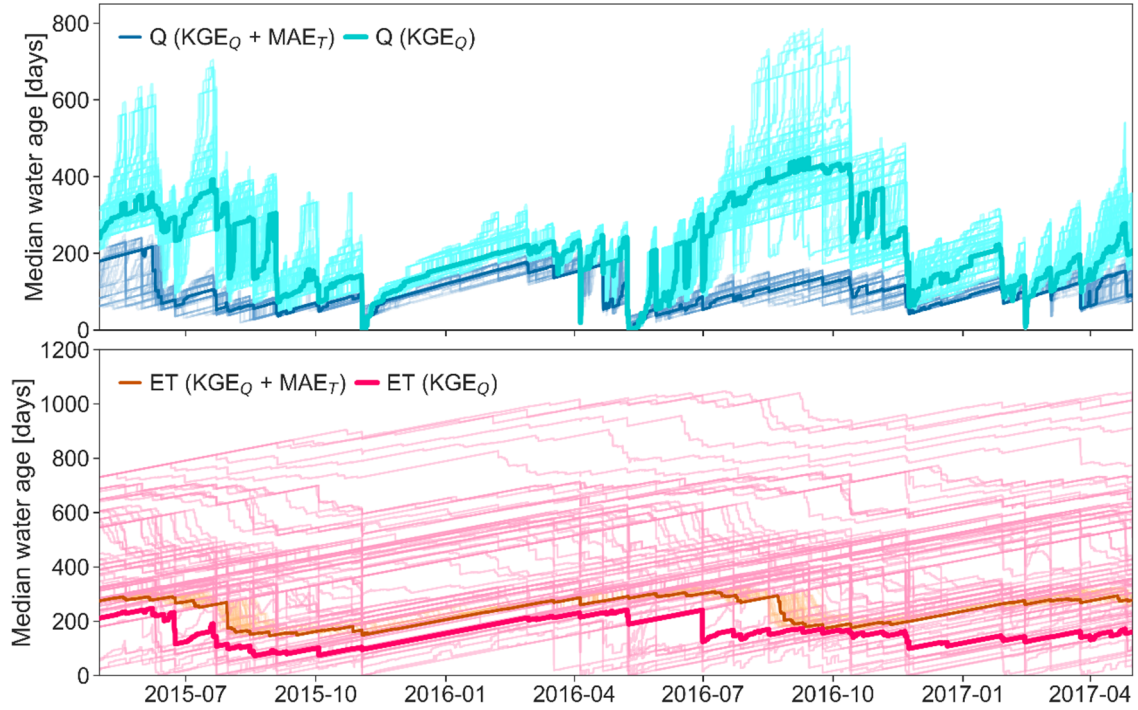
*Supplement of*

## **Precipitation fate and transport in a Mediterranean catchment through models calibrated on plant and stream water isotope data**

**Matthias Sprenger et al.**

*Correspondence to:* Pilar Llorens ([pilar.llorens@idaea.csic.es](mailto:pilar.llorens@idaea.csic.es))

The copyright of individual parts of the supplement might differ from the article licence.



**Fig. S1 Median water age in stream runoff (Q, upper panel), and the evapotranspiration flux (ET, lower panel). Age estimates shown for the best simulation (dark colors) and the top 100 simulations (light colors) for the conventional calibration approach,  $KGE_Q$  (cyan and pink in upper and lower panel, respectively) and for the results of the multi-objective calibration (same as in Figure 6, blue and orange in upper and lower panel, respectively).**