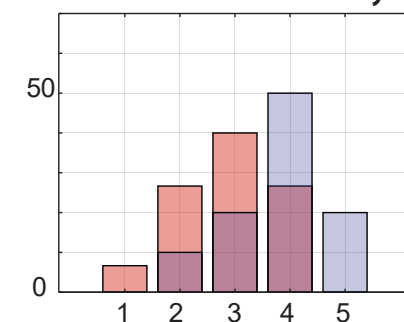
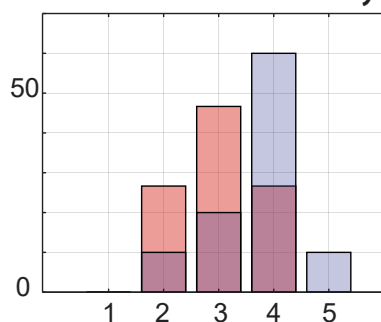
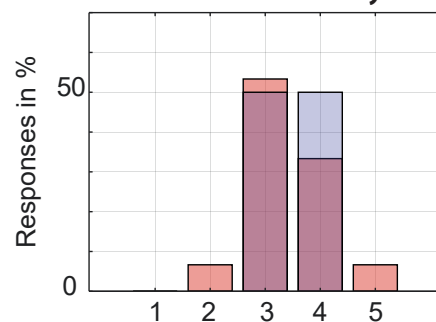


# How familiar are you with the following sources of uncertainty related to hydrological modelling? (theoretical knowledge about uncertainty)

## Data Uncertainty

## Parameter Uncertainty

## Structural Uncertainty



Numbers correspond to:

- 1 = I don't know what this is
- 2 = I know this exists but don't know details
- 3 = I have some theoretical knowledge
- 4 = I know a method to address this
- 5 = I can confidently handle this aspect

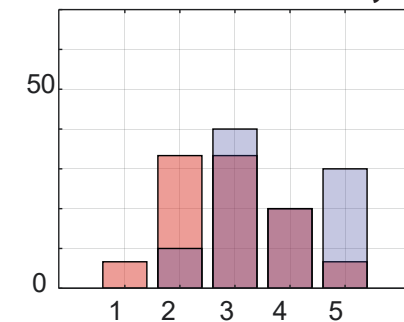
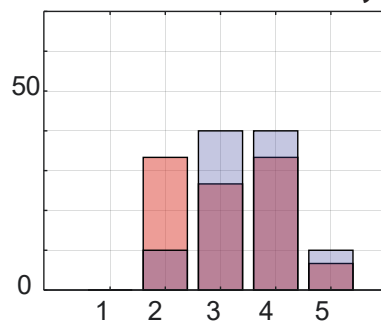
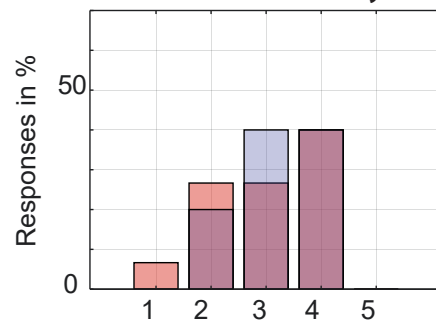
■ n = 15 Before  
■ n = 10 After

# How likely is it that you consider the following sources of uncertainty in your modelling? (practical knowledge about uncertainty)

## Data Uncertainty

## Parameter Uncertainty

## Structural Uncertainty



Numbers correspond to:

- 1 = Not likely at all
- 2 = Unlikely to quantify but I might mention it
- 3 = I'd address this qualitatively
- 4 = I'd address this in a basic quantitative way
- 5 = I'd address this in a thorough quantitative way

■ n = 15 Before  
■ n = 10 After