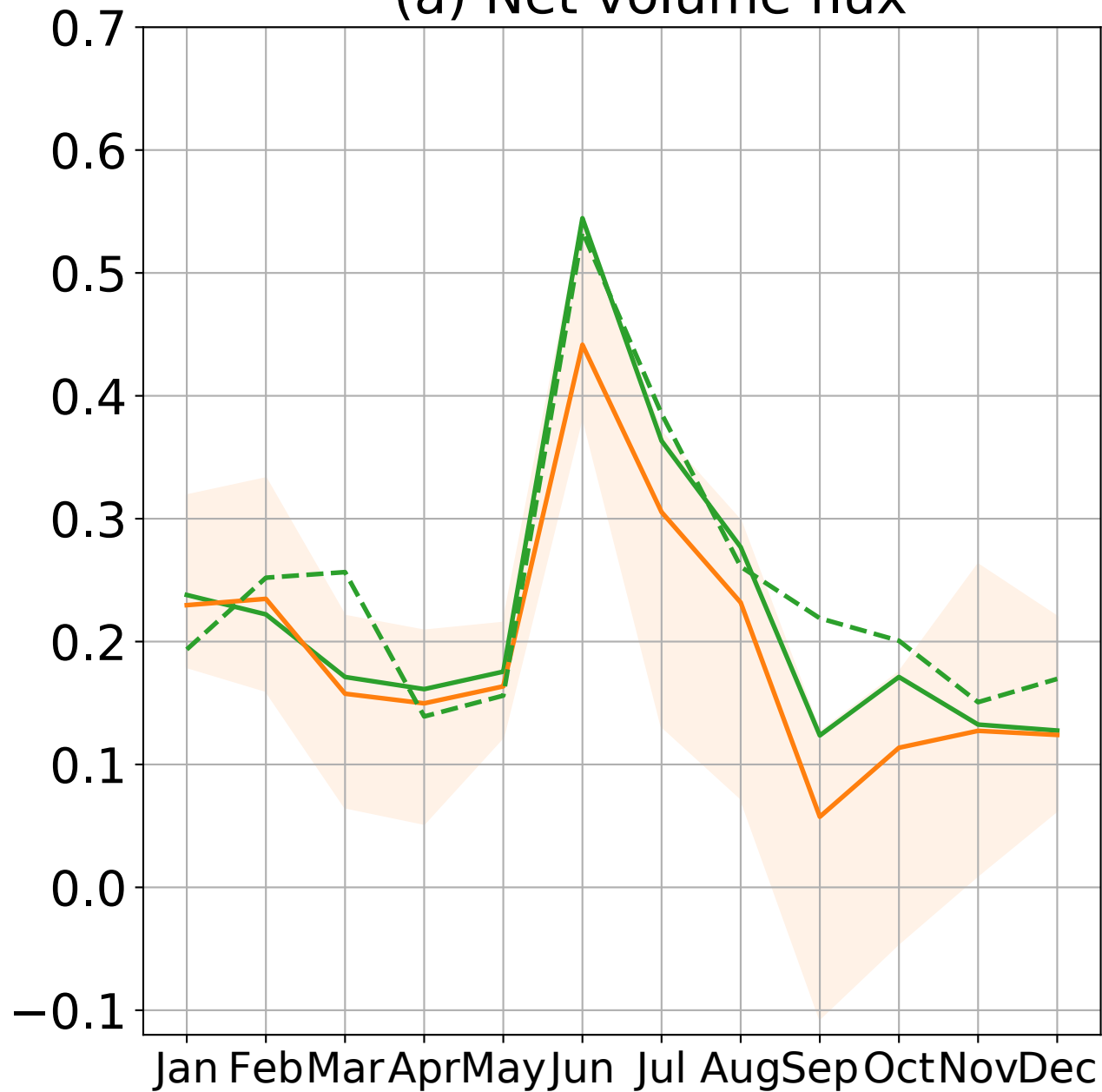
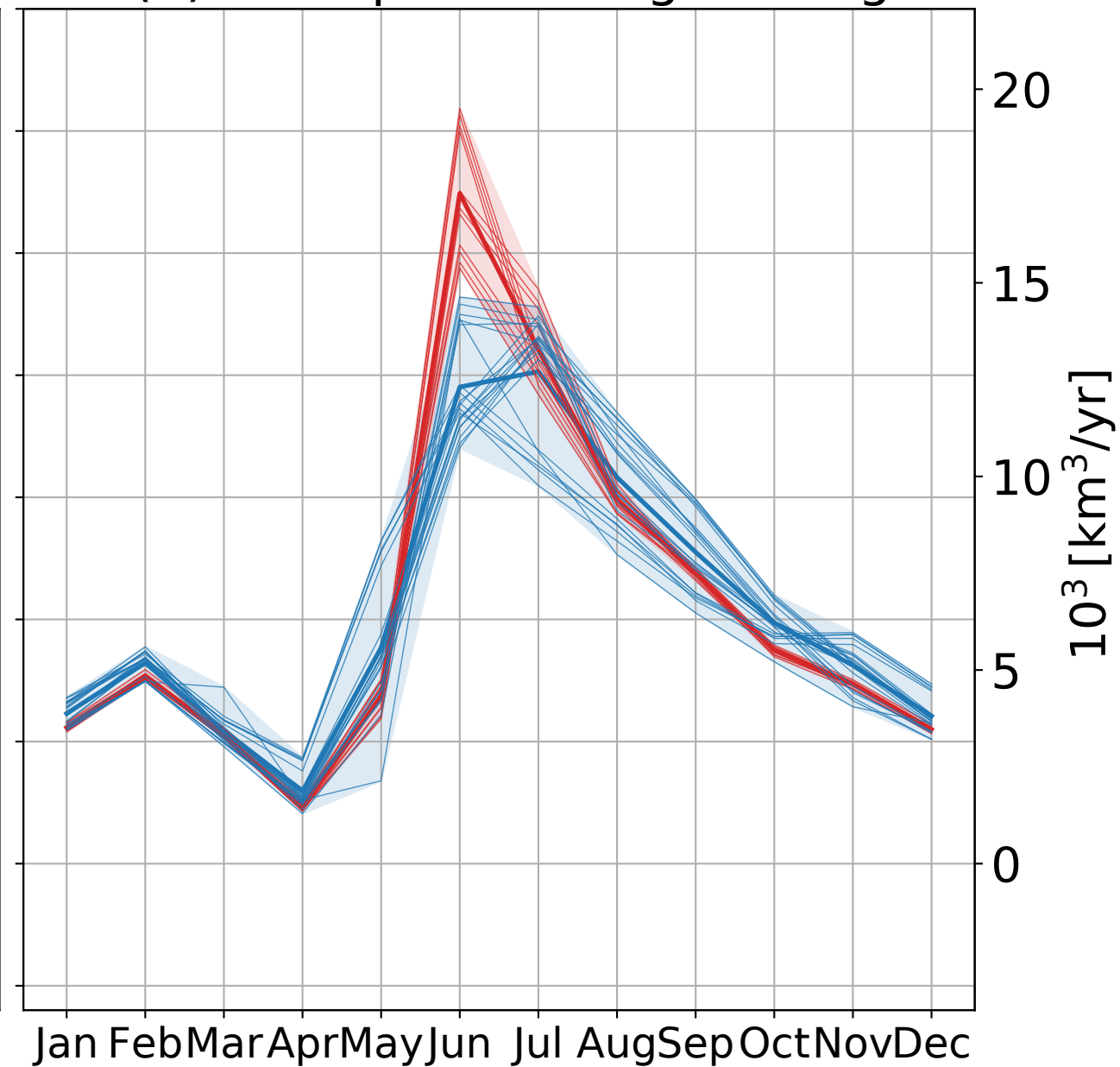


(a) Net volume flux



— ORAS5 93-18:  $F_{liquid}$ ,  $\mu = 7329$   
 — GREP 93-18:  $F_{liquid}$ ,  $\mu = 6386 \pm 1514$   
 - - - ORAS5 forcing,  $\mu = 7666$

(b) FW input - storage change



— reana. based esti.,  $\mu = 6511 \pm 139$   
 — obs. based esti.,  $\mu = 6545 \pm 99$