



Supplement of

Applying non-parametric Bayesian networks to estimate maximum daily river discharge: potential and challenges

Elisa Ragno et al.

Correspondence to: Elisa Ragno (e.ragno@tudelft.nl)

The copyright of individual parts of the supplement might differ from the article licence.

Table S1: USGS Stations investigated in this study

#	HUC	ID	Station Name	Lat	Long	Area km ²
1	18	11481200	LITTLE R NR TRINIDAD CA	41.01	-124.08	105.40
2	18	11476600	BULL C NR WEOTT CA	40.35	-124.00	71.85
3	17	12010000	NASELLE RIVER NEAR NASELLE, WA	46.37	-123.74	142.18
4	18	11475560	ELDER C NR BRANSCOMB CA	39.73	-123.64	16.79
5	17	14306340	EAST FORK LOBSTER CREEK NEAR ALSEA, OR.	44.25	-123.64	14.73
6	17	14303200	TUCCA CREEK NEAR BLAINE, OR.	45.32	-123.55	8.06
7	17	12056500	NF SKOKOMISH R BL STAIRCASE RPDS NR HOODSPORT, WA	47.51	-123.33	146.97
8	17	14308990	COW CREEK ABV GALESVILLE RES, NR AZALEA, OR.	42.82	-123.13	167.76
9	17	14362250	STAR GULCH NEAR RUCH, OR.	42.15	-123.08	41.42
10	17	12054000	DUCKABUSH RIVER NEAR BRINNON, WA	47.68	-123.01	171.68
11	17	12073500	HUGE CREEK NEAR WAUNA, WA	47.39	-122.70	15.67
12	17	14187000	WILEY CREEK NEAR FOSTER, OR	44.37	-122.62	134.75
13	18	11451100	NF CACHE C A HOUGH SPRING NR CLEARLAKE OAKS CA	39.17	-122.62	155.09
14	17	12025700	SKOOKUMCHUCK RIVER NEAR VAIL, WA	46.77	-122.59	103.30
15	18	11162500	PESCADERO C NR PESCADERO CA	37.26	-122.33	118.87
16	17	14141500	LITTLE SANDY RIVER NEAR BULL RUN, OREG.	45.42	-122.17	59.87
17	17	14139800	SOUTH FORK BULL RUN RIVER NEAR BULL RUN, OR	45.44	-122.11	40.70
18	18	11180960	CULL C AB CULL C RES NR CASTRO VALLEY CA	37.72	-122.05	15.06
19	17	14158790	SMITH R AB SMITH R RES NR BELKNAP SPRGS, OREG.	44.33	-122.05	40.57
20	17	14138900	NORTH FORK BULL RUN RIVER NEAR MULTNOMAH FALLS, OR	45.49	-122.04	21.68
21	17	14138870	FIR CREEK NEAR BRIGHTWOOD, OR	45.48	-122.03	14.02
22	18	11180500	DRY C A UNION CITY CA	37.61	-122.02	24.32
23	17	12145500	RAGING RIVER NEAR FALL CITY, WA	47.54	-121.91	78.98
24	17	14138800	BLAZED ALDER CREEK NEAR RHODODENDRON, OREG.	45.45	-121.89	21.29
25	17	12117000	TAYLOR CREEK NEAR SELLECK, WA	47.39	-121.85	44.85
26	17	12147500	NORTH FORK TOLT RIVER NEAR CARNATION, WA	47.71	-121.79	102.89
27	18	11143000	BIG SUR R NR BIG SUR CA	36.25	-121.77	120.61
28	17	12143600	SF SNOQUALMIE RIVER AT EDGEWICK, WA	47.45	-121.72	165.01
29	17	12115500	REX RIVER NEAR CEDAR FALLS, WA	47.35	-121.66	34.72
30	17	14092750	SHITIKE CR, AT PETERS PASTURE, NR WARM SPRINGS, OR	44.75	-121.63	57.48

31	17	12115000	CEDAR RIVER NEAR CEDAR FALLS, WA	47.37	-121.63	102.80
32	17	12147600	SOUTH FORK TOLT RIVER NEAR INDEX, WA	47.71	-121.60	14.13
33	17	12114500	CEDAR RIVER BELOW BEAR CREEK NEAR CEDAR FALLS, WA	47.34	-121.55	66.56
34	17	12178100	NEWHALEM CREEK NEAR NEWHALEM, WA	48.66	-121.24	69.68
35	18	11274630	DEL PUERTO C NR PATTERSON CA	37.49	-121.21	187.44
36	18	11299600	BLACK C NR COPPEROPOLIS CA	37.96	-120.62	37.32
37	18	11141280	LOPEZ C NR ARROYO GRANDE CA	35.24	-120.47	54.01
38	18	11253310	CANTUA C NR CANTUA CREEK CA	36.40	-120.43	120.44
39	16	10343500	SAGEHEN C NR TRUCKEE CA	39.43	-120.24	27.60
40	18	11284400	BIG C AB WHITES GULCH NR GROVELAND CA	37.84	-120.18	41.72
41	16	10336660	BLACKWOOD C NR TAHOE CITY CA	39.11	-120.16	29.80
42	17	12447390	ANDREWS CREEK NEAR MAZAMA, WA	48.82	-120.15	58.10
43	16	10336645	GENERAL C NR MEEKS BAY CA	39.05	-120.12	19.60
44	16	10336740	LOGAN HOUSE CREEK NEAR GLENBROOK, NV	39.07	-119.94	5.54
45	18	11124500	SANTA CRUZ C NR SANTA YNEZ CA	34.60	-119.91	191.52
46	16	10348850	GALENA C AT GALENA C STATE PARK	39.35	-119.86	19.14
47	16	10310500	CLEAR CREEK NEAR CARSON CITY, NV	39.11	-119.80	39.49
48	18	11237500	PITMAN C BL TAMARACK C CA	37.20	-119.21	59.82
49	18	11230500	BEAR C NR LAKE THOMAS A EDISON CA	37.34	-118.97	135.53
50	18	11098000	ARROYO SECO NR PASADENA CA	34.22	-118.18	41.57
51	18	10263500	BIG ROCK C NR VALYERMO CA	34.42	-117.84	59.46
52	16	10249300	S TWIN R NR ROUND MOUNTAIN, NV	38.89	-117.25	50.20
53	18	10258000	TAHQUITZ C NR PALM SPRINGS CA	33.81	-116.56	43.69
54	18	10259000	ANDREAS C NR PALM SPRINGS CA	33.76	-116.55	22.46
55	18	10259200	DEEP C NR PALM DESERT CA	33.63	-116.39	79.12
56	17	13240000	LAKE FORK PAYETTE RIVER AB JUMBO CR NR MCCALL ID	44.91	-116.00	125.57
57	16	10316500	LAMOILLE C NR LAMOILLE, NV	40.69	-115.48	64.78
58	17	12374250	Mill Cr ab Bassoo Cr nr Niarada MT	47.83	-114.70	50.79
59	16	10244950	STEPTOE C NR ELY, NV	39.20	-114.69	28.20
60	17	12388400	Revais Cr bl West Fork nr Dixon MT	47.27	-114.41	60.84
61	17	12375900	South Crow Creek near Ronan MT	47.49	-114.03	19.72
62	17	13083000	TRAPPER CREEK NR OAKLEY ID	42.17	-113.98	133.18
63	17	12377150	Mission Cr ab Reservoir nr ST Ignatius MT	47.32	-113.98	32.18
64	17	12383500	Big Knife Creek near Arlee MT	47.15	-113.97	17.67
65	17	12381400	South Fork Jocko River near Arlee MT	47.20	-113.85	150.95
66	15	09404450	EAST FORK VIRGIN RIVER NEAR GLENDALE, UT	37.34	-112.60	192.96
67	16	10172800	SOUTH WILLOW CREEK NEAR GRANTSVILLE, UT	40.50	-112.57	11.07
68	16	10172700	VERNON CREEK NEAR VERNON, UT	39.98	-112.38	69.93

69	16	10166430	WEST CANYON CREEK NEAR CEDAR FORT, UT	40.41	-112.10	70.17
70	15	09513780	NEW RIVER NEAR ROCK SPRINGS, AZ.	33.97	-112.10	177.47
71	15	09512280	CAVE CREEK BLW COTTONWOOD CR NEAR CAVE CREEK, AZ.	33.89	-111.95	188.71
72	15	09508300	WET BOTTOM CREEK NEAR CHILDS, AZ.	34.16	-111.69	93.00
73	16	10205030	SALINA CREEK NEAR EMERY, UT	38.91	-111.53	134.60
74	16	10023000	BIG CREEK NEAR RANDOLPH, UT	41.61	-111.25	131.46
75	14	09312600	WHITE RIVER BL TABBYUNE C NEAR SOLDIER SUMMIT, UT	39.88	-111.04	195.29
76	15	09484000	SABINO CREEK NEAR TUCSON, AZ.	32.32	-110.81	103.65
77	17	13018300	CACHE CREEK NEAR JACKSON, WY	43.45	-110.70	27.90
78	14	09378630	RECAPTURE CREEK NEAR BLANDING, UT	37.76	-109.48	10.42
79	14	09378170	SOUTH CREEK ABOVE RESERVOIR NEAR MONTICELLO, UT	37.85	-109.37	21.90
80	10	06154410	Little Peoples Creek near Hays MT	47.97	-108.66	33.41
81	15	09430600	MOGOLLON CREEK NEAR CLIFF, NM	33.17	-108.65	190.52
82	15	09386900	RIO NUTRIA NEAR RAMAH, NM	35.28	-108.55	184.94
83	14	09306242	CORRAL GULCH NEAR RANGELY, CO.	39.92	-108.47	81.99
84	14	09352900	VALLECITO CREEK NEAR BAYFIELD, CO.	37.48	-107.54	188.15
85	10	06278300	SHELL CREEK ABOVE SHELL CREEK RESERVOIR, WY	44.51	-107.40	58.85
86	10	06311000	NORTH FORK POWDER RIVER NEAR HAZELTON, WY	44.03	-107.08	61.23
87	10	06623800	ENCAMPMENT RIVER AB HOG PARK CR, NR ENCAMPMENT, WY	41.02	-106.82	187.66
88	10	06622700	NORTH BRUSH CREEK NEAR SARATOGA, WY	41.37	-106.52	98.70
89	11	07083000	HALFMOON CREEK NEAR MALTA, CO.	39.17	-106.39	60.76
90	14	09066300	MIDDLE CREEK NEAR MINTURN, CO.	39.65	-106.38	15.52
91	14	09066200	BOOTH CREEK NEAR MINTURN, CO.	39.65	-106.32	16.10
92	14	09065500	GORE CREEK AT UPPER STATION, NEAR MINTURN, CO.	39.63	-106.28	37.78
93	14	09066000	BLACK GORE CREEK NEAR MINTURN, CO.	39.60	-106.27	32.41
94	10	06632400	ROCK CREEK AB KING CANYON CANAL, NR ARLINGTON, WY	41.59	-106.22	162.99
95	14	09035900	SOUTH FORK OF WILLIAMS FORK NEAR LEAL, CO.	39.80	-106.03	72.84
96	14	09035800	DARLING CREEK NEAR LEAL, CO.	39.80	-106.03	22.94
97	14	09047700	KEYSTONE GULCH NEAR DILLON, CO.	39.59	-105.97	23.57
98	14	09034900	BOBTAIL CREEK NEAR JONES PASS, CO.	39.76	-105.91	15.65
99	10	06746095	JOE WRIGHT CREEK ABOVE JOE WRIGHT RESERVOIR, CO.	40.54	-105.88	8.90
100	10	06614800	MICHIGAN RIVER NEAR CAMERON PASS, CO.	40.50	-105.87	4.03
101	13	08377900	RIO MORA NEAR TERRERO, NM	35.78	-105.66	139.03
102	13	08267500	RIO HONDO NEAR VALDEZ, NM	36.54	-105.56	96.26
103	13	08271000	RIO LUCERO NEAR ARROYO SECO, NM	36.51	-105.53	43.77
104	13	08269000	RIO PUEBLO DE TAOS NEAR TAOS, NM	36.44	-105.50	163.27
105	13	08380500	GALLINAS CREEK NEAR MONTEZUMA, NM	35.65	-105.32	198.06
106	11	07208500	RAYADO CREEK NEAR CIMARRON, NM	36.37	-104.97	159.22

107	10	06408700	RHOADS FORK NEAR ROCHFORD SD	44.14	-103.86	20.80
108	10	06404000	BATTLE CR NEAR KEYSTONE SD	43.87	-103.34	151.83
109	10	06332515	BEAR DEN CREEK NR MANDAREE, ND	47.79	-102.77	191.49
110	12	08103900	S Fk Rocky Ck nr Briggs, TX	30.91	-98.04	86.00
111	12	08158810	Bear Ck bl FM 1826 nr Driftwood, TX	30.16	-97.94	31.79
112	10	06479215	BIG SIOUX RIVER NR FLORENCE SD	45.18	-97.19	175.28
113	12	08050800	Timber Ck nr Collinsville, TX	33.55	-96.95	100.93
114	10	06803510	LITTLE SALT CREEK NEAR LINCOLN, NEBR.	40.89	-96.68	113.28
115	10	06879650	KINGS C NR MANHATTAN, KS	39.10	-96.60	11.51
116	11	07335700	Kiamichi River near Big Cedar, OK	34.64	-94.61	102.57
117	11	07196900	Baron Fork at Dutch Mills, AR	35.88	-94.49	106.35
118	11	07195800	Flint Creek at Springtown, AR	36.26	-94.43	38.23
119	12	08023080	Bayou Grand Cane near Stanley, LA	31.98	-93.93	187.61
120	8	07362587	Alum Fork Saline River near Reform, AR	34.80	-92.93	69.77
121	11	07263295	Maumelle River at Williams Junction, AR	34.88	-92.77	119.03
122	8	07373000	Big Creek at Pollock, LA	31.54	-92.41	131.18
123	11	07060710	North Sylamore Creek near Fifty Six, AR	36.00	-92.21	150.03
124	7	05454000	Rapid Creek near Iowa City, IA	41.70	-91.49	65.38
125	7	05593900	EAST FORK SHOAL CREEK NEAR COFFEEN, IL	39.15	-89.35	145.45
126	3	02479155	CYPRESS CREEK NR JANICE, MS	31.03	-89.02	137.28
127	7	05592575	HICKORY CREEK NEAR BROWNSTOWN, IL	38.94	-88.95	115.25
128	5	03384450	LUSK CREEK NEAR EDDYVILLE, IL	37.47	-88.55	111.13
129	7	05591550	WHITLEY CREEK NEAR ALLENVILLE, IL	39.51	-88.53	96.21
130	4	04043050	TRAP ROCK RIVER NEAR LAKE LINDEN, MI	47.23	-88.39	76.62
131	3	02430615	MUD CREEK NR FAIRVIEW, MS	34.39	-88.36	28.71
132	6	03592718	LITTLE YELLOW CREEK EAST NR BURNSVILLE, MS	34.84	-88.29	66.99
133	3	02430085	RED BUD CREEK NR MOORES MILL, MS	34.47	-88.28	40.56
134	4	04057800	MIDDLE BRANCH ESCANABA RIVER AT HUMBOLDT, MI	46.50	-87.89	115.87
135	3	02464360	BINION CREEK BELOW GIN CREEK NEAR SAMANTHA AL	33.42	-87.64	148.62
136	3	02465493	ELLIOTTS CREEK AT MOUNDVILLE AL	33.00	-87.62	83.42
137	3	02464146	TURKEY CREEK NEAR TUSCALOOSA	33.41	-87.51	15.82
138	5	03357350	PLUM CREEK NEAR BAINBRIDGE, IND.	39.76	-86.73	7.75
139	5	03368000	BRUSH CREEK NEAR NEBRASKA, IN	39.07	-85.49	29.72
140	4	04105700	AUGUSTA CREEK NEAR AUGUSTA, MI	42.35	-85.35	98.04
141	5	03291780	INDIAN-KENTUCK CREEK NR CANAAN, IND.	38.88	-85.26	71.41
142	4	04115265	FISH CREEK NEAR CRYSTAL, MI	43.25	-84.98	95.78
143	3	02395120	TWO RUN CREEK NEAR KINGSTON, GA	34.24	-84.89	84.01
144	3	02384540	MILL CREEK NEAR CRANDALL, GA	34.87	-84.72	21.37

145	3	02381600	FAUSETT CREEK NEAR TALKING ROCK, GA	34.57	-84.47	10.32
146	3	02349900	TURKEY CREEK AT BYROMVILLE, GA	32.20	-83.90	122.87
147	5	03241500	Massies Creek at Wilberforce OH	39.72	-83.88	170.91
148	3	02212600	FALLING CREEK NEAR JULIETTE, GA	33.10	-83.72	187.96
149	6	03504000	NANTAHALA RIVER NEAR RAINBOW SPRINGS, NC	35.13	-83.62	134.52
150	3	02178400	TALLULAH RIVER NEAR CLAYTON, GA	34.89	-83.53	151.28
151	3	02324400	FENHOLLOWAY RIVER NEAR FOLEY, FLA.	30.10	-83.47	176.27
152	6	03500240	CARTOOGECHAYE CREEK NEAR FRANKLIN, NC	35.16	-83.39	145.86
153	5	03280700	CUTSHIN CREEK AT WOOTON, KY	37.17	-83.31	158.22
154	5	03237280	Upper Twin Creek at McGaw OH	38.64	-83.22	32.95
155	4	04197170	Rock Creek at Tiffin OH	41.11	-83.17	95.21
156	4	04161580	STONY CREEK NEAR ROMEO, MI	42.80	-83.09	64.31
157	6	03460000	CATALOOCHEE CREEK NEAR CATALOOCHEE, NC	35.67	-83.07	127.02
158	6	03455500	W F PIGEON R ABOVE LAKE LOGAN NR HAZELWOOD, NC	35.40	-82.94	72.95
159	3	02216180	TURNPIKE CREEK NEAR MCRAE, GA	31.99	-82.92	129.11
160	6	03456500	EAST FORK PIGEON RIVER NEAR CANTON, NC	35.46	-82.87	133.43
161	3	02193340	KETTLE CREEK NEAR WASHINGTON, GA	33.68	-82.86	87.87
162	6	03439000	FRENCH BROAD RIVER AT ROSMAN, NC	35.14	-82.82	178.67
163	6	03450000	BEETREE CREEK NEAR SWANNANOVA, NC	35.65	-82.41	14.08
164	3	02300700	BULLFROG CREEK NEAR WIMAUMA FL	27.79	-82.35	73.84
165	3	02299950	MANATEE RIVER NEAR MYAKKA HEAD FL	27.47	-82.21	174.27
166	6	03463300	SOUTH TOE RIVER NEAR CELO, NC	35.83	-82.18	112.16
167	3	02297155	HORSE CREEK NEAR MYAKKA HEAD FL	27.49	-82.02	93.60
168	5	03140000	Mill Creek near Coshocton OH	40.36	-81.86	70.35
169	3	02198100	BEAVERDAM CREEK NEAR SARDIS, GA	32.94	-81.82	79.49
170	3	02152100	FIRST BROAD RIVER NEAR CASAR, NC	35.49	-81.68	154.99
171	6	03471500	S F HOLSTON RIVER AT RIVERSIDE NR CHILHOWIE, VA	36.76	-81.63	198.16
172	3	02143040	JACOB FORK AT RAMSEY, NC	35.59	-81.57	66.48
173	3	02111180	ELK CREEK AT ELKVILLE, NC	36.07	-81.40	131.47
174	5	03165000	CHESTNUT CREEK AT GALAX, VA	36.65	-80.92	102.00
175	3	02231342	FT DRUM CREEK AT SUNSHINE ST PKY NEAR FT DRUM, FL	27.57	-80.80	111.56
176	3	02125000	BIG BEAR CR NR RICHFIELD, NC	35.33	-80.34	144.55
177	4	04213075	Brandy Run near Girard, PA	41.99	-80.29	11.65
178	5	03049800	Little Pine Creek near Etna, PA	40.52	-79.94	14.89
179	3	02055100	TINKER CREEK NEAR DALEVILLE, VA	37.42	-79.94	30.54
180	2	02011460	BACK CREEK NEAR SUNRISE, VA	38.25	-79.77	156.34
181	5	03076600	BEAR CREEK AT FRIENDSVILLE, MD	39.66	-79.39	127.40
182	2	01594950	MCMILLAN F NEAR FORT PENDLETON, MD	39.28	-79.39	6.12

183	2	01620500	NORTH RIVER NEAR STOKESVILLE, VA	38.34	-79.24	44.74
184	3	02096846	CANE CREEK NEAR ORANGE GROVE, NC	35.99	-79.21	19.57
185	3	02077200	HYCO CREEK NEAR LEASBURG, NC	36.40	-79.20	121.69
186	3	02102908	FLAT CREEK NEAR INVERNESS, NC	35.18	-79.18	19.73
187	5	03078000	CASSELMAN RIVER AT GRANTSVILLE, MD	39.70	-79.14	161.48
188	2	01596500	SAVAGE RIVER NEAR BARTON, MD	39.57	-79.10	124.65
189	2	02027500	PINEY RIVER AT PINEY RIVER, VA	37.70	-79.03	123.34
190	5	03011800	Kinzua Creek near Guffey, PA	41.77	-78.72	100.10
191	5	03028000	West Branch Clarion River at Wilcox, PA	41.58	-78.69	161.11
192	2	02038850	HOLIDAY CREEK NEAR ANDERSONVILLE, VA	37.42	-78.64	22.00
193	5	03026500	Sevenmile Run near Rasselas, PA	41.63	-78.58	20.31
194	3	02051000	NORTH MEHERRIN RIVER NEAR LUNENBURG, VA	37.00	-78.35	144.82
195	2	01542810	Waldy Run near Emporium, PA	41.58	-78.29	13.62
196	4	04216418	TONAWANDA CREEK AT ATTICA NY	42.86	-78.28	196.47
197	2	01557500	Bald Eagle Creek at Tyrone, PA	40.68	-78.23	115.30
198	2	01613050	Tonoloway Creek near Needmore, PA	39.90	-78.13	27.90
199	2	01545600	Young Womans Creek near Renovo, PA	41.39	-77.69	120.00
200	2	01547700	Marsh Creek at Blanchard, PA	41.06	-77.61	113.54
201	2	01658500	S F QUANTICO CREEK NEAR INDEPENDENT HILL, VA	38.59	-77.43	19.34
202	2	01567500	Bixler Run near Loysville, PA	40.37	-77.40	38.77
203	2	01549500	Blockhouse Creek near English Center, PA	41.47	-77.23	97.49
204	2	01591400	CATTAIL CREEK NEAR GLENWOOD, MD	39.26	-77.05	59.09
205	2	01516500	Corey Creek near Mainesburg, PA	41.79	-77.01	31.48
206	2	01586610	MORGAN RUN NEAR LOUISVILLE, MD	39.45	-76.96	72.70
207	2	01669000	PISCATAWAY CREEK NEAR TAPPAHANNOCK, VA	37.88	-76.90	71.84
208	2	01583500	WESTERN RUN AT WESTERN RUN, MD	39.51	-76.68	155.85
209	4	04233000	CAYUGA INLET NEAR ITHACA NY	42.39	-76.54	91.90
210	2	01552500	Muncy Creek near Sonestown, PA	41.36	-76.53	60.64
211	2	01486000	MANOKIN BRANCH NEAR PRINCESS ANNE, MD	38.21	-75.67	11.18
212	2	01451800	Jordan Creek near Schnecksville, PA	40.66	-75.63	135.84
213	2	01487000	NANTICOKE RIVER NEAR BRIDGEVILLE, DE	38.73	-75.56	187.41
214	2	01484100	BEAVERDAM BRANCH AT HOUSTON, DE	38.91	-75.51	9.00
215	2	01485500	NASSAWANGO CREEK NEAR SNOW HILL, MD	38.23	-75.47	141.54
216	2	01440400	Brodhead Creek near Analomink, PA	41.08	-75.21	175.21
217	2	01440000	FLAT BROOK NEAR FLATBROOKVILLE NJ	41.11	-74.95	167.72
218	2	01411300	TUCKAHOE RIVER AT HEAD OF RIVER NJ	39.31	-74.82	79.32
219	2	01415000	TREMPER KILL NEAR ANDES NY	42.12	-74.82	85.63
220	2	01414500	MILL BROOK NEAR DUNRAVEN NY	42.11	-74.73	64.45

221	2	01435000	NEVERSINK RIVER NEAR CLARYVILLE NY	41.89	-74.59	172.46
222	2	01466500	MCDONALDS BRANCH IN LEBANON STATE FOREST NJ	39.89	-74.51	5.38
223	2	01434025	BISCUIT BK ABOVE PIGEON BK AT FROST VALLEY NY	42.00	-74.50	9.70
224	2	01365000	RONDOUT CREEK NEAR LOWES CORNERS NY	41.87	-74.49	99.57
225	2	01350140	MINE KILL NEAR NORTH BLENHEIM NY	42.43	-74.47	43.76
226	2	01350080	MANOR KILL AT WEST CONESVILLE NEAR GILBOA NY	42.38	-74.41	83.84
227	2	01333000	GREEN RIVER AT WILLIAMSTOWN, MA	42.71	-73.20	112.16
228	1	01187300	HUBBARD RIVER NR. WEST HARTLAND, CT.	42.04	-72.94	53.92
229	1	01170100	GREEN RIVER NEAR COLRAIN, MA	42.70	-72.67	106.99
230	1	01142500	AYERS BROOK AT RANDOLPH, VT	43.93	-72.66	82.17
231	1	01195100	INDIAN RIVER NEAR CLINTON, CT.	41.31	-72.53	14.84
232	1	01139800	EAST ORANGE BRANCH AT EAST ORANGE, VT	44.09	-72.34	22.80
233	1	01121000	MOUNT HOPE RIVER NEAR WARRENVILLE, CT.	41.84	-72.17	70.25
234	1	01162500	PRIEST BROOK NEAR WINCHENDON, MA	42.68	-72.12	49.71
235	1	01123000	LITTLE RIVER NEAR HANOVER, CT.	41.67	-72.05	77.85
236	1	01134500	MOOSE RIVER AT VICTORY, VT	44.51	-71.84	195.13
237	1	01118300	PENDLETON HILL BROOK NEAR CLARKS FALLS, CT.	41.47	-71.83	10.36
238	1	01054200	Wild River at Gilead, ME	44.39	-70.98	180.98
239	1	01073000	OYSTER RIVER NEAR DURHAM, NH	43.15	-70.97	31.30
240	1	01057000	Little Androscoggin River near South Paris, ME	44.30	-70.54	190.92

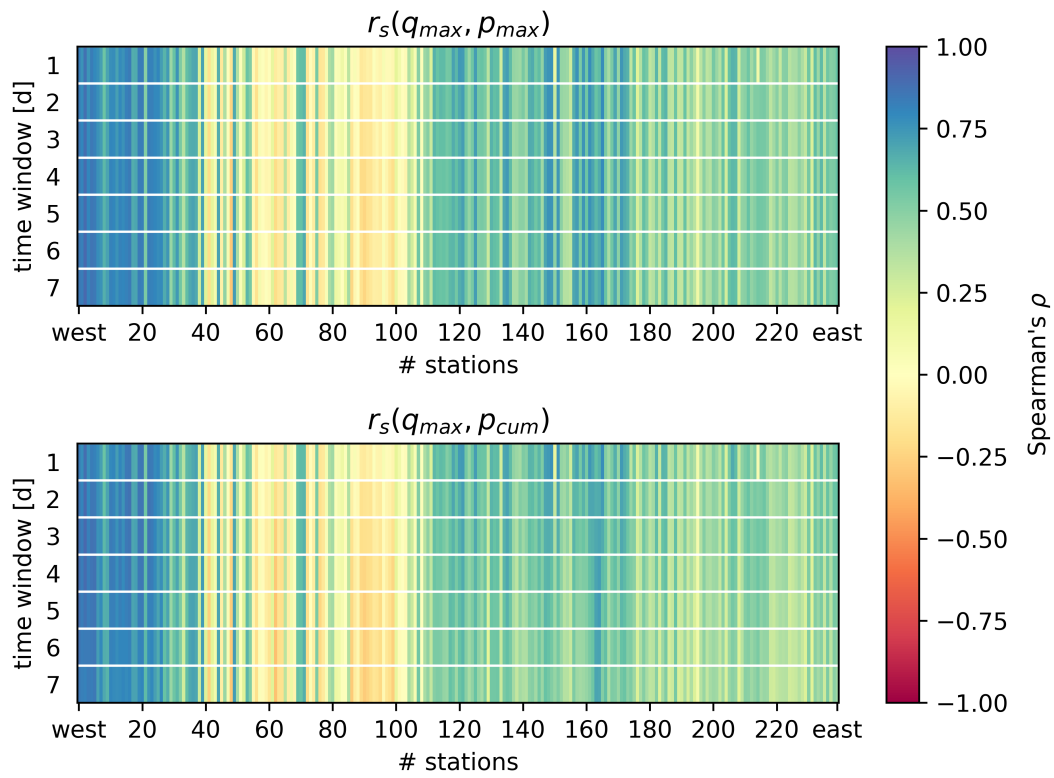


Figure S1. Correlation between precipitation and specific discharge for different time windows

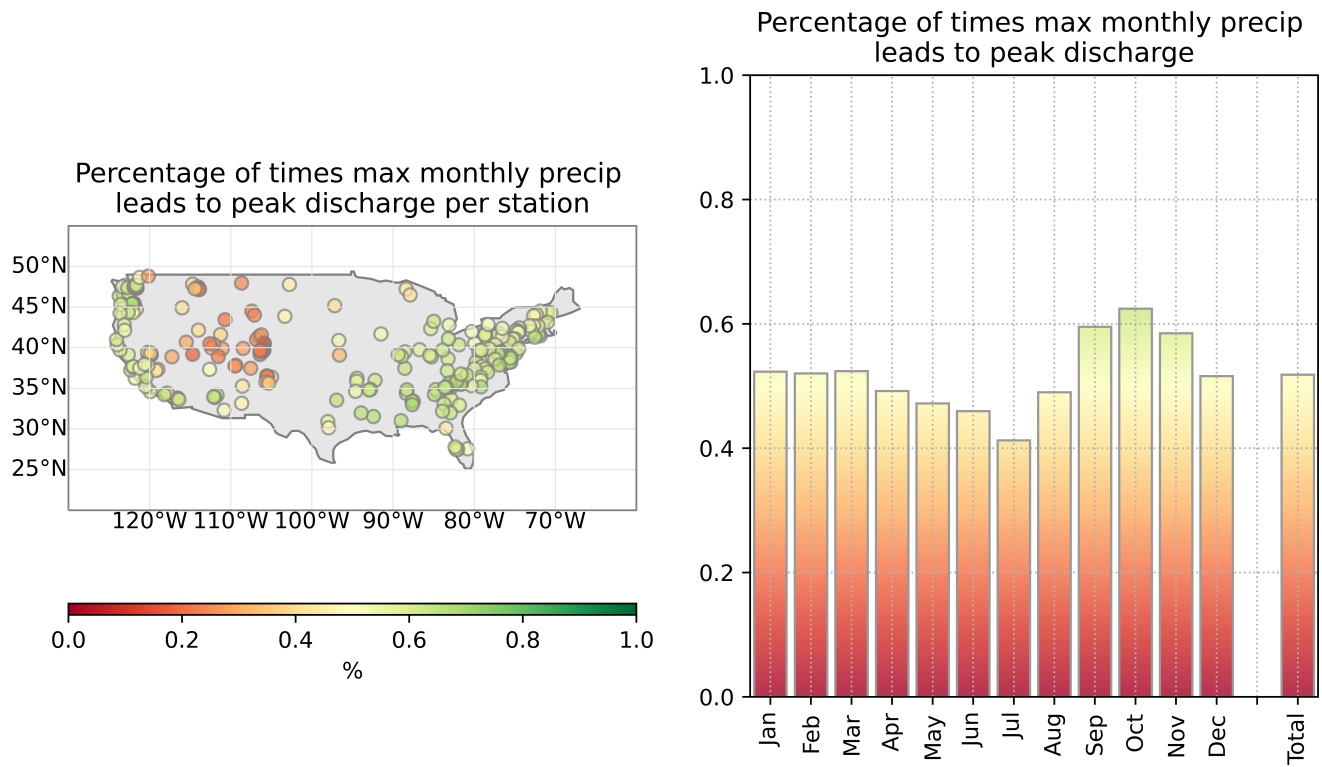


Figure S2. Comparison between the daily maximum precipitation occurred in a time window of 7 days prior to the maximum daily discharge event in any given month ($P_{max,7}$) and the maximum daily precipitation of the corresponding month ($P_{max,month}$). The map on the left shows the percentage of time the $P_{max,7}$ corresponds to $P_{max,month}$ per catchment. The plot on the right shows the percentage of time the $P_{max,7}$ corresponds to $P_{max,month}$ in a given month. The results are aggregated across all the catchments investigated.

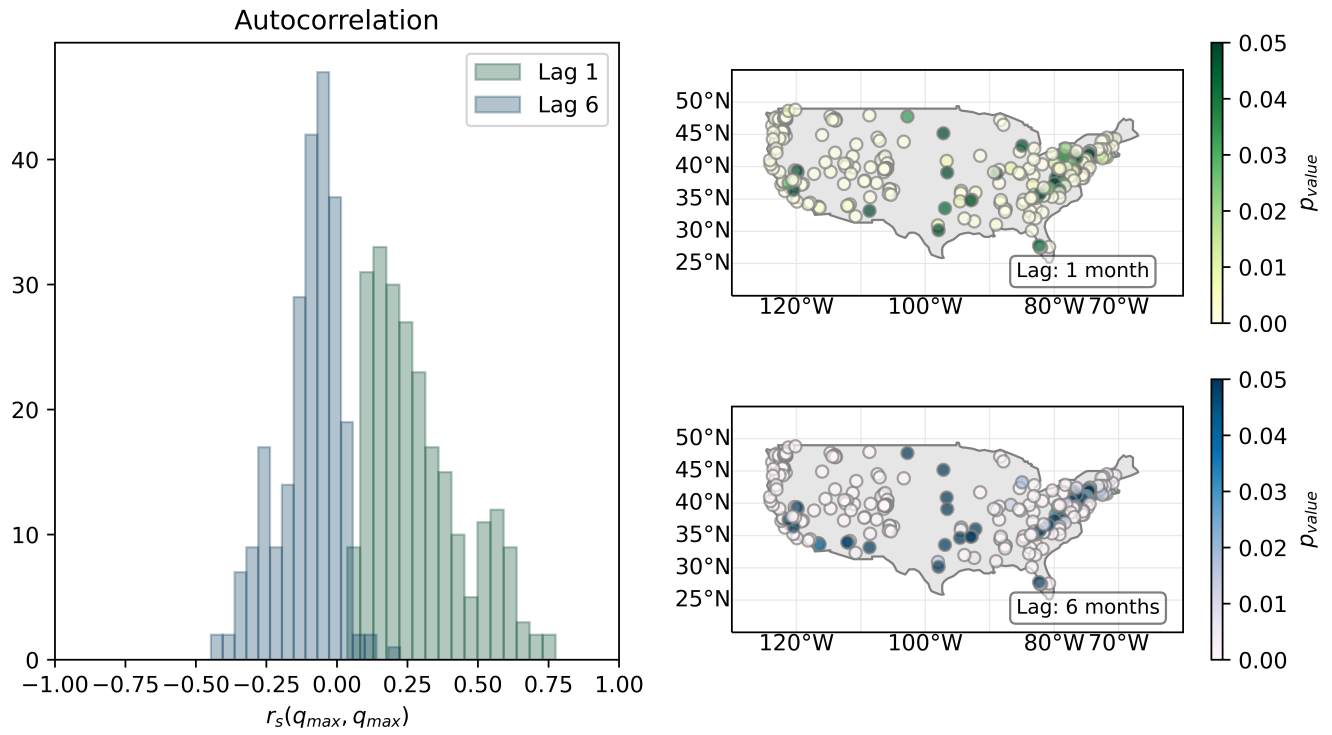


Figure S3. Maximum daily river discharge in any given month autocorrelation analysis. The left panel shows distribution of the autocorrelation calculated in each station for time lag equal to 1 and 6 months. Right panels show the results of the Ljung–Box test in terms of p -value. The Ljung–Box test Null-Hypothesis H_0 is data independently distributed, against alternatives.