



Supplement of

Flash drought onset over the contiguous United States: sensitivity of inventories and trends to quantitative definitions

Mahmoud Osman et al.

Correspondence to: Mahmoud Osman (mahmoud.osman@jhu.edu)

The copyright of individual parts of the supplement might differ from the CC BY 4.0 License.

Supplementary Figures:

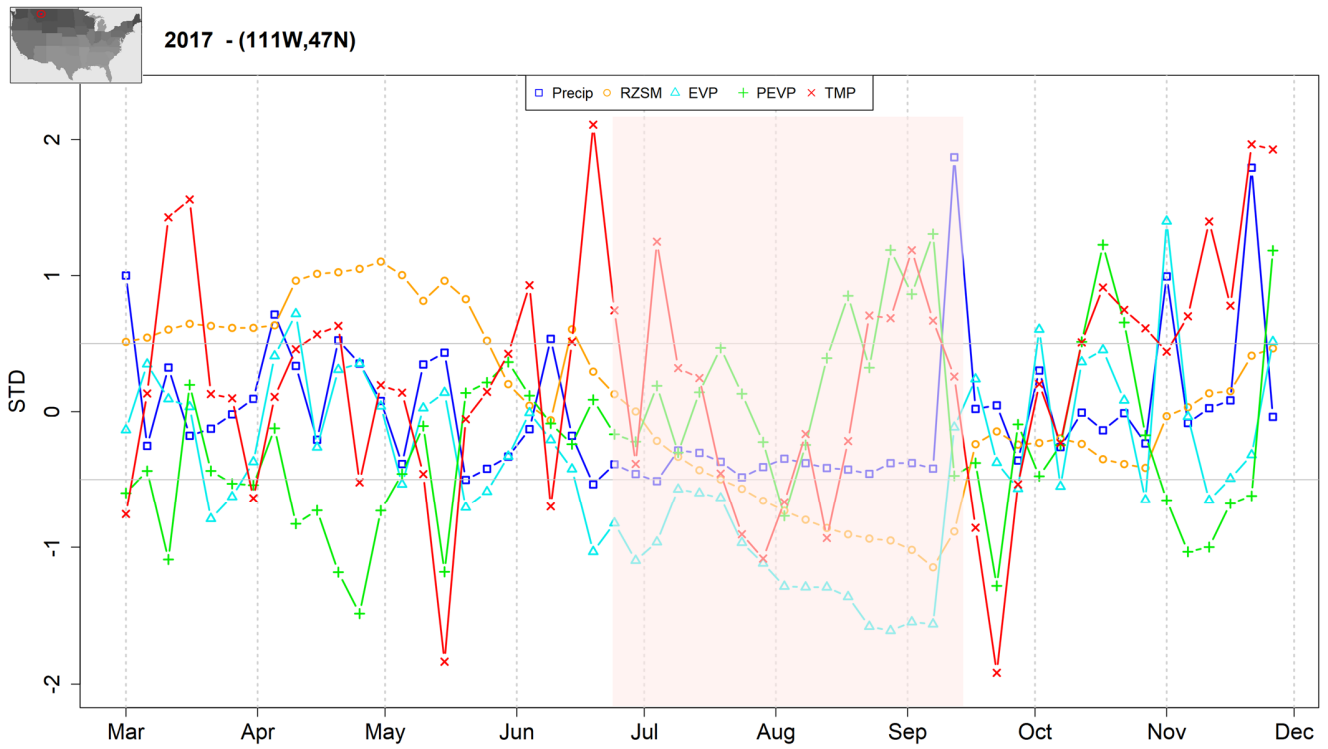


Figure S1: Timeseries of standardized main climate variables formulating the different flash droughts definitions at the selected grid point in Fig. 2 during the 2017 Northern Plains flash drought event. Red-shaded region represents the flash drought event according to the SMVI definition. Grey horizontal lines represent ± 0.5 standard deviation which is roughly equivalent to the 30th percentile of each variable's climatology.



Figure S2: Correlation matrices for all Bukovsky regions from (a) to (y): Appalachia, Central, CPlains, DeepSouth, Desert, East, EastCoast, GreatBasin, GreatLakes, GreatPlains, Mezquital, MidAtlantic, MtWest, NorthAtlantic, NPlains, NRockies, PacificNW, PacificSW, Prairie, Rockies, South, Southeast, Southwest, SPlains, SRockies.

2012 Central US flash drought

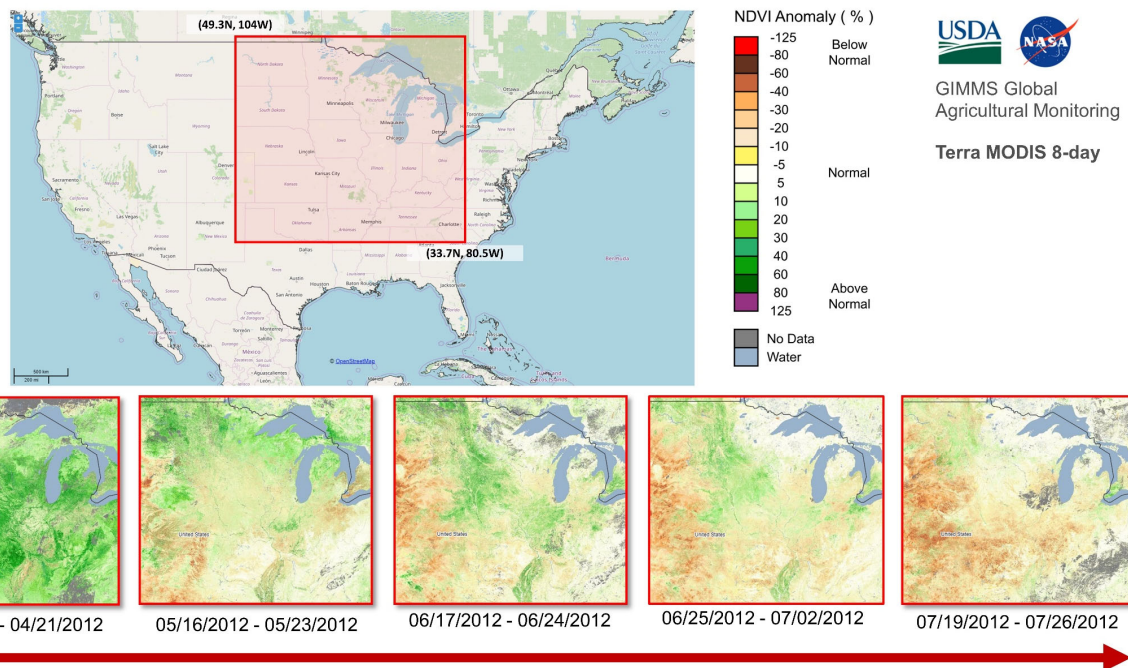
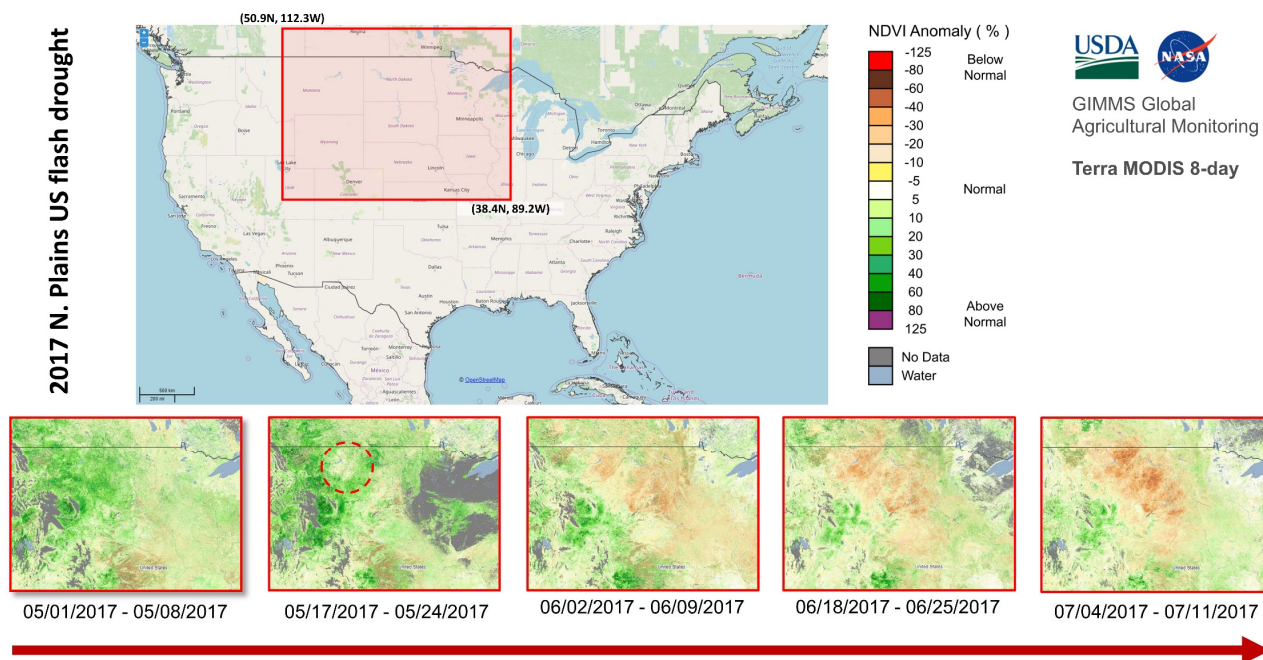


Figure S3: Tempo-spatial change in NDVI within selected flash drought impacted regions in 2012. (background map: ©OpenStreetMap contributors, CC BY-SA).

2017 N. Plains US flash drought



15 Figure S4: Similar to Fig. S2 for 2017 flash drought. (background map: ©OpenStreetMap contributors, CC BY-SA).