



Supplement of

Characteristics and process controls of statistical flood moments in Europe – a data-based analysis

David Lun et al.

Correspondence to: David Lun (lun@hydro.tuwien.ac.at)

The copyright of individual parts of the supplement might differ from the article licence.

MAF

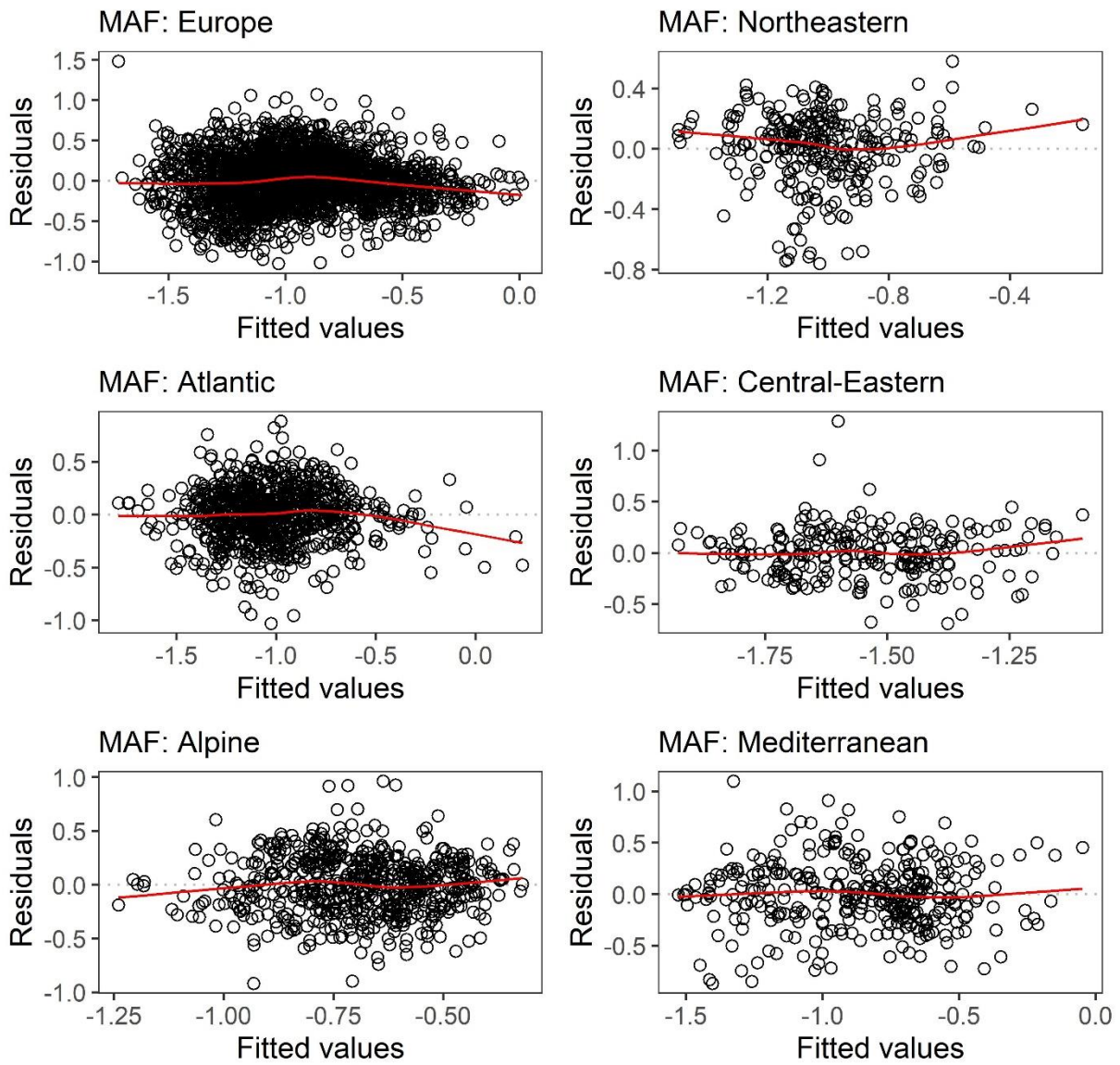


Figure S1: Scatter plots of fitted values and residuals of regional regression models for MAF. Red lines are drawn via LOWESS smoothing.

CV

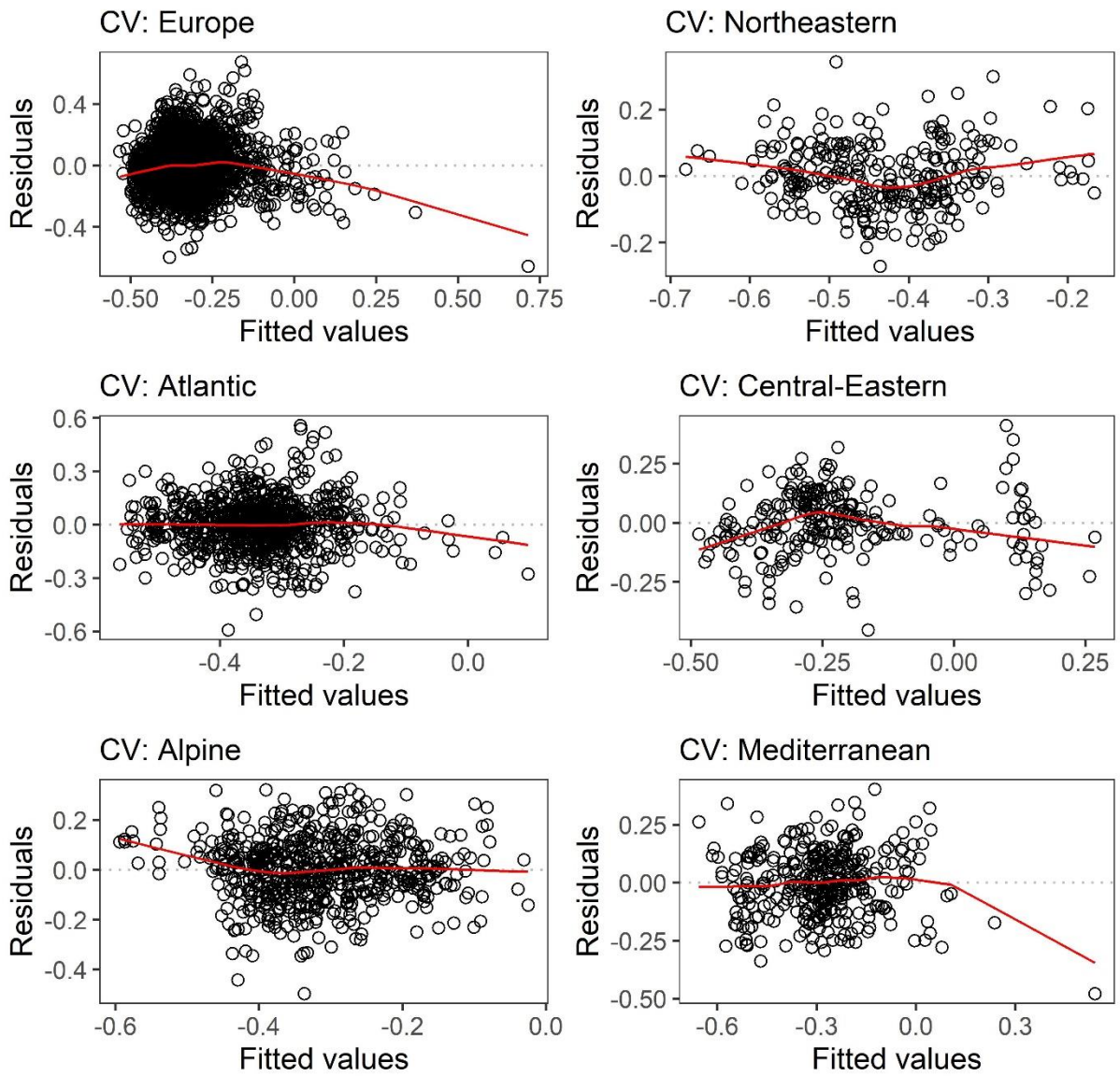


Figure S2: Scatter plots of fitted values and residuals of regional regression models for CV. Red lines are drawn via LOWESS smoothing.

MAF

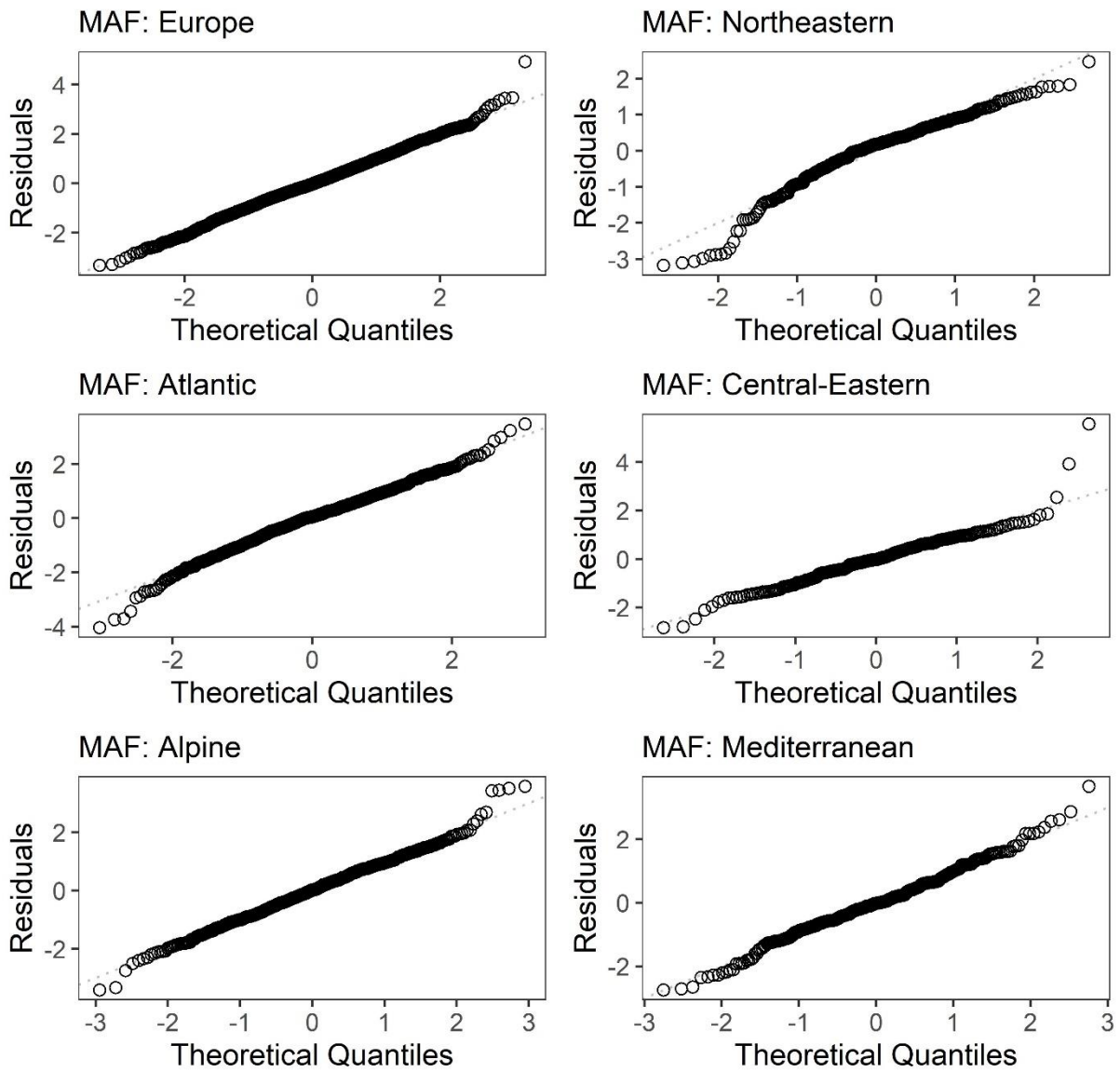


Figure S3: Q-Q plot of standardized residuals of regional regression models for MAF.

CV

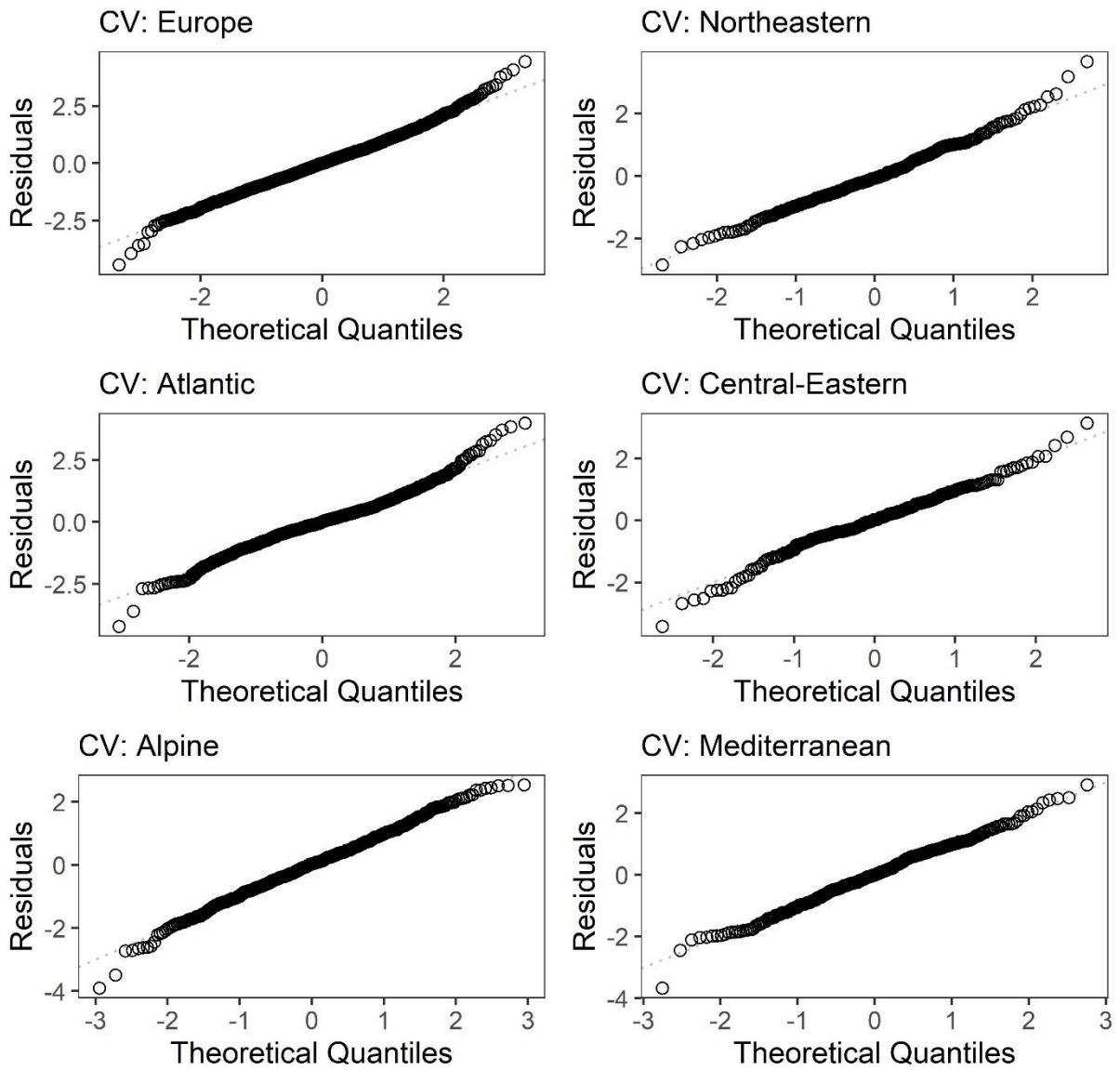


Figure S4: Q-Q plot of standardized residuals of regional regression models for CV.

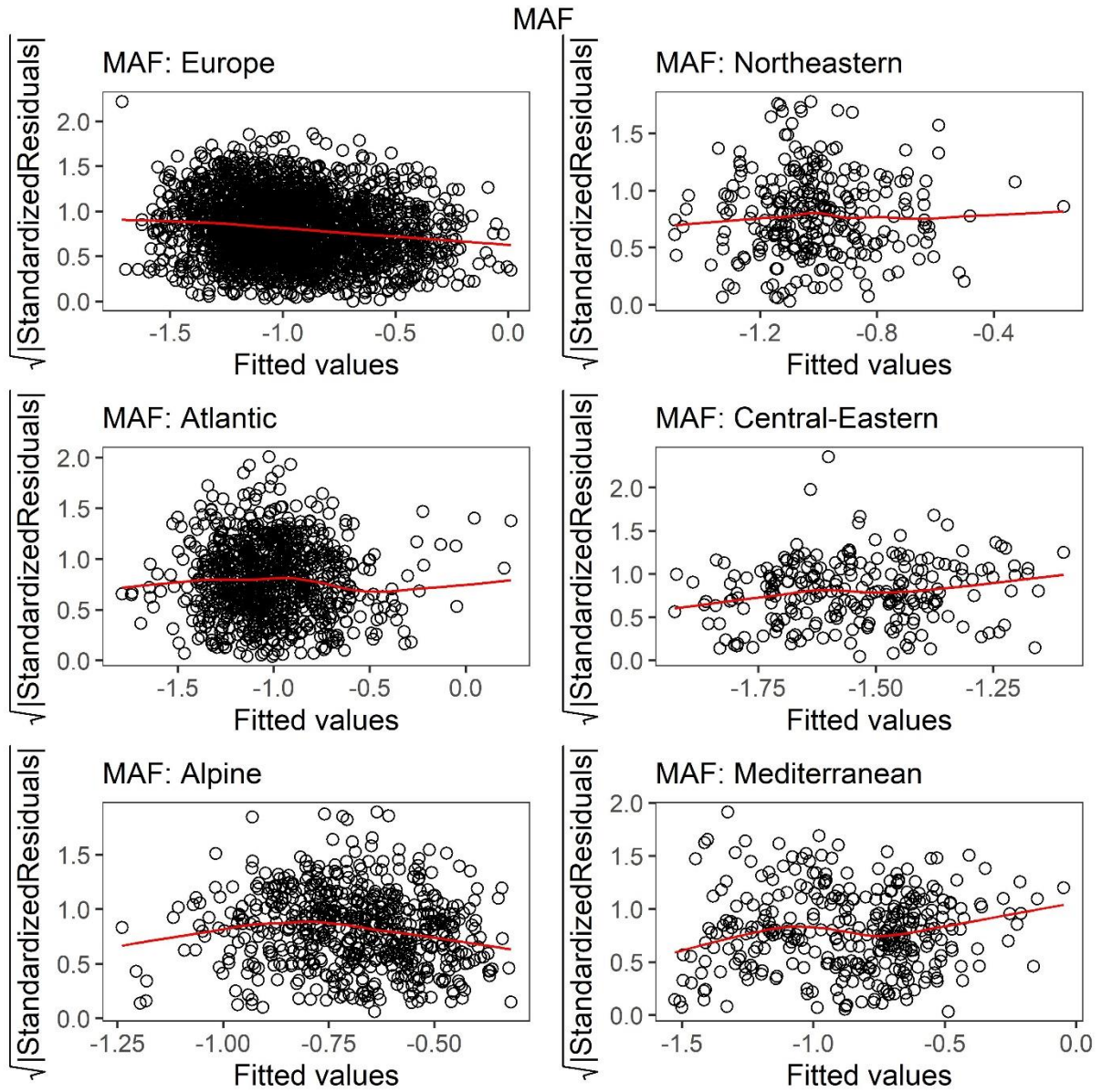


Figure S5: Scatter plots of fitted values and square root of absolute value of standardized residuals of regional regression models for MAF. Red lines are drawn via LOWESS smoothing.

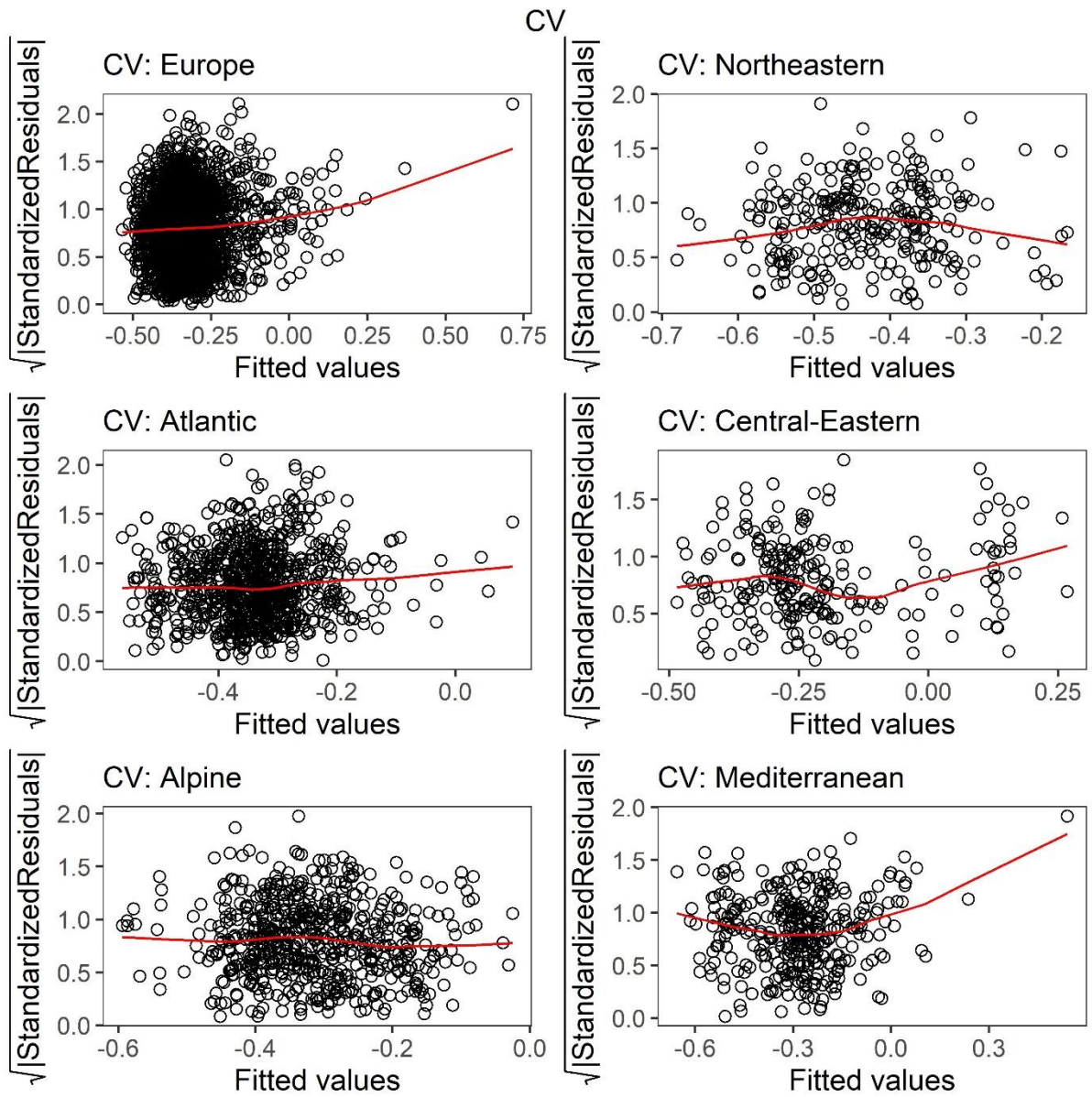


Figure S6: Scatter plots of fitted values and square root of absolute value of standardized residuals of regional regression models for CV. Red lines are drawn via LOWESS smoothing.

Table S1: Row-indices of omitted catchments for regional regression models. The row-indices refer to the supplementary material of Blöschl, Hall et al. (2019). Only catchments that were used in their Figure 1 are used in this paper.

221
320
415
416
566
601
630
632
969
2154
2232
3382
3456
3467
3468
3511
3570
3593
3610
3620
3640
3679
