

Hysteron Off

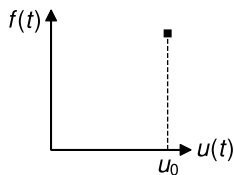
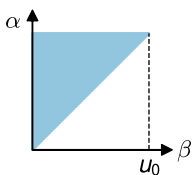
Hysteron On

Limiting Triangle

Output vs. Input

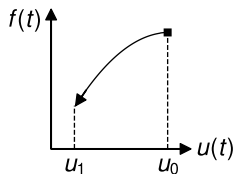
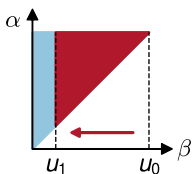
(a) Positive saturation

$$u_0 \geq \alpha_0$$



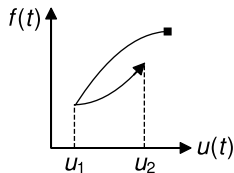
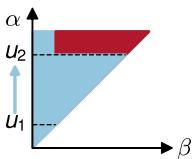
(b) Decrease in input:

$$u_0 \rightarrow u_1$$



(c) Increase in input:

$$u_1 \rightarrow u_2$$



(d) Decrease in input:

$$u_2 \rightarrow u_3$$

