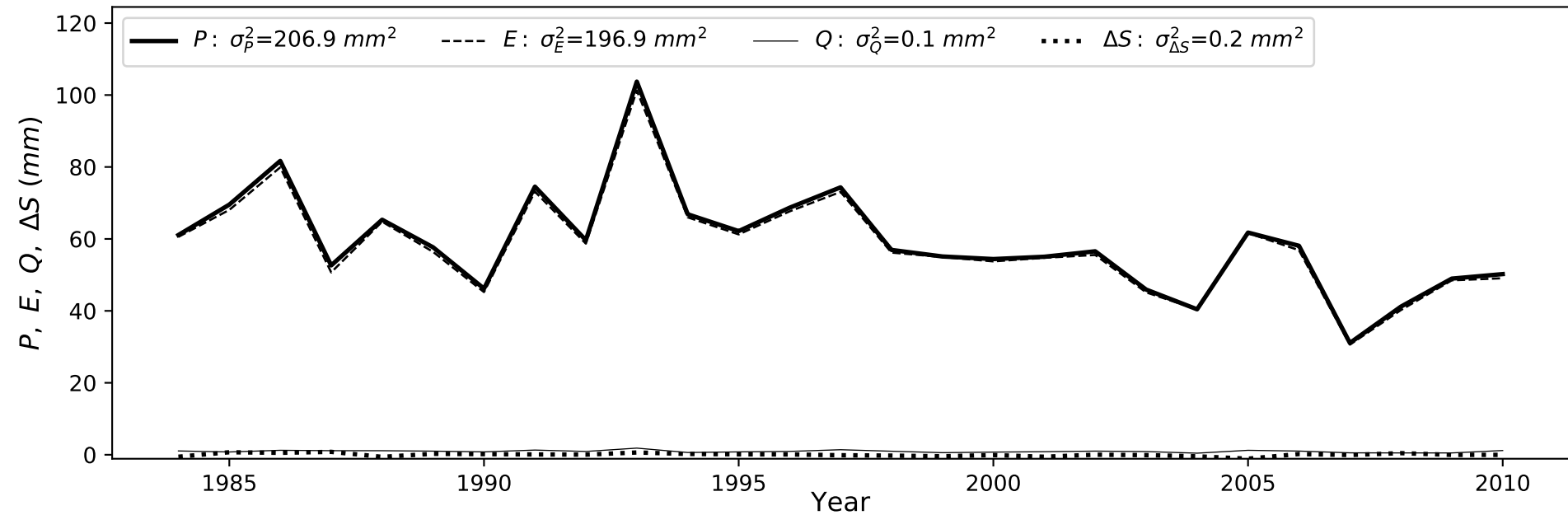


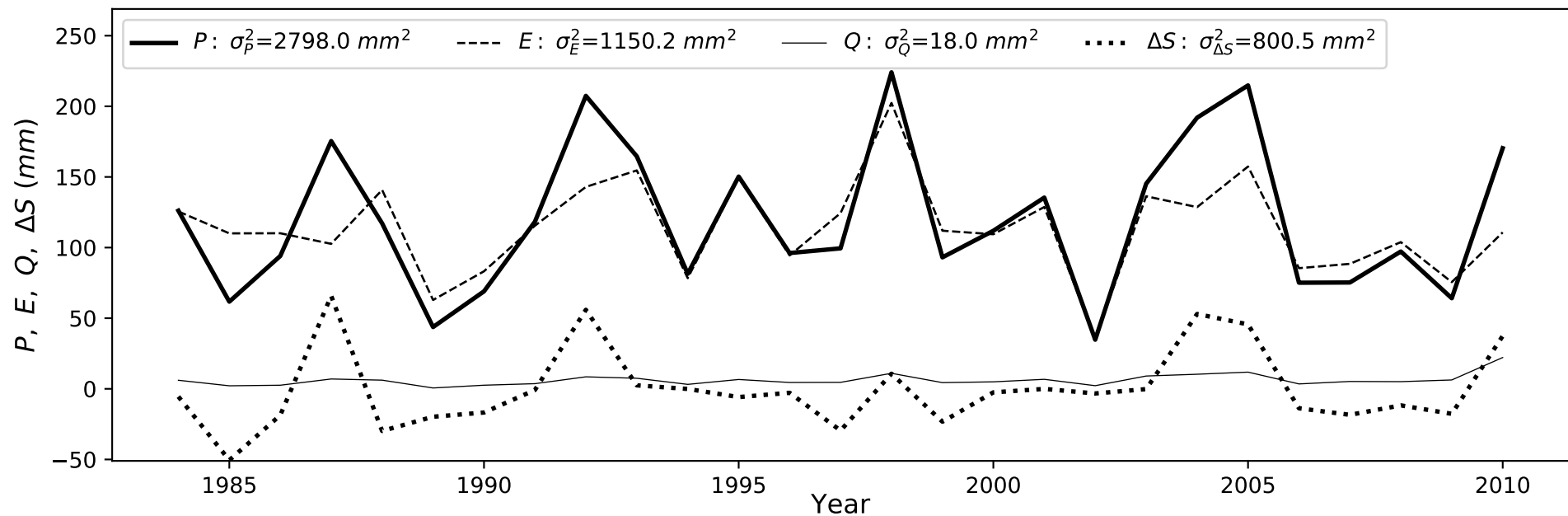
(a) Site 1

(b) Variance-covariance matrix (Site 1, unit:  $\text{mm}^2$ )

	$E$	$Q$	$\Delta S$
$E$	196.9	3.4	1.5
$Q$	3.4	0.1	0.0
$\Delta S$	1.5	0.0	0.2
Inter-annual variance of $P$ : 206.9			

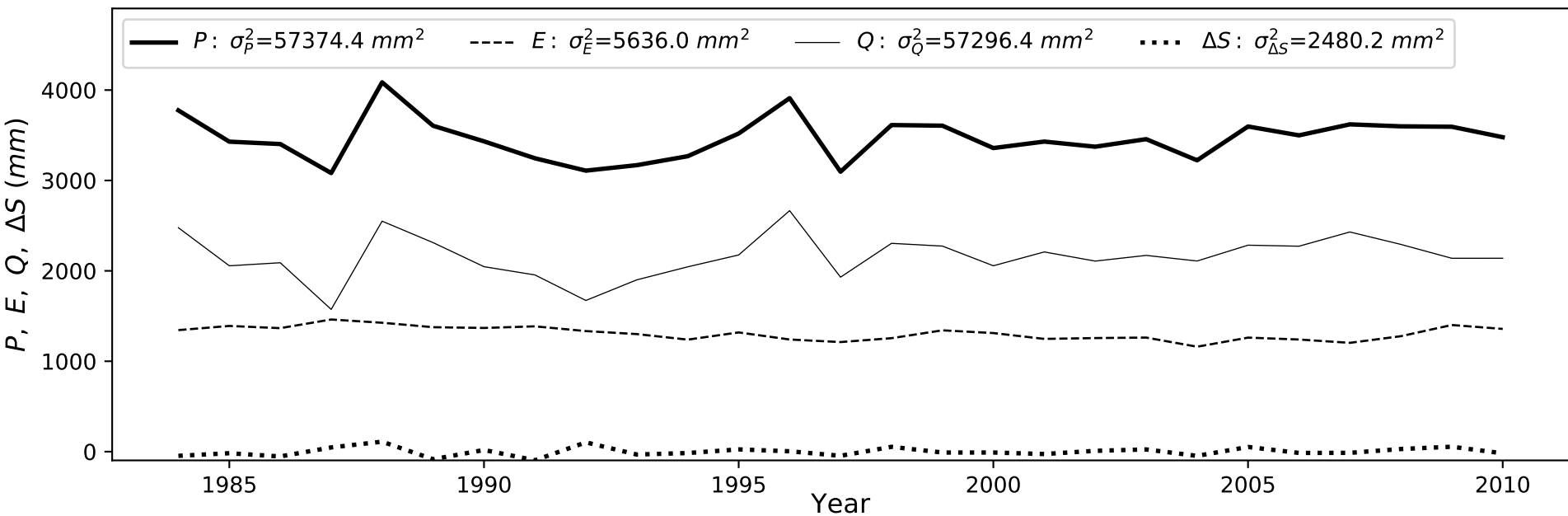
\*Note: The values along the diagonal of each line are variance values for  $E$ ,  $Q$ , and  $\Delta S$ , and other values are covariance values between the two crossed components.

(c) Site 2

(d) Variance-covariance matrix (Site 2, unit:  $\text{mm}^2$ )

	$E$	$Q$	$\Delta S$
$E$	1150.2	71.2	269.2
$Q$	71.2	18.0	74.3
$\Delta S$	269.2	74.3	800.5
Inter-annual variance of $P$ : 2798.0			

(e) Site 3

(f) Variance-covariance matrix (Site 3, unit:  $\text{mm}^2$ )

	$E$	$Q$	$\Delta S$
$E$	5636.0	-4548.6	651.7
$Q$	-4548.6	57296.4	-122.2
$\Delta S$	651.7	-122.2	2480.2
Inter-annual variance of $P$ : 57374.4			