



Supplement of

Evolution and dynamics of the vertical temperature profile in an oligotrophic lake

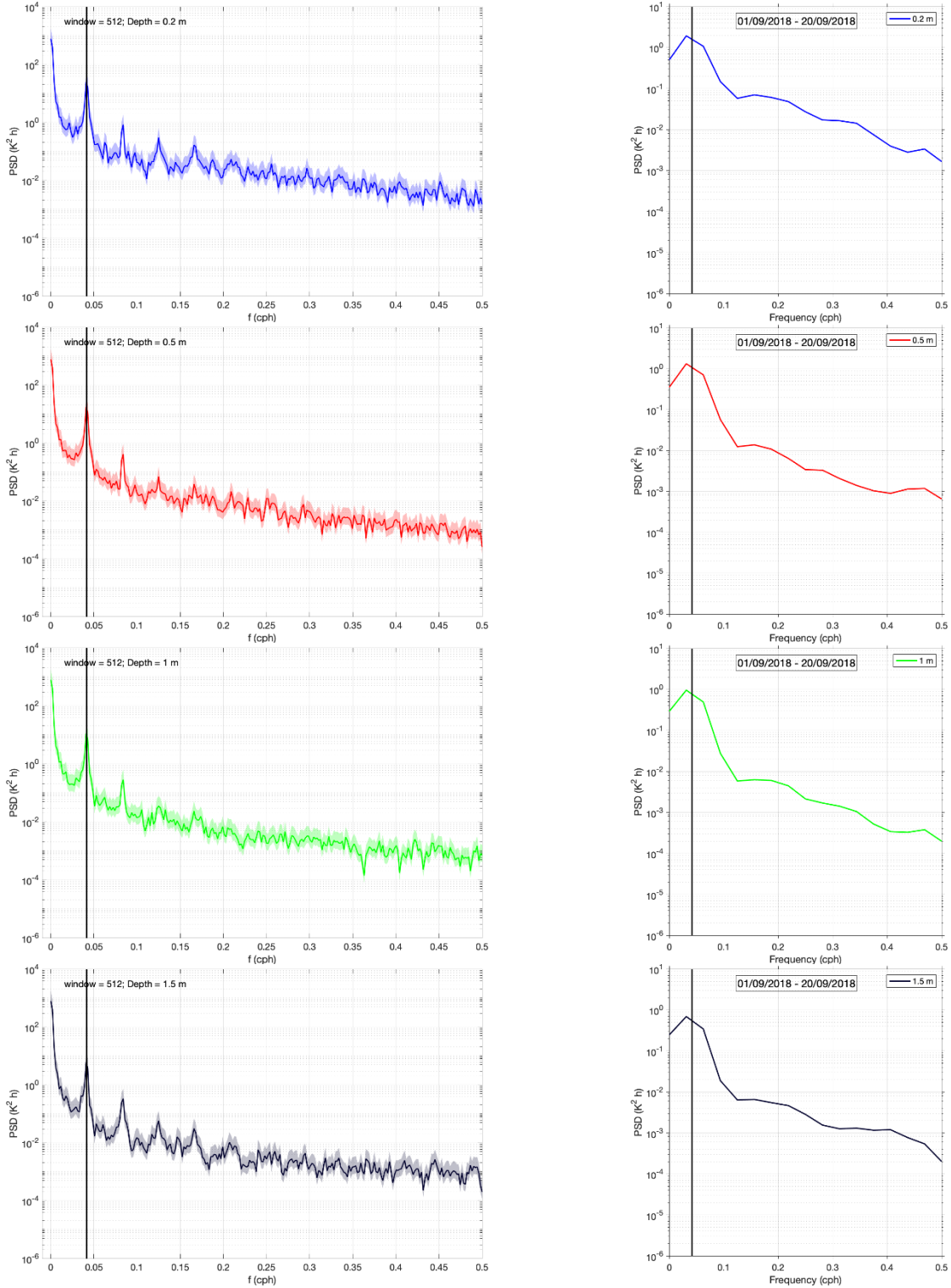
Zvezdana B. Klaić et al.

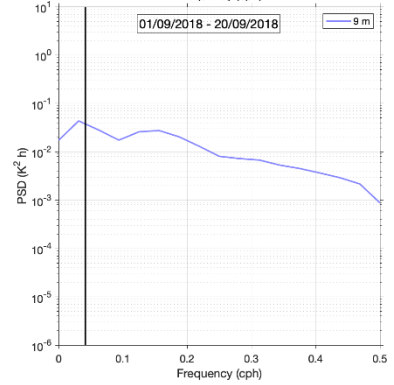
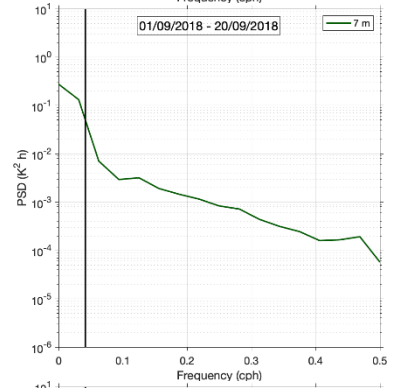
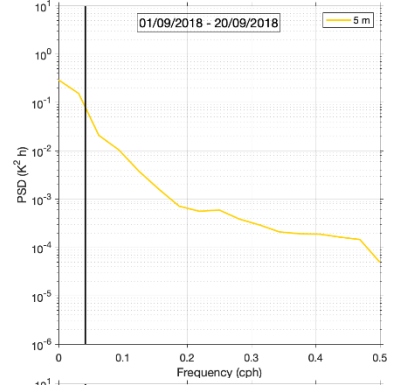
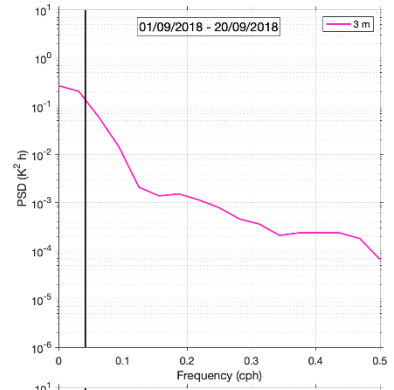
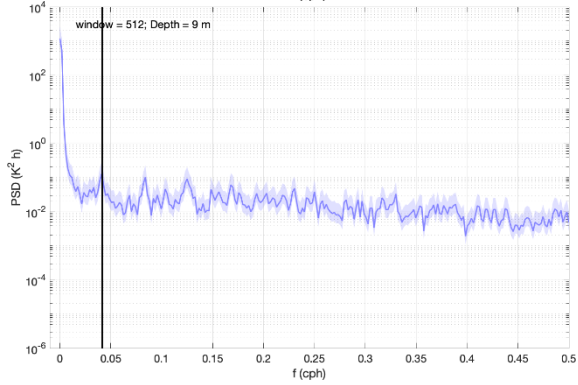
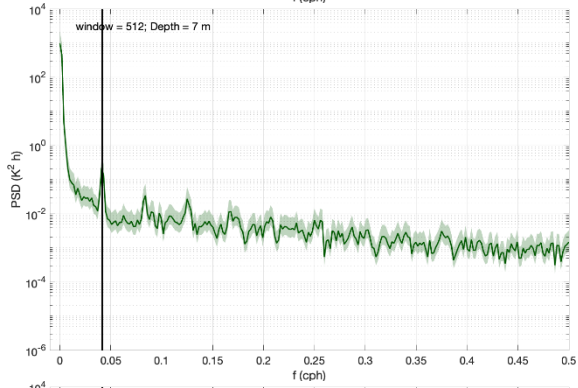
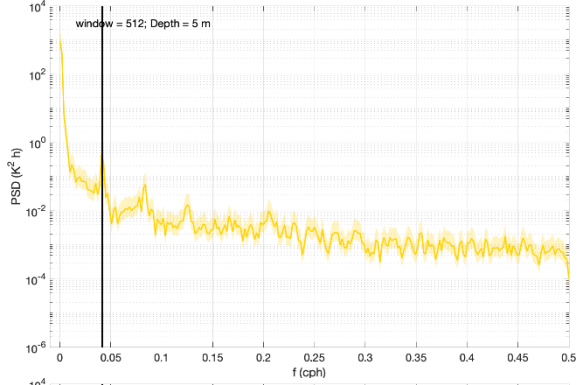
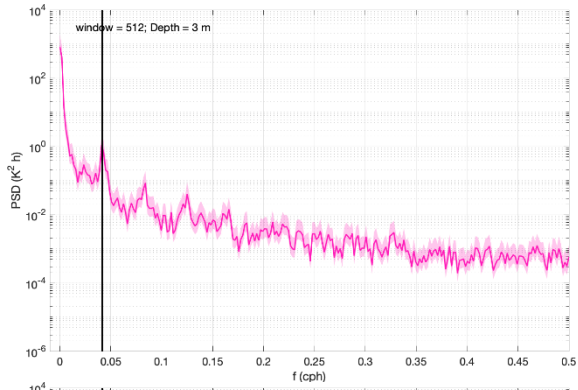
Correspondence to: Zvezdana B. Klaić (zklaic@gfz.hr)

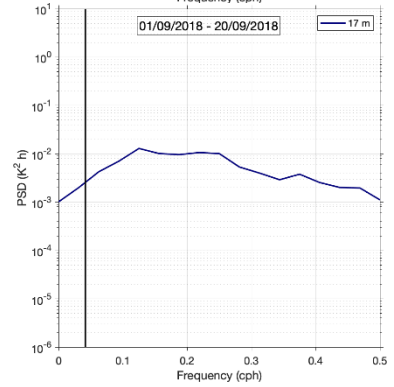
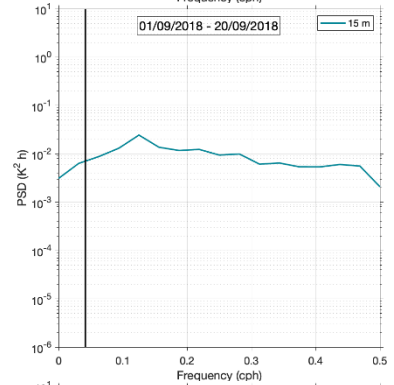
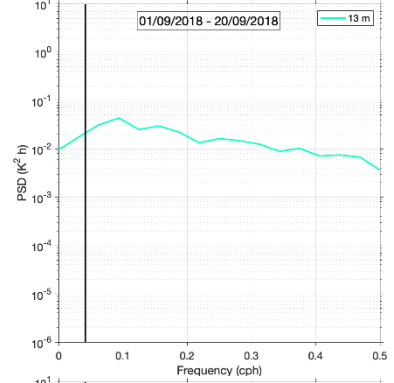
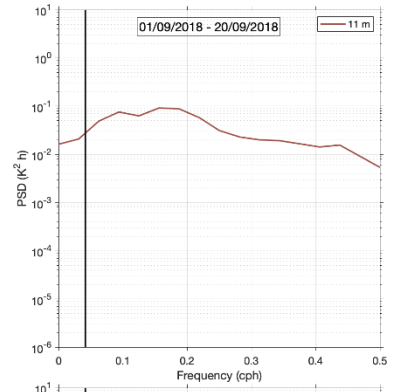
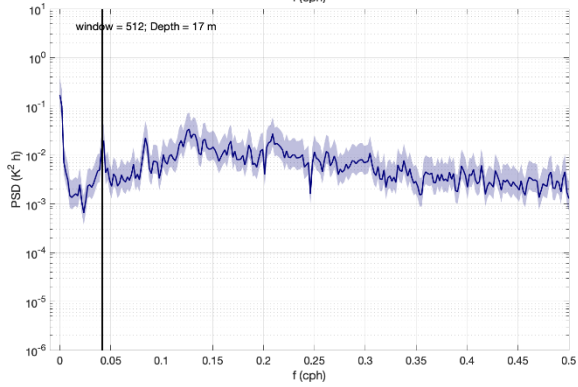
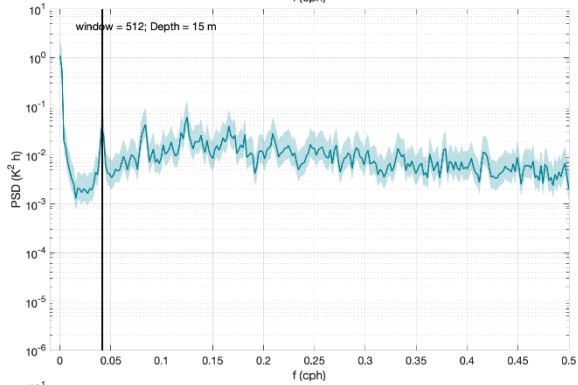
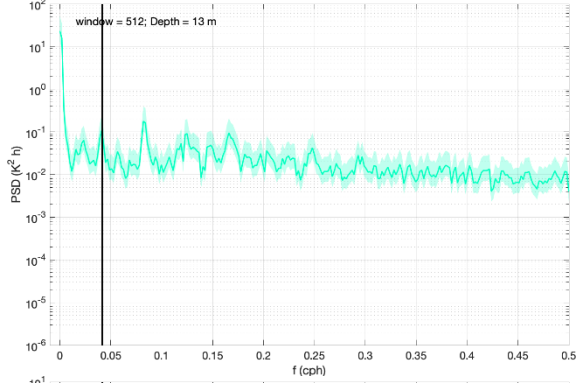
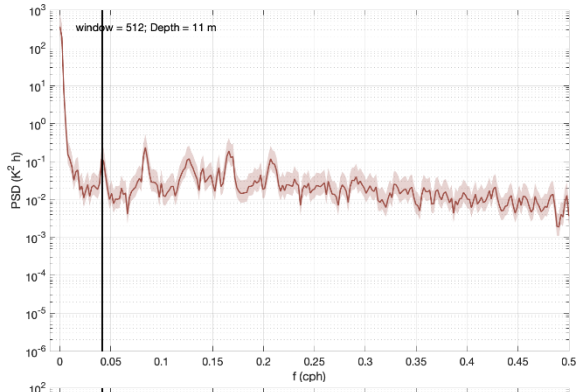
The copyright of individual parts of the supplement might differ from the CC BY 4.0 License.

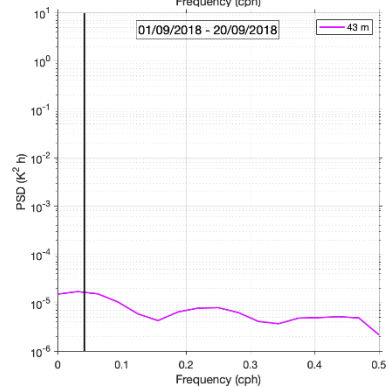
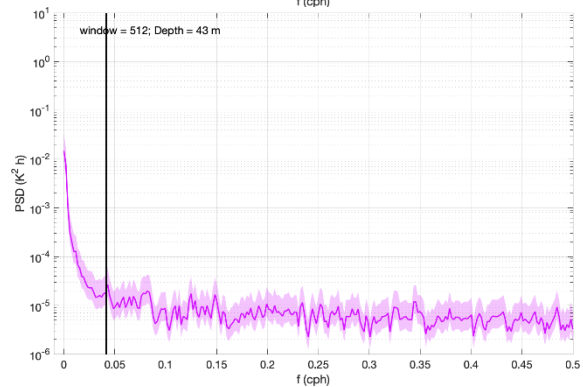
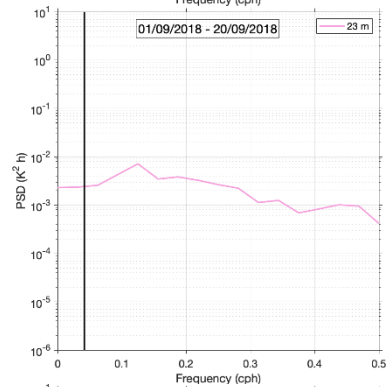
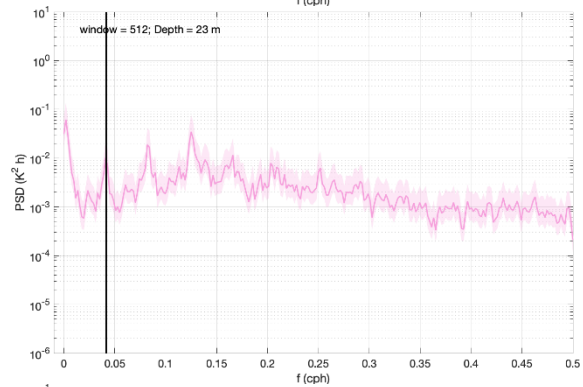
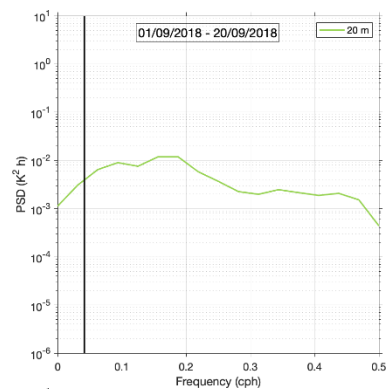
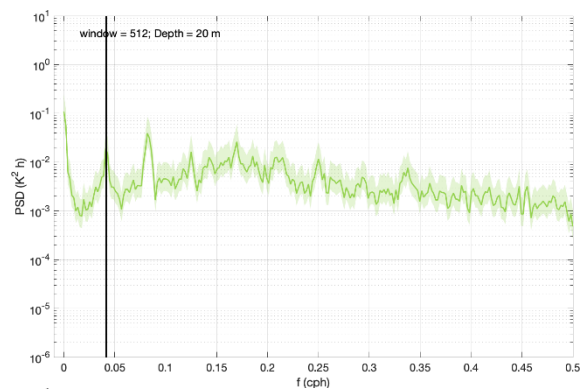
SUPPLEMENT 1

Power spectral densities computed from hourly mean lake temperatures measured at individual depths during 6 July – 5 November 2018 (left) and during 1 – 20 September (right), where the latter correspond to weaker winds. Corresponding window lengths are 512 and 32, respectively. Black vertical line shows 24 h period.









SUPPLEMENT 2

Power spectral densities computed from 2-min mean lake temperatures measured at various depths during 6 July – 5 November 2018.

