

Supplement of Hydrol. Earth Syst. Sci., 24, 2399–2418, 2020
<https://doi.org/10.5194/hess-24-2399-2020-supplement>
© Author(s) 2020. This work is distributed under
the Creative Commons Attribution 4.0 License.



Supplement of

**A novel regional irrigation water productivity model coupling
irrigation- and drainage-driven soil hydrology and salinity dynamics
and shallow groundwater movement in arid regions in China**

Jingyuan Xue et al.

Correspondence to: Zailin Huo (huozl@cau.edu.cn)

The copyright of individual parts of the supplement might differ from the CC BY 4.0 License.

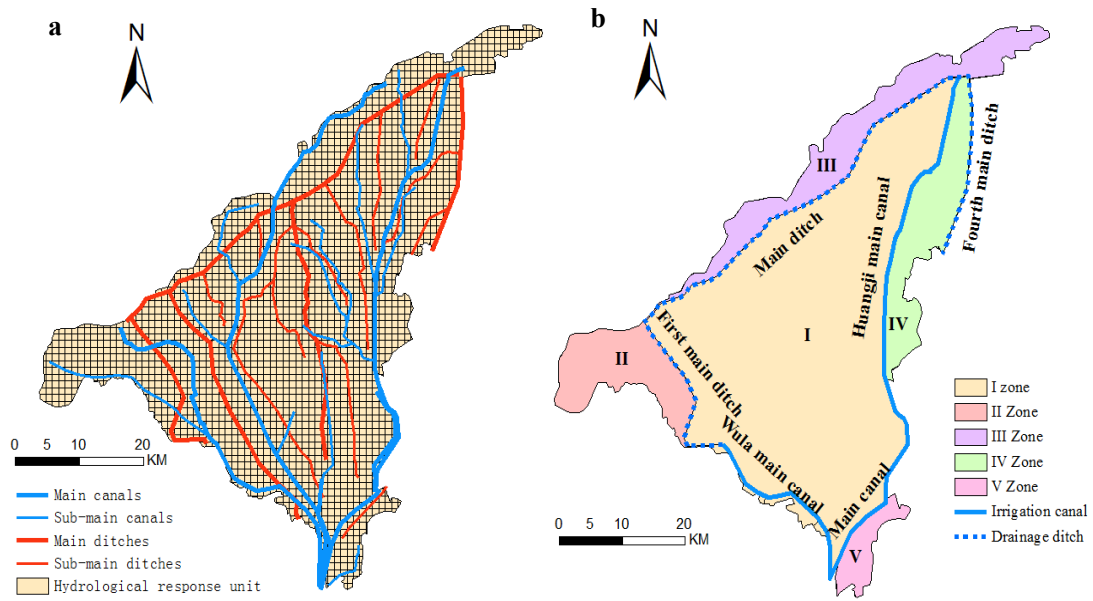


Fig.S1. The representation of (a) regional HRUs division and (b) groundwater boundary condition division.

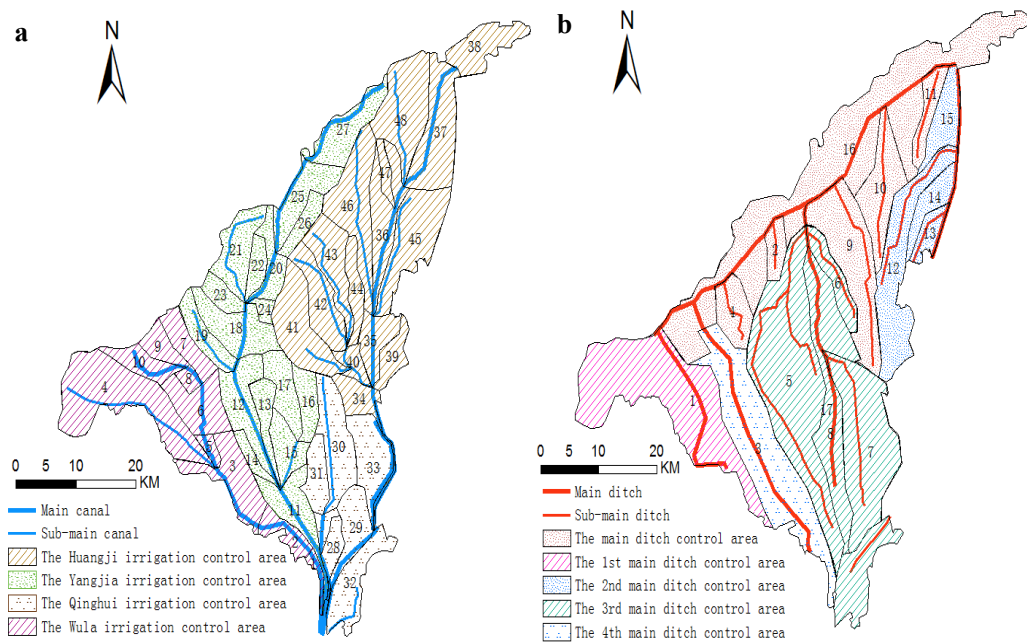
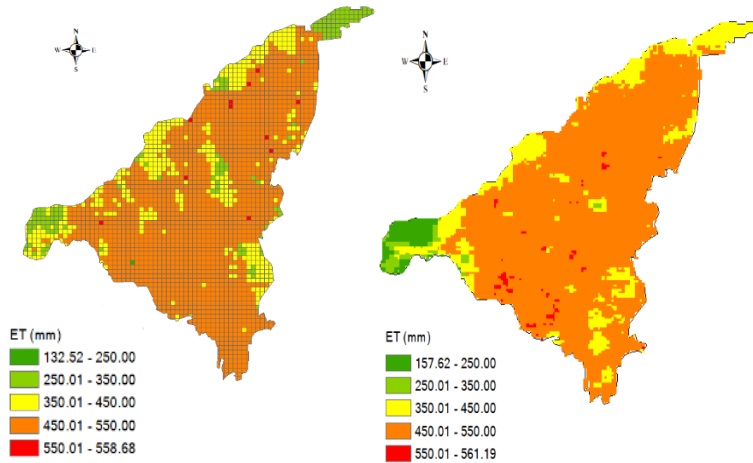
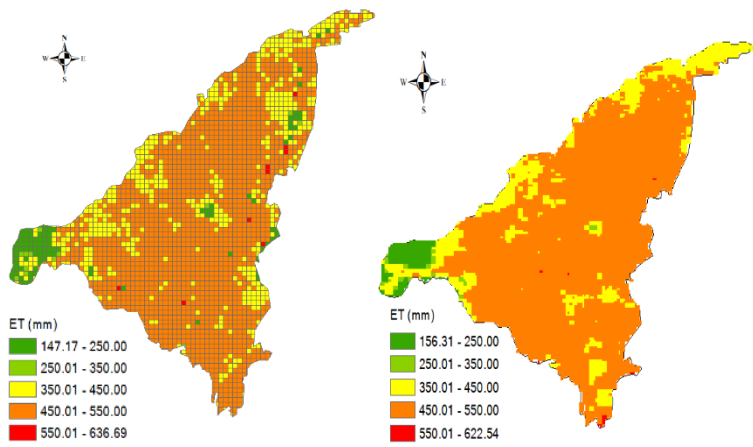


Fig.S2. Spatial distribution and their control zones of main and sub-main (a) canals and (b) drainage ditches.



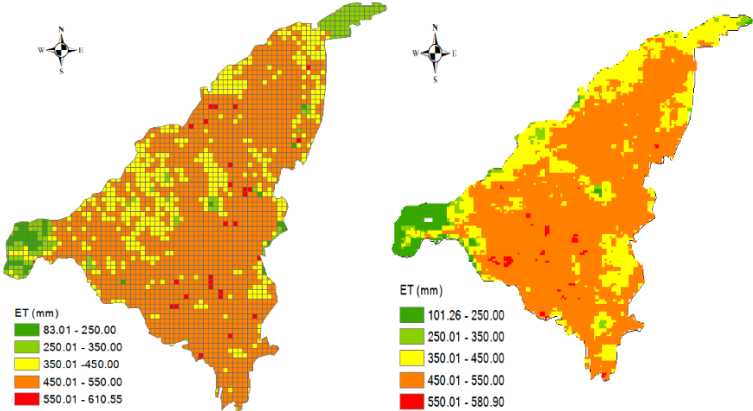
a- Simulated ET (2006)

b- Remote sensing ET (2006)



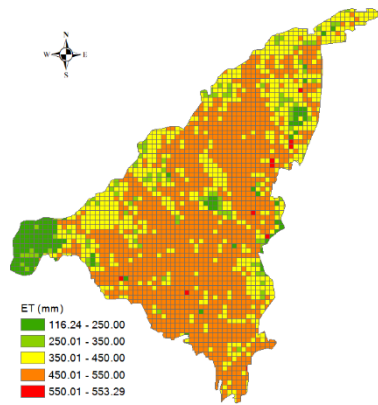
c- Simulated ET (2007)

d- Remote sensing ET (2007)

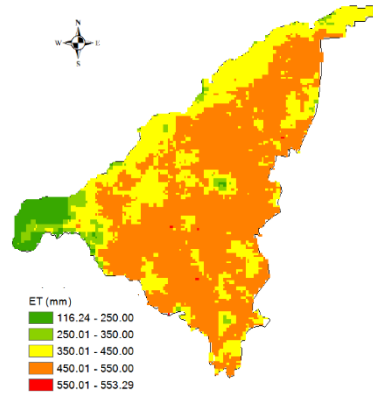


e- Simulated ET (2008)

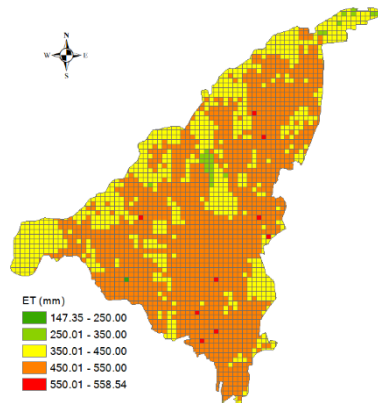
f- Remote sensing ET (2008)



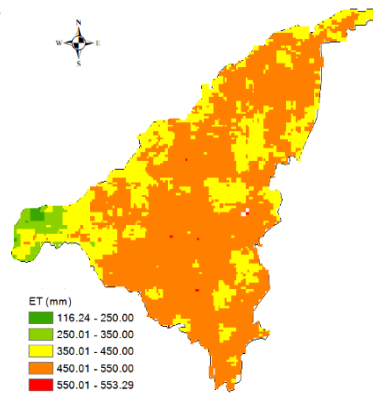
g- Simulated ET (2009)



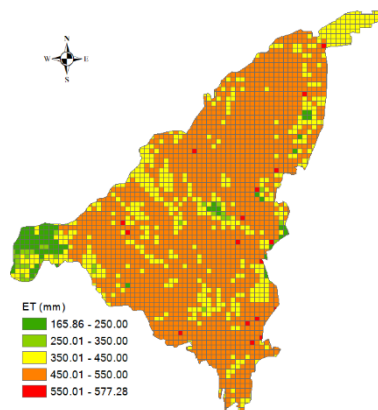
h- Remote sensing ET (2009)



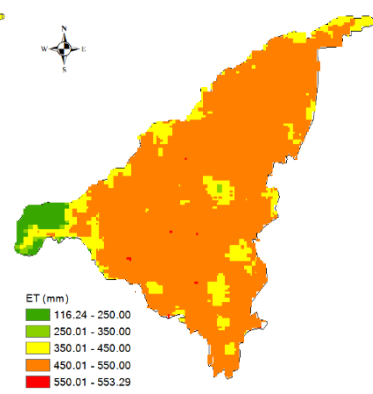
i- Simulated ET (2010)



j- Remote sensing ET (2010)



k- Simulated ET (2011)



l-Remote sensing ET (2011)

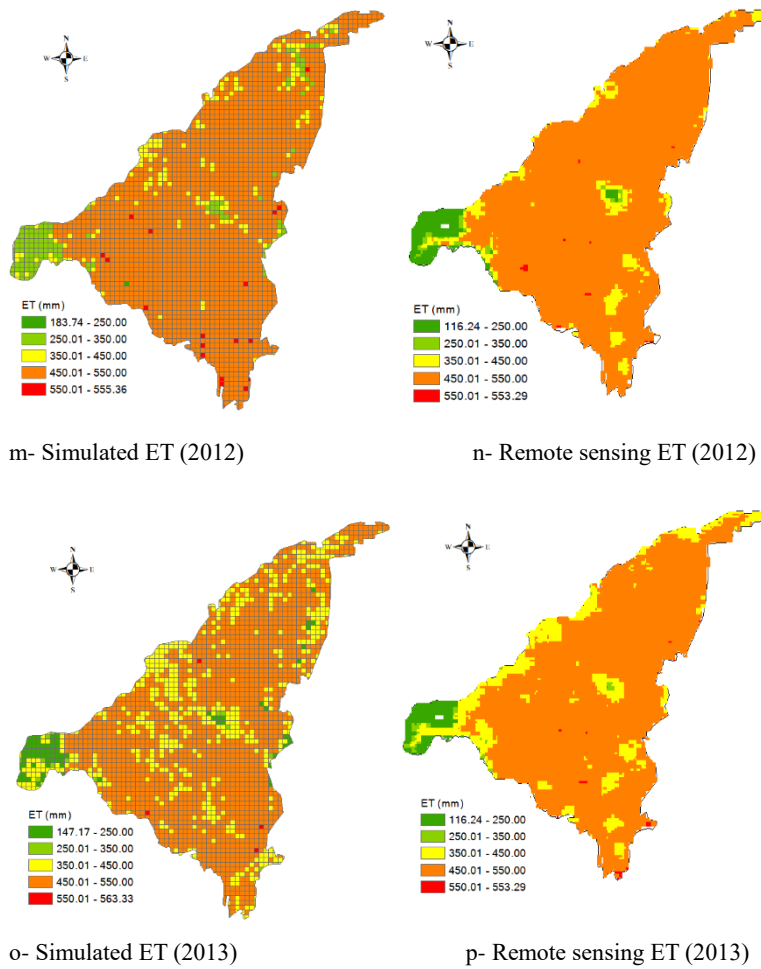


Fig.S3. Comparison of the simulated and remote sensing cumulative ET during the crop growing season in the years of 2006-2013.