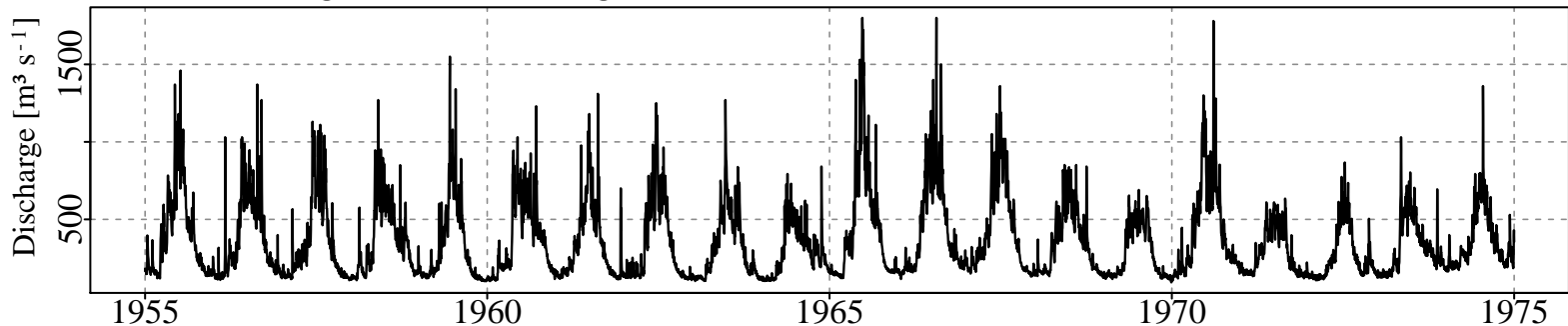
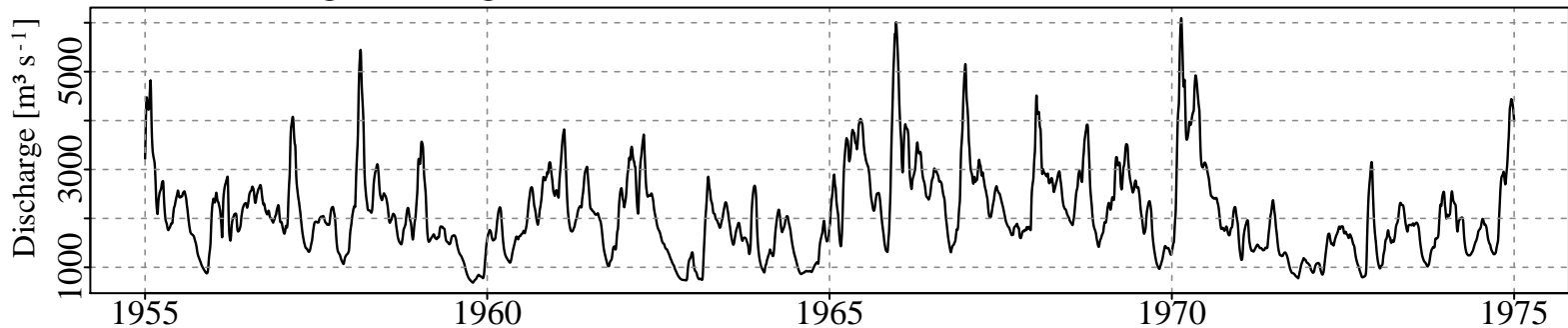


(a) Discharge Wasserburg

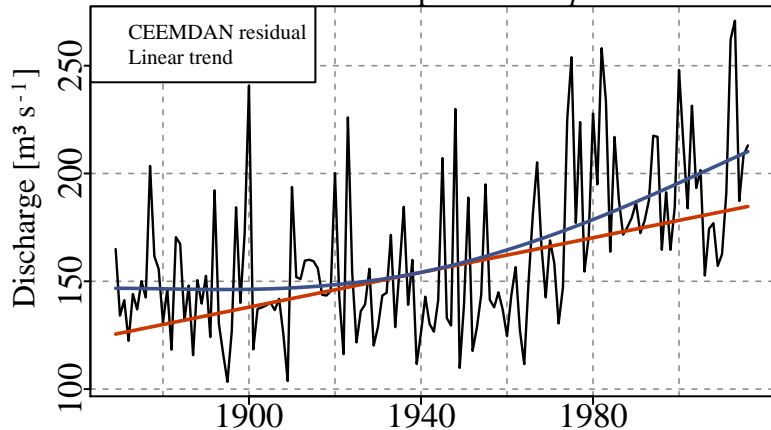


(b) Discharge Cologne



(c) Wasserburg 1 February

Linear trend: $4.03 \text{ m}^3 \text{ s}^{-1}$ per decade p -value: 0



(d) Cologne 1 June

Linear trend: $9.91 \text{ m}^3 \text{ s}^{-1}$ per decade p -value: 0.4411

