

Supplement of Hydrol. Earth Syst. Sci., 24, 1159–1170, 2020
<https://doi.org/10.5194/hess-24-1159-2020-supplement>
© Author(s) 2020. This work is distributed under
the Creative Commons Attribution 4.0 License.



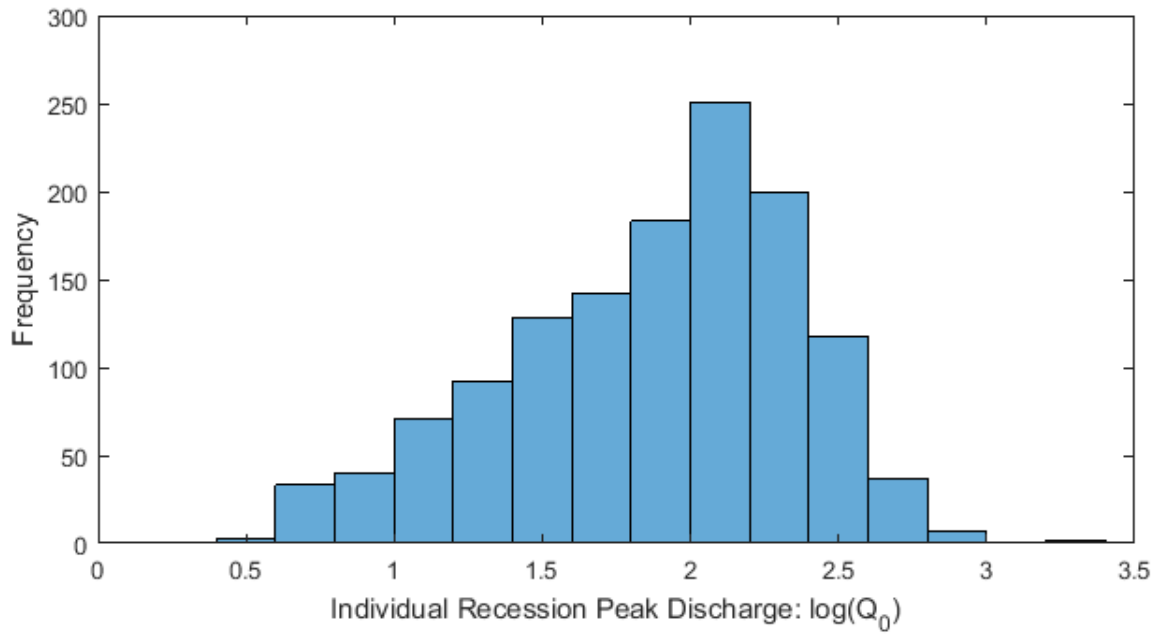
Supplement of

Recession analysis revisited: impacts of climate on parameter estimation

Elizabeth R. Jachens et al.

Correspondence to: Elizabeth R. Jachens (erjachens@gmail.com)

The copyright of individual parts of the supplement might differ from the CC BY 4.0 License.



Supplement Figure S1. The peak discharge for 1309 individual recession events for Lookout Creek is approximately lognormal.