



Supplement of

High-resolution regional climate modeling and projection over western Canada using a weather research forecasting model with a pseudo-global warming approach

Yanping Li et al.

Correspondence to: Yanping Li (yanping.li@usask.ca) and Zhenhua Li (zhenhua.li@usask.ca)

The copyright of individual parts of the supplement might differ from the CC BY 4.0 License.

Supplementary

10

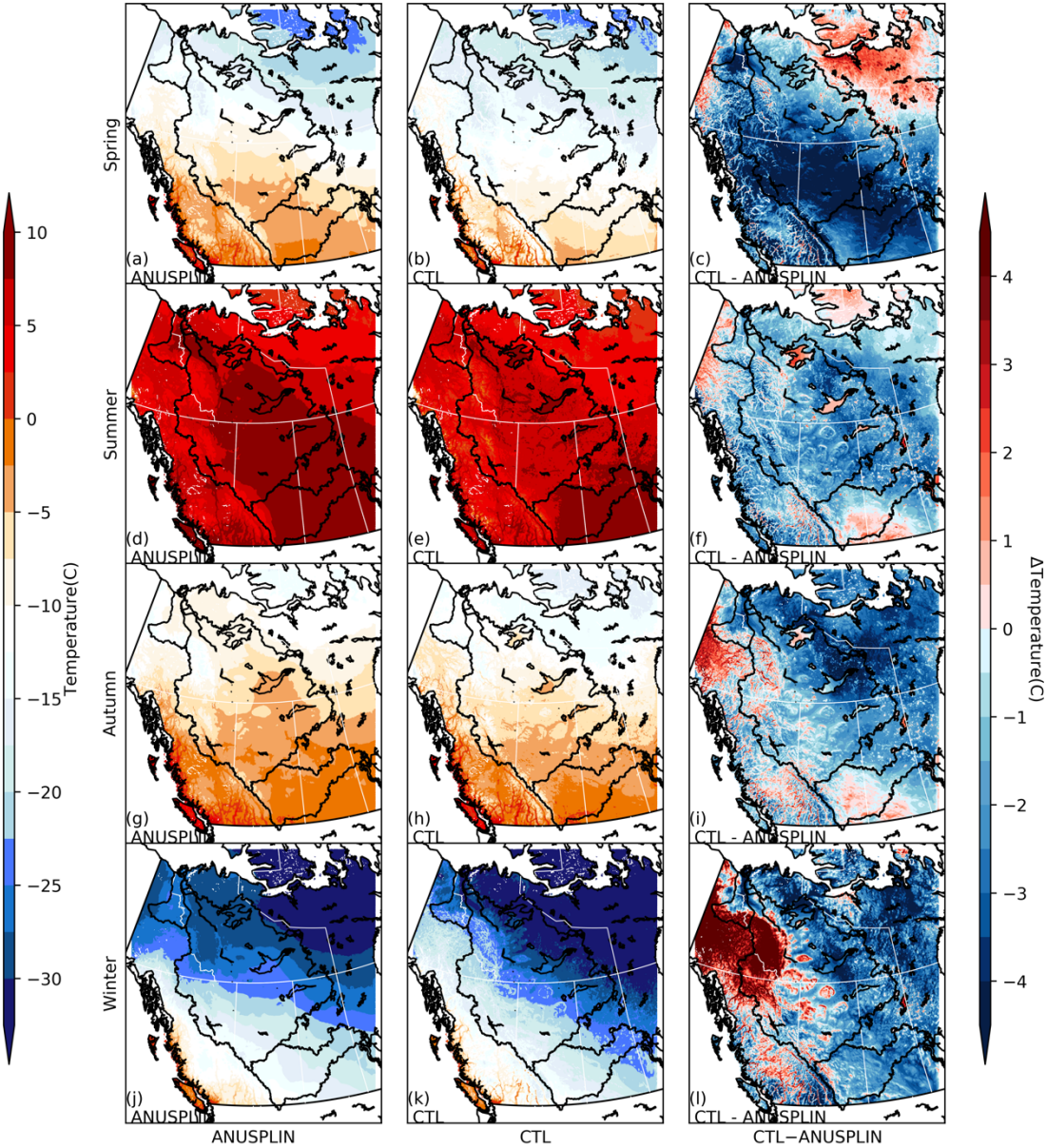


Figure S1: The seasonal averaged daily minimum temperature in spring (MAM, 1st row), summer (JJA, 2nd row), and autumn (SON, 3rd row), and winter (DJF, 4th row) from ANUSPLIN (left column) and WRF-CTL (middle column) and the difference (CTL - ANUSPLIN, right column).

15

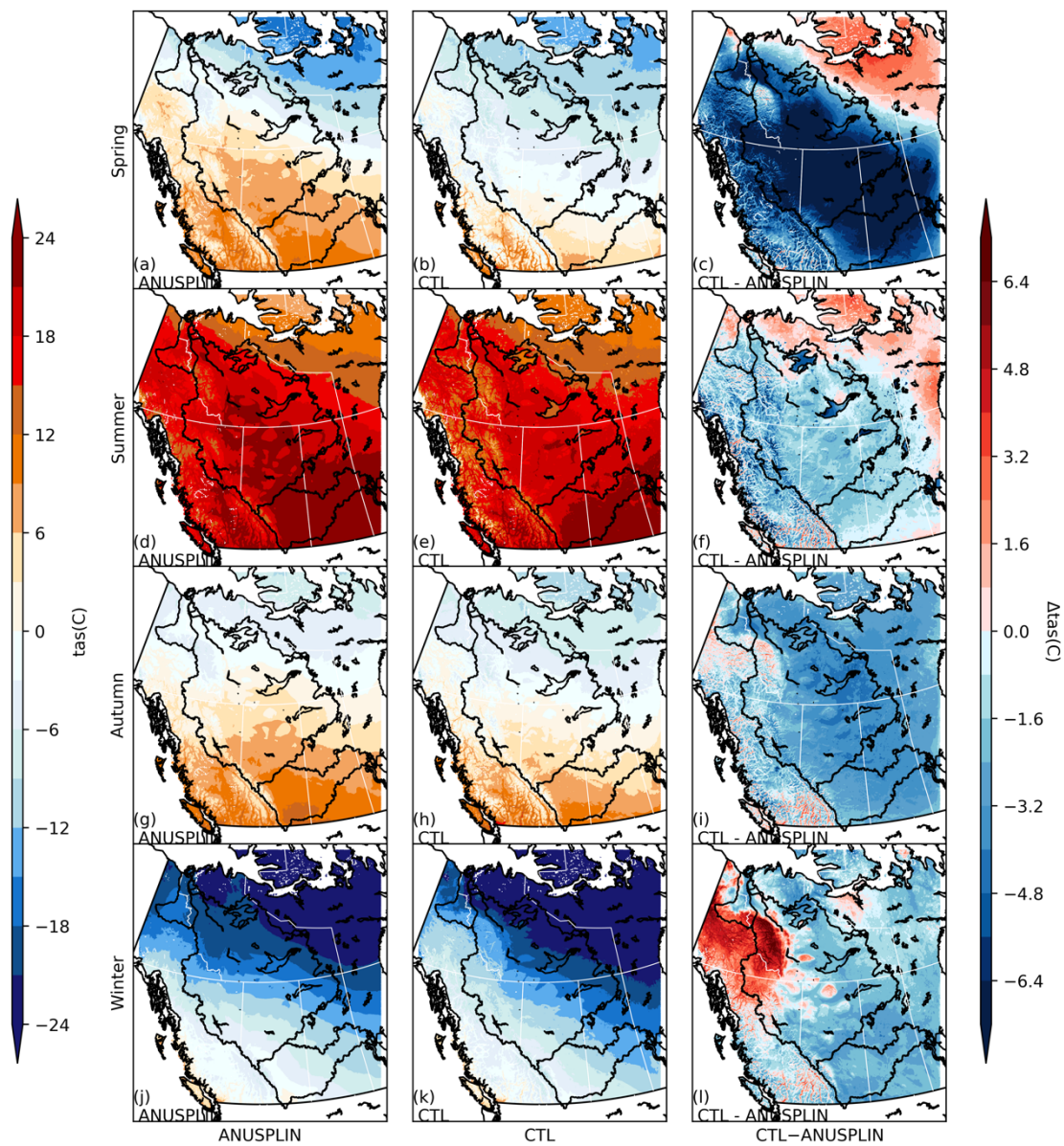


Figure S2: The seasonal averaged daily maximum temperature in spring (MAM, 1st row), summer (JJA, 2nd row), and autumn (SON, 3rd row), and winter (DJF, 4th row) from ANUSPLIN (left column) and WRF-CTL (middle column) and the difference (CTL - ANUSPLIN, right column)

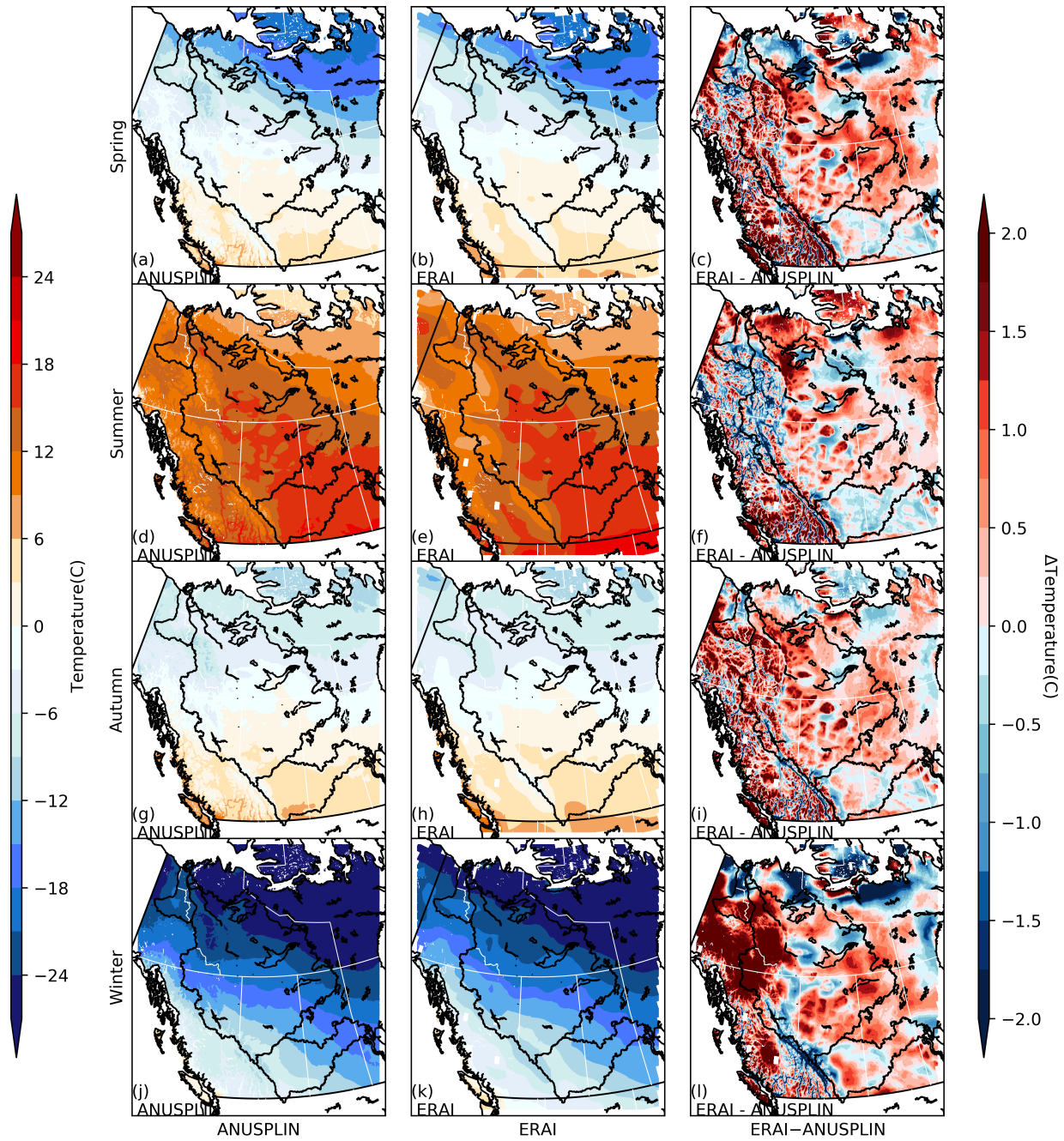


Figure S3: The seasonal averaged daily temperature in spring (MAM, 1st row), summer (JJA, 2nd row), and autumn (SON, 3rd row), and winter (DJF, 4th row) from ANUSPLIN (left column) and ERA-Interim (middle column) and the difference (ERAI - ANUSPLIN, right column)

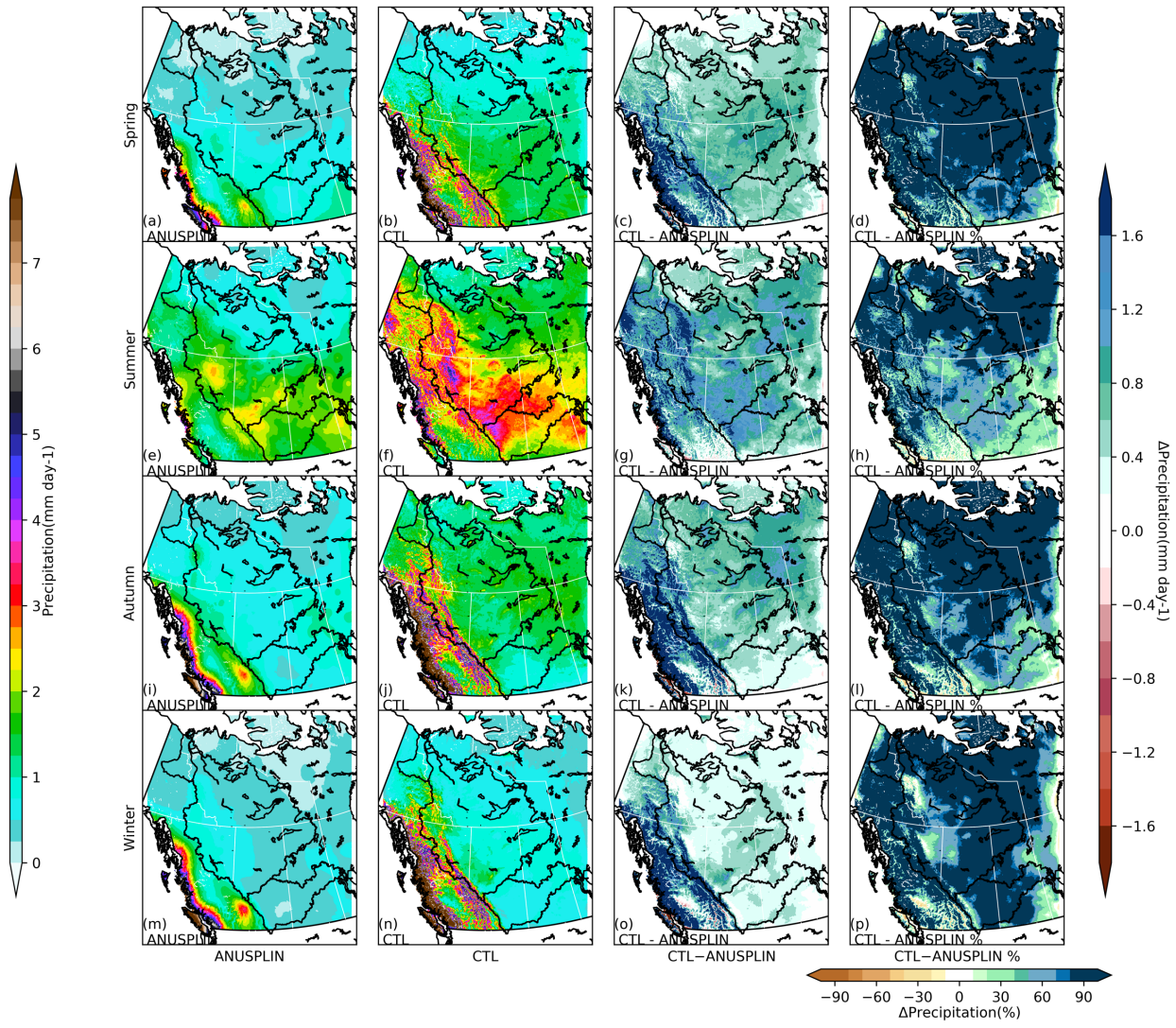


Figure S4: The daily mean precipitation in spring (MAM, 1st row), summer (JJA, 2nd row), and autumn (SON, 3rd row), and winter (DJF, 4th row) from ANUSPLIN (1st column) and WRF-CTL(2nd column), and their absolute (3rd column) and relative differences in percentage (4th column).

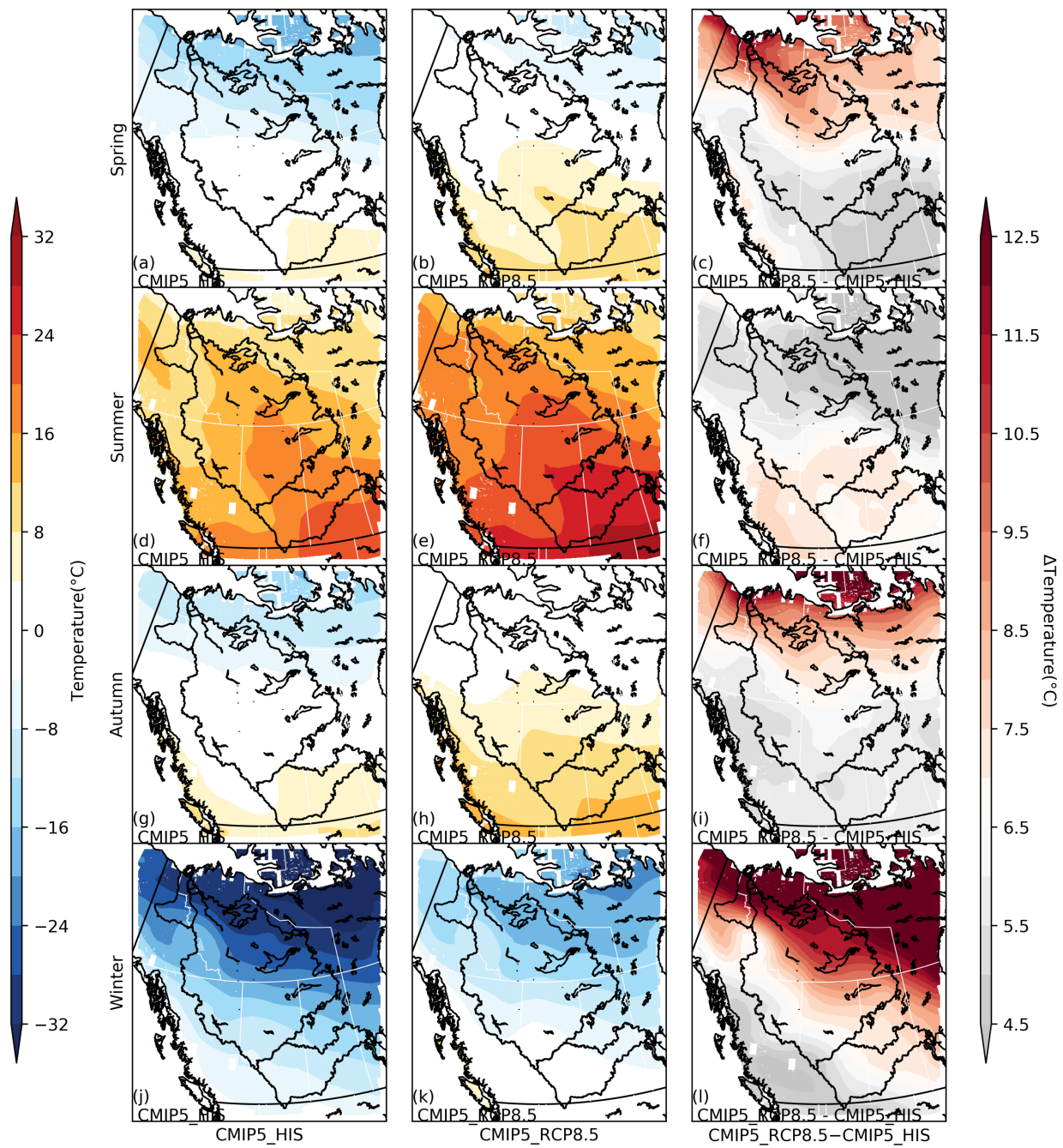


Figure S5: The daily mean temperature in spring (MAM, 1st row), summer (JJA, 2nd row), and autumn (SON, 3rd row), and winter (DJF, 4th row) from CMIP5 ensemble 1976-2005 (1st column), CMIP5 RCP8.5 ensemble 2071-2100 (2nd column) and the difference (CMIP5_RCP8.5- CMIP5_HIS, 3rd column).

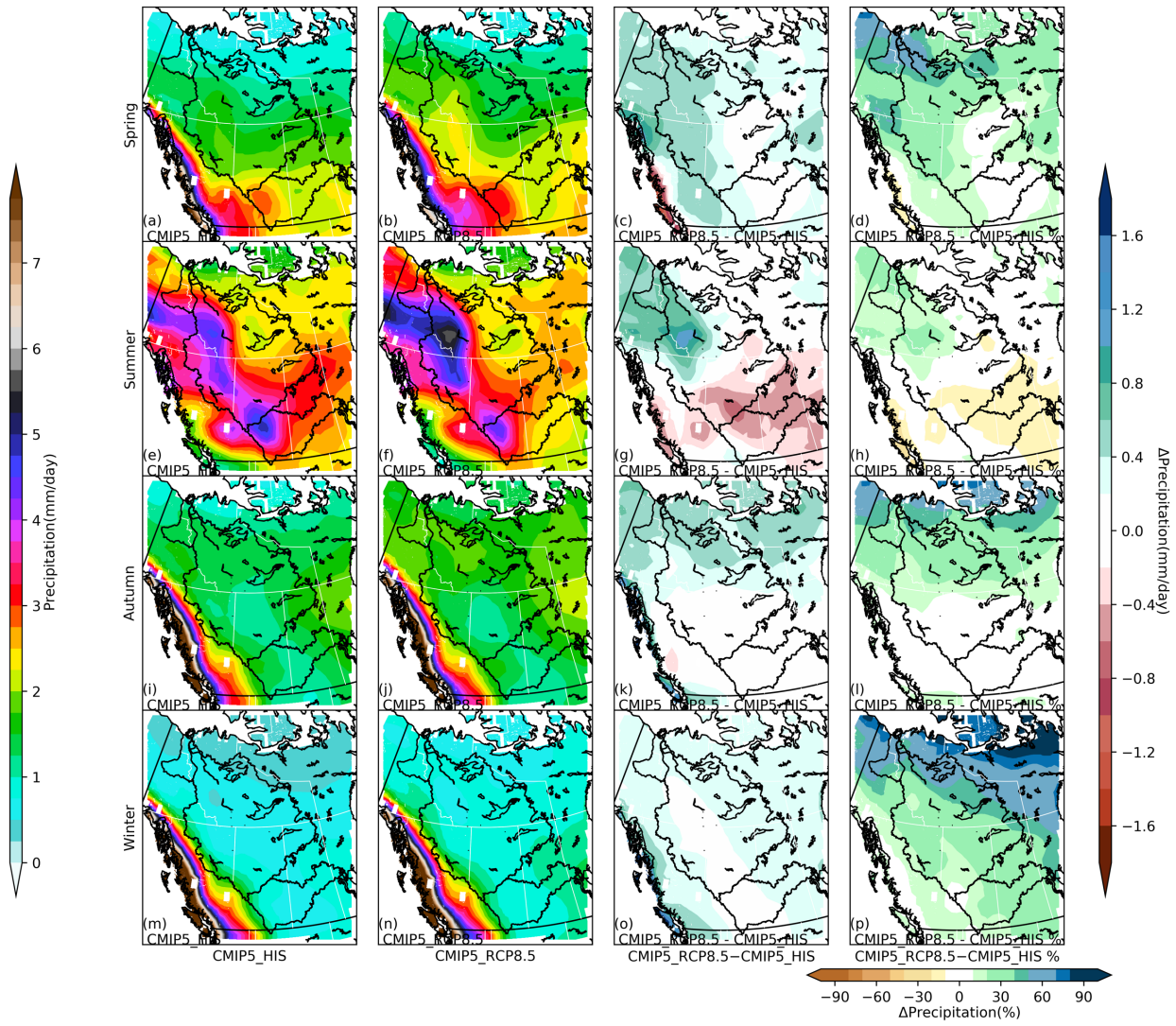


Figure S6: The daily mean precipitation in spring (MAM, 1st row), summer (JJA, 2nd row), and autumn (SON, 3rd row), and winter (DJF, 4th row) from CMIP5 ensemble 1976-2005 (1st column), CMIP5 RCP8.5 ensemble 2071-2100 (2nd column) and the difference (CMIP5_RCP8.5 - CMIP5_HIS, 3rd column) and percentage difference (4th column).