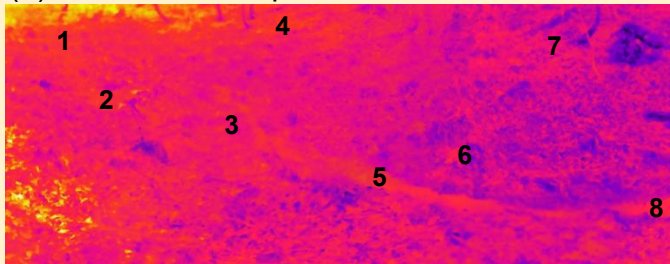


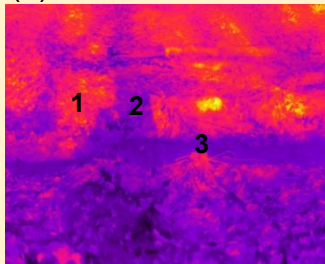
# Unfavourable acquisition circumstances

## (a) Insufficient temperature contrasts



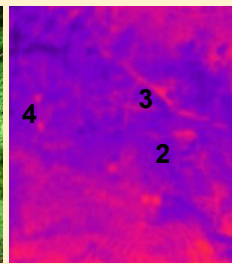
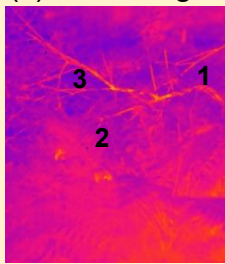
1, 2: Stream, very difficult to identify by temperature contrast 3: Dry soil with slightly different temperature to stream 4,7: Hillslope with very similar temperature to stream 5,8: Stream, clearly identifiable by temperature contrast 6: Hillock with two contrasting temperatures, left side similar to stream

## (b) Shadow cast



1: Sunlit stream bank 2: Shadowed stream bank 3: Sunlit stream

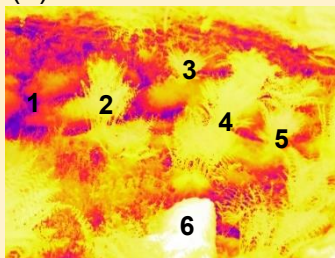
## (c) Rain / fog



First image, no rain;

next image, 8 s later: rain

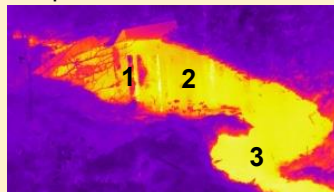
## (d) View obstructions



1: Uncovered stream 2-5: Fern covering the stream temporarily during the growing season 6: Tree trunk permanently covering soil behind it

## (e) Additional effects to consider

such as reflection, image vignetting, unrealistic temperatures, automatic recalibration of the camera



1: Reflections visible in TIR 2: Reflections not visible in TIR 3: No strong reflections