

Supplement of Hydrol. Earth Syst. Sci., 22, 4155–4163, 2018
<https://doi.org/10.5194/hess-22-4155-2018-supplement>
© Author(s) 2018. This work is distributed under
the Creative Commons Attribution 4.0 License.



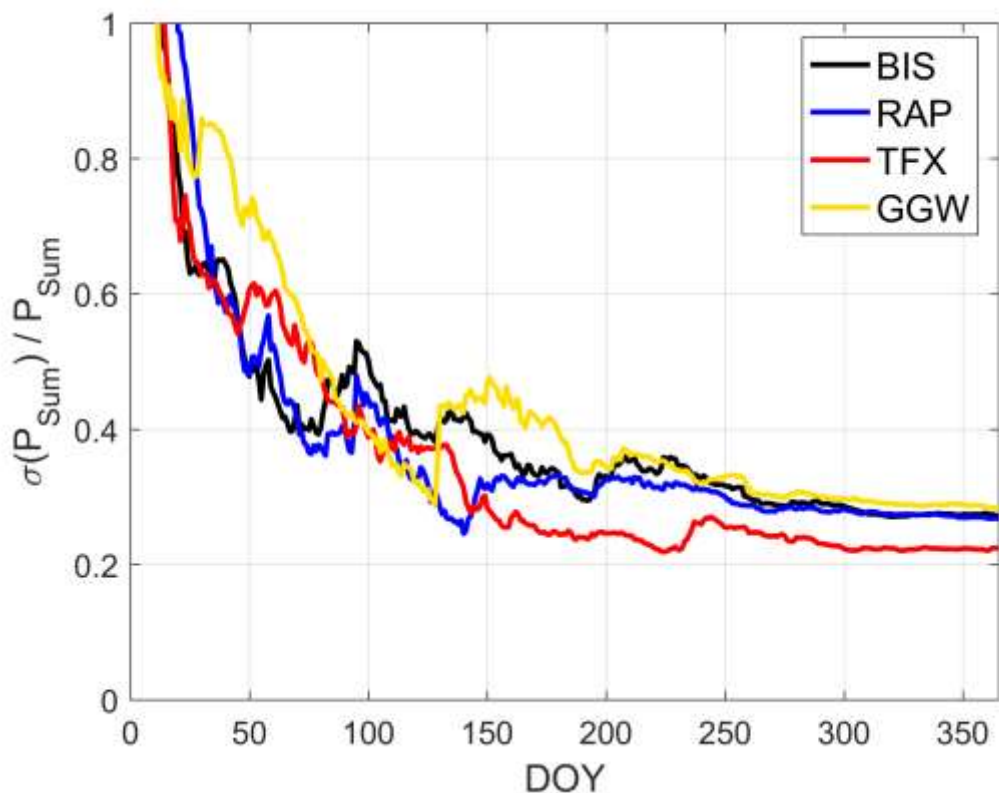
Supplement of

Convective suppression before and during the United States Northern Great Plains flash drought of 2017

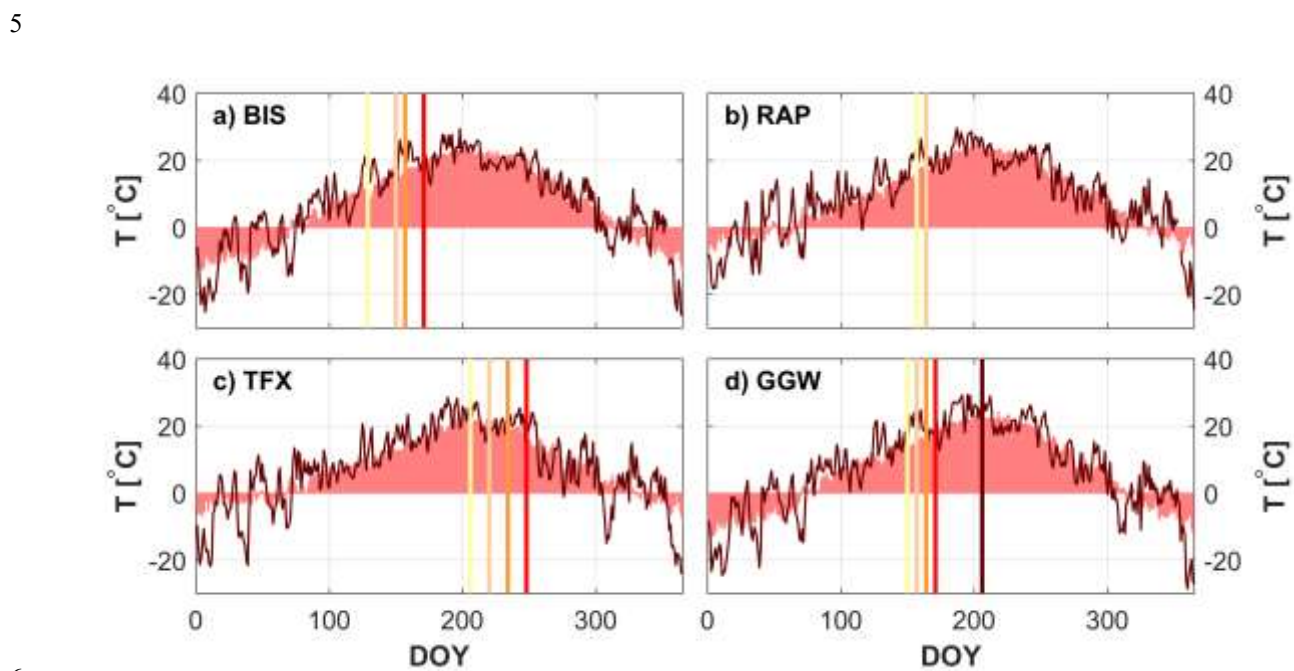
Tobias Gerken et al.

Correspondence to: Tobias Gerken (tobias.gerken@montana.edu)

The copyright of individual parts of the supplement might differ from the CC BY 4.0 License.

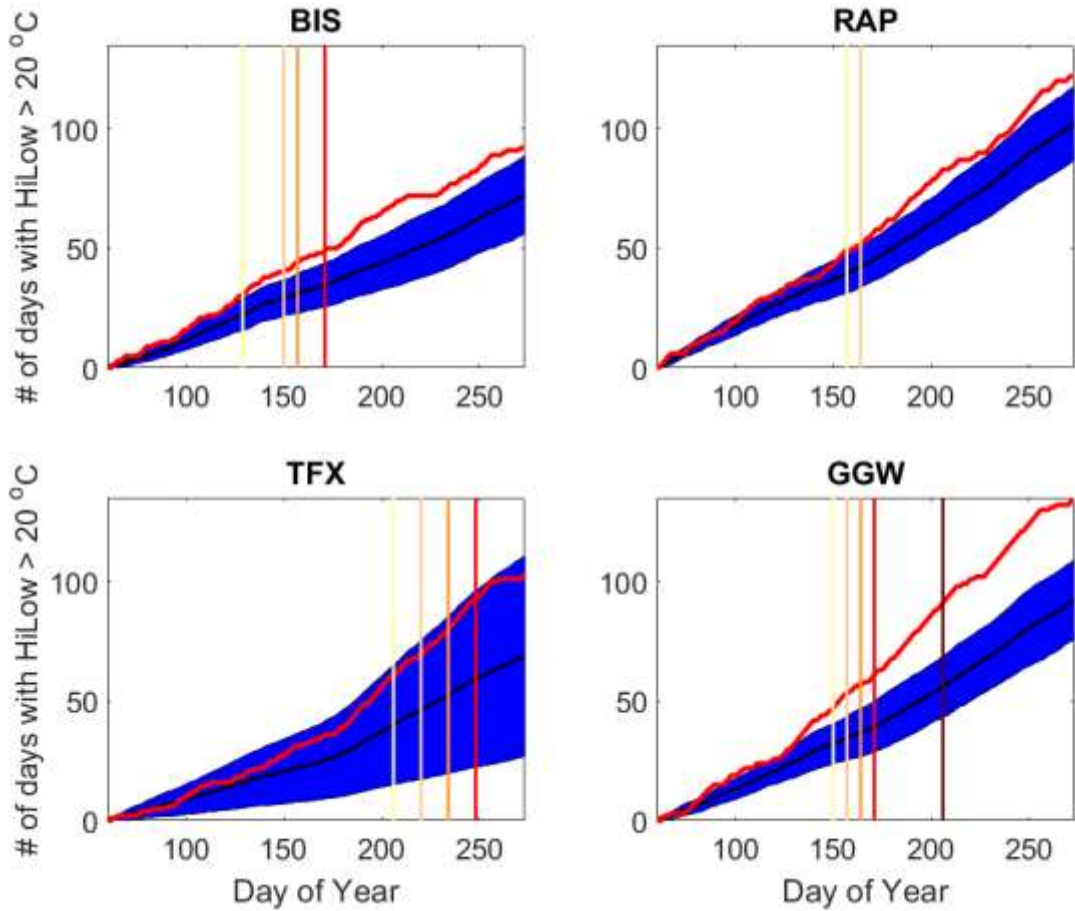


1
 2 **Figure S1.** Comparison of standard deviation of P-climatology compared to mean cumulative
 3 annual precipitation (1987-2016) for Bismarck, ND (BIS); Rapid City, SD (RAP); Great Falls,
 4 MT (TFX); and Glasgow, MT (GGW)



7 **Figure S2.** Air temperature for 2017 (dark red line) compared to 30-year average temperature
 8 (1987-2016, shaded area) for (a) Bismarck, ND; (b) Rapid City, SD; (c) Great Falls, MT; and (d)
 9 Glasgow, MT. Vertical lines indicate onset of drought (D0 – yellow to D4 – dark red).

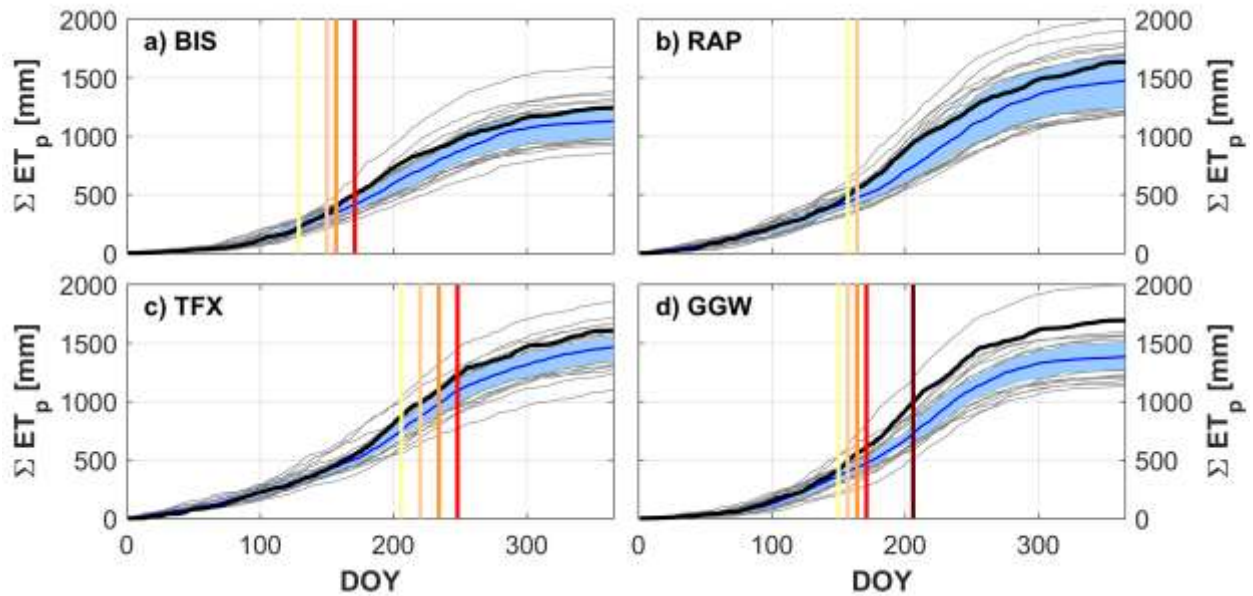
10



11

12 **Figure S3.** Comparison of cumulative number of days with $HI_{low} > 20\text{ }^{\circ}\text{C}$ for 2017 (red line) and
 13 the corresponding 1987-2016 climatology (black line) and its standard deviation (shaded area)
 14 for (a) Bismarck, ND (BIS); (b) Rapid City, SD (RAP); (c) Great Falls, MT (TFX); and (d)
 15 Glasgow, MT (GGW). Vertical lines indicate onset of drought (D0 – yellow to D4 – dark red).

16



17

18 **Figure S4.** Comparison of cumulative potential evapotranspiration (ET_p) estimated from the
 19 FAO Penman Monteith equation 2017 (black line), climatological interquartile range (shaded
 20 area), and individual years outside the interquartile range (grey lines) for (a) Bismarck, ND; (b)
 21 Rapid City, SD; (c) Great Falls, MT; and (d) Glasgow, MT. Vertical lines indicate onset of
 22 drought (D0 – yellow to D4 – dark red).