

Supplement of Hydrol. Earth Syst. Sci., 22, 3863–3882, 2018
<https://doi.org/10.5194/hess-22-3863-2018-supplement>
© Author(s) 2018. This work is distributed under
the Creative Commons Attribution 4.0 License.



Supplement of

Assimilation of river discharge in a land surface model to improve estimates of the continental water cycles

Fuxing Wang et al.

Correspondence to: Fuxing Wang (fuxing.wang@lmd.jussieu.fr)

The copyright of individual parts of the supplement might differ from the CC BY 4.0 License.

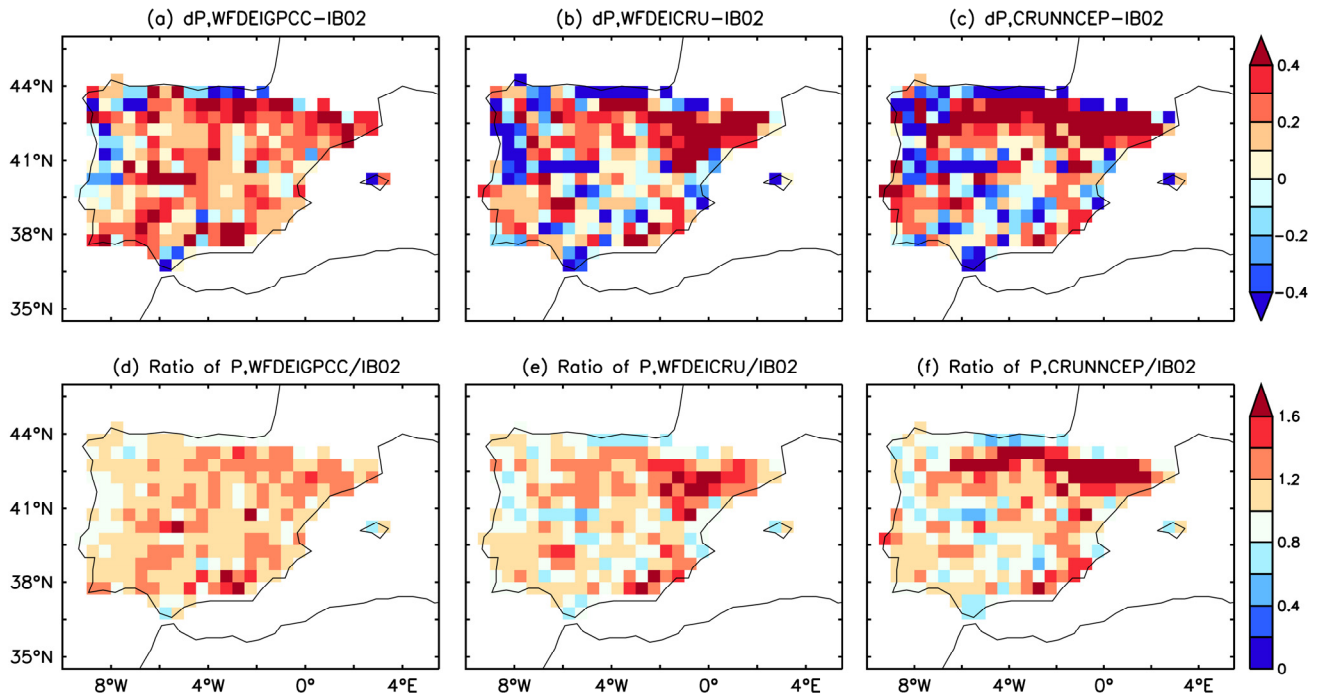


Figure S1. Comparison of precipitation (P , in mm/d) between IB02 and that used in the assimilation (a and d: WFDEI-GPCC; b and e: WFDEI-CRU; c and f: CRUNCEP) averaged from 1980 to 1989: 1st row for difference; 2nd row for ratio.