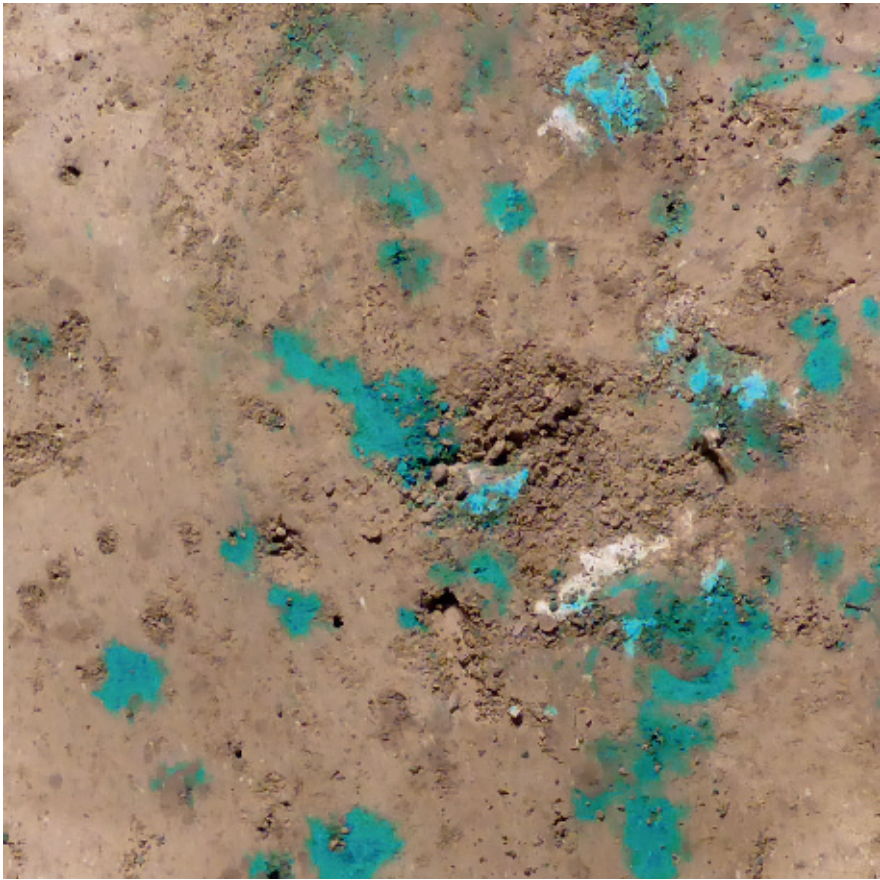
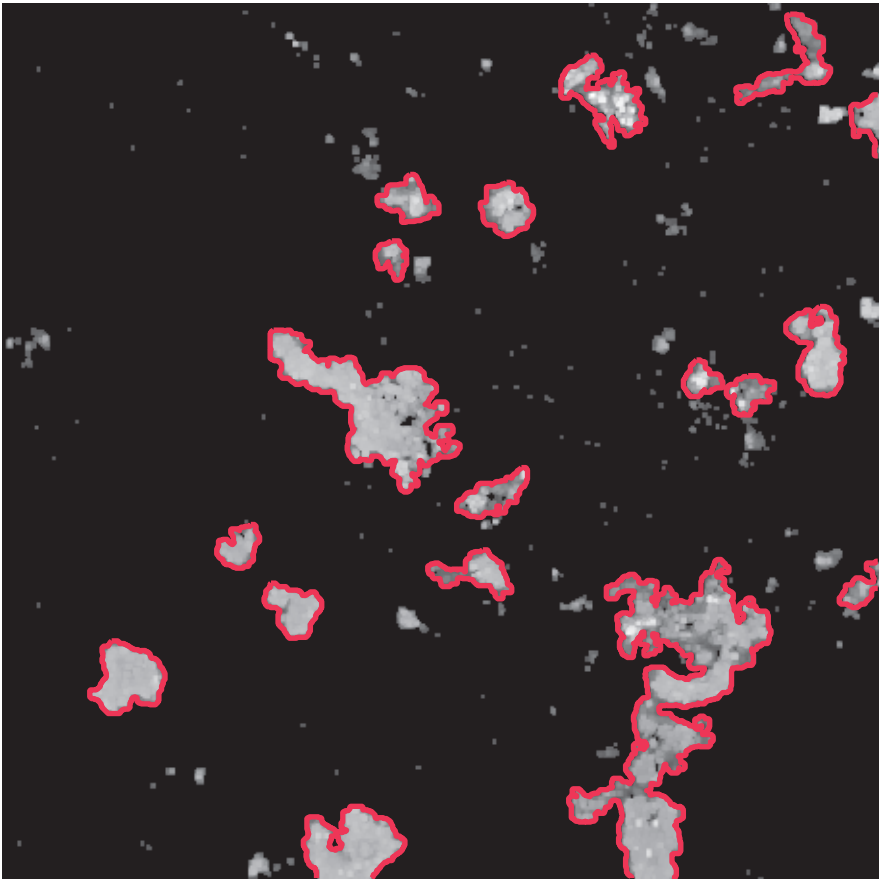


# Image processing

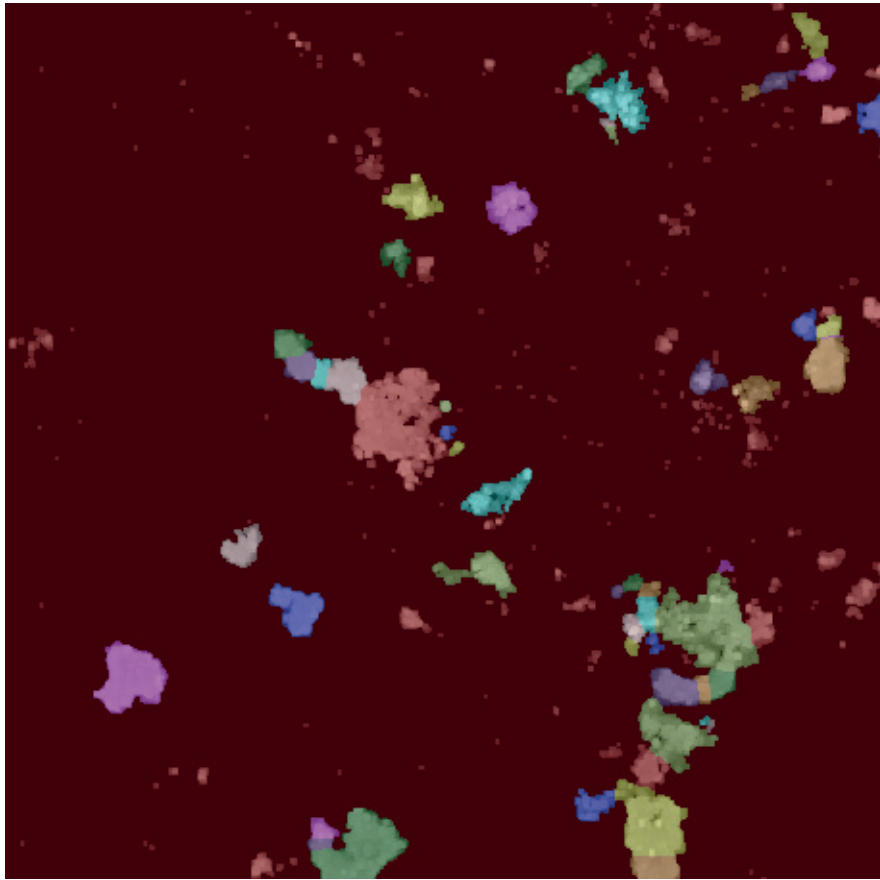
Rectified image of stained outcrop



Sobel-transformed difference  
green and blue spectrum in b/w  
Identified patches in red

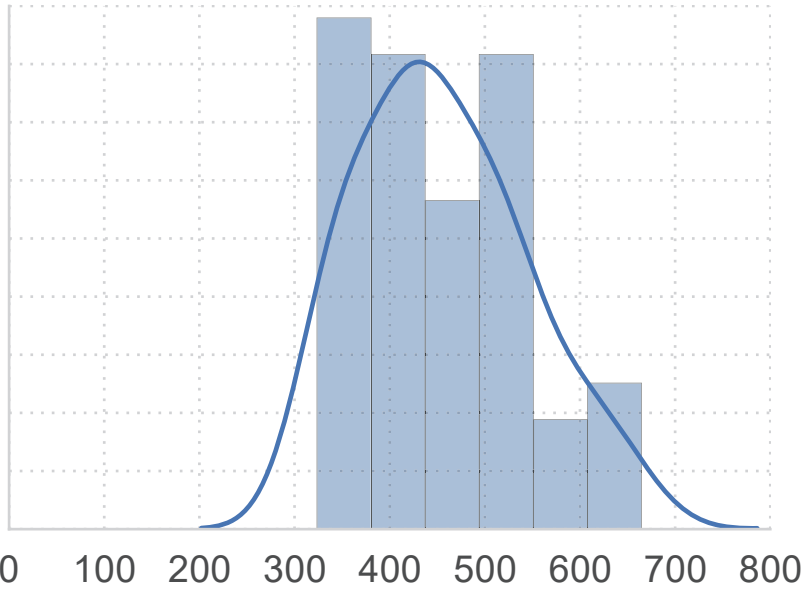


Broken and labelled patches

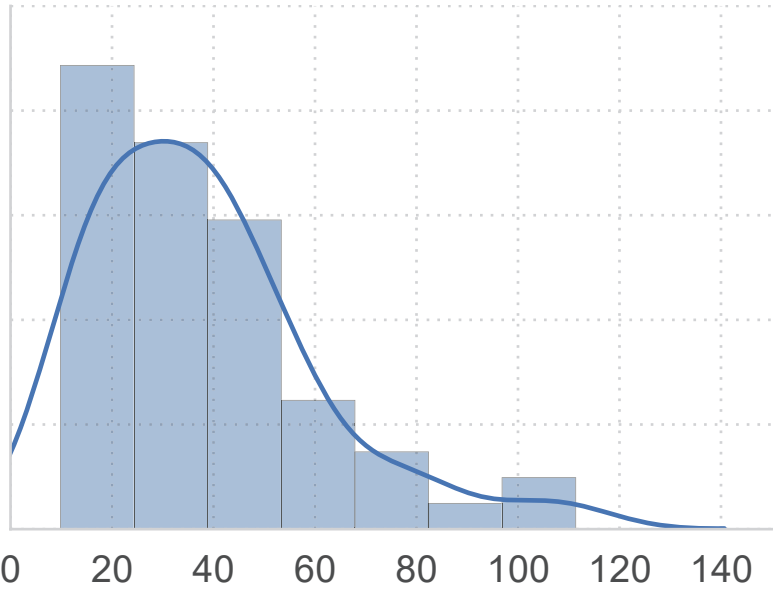


# Patch statistics

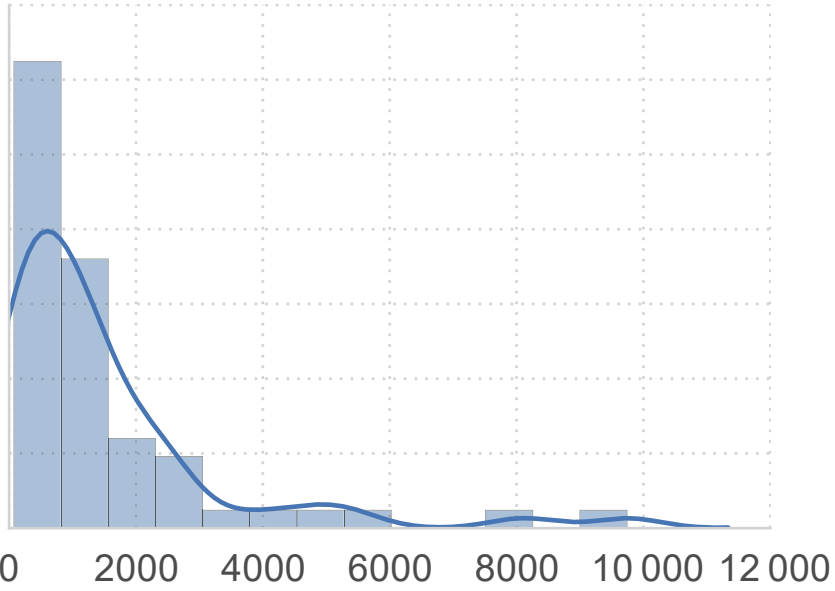
Mean distance between patches



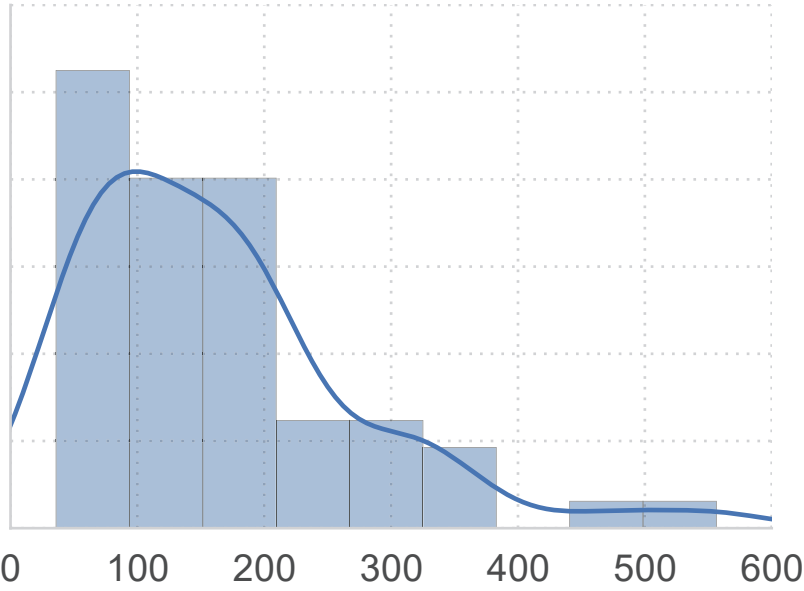
Patch diameter



Patch area



Patch perimeter



# Resampling from multiple layers

Resulting domain definition of  
representative macropores

