



Supplement of

Quantification of surface water volume changes in the Mackenzie Delta using satellite multi-mission data

Cassandra Normandin et al.

Correspondence to: Cassandra Normandin (cassandra.normandin@u-bordeaux.fr)

The copyright of individual parts of the supplement might differ from the CC BY 3.0 License.

Figure S1: Index map and associated histogram in July 2013 for (a) EVI for MODIS, (b) EVI for OLI 500, (c) LSWI for MODIS and (d) LSWI for OLI 500

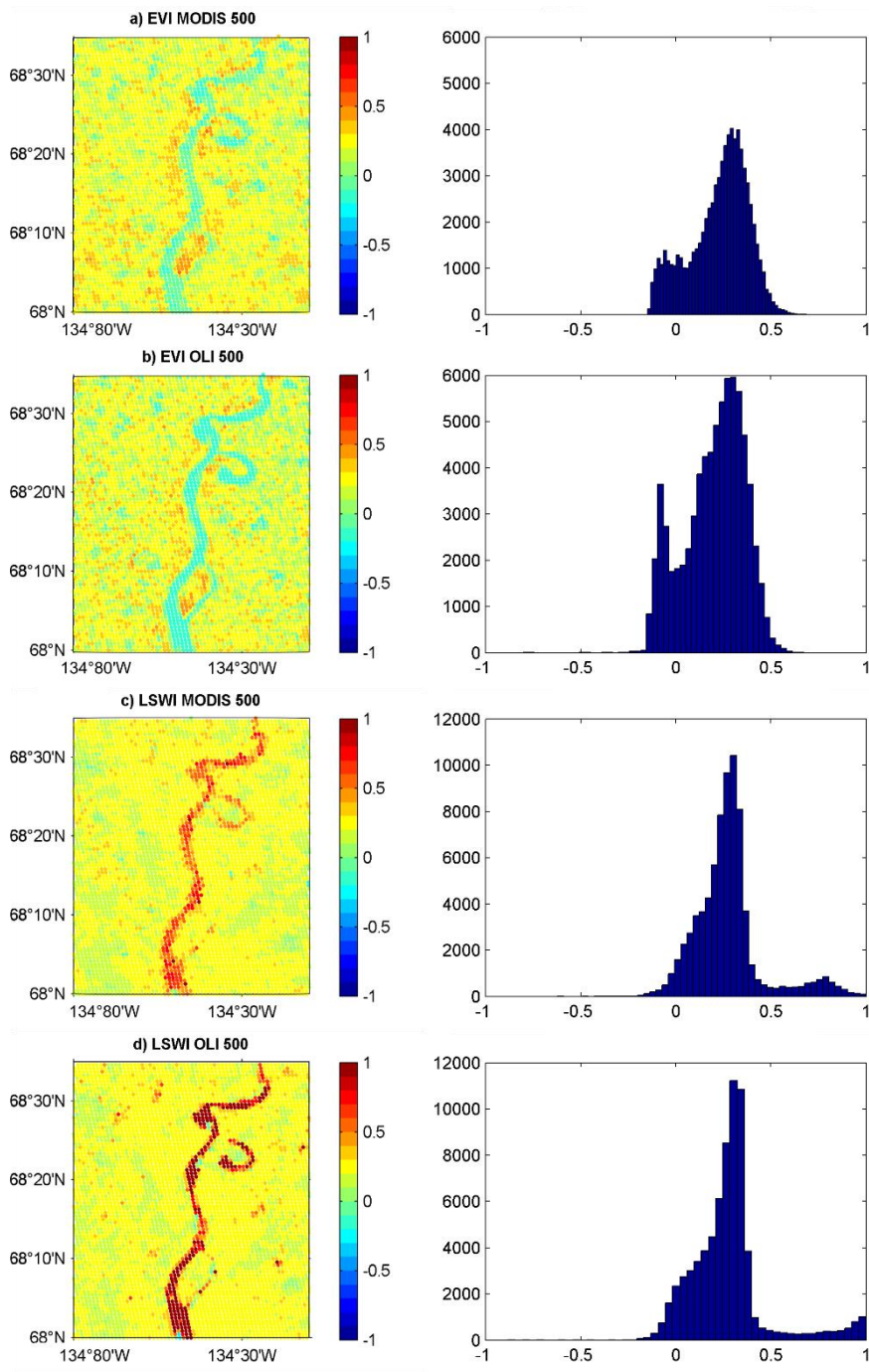


Figure S2: Map of difference between EVI and LSWI indices and associated histogram in July 2013 for (a) MODIS and (b) OLI 500

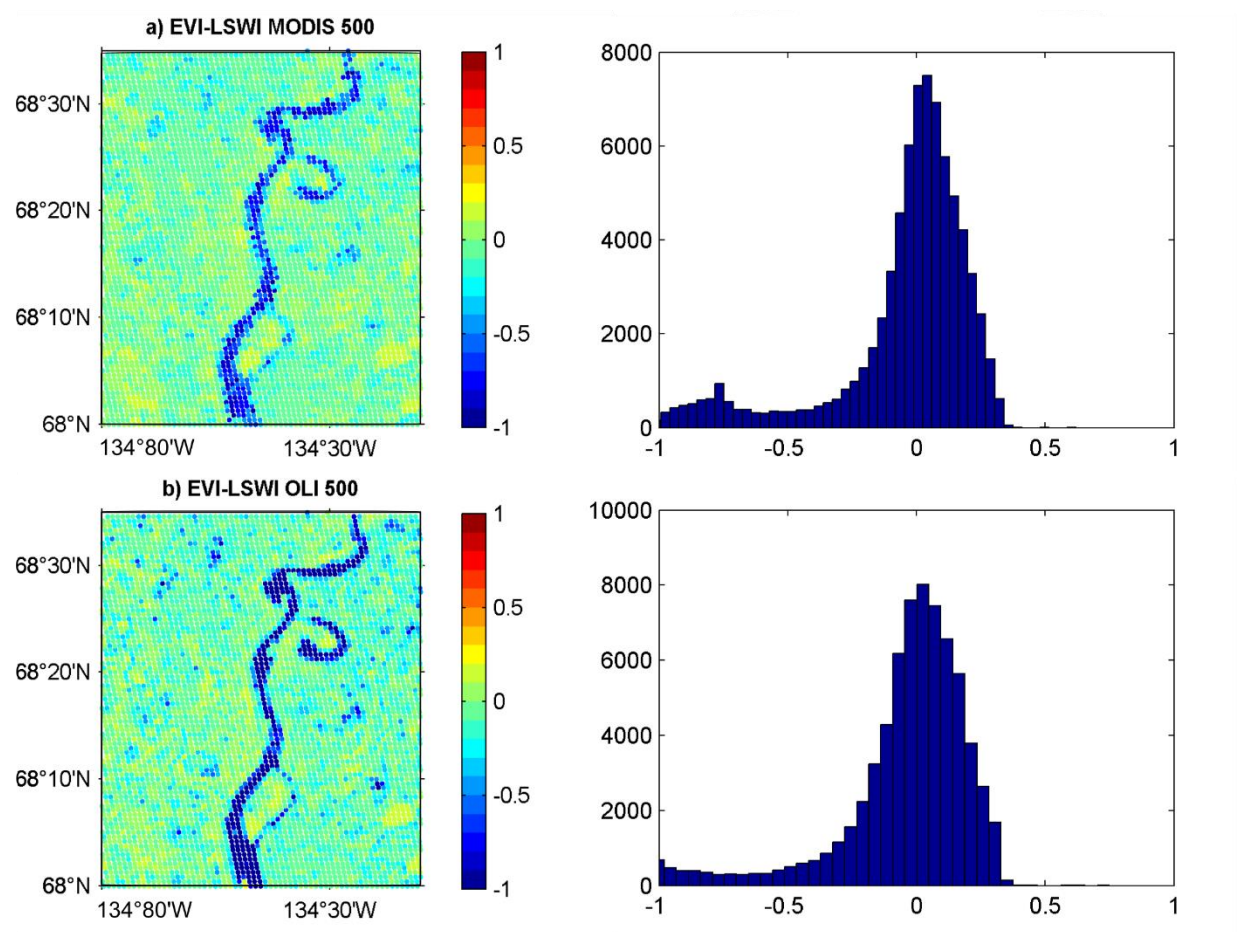


Figure S3: Surface water extent estimated in July 2013 using (a) MODIS at 500 m (b) OLI at 500 m and (c) OLI at 30 m. Permanent water bodies appear in blue and inundated areas in light blue.

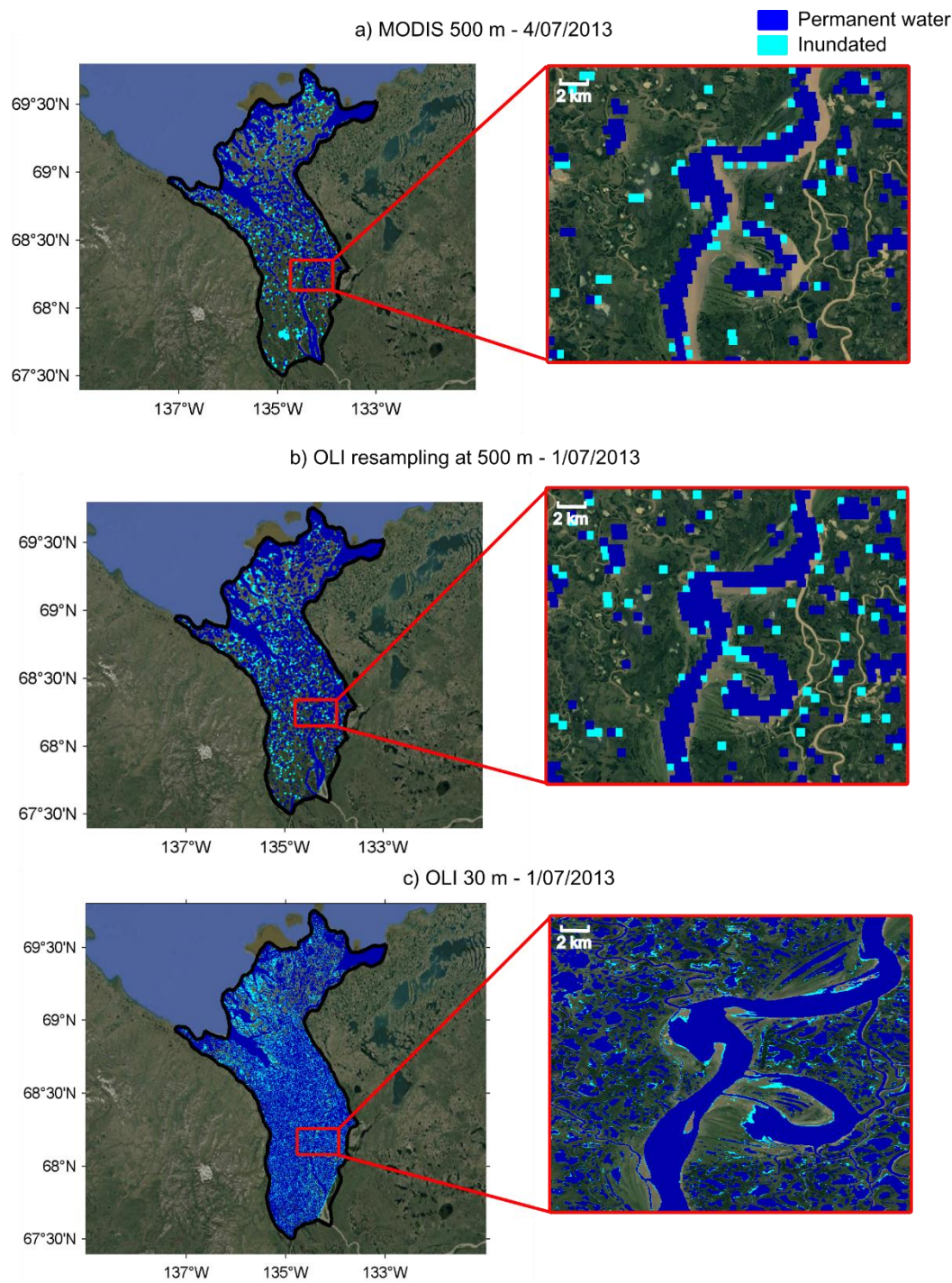


Figure S4: Comparisons of surface water areas detected using MODIS at 500 m and Landsat-8 images resampled at 500 m of spatial resolution for Landsat-8 images acquired on 04/07/2013 (a) and 05/08/2013 (b). Surface water only detected using MODIS, Landsat-8 resampled and detected by both appears in blue, light blue and yellow respectively.

