

Supplement of Hydrol. Earth Syst. Sci., 21, 791–804, 2017  
<http://www.hydrol-earth-syst-sci.net/21/791/2017/>  
doi:10.5194/hess-21-791-2017-supplement  
© Author(s) 2017. CC Attribution 3.0 License.



Hydrology and  
Earth System  
Sciences



*Supplement of*

## **Water scarcity under various socio-economic pathways and its potential effects on food production in the Yellow River basin**

**Yuanyuan Yin et al.**

*Correspondence to:* Qihong Tang (tangqh@igsnr.ac.cn)

The copyright of individual parts of the supplement might differ from the CC-BY 3.0 licence.

1 **Supplemental Methodology:**

2 **1. Bias correction methodology (Ho et al., 2012)**

3 The bias correction methodology corrects the simulated raw annual runoff using the differences  
4 in the mean and variability between observations and the simulations in 1971-2000. In the  
5 simplest case, where the variability in observations and simulations is assumed to be the same --  
6 the normal distribution, the annual runoff is simply shifted by the mean bias in the reference.

7 
$$R_{BC}(t) = R_{RAW}(t) + \left( \overline{R_{O,REF}} - \overline{R_{M,REF}} \right) \quad (\text{Equation 1})$$

8 Where  $R_{BC}(t)$  is the bias-corrected simulated runoff,  $R_{RAW}(t)$  is raw simulated runoff for  
9 future period,  $\overline{R_{O,REF}}$  is the mean of the observation in 1971-2000,  $\overline{R_{M,REF}}$  is the mean of the  
10 simulated runoff in 1971-2000.

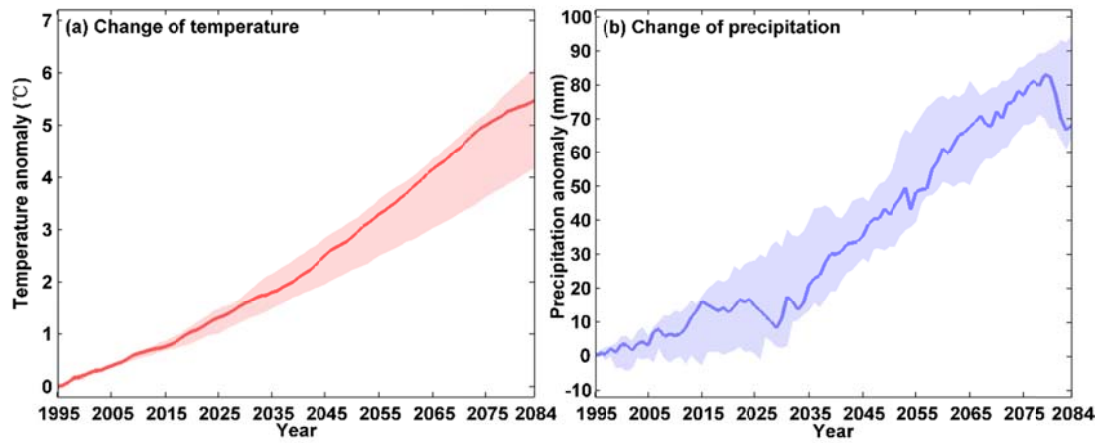
11 However, it is possible to apply a more general form of this bias-correction method that corrects  
12 not only the mean values but also the temporal variability of the model output in accordance with  
13 the observations (Ho et al., 2012),

14 
$$R_{BC}(t) = \overline{R_{O,REF}} + \frac{\sigma_{O,REF}}{\sigma_{T,REF}} \left( R_{RAW}(t) - \overline{R_{O,REF}} \right) \quad (\text{Equation 2})$$

15 Where  $\sigma_{T,REF}$  and  $\sigma_{O,REF}$  represent the standard deviation of the simulated runoff and  
16 observations in the reference period, respectively.

17

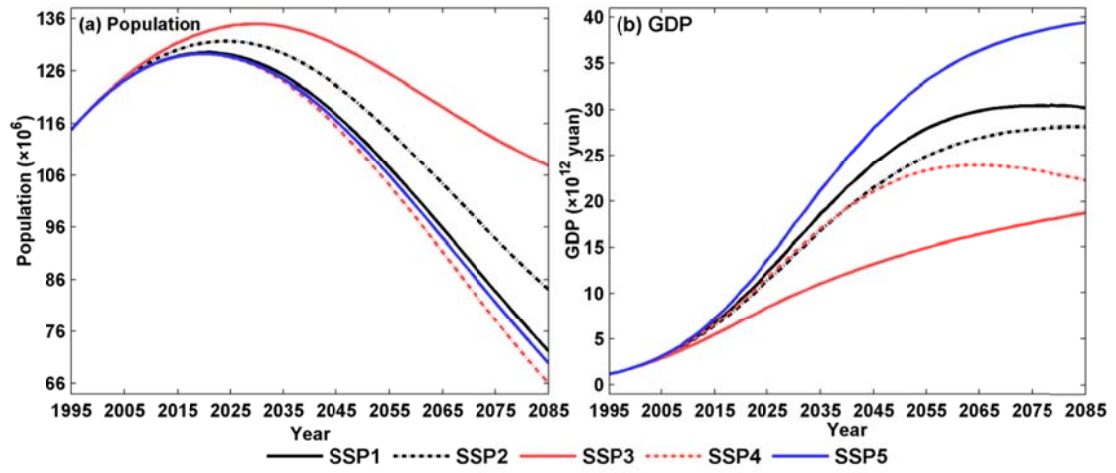
19 **Supplemental Figures:**



20

24 Figure S1 Change of (a) temperature and (b) precipitation from 1995-2084 with respect to  
25 1981-2010 in the YR basin under the RCP 8.5 emission scenario. The red (blue) shaded area  
26 denotes the interquartile range for the temperature (precipitation) anomaly and the solid line  
27 shows the median of the GCMs.

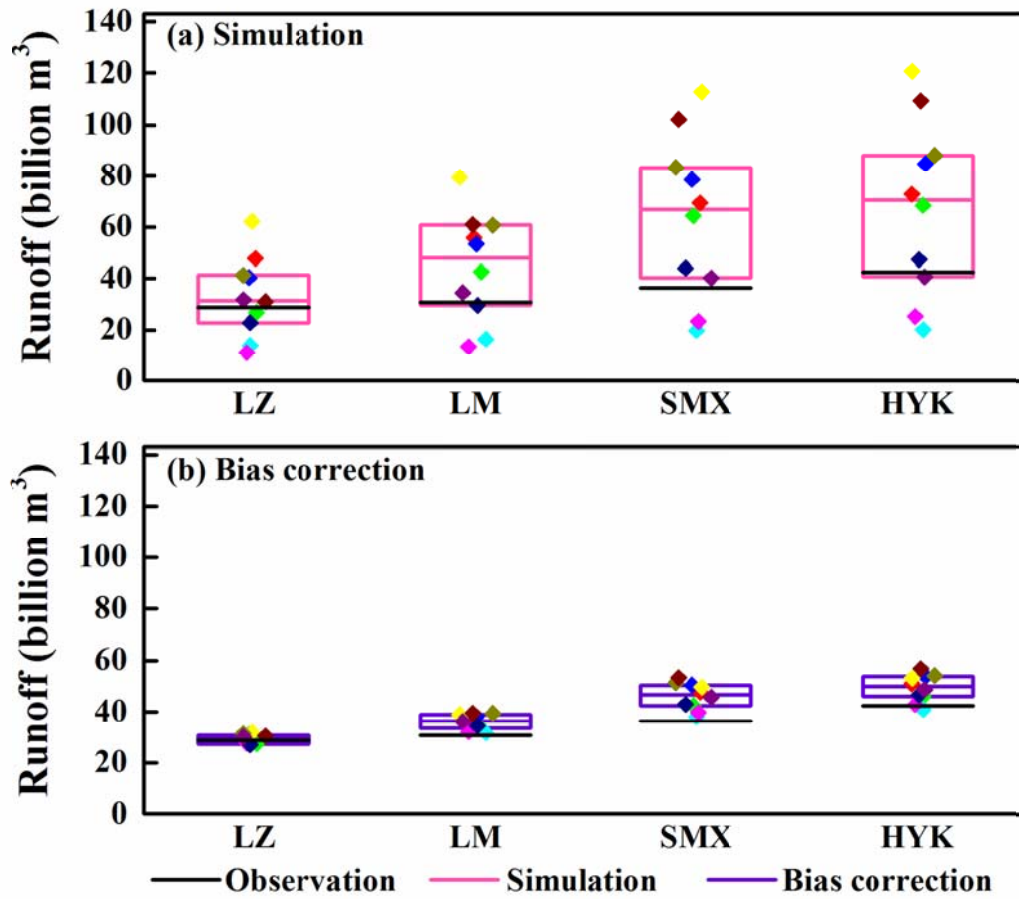
25



26

28 Figure S2 Population and gross domestic gross (GDP) from 1995-2085 in the YR basin under  
 29 SSP1, SSP2, SSP3, SSP4 and SSP5.

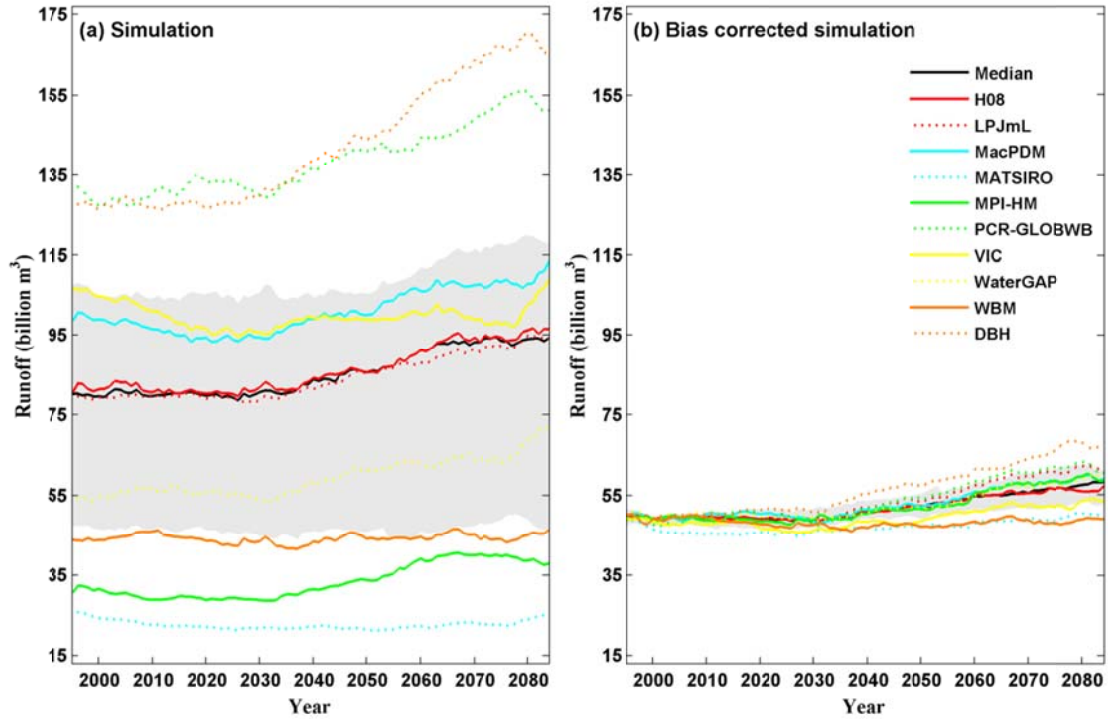
29



30

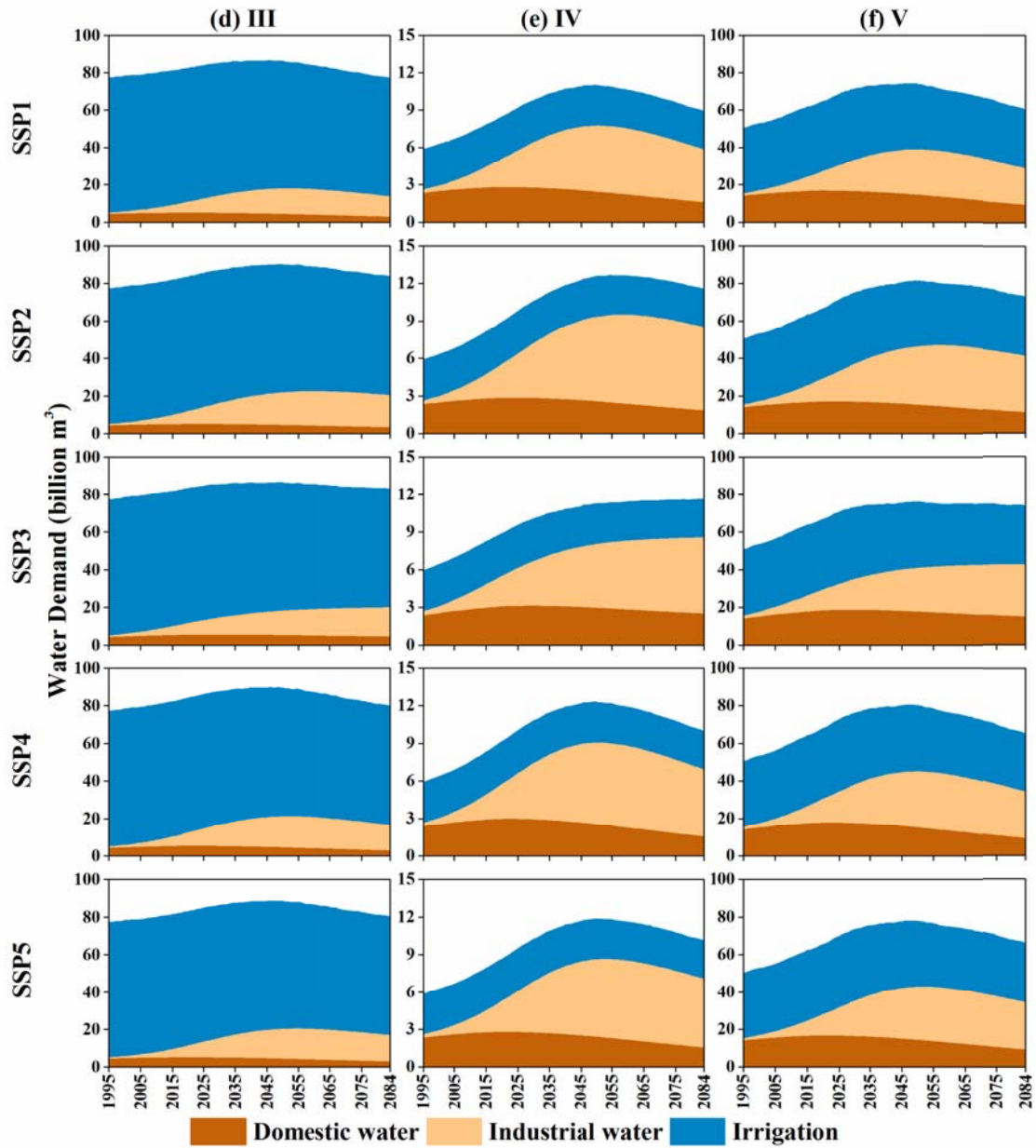
33 Figure S3 Comparison between observation and simulation and bias corrected simulation at four  
 34 runoff sites in the YL basin. LZ, LM, SMX, and HYK are short for Lanzhou, Longmen,  
 35 Sanmenxia, and Huayuankou, respectively.

34



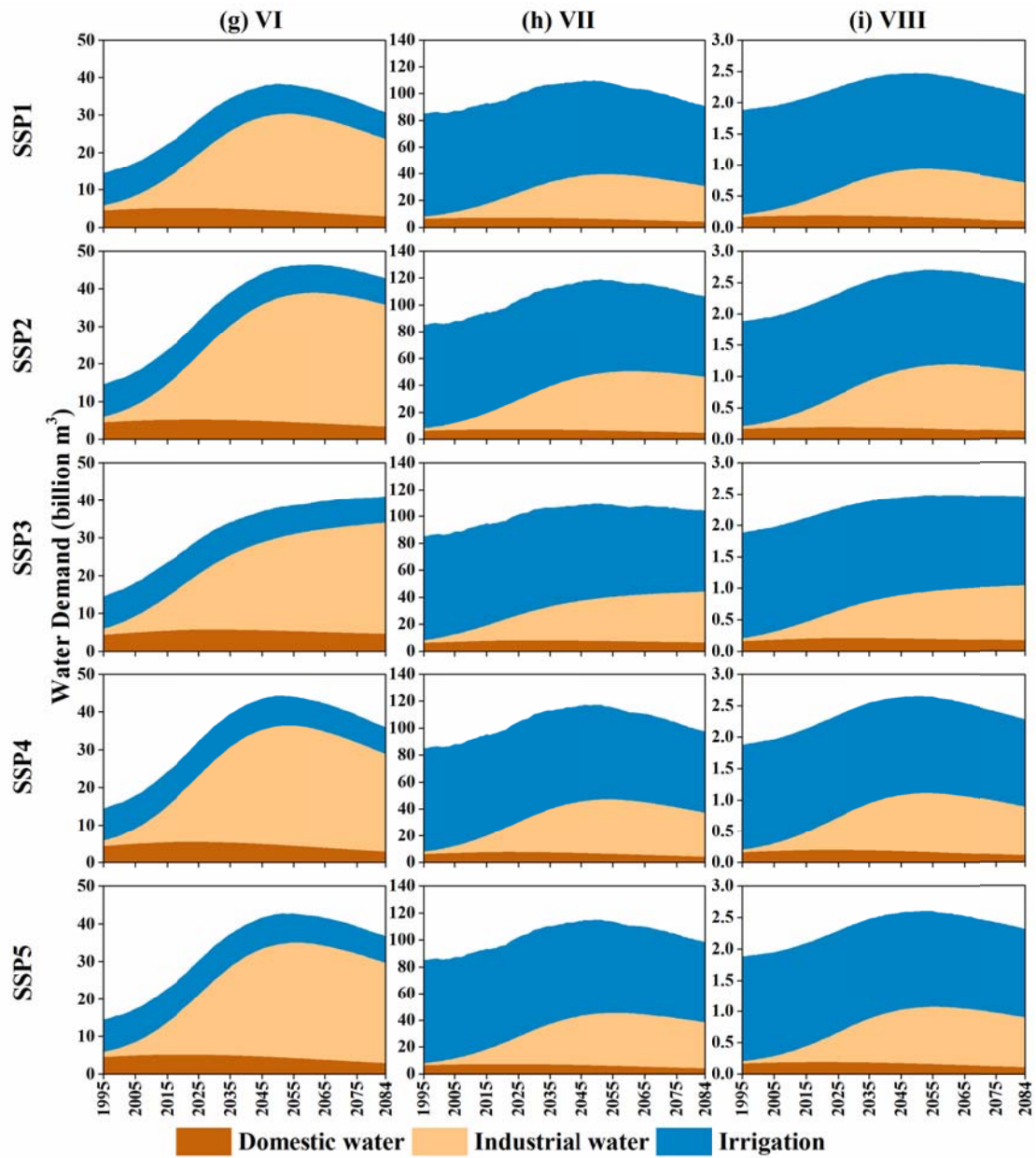
35

39 Figure S4 Simulated runoff (a) and the bias corrected runoff (b) during 1995-2084 in the YR  
 40 basin. The shaded band denotes the inter-quartile range and the black solid line shows the  
 41 median of 50 GCM-GGHM pairs. The solid and dashed colored lines represent the median of the  
 42 five GCMs for each GGHM.



40

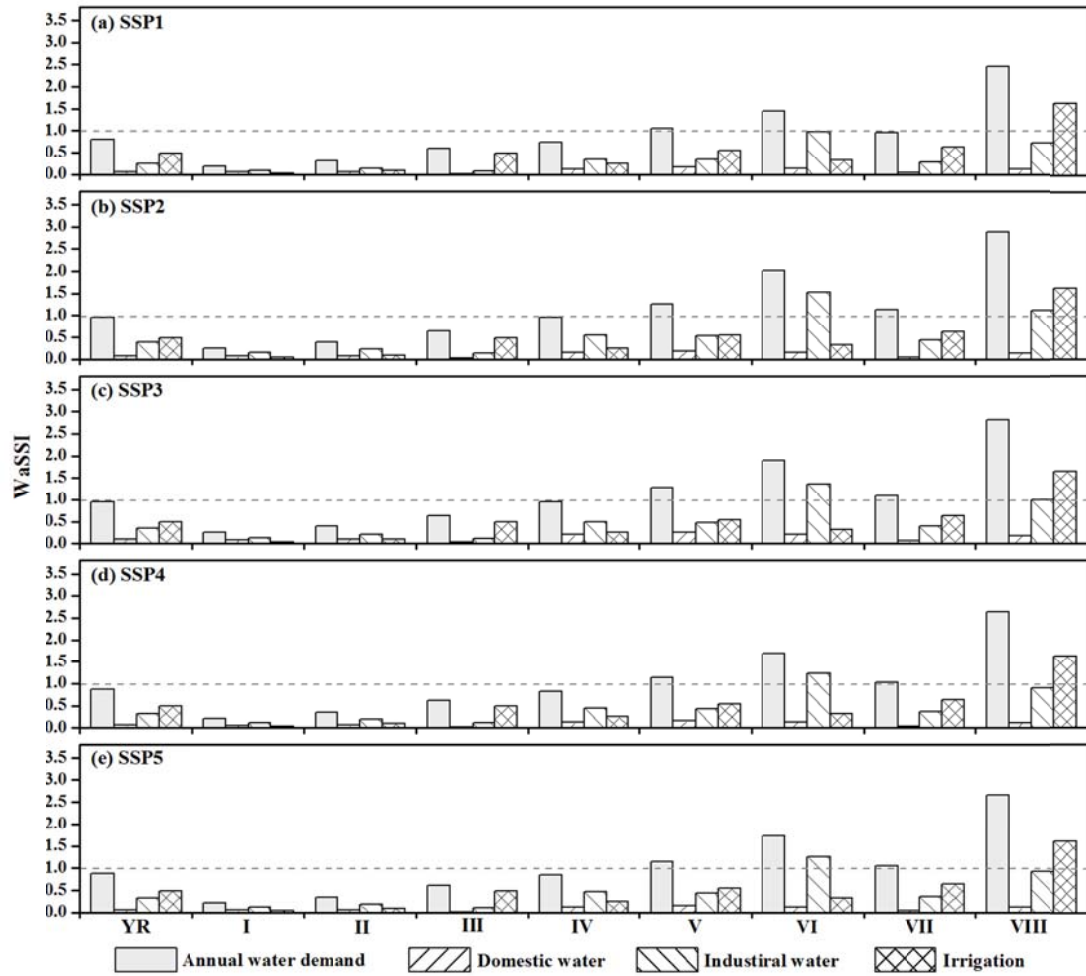
42 Figure S5 Estimated sectoral (domestic, industrial and irrigation) and total annual water demand  
 43 (million m<sup>3</sup> yr<sup>-1</sup>) in sub-basin III, IV and V from 1995 to 2085 during the 21<sup>st</sup> century.



43

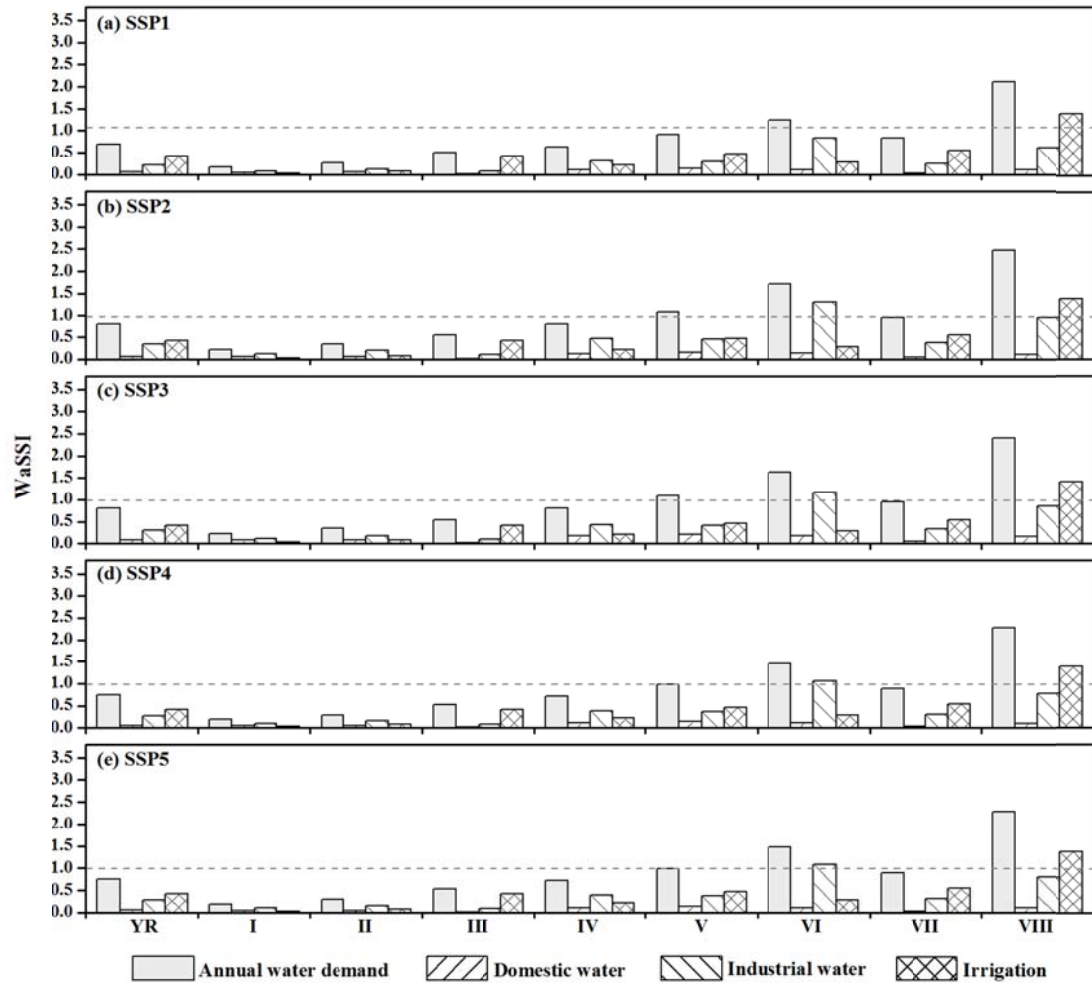
45 Figure S6 Estimated sectoral (domestic, industrial and irrigation) and total annual water demand  
 46 (million  $\text{m}^3 \text{yr}^{-1}$ ) in sub-basin VI, VII and VIII from 1995 to 2085 during the 21<sup>st</sup> century.





46

50 Figure S7 WaSSI calculated as the ratio of annual water demand and sectoral (domestic,  
 51 industrial and irrigation) water withdrawals to annual water supply for the YR basin and eight  
 52 sub-basins at the end of the 21<sup>st</sup> century under the five different SSPs. The annual water supply  
 53 was estimated with an RHWA value of 60% (RHWA60).



51

55 Figure S8 WaSSI calculated as the ratio of annual water demand and sectoral (domestic,  
 56 industrial and irrigation) water withdrawals to annual water supply for the YR basin and eight  
 57 sub-basins at the end of the 21<sup>st</sup> century under the five different SSPs. The annual water supply  
 58 was estimated with an RHWA value of 70% (RHWA70).

55 **Supplemental Tables:**

56 Table S1 Main characteristics of the global gridded hydrological models (GGHMs) used in this study.

Model name	Energy balance	Evaporation scheme <sup>a</sup>	Runoff scheme <sup>a</sup>	Vegetation dynamics	References
DBH	Yes	Energy balance	Infiltration excess	No	Tang et al. (2007, 2008)
H80	Yes	Bulk formula	Saturation excess, no-linear	No	Hanasaki et al. (200a, 2008b)
LPJmL	No	Priestley-Taylor	Saturation excess	Yes	Bondeau et al. (2007); Rost et al. (2008)
MacPDM	No	Penman-Monteith	Saturation excess, no-linear	No	Arnell (1999); Gosling and Arnell (2011)
MATSIRO	Yes	Bulk formula	Infiltration excess, saturation excess, groundwater	No	Takata et al. (2003); Pokhrel et al. (2012)
MPI-HM	No	Penman-Monteith	Saturation excess, no-linear	No	Hagemann et al. (2003); Stacke et al. (2012)
PCR-GLBWB	No	Hamon	Saturation excess, Beta function	No	Wada et al. (2010); Van Beek et al (2001); Wada et al. (2011)
VIC	Only for snow	Penman-Monteith	Saturation excess, no-linear	No	Liang et al. (1994); Lohmann and Raschke (1988)
WaterGAP	No	Priestley-Taylor	Beta function	No	Döll et al. (2012); Flörke et al. (2013)
WBM	No	Hamon	Saturation excess	No	Vörösmarty et al. (1998); Wisser et al. (2010)

57 Note: a Bulk formula: Bulk transfer coefficients are used when calculating turbulent heat fluxes.

58 b Non-linear: Subsurface runoff is a non-linear function of soil moisture.

59

60 Table S2 Main characteristics of the global gridded crop models (GGCMs) used in this study.

Model name	Evapo-transpiration	Irrigation <sup>a, b</sup>	Crops	References
EPIC	Penman-Monteith	90/100/500/50/20 <sup>h</sup> maximum applied irrigation: 500 mm yr <sup>-1</sup>	Maize, wheat, soybean, rice, barley, managed grass, millet, rapeseed, sorghum, sugarcane, drybean, cassava, cotton, sunflower, groundnut	Williams (1995); Izaurralde et al. (2006)
GEPIC	Penman-Monteith	90/100/2000/1000/0 .01 <sup>h</sup>	Maize, wheat, soybean, rice	Williams (1990); Liu et al. (2007)
LPJmL	Priestley-Taylor	300/90/10 0/varies <sup>g</sup>	Maize, wheat, soybean, rice, millet, cassava, sugar beet, field pea, rapeseed, sunflower, groundnut, sugarcane	Bondeau et al. (2007); Fader et al. (2010)
LPJ-GUESS	Priestley-Taylor	200/90/10 0/100 <sup>g</sup>	Maize, wheat, soybean, rice	Bondeau et al. (2007); Smith et al. (2011)
pDSSAT	Priestley-Taylor	40/80/100/75 <sup>g</sup> rice: 30/50/100 /100 <sup>g</sup>	Maize, wheat, soybean, rice	Elliott et al. (2014); Jones et al. (2013)
PEGASUS	Priestley-Taylor	40/90/100/100 <sup>g</sup>	Maize, wheat, soybean	Deryng et al. (2011)

61 Note: a Irrigation rules: IMDEP(cm): Depth of soil moisture measured; ITHRL(%): Critical lower  
 62 soil moisture threshold to trigger irrigation event; ITHRU(%): Upper soil moisture threshold to stop  
 63 irrigation; IREFF(%): Irrigation application efficiency

64 b Irrigation rules: EPIC and GEPIC models: BIR(%): Water stress in crop to trigger automatic  
 65 irrigation; EFI(%): Irrigation efficiency - runoff from irrigation water; VIMX(mm): Maximum of  
 66 annual irrigation volume; ARMX(mm): Maximum of single irrigation volume allowed; ARMN(mm):  
 67 Minimum of single irrigation volume allowed

68

69 Table S3 Overview of global climate models (GCMs) used in this study.

	Name	Institute	References
GCMs	HadGEM2-ES	Met Office Hadley Centre	Jones et al. (2011)
	IPSL-CM5A-LR	Institute Pierre-Simon Laplace	Mignot et al. (2013)
	MIROC-ESM-CHEM	Japan Agency for Marine-Earth Science and Technology, Atmosphere and Ocean Research Institute (The University of Tokyo), and National Institute for Environmental Studies	Watanabe et al. (2011)
	GFDL-ESM2M	Geophysical Fluid Dynamics Laboratory	Dunne et al. (2012, 2013)
	NorESM1-M	Norwegian Climate Centre	Bentsen et al. (2013); Iversen et al. (2013)

70

71

72 Table S4 Change rate for domestic water intensity ( $L \text{ person}^{-1} \text{ day}^{-1} \text{ year}^{-1}$ ) (Hanasaki et al., 2013)

		High efficiency (HE)	Medium efficiency (HE)	Low efficiency (HE)
per capita GDP < 2000 USD	$200 \leq i_{dom}$	-2 ( $200 \leq i_{dom}$ )	0	2 ( $i_{dom} < 600$ )
	$i_{dom} < 200$	2 ( $i_{dom} < 200$ )	2 ( $i_{dom} < 300$ )	2 ( $i_{dom} < 400$ )
2000 USD $\leq$ per capita GDP		-2 ( $200 \leq i_{dom}$ )	0	2 ( $i_{dom} < 800$ )

73

74

75 **Reference:**

- 76 Arnell, N.: A simple water balance model for the simulation of streamflow over a large geographic domain, *J.*  
77 *Hydrol.*, 217: 314-335, 1999.
- 78 Bentsen, M., Bethke, I., Debernard, J. B., Iversen, T., Kirkevåg, A., Seland, Ø., Drange, H., Roelandt, C.,  
79 Seierstad, I. A., Hoose, C., and Kristjansson, J. E.: The Norwegian Earth System Model, NorESM1-M – part 1:  
80 Description and basic evaluation of the physical climate, *Geosci. Model Dev.*, 6, 687-720, 2013.
- 81 Bondeau, A., Smith, P. C., Zaehle, S., Schaphoff, S., Lucht, W., Cramer, W., Gerten, D., Lotze-Campen, H.,  
82 Müller, C., Reichstein, M., and Smith, B.: Modelling the role of agriculture for the 20<sup>th</sup> century global terrestrial  
83 carbon balance, *Glob. Change Biol.*, 13, 679-706, 2007.
- 84 Bondeau, A., Smith, P., Zaehle, S., Schaphoff, S., Lucht, W., Cramer, W., Gerten, D., Lotze-Campen, H., Müller,  
85 C., Reichstein, M., and Smith, B.: Modelling the role of agriculture for the 20<sup>th</sup> century global terrestrial carbon  
86 balance, *Glob. Change Biol.*, 13, 679-706, 2007.
- 87 Deryng, D., Sacks, W. J., Barford, C. C., and Ramankutty, N.: Simulating the effects of climate and agricultural  
88 management practices on global crop yield, *Global Biogeochem. Cy.*, 25(2), GB2006, doi:  
89 10.1029/2009GB003765, 2011.
- 90 Döll, P., Hoffmann-Dobrev, H., Portmann, F. T., Siebert, S., Eicker, A., Rodell, M., Strassberg, G., and Scanlon,  
91 B. R.: Impact of water withdrawals from groundwater and surface water on continental water storage variations,  
92 *J. Geodyn.*, 59-60, 143-156, 2012.
- 93 Dunne, J. P., John, J. G., Adcroft, A. J., Griffies, S. M., Hallberg, R. W., Shevliakova, E., Stouffer, R. J., Cooke,  
94 W., Dunne, K. A., Harrison, M. J., Krasting, J. P., Malyshev, S. L., Milly, P. C. D., Phillips, P. J., Sentman, L. T.,  
95 Samuels, B. L., Spelman, M. J., Winton, M., Wittenberg, A. T., and Zadeh, N.: GFDL's ESM2 global coupled  
96 climate-carbon earth system models, part 1: Physical formulation and baseline simulation characteristics, *J.*  
97 *Climate*, 25, 6646-6665, 2012.
- 98 Dunne, J. P., John, J. G., Shevliakova, E., Stouffer, R. J., Krasting, J. P., Malyshev, S. L., Milly, P. C. D., Sentman,  
99 L. T., Adcroft, A. J., Cooke, W., Dunne, K. A., Griffies, S. M., Hallberg, R. W., Harrison, M. J., Levy, H.,  
100 Wittenberg, A. T., Phillips, P. J., and Zadeh, N.: GFDL's ESM2 global coupled climate-carbon earth system  
101 models, part 2: Carbon system formulation and baseline simulation characteristics, *J. Climate*, 26, 2247-2267,  
102 2013.
- 103 Elliott, J., Kelly, D., Chryssanthacopoulos, J., Glotter, M., Jhunjhnuwala, K., Best, N., Wilde, M., and Foster, I.:  
104 The Parallel System for Integrating Impact Models and Sectors (pSIMS), *Environ. Modell. Softw.*, 62, 509-516,  
105 2013.
- 106 Fader, M., Rost, S., Müller, C., Bondeau, A., and Gerten, D.: Virtual water content of temperate cereals and  
107 maize: Present and potential future patterns, *J. Hydrol.*, 384, 218-231, 2010.
- 108 Flörke M., Kynast, E., Barlund, I., Eisner, S., Wimmer, F., and Alcamo, J.: Domestic and industrial water uses of  
109 the past 60 years as a mirror of socio-economic development: A global simulation study, *Global Environ. Chang.*,  
110 23, 144-156, 2013.
- 111 Gosling, S. N., and Arnell, N. W.: Simulating current global river runoff with a global hydrological model: Model  
112 revisions, validation, and sensitivity analysis, *Hydrol. Process.*, 25: 1129-1145, 2011.
- 113 Hagemann, S., and Dümenil, G. L.: Improving a subgrid runoff parameterization scheme for climate models by  
114 the use of high resolution data derived from satellite observations, *Clim. Dynam.*, 21, 349-359, 2003.
- 115 Hanasaki, N., Fujimori, S., Yamamoto, T., Yoshikawa, S., Masaki, Y., Hijioka, Y., Kainuma, M., Kanamori, Y.,  
116 Masui, T., Takahashi, K., and Kanae, S.: A global water scarcity assessment under Shared Socio-economic  
117 Pathways – Part 1: Water use. *Hydrol. Earth Syst. Sci.*, 17, 2375-2391, 2013.
- 118 Hanasaki, N., Kanae, S., Oki, T., Masuda, K., Motoya, K., Shirakawa, N., Shen, Y., and Tanaka, K.: An integrated

119 model for the assessment of global water resources – Part 1: Model description and input meteorological forcing,  
120 *Hydrol. Earth Syst. Sc.*, 12, 1007-1025, 2008a.

121 Hanasaki, N., Kanae, S., Oki, T., Masuda, K., Motoya, K., Shirakawa, N., Shen, Y., and Tanaka, K.: An integrated  
122 model for the assessment of global water resources – Part 2: Applications and assessments, *Hydrol. Earth Syst.*  
123 *Sc.*, 12, 1027-1037, 2008b.

124 Ho, C., Stephenson, S., Collins, M., Freeo, C., and Brown, S.: Calibration strategies: A source of additional  
125 uncertainty in climate change projections, *B. Am. Meteorol. Soc.*, 93(1):21-26, 2012.

126 Iversen, T., Bentsen, M., Bethke, I., Debernard, J. B., Kirkevag, A., Seland, O., Drange, H., Kristjansson, J. E.,  
127 Medhaug, I., Sand, M., and Seierstad, I. A.: The Norwegian Earth System Model, NorESM1-M – part 2: Climate  
128 response and scenario projections, *Geosci. Model Dev.*, 6, 389-415, 2013.

129 Izaurralde, R.C., Williams, J. R., McGill, W. B., Rosenberg, N. J., and QuirogaJakas, M. C.: Simulating soil C  
130 dynamics with EPIC: Model description and testing against long-term data, *Ecol. Model.*, 192(3-4), 362-384,  
131 2006.

132 Jones, C. D., Huges, J. K., Bellouin, N., Hardiman, S. C., Jones, G. S., Knight, J., Liddicoat, S., O'Connor, F. M.,  
133 Andres, R. J., Bell, C., Boo, K., Bozzo, A., Butchart, N., Cadule, P., Corbin, K. D., Doutriaux-Boucher, M.,  
134 Friedlingstein, P., Gornall, J., Gary, L., Halloran, P. R., Hurtt, G., Ingram, W. J., Lanarque, J. F., Law, R. M.,  
135 Meinshausen, M., Osprey, S., Palin, E. J., Chini, L., Raddatz, T., Sanderson, M. G., Sellar, A. A., Schurer, A.,  
136 Valdes, P., Wood, N., Woodward, S., Yoshioka, M., and Zerroukat, M.: The HadGEM2-ES implementation of  
137 CMIP5 centennial simulations, *Geosci. Model Dev.*, 4, 543-570, 2011.

138 Jones, J.W., Hoogenboom, G., Porter, C. H., Boote, K. J., Batchelor, W. D., Hunt, L. A., Wilkens, P. W., Singh, U.,  
139 Gijssman, A., and Ritchie, J. T.: The DSSAT cropping system model, *Eur. J. Agron.*, 18, 235-265, 2003.

140 Liang, X., Lettenmaier, D. P., Wood, E. F., and Burges, S. J.: A simple hydrologically based model of land surface  
141 water and energy fluxes for general circulation models, *J. Geophys. Res.*, 99, 14415-14428, 1994.

142 Liu, J., Williams, J. R., Zehnder, A. J. B., and Hong, Y.: GEPIC–modelling wheat yield and crop water  
143 productivity with high resolution on a global scale, *Agr. Syst.*, 94(2), 478-493, 2007.

144 Lohmann, D., and Raschke, E.: Regional scale hydrology: I. Formulation of the VIC-2L model coupled to a  
145 routing model, *Hydrolog. Sci. J.*, 43, 131-141, 1998.

146 Mignot, J., and Bony, S.: Presentation and analysis of the IPSL and CNRM climate models used in CMIP5, *Clim.*  
147 *Dynam*, 40(9), 2089-2089, 2013.

148 Pokhrel, Y., Hanasaki, N., Koirala, S., Cho, J., Yeh, P., Kim, H., Kanae, S., and Oki, T.: Incorporating  
149 anthropogenic water regulation modules into a land surface model. *J. Hydrometeorol.*, 13: 255-269, 2012.

150 Rost, S., Gerten, D., Bondeau, A., Lucht, W., Rohwer, J., and Schaphoff, S.: Agricultural green and blue water  
151 consumption and its influence on the global water system, *Water Resour. Res.*, 44: 1-17, 2008.

152 Smith, B., Prentice, I. C., and Sykes, M. T.: Representation of vegetation dynamics in the modelling of terrestrial  
153 ecosystems: Comparing two contrasting approaches within European climate space, *Global Ecol. Biogeogr.*, 10,  
154 621-637, 2001.

155 Stacke, T., and Hagemann, S.: Development and validation of a global dynamical wetlands extent scheme,  
156 *Hydrol. Earth Syst. Sc.*, 9, 405-440, 2012.

157 Takata, K., Emori, S., and Watanabe, T.: Development of the minimal advanced treatments of surface interaction  
158 and runoff, *Global Planet. Change*, 38: 209-222, 2003.

159 Tang, Q., Oki, T., Kanae, S., and Hu, H.: Hydrological cycles change in the Yellow River Basin during the last  
160 half of the twentieth century, *J. Climate*, 21: 1790-1806, 2008.

161 Tang, Q., Oki, T., Kanae, S., and Hu, H.: The influence of precipitation variability and partial irrigation within  
162 grid cells on a hydrological simulation, *J. Hydrometeorol.*, 8: 499-512, 2007.



163 Van Beek, L., Wada, Y., and Bierkens, M. F. P.: Global monthly water stress: 1. Water balance and water  
164 availability, *Water Resour. Res.*, 47, W07517, doi: 10.1029/2010WR009791, 2011.

165 Vörösmarty, C. J., Federer, C. A., and Schloss, A. L.: Potential evaporation functions compared on US  
166 watersheds: Possible implications for global-scale water balance and terrestrial ecosystem modeling, *J. Hydrol.*,  
167 207, 147-169, 1998.

168 Wada, Y., van Beek, L., van Kempen, C., Reckman, J., Vasak, S., and Bierkens, M.: Global depletion of  
169 groundwater resources, *Geophys. Res. Lett.*, 37, L20402, doi: 10.1029/1010GL044571, 2010.

170 Wada, Y., van Beek, L., Viviroli, D., Duee, H. H., Weingartner, R., and Bierkens, M.: Global monthly water stress:  
171 2 Water demand and severity of water stress, *Water Resour. Res.*, 47, W07518, doi: 10.1029/2010WR009792,  
172 2011.

173 Watanabe, S., Hajima, T. Sudo, K., Nagashima, T., Takemura, T., Okajima, H., Nozawa, T., Kawase, H., Abe, M.,  
174 Yokohata, T., Ise, T., Sato, H., Kato, E., Takata, K., Emori, S., and Kawamiya, M.: MIROC-ESM 2010: Model  
175 description and basic results of CMIP5-20c3m experiments, *Geosci. Model Dev.*, 4, 845-872, 2011.

176 Williams, J. R.: EPIC-Erosion/Productivity Impact Calculator. United States Department of Agriculture  
177 Agricultural Research Service. Technical Bulletin Number 1768. Springfield, VA, 1990.

178 Williams, J. R.: The EPIC. In: Singh, V.P. (Ed.). *Computer Models of Watershed Hydrology* Water Resources  
179 Publications. Littleton, CO. pp. 909-1000 (Chapter 25), 1995.

180 Wisser, D., Fekete, B. M., Vörösmarty, C. J., and Schumann, A. H.: Reconstructing 20<sup>th</sup> century global  
181 hydrography: A contribution to the Global Terrestrial Network- Hydrology (GTN-H), *Hydrol. Earth Syst. Sc.*, 14,  
182 1-24, 2010.