



Supplement of

Properties of young contrails – a parametrisation based on large-eddy simulations

Simon Unterstrasser

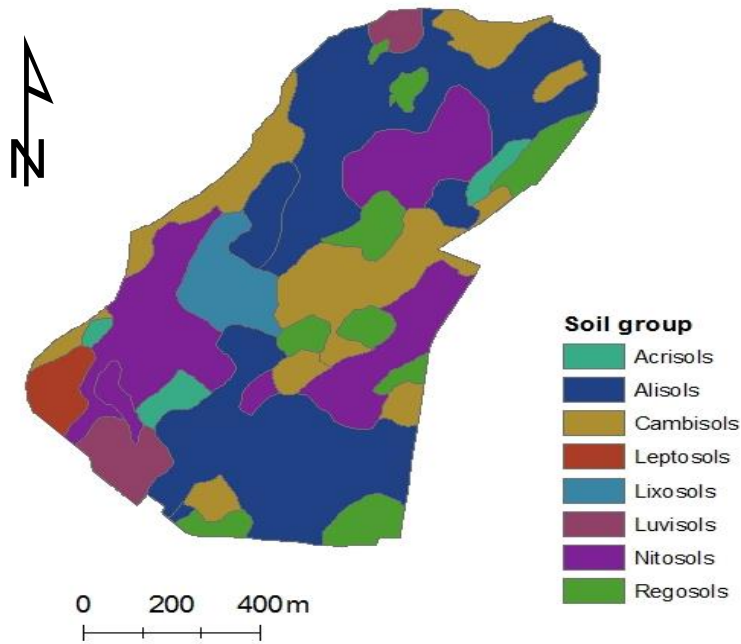
Correspondence to: S. Unterstrasser (simon.unterstrasser@dlr.de)

- acp-16-2059-2016-supplement-title-page.pdf
- contrail_properties.f90

The copyright of individual parts of the supplement might differ from the CC-BY 3.0 licence.

1 **Supplementary Materials**

2 **Supplementary material A: Soil Map of the Anjeni Watershed**



3

4 Figure S1. Soil map of the Anjeni watershed. Source (Zeleeke, 2000)

5

6

7

8

9

10

11

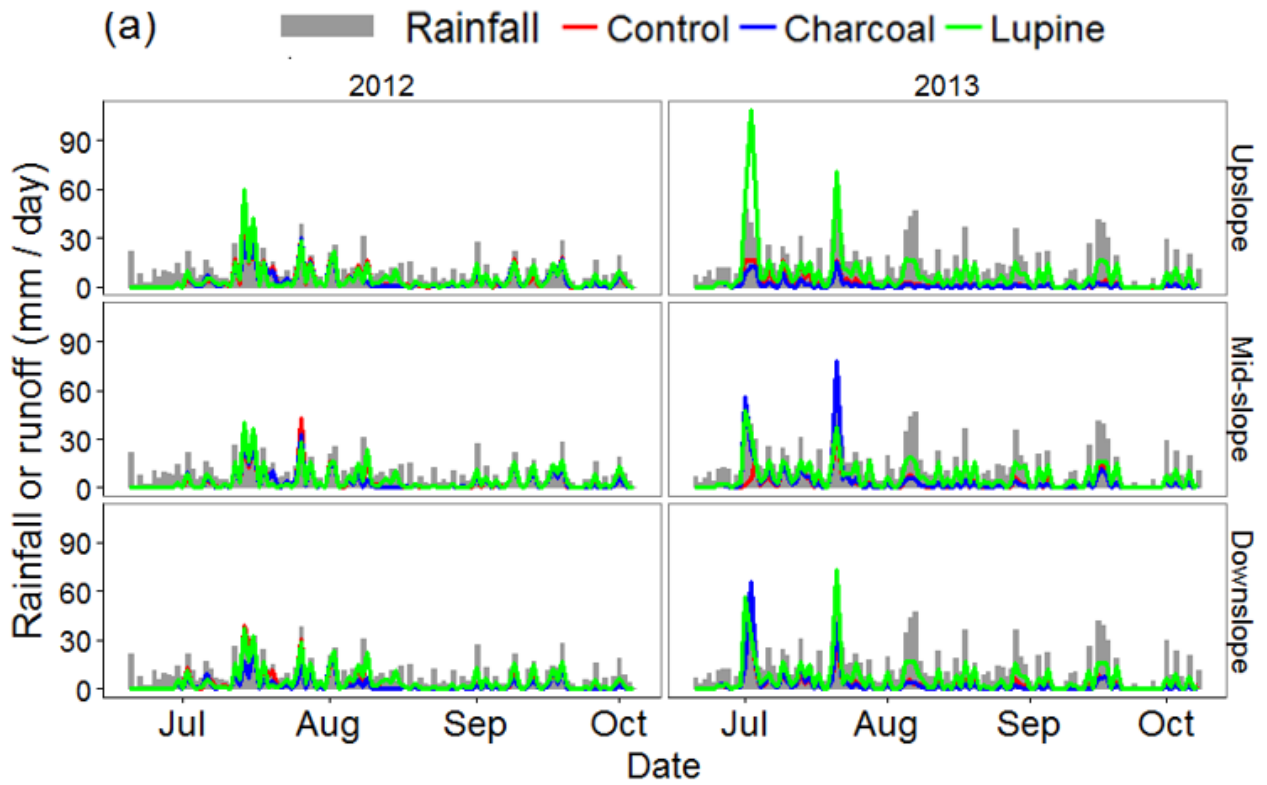
12

13

14

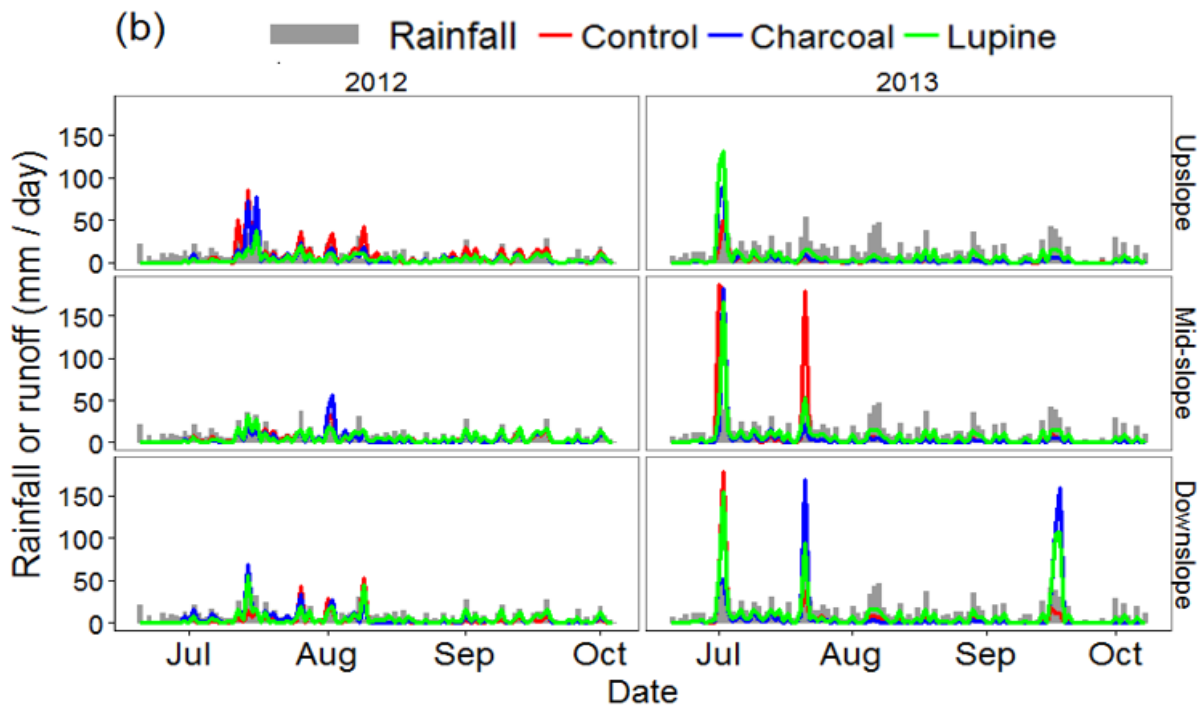
15

1 **Supplementary material B: Daily Plot Runoff Response**



2

3 Figure S2. Daily rainfall versus runoff from plots along Transect 1



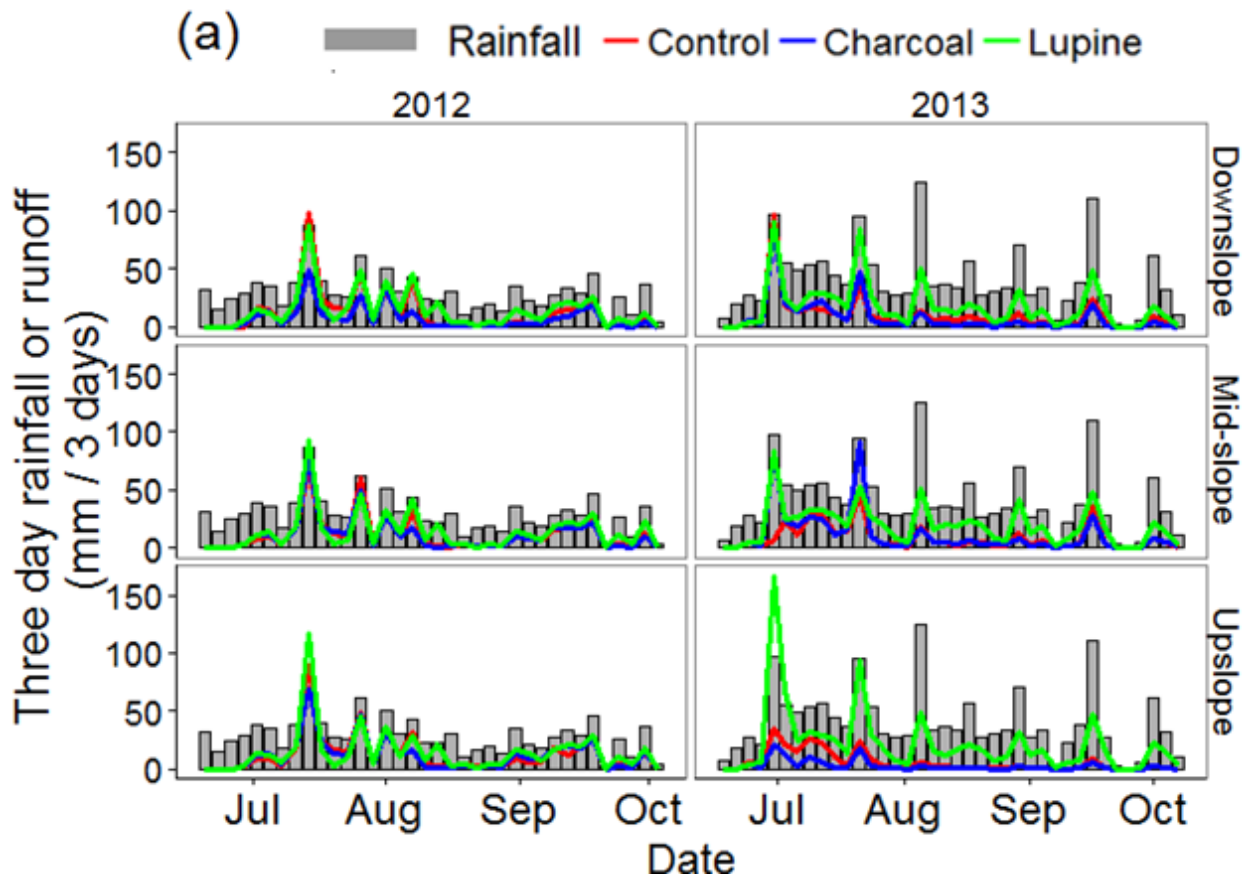
4

5 Figure S3. Daily rainfall versus runoff from plots along Transect 2

1 **Supplementary material C: Aggregated Plot Runoff Response**

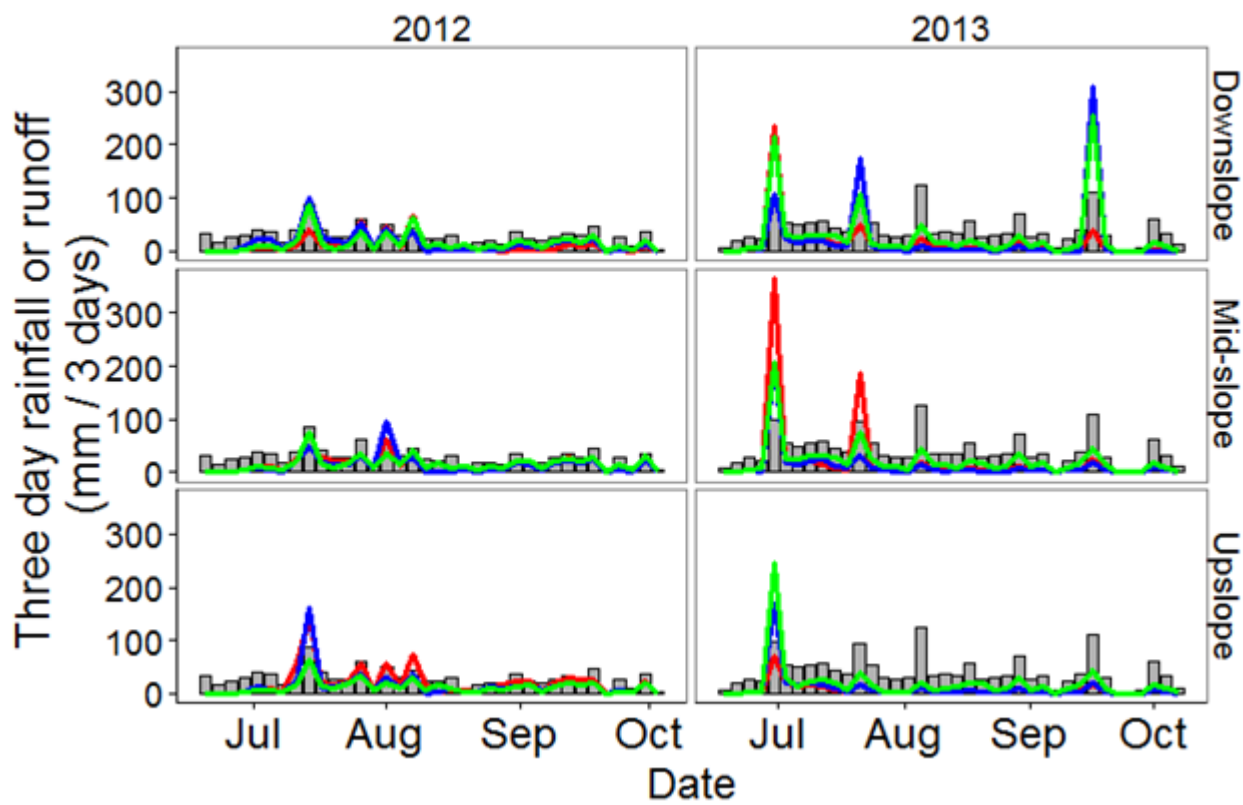
2

3



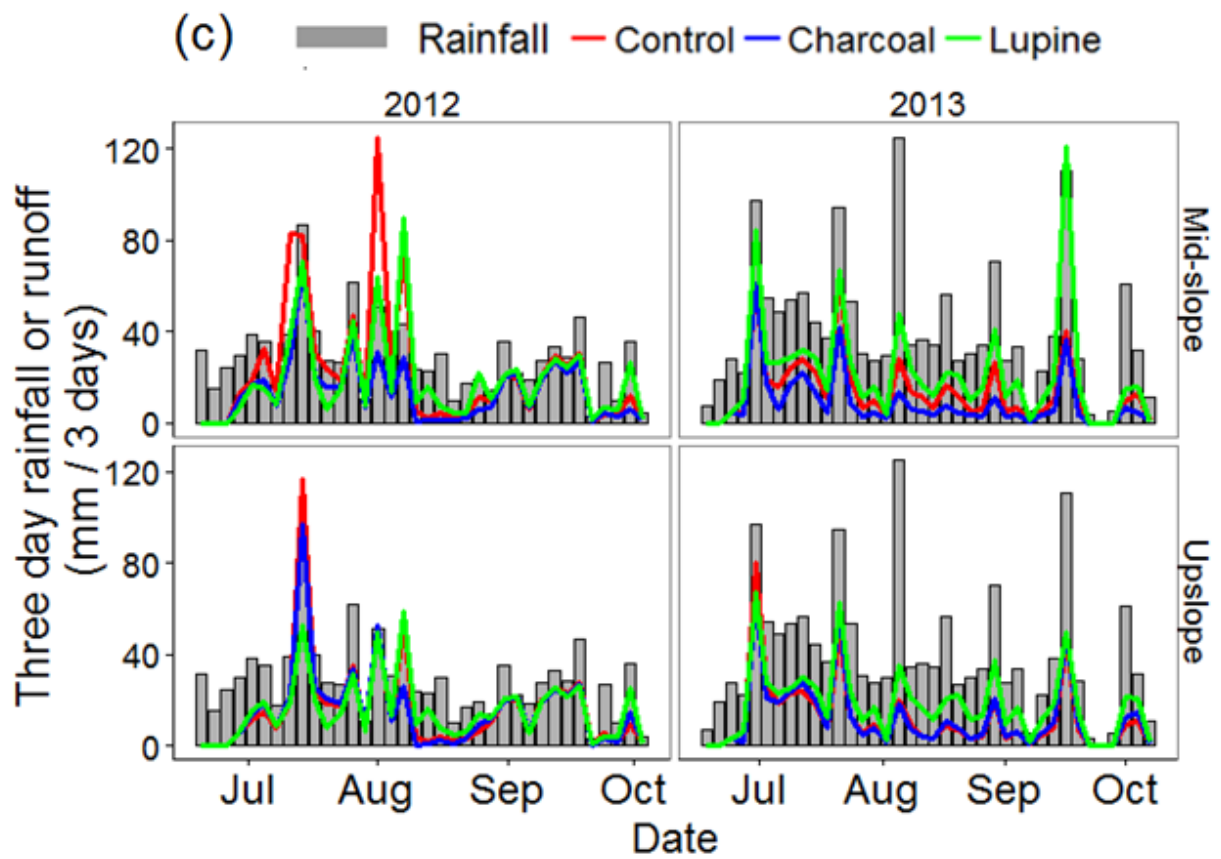
4

(b) Rainfall Control Charcoal Lupine



1

2



1

2 Figure S5. Three day rainfall and unadjusted three day runoff (aggregated on 3-day intervals)
 3 for individual plots from different slope positions along Transect 1 (a), Transect 2 (b), and
 4 Transect 3 (c)

5

6

7

8

9

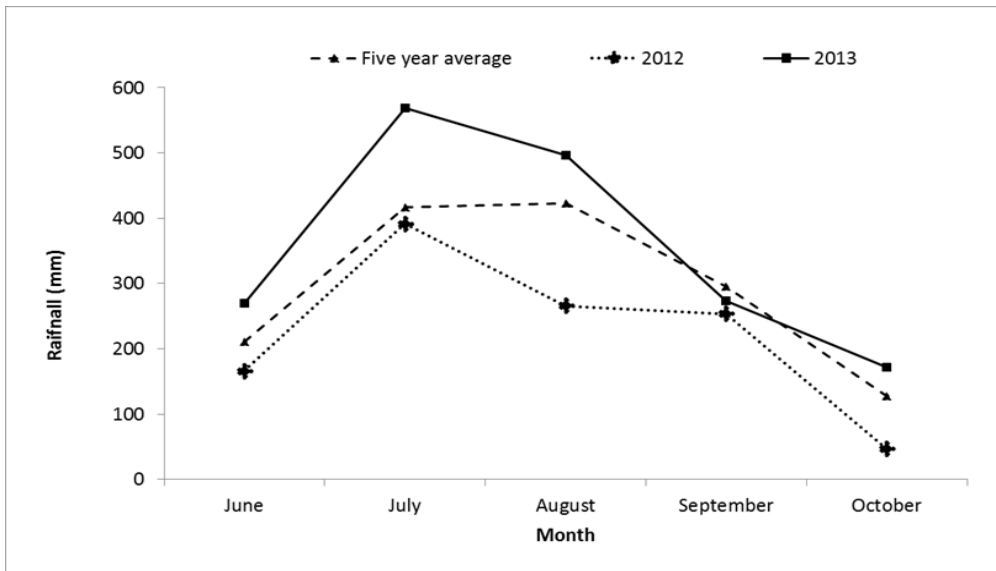
10

11

12

13

1 **Supplementary material D: Monthly Rainfall Distribution during the Monsoon**
2 **Season**

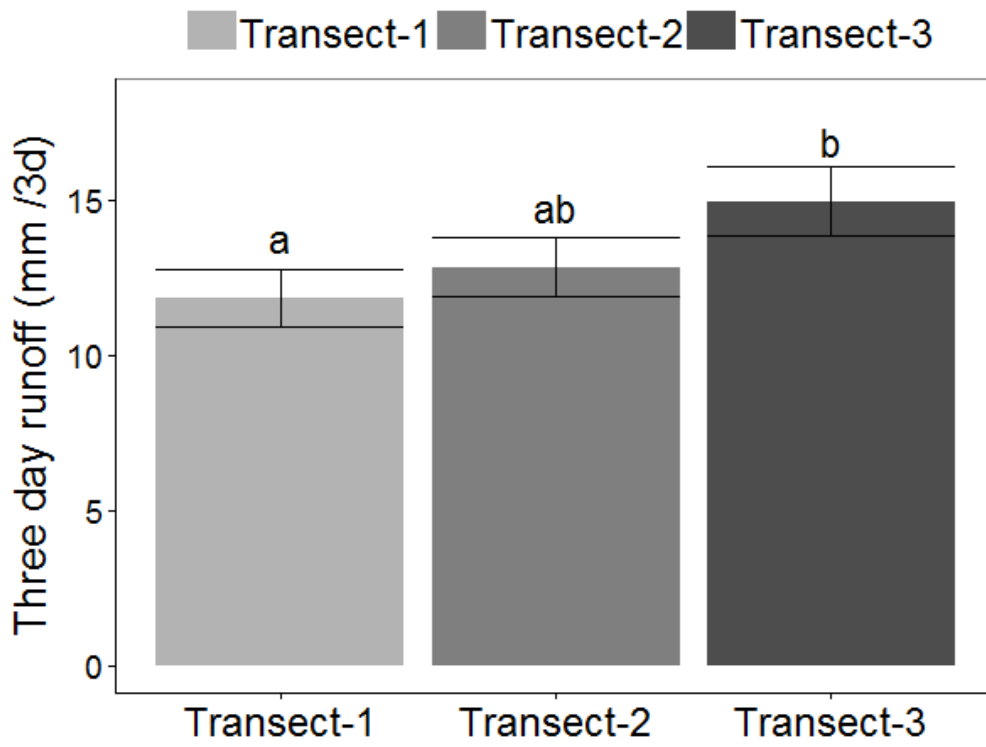


3

4 Figure S6. Monthly rainfall distribution during the monsoon period of 2012, 2013 and 5-
5 year average

6

1 **Supplementary material E: Runoff response between transects**



2

3 Figure S7. Runoff responses between transects. Transects not sharing the same letter
4 are statically significant at $p < 0.05$.

5

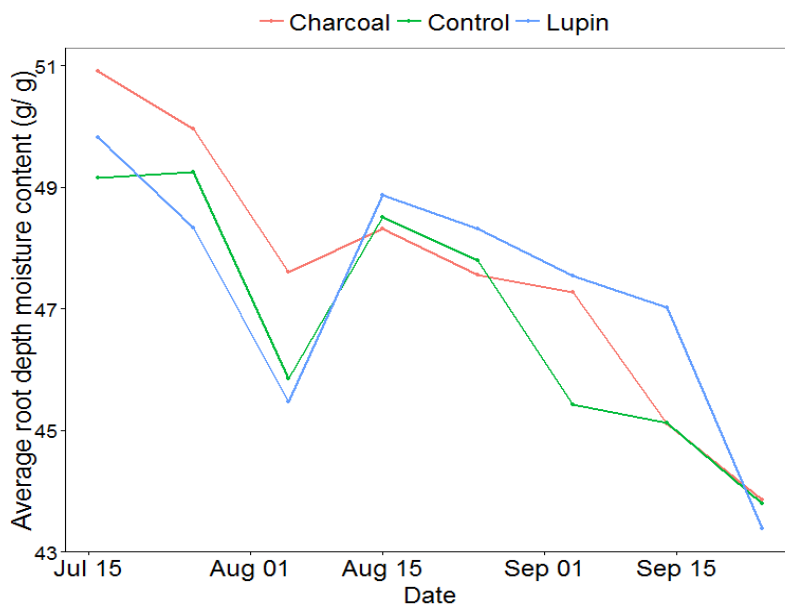
1 **Supplementary material F: Lupine crop root**



2

3 Figure S8. Lupine crop root morphology

4 **Supplementary material G: Soil moisture content**



5

6 Figure S9. Average root depth gravimetric moisture content of plots with different treatment

7