



**Modelling ecosystem
services for
ecosystem
accounting**

C. Duku et al.

**Towards ecosystem accounting:
a comprehensive approach to modelling
multiple hydrological ecosystem services**

C. Duku¹, H. Rathjens², S. J. Zwart³, and L. Hein¹

¹Environmental Systems Analysis Group, Wageningen University, P.O. Box 47, 6700AA, Wageningen, the Netherlands

²Department of Earth, Atmospheric, and Planetary Sciences, Purdue University 550 Stadium Mall Drive, West Lafayette, IN 47907-2093, USA

³Africa Rice Center, 2031 PB, Cotonou, Benin

Received: 20 November 2014 – Accepted: 13 March 2015 – Published: 30 March 2015

Correspondence to: C. Duku (confidence.duku@wur.nl, confidence.duku@gmail.com)

Published by Copernicus Publications on behalf of the European Geosciences Union.

Title Page

Abstract

Introduction

Conclusions

References

Tables

Figures



Back

Close

Full Screen / Esc

Printer-friendly Version

Interactive Discussion



Abstract

Ecosystem accounting is an emerging field that aims to provide a consistent approach to analysing environment-economy interactions. In spite of the progress made in mapping and quantifying hydrological ecosystem services, several key issues must be addressed if ecohydrological modelling approaches are to be aligned with ecosystem accounting. They include modelling hydrological ecosystem services with adequate spatiotemporal detail and accuracy at aggregated scales to support ecosystem accounting, distinguishing between service capacity and service flow, and linking ecohydrological processes to the supply of dependent hydrological ecosystem services. We present a spatially explicit approach, which is consistent with ecosystem accounting, for mapping and quantifying service capacity and service flow of multiple hydrological ecosystem services. A grid-based setup of a modified Soil Water and Assessment Tool (SWAT), SWAT Landscape, is first used to simulate the watershed ecohydrology. Model outputs are then post-processed to map and quantify hydrological ecosystem services and to set up biophysical ecosystem accounts. Trend analysis statistical tests are conducted on service capacity accounts to track changes in the potential to provide service flows. Ecohydrological modelling to support ecosystem accounting requires appropriate decisions regarding model process inclusion, physical and mathematical representation, spatial heterogeneity, temporal resolution, and model accuracy. We demonstrate this approach in the Upper Ouémé watershed in Benin. Our analyses show that integrating hydrological ecosystem services in an ecosystem accounting framework provides relevant information on ecosystems and hydrological ecosystem services at appropriate scales suitable for decision-making. Our analyses further identify priority areas important for maintaining hydrological ecosystem services as well as trends in hydrological ecosystem services supply over time.

Modelling ecosystem services for ecosystem accounting

C. Duku et al.

Title Page

Abstract

Introduction

Conclusions

References

Tables

Figures



Back

Close

Full Screen / Esc

Printer-friendly Version

Interactive Discussion



1 Introduction

Ecosystem accounting provides a systematic framework to link ecosystems to economic activities (Boyd and Banzhaf, 2007; Maler et al., 2008; Edens and Hein, 2013; EC et al., 2013; Obst et al., 2013). Specifically, ecosystem accounting aims to integrate the concept of ecosystems services, i.e., the contribution of ecosystems to human welfare (TEEB, 2010), in a national accounting context, as described in UN et al. (2009). There is increasing interest in ecosystem accounting as a new, comprehensive tool for environmental monitoring and management (Obst et al., 2013). The recently released System of Environmental-Economic Accounting (SEEA)-Experimental Ecosystem Accounting guideline (EC et al., 2013) provides guidelines for setting up ecosystem accounts. A key distinguishing feature of ecosystem accounting is the distinction between the flow of ecosystem services and the capacity of ecosystems to provide service flows (EC et al., 2013). Service flow is the contribution in space and time of an ecosystem to either a utility function (e.g. private household) or a production function (e.g. crop production) that leads to a human benefit, whereas service capacity is a reflection of ecosystem condition and extent at a point in time, and the resulting potential to provide service flows (Edens and Hein, 2013; EC et al., 2013).

An issue that is currently unresolved is the incorporation of hydrological ecosystem services into ecosystem accounts (e.g. EC et al., 2013). Hydrological ecosystem services are provided by ecohydrological interactions between terrestrial and aquatic ecosystem components (Brauman et al., 2007; D’Odorico et al., 2010). Hydrological ecosystem services provision underlies water and food security. A variety of approaches have been used to model, map and quantify these services (e.g. Le Maitre et al., 2007; Naidoo et al., 2008; Liqueste et al., 2011; Maes et al., 2012; Notter et al., 2012; Willaarts et al., 2012; Leh et al., 2013; Liu et al., 2013; Terrado et al., 2014 for an overview). However, key aspects requiring further research include the modelling of hydrological ecosystem services with adequate spatiotemporal detail and accuracy at aggregated scales to support accounting, distinguishing between service capacity

HESSD

12, 3477–3526, 2015

Modelling ecosystem services for ecosystem accounting

C. Duku et al.

Title Page

Abstract

Introduction

Conclusions

References

Tables

Figures



Back

Close

Full Screen / Esc

Printer-friendly Version

Interactive Discussion



to capture these spatial variations increase the uncertainties associated with modelled ecohydrological processes and dependent hydrological ecosystem services produced at subwatershed scales.

Finally, temporal variability in ecohydrological processes cause variations in hydrological ecosystem services provision over time within the same spatial unit (Santhi et al., 2008; Fisher et al., 2009). This can have significant impacts on the type of stakeholders and the values attached to hydrological ecosystem services (Zhang et al., 2013). Continuous simulation watersheds models able to capture short and long-term temporal variability are useful for analysing the temporal scales of service provision.

Our objective, therefore, is to present a spatially explicit modelling approach, which distinguishes between service capacity and service flow, to map and quantify hydrological ecosystem services in order to set up ecosystem accounts. The services we model and account for are crop water supply, household water supply (groundwater supply and surface water supply), water purification, and soil erosion control. In our approach, a grid-based setup of a modified Soil Water and Assessment Tool (SWAT), SWAT Landscape, is first used to simulate the watershed ecohydrology. The model is then calibrated and validated. Model outputs are post-processed based on indicator requirements that are consistent with an ecosystem accounting framework to map and quantify hydrological ecosystem services and to set up biophysical ecosystem accounts. We demonstrate this approach in the Upper Ouémé watershed in Benin. This case-study area was selected because of a relatively high data availability (Judex and Thamm, 2008; AMMA-CATCH, 2014). It is also a microcosm of sub-Saharan Africa, where large sections of the population depend on smallholder rainfed agriculture for their livelihood and where there is increasing land degradation and competition for scarce water resources.

HESSD

12, 3477–3526, 2015

Modelling ecosystem services for ecosystem accounting

C. Duku et al.

[Title Page](#)

[Abstract](#)

[Introduction](#)

[Conclusions](#)

[References](#)

[Tables](#)

[Figures](#)

[⏪](#)

[⏩](#)

[◀](#)

[▶](#)

[Back](#)

[Close](#)

[Full Screen / Esc](#)

[Printer-friendly Version](#)

[Interactive Discussion](#)



2 Description of case-study area

The Upper Ouémé watershed as depicted in Fig. 1 is located in central Benin covering an area of approximately 14 500 km². The natural vegetation is a mosaic of savannah woodland and small forest islands with a protected forest area of about 2420 km² within the watershed. Smallholder rainfed agriculture is the major economic activity and is supported by suitable climatic conditions that are characterized by a unimodal rainfall season from May to October of about 1250 mm per year. There is low demographic density (28 inhabitants km⁻²) within the watershed with a population of about 400 000 (Judex and Thamm, 2008). However, the population is growing rapidly (about 4% per annum) due to migrants coming from different parts of the country and other neighbouring countries to farm. Rapid population growth has caused the expansion of agricultural areas and led to both deforestation and increasing scarcity of agricultural land (Judex and Thamm, 2008) accompanied by increasing soil degradation due to shortening of the fallow period (Giertz et al., 2012). As a result, inland valley lowlands are increasingly converted for crop production due to their higher water availability, lower soil fragility and higher fertility compared to upland areas (Giertz et al., 2012; Rodenburg et al., 2014).

3 Methods

3.1 Modelling watershed ecohydrology

3.1.1 Model selection

The SWAT model (Arnold et al., 1998) has a comparative advantage in integrated assessment modelling of ecohydrological interactions that underpin hydrological ecosystem services provision (Vigerstol and Aukema, 2011). These advantages include (i) the use of physically based data (such as soil properties, vegetation,

HESSD

12, 3477–3526, 2015

Modelling ecosystem services for ecosystem accounting

C. Duku et al.

Title Page

Abstract

Introduction

Conclusions

References

Tables

Figures

⏪

⏩

◀

▶

Back

Close

Full Screen / Esc

Printer-friendly Version

Interactive Discussion



Modelling ecosystem services for ecosystem accounting

C. Duku et al.

Title Page

Abstract

Introduction

Conclusions

References

Tables

Figures

⏪

⏩

◀

▶

Back

Close

Full Screen / Esc

Printer-friendly Version

Interactive Discussion



spatial representation of landscape patterns. Grid-based simulations of the SWAT Landscape model were conducted for the period 1999–2012. The first two years served as model warm-up period. After grid-based simulations, the model was re-calibrated and re-validated manually with the same observed monthly streamflow data as well as observed sediment and organic nitrogen loads. Three quantitative statistics recommended by Moriasi et al. (2007) were selected to evaluate model performance: Nash–Sutcliffe efficiency (NSE), percent bias (PBIAS), and ratio of the root mean square error to the standard deviation (SD) of measured data (RSR).

3.2 Spatial assessment of hydrological ecosystem services

Several factors determine if an ecohydrological process constitutes a hydrological ecosystem service. These include the presence of beneficiaries (Boyd and Banzhaf, 2007), spatial accessibility (Fisher et al., 2009), management pressure (Schröter et al., 2014) amongst others. To make this distinction evident, a capacity and flow approach was employed to simulate these services. Four hydrological ecosystem services vital for crop production in croplands (uplands and inland valley lowlands), and household water consumption were selected based on stakeholder consultations, literature review and data availability. For each service, two appropriate indicators were selected to model service flow and service capacity. Computations were made for each grid cell enabling the model to reflect spatial differences in service flow and in service capacity. The selected hydrological ecosystem services and their service flow and service capacity indicators are shown in Table 2.

3.2.1 Crop water supply

An important hydrological ecosystem service input to crop production in rainfed agricultural systems is the provision of plant available water by ecohydrological processes that affect the soil water balance (Pattanayak and Kramer, 2001; IWMI, 2007; Zang et al., 2012). Crop water stress is a major limitation to crop production

the end of a day, the soil moisture content at the beginning of a day gives an indication of the total amount of water available for plant uptake.

$$S_c = \left(\sum_{i=1}^n [(SW_{INIT})_1, (SW_{INIT})_2, \dots, (SW_{INIT})_n] \right) / n, \quad (3)$$

where S_c is the service capacity (mm day^{-1}), SW_{INIT} is the soil moisture content at the beginning of each day (mm), and n is the number of days in the growing period.

3.2.2 Household water supply

This hydrological ecosystem service refers to the amount of water extracted before treatment for household consumption (drinking and non-drinking purposes) (EC et al., 2013). This measurement boundary excluded other sources of water (e.g. tap water) where economic agents or inputs (e.g. water treatment facilities) were used to modify the state of the water resources before household consumption. We acknowledge that inflows to reservoirs of water distribution and processing facilities that deliver tap water can be considered as a hydrological ecosystem service. However, we excluded this from our study. This is because in our study area, the population obtain about 90% of their drinking water needs from groundwater, with about 5% from small lakes, ponds and rivers collectively referred to in this study as surface water (Judex and Thamm, 2008). A distinction was made between service capacity and service flow from groundwater, and service capacity and service flow from surface water.

To model service flow from groundwater and surface water, data on water consumption per capita, village population and water access for about 200 communities within the watershed were used. These data had been extracted from the 2002 national census (INSAE, 2003) and from household surveys in the study area (Hadjer et al., 2005). The data represented household water consumption at the village level and lacked information on the actual points of extraction. Therefore, in modelling the service flow, we assumed that there is a positive spatial correlation between points

Modelling ecosystem services for ecosystem accounting

C. Duku et al.

Title Page

Abstract

Introduction

Conclusions

References

Tables

Figures

⏪

⏩

◀

▶

Back

Close

Full Screen / Esc

Printer-friendly Version

Interactive Discussion



least 90 days whereas less than 25 % (approximately 36 000 ha) of upland agricultural areas recorded mean seasonal values of service flow of at least 90 days.

The spatial distribution of mean annual values of service capacity and service flow of groundwater supply and surface water supply are shown in Figs. 5 and 6 respectively. Groundwater is the major source of water for household consumption (drinking and non-drinking purposes) with the service flow (groundwater extraction) significantly higher than service flow of surface water supply (surface water extraction). High service flows of groundwater supply are concentrated in the most populous towns in the watershed. However, service flows in Parakou, which is the most populous city in the watershed, are relatively lower than other areas such as Djougou. This is because the population in Parakou depend mainly on tap water sources. Service capacity of groundwater supply exhibited high spatial variability. High values of service capacity were concentrated in the south-western part of the watershed. For service capacity of surface water supply, Fig. 6 shows areas with a high propensity for generating water yield. These areas, referred to as Hydrologically Sensitive Areas (HSAs) (Agnew et al., 2006), were not peculiar to a particular land cover type. They occurred in almost all land cover types. They occurred more frequently in savannah woodland and shrubland because approximately 80 % of the total watershed area is either one of this land cover type.

Water purification modelled as denitrification is essential to control the quantities of nitrate available for leaching and contaminating groundwater resources (Jarvis, 2000; Jahangir et al., 2012). Service capacity was measured as the percentage of nitrate that is denitrified and service flow was the rate of denitrification. The spatial distribution of mean annual values of service capacity and service flow of water purification are distinctly concentrated in the northern and eastern parts of the watershed with the south-western parts recording zero values (Fig. 7). All barren land cover types also recorded zero values of service capacity and service flow. The zero values recorded are a result of the lack of soil saturation conditions and not the lack of nitrate availability. Soil saturation induces soil anaerobic conditions required for denitrification

Modelling ecosystem services for ecosystem accounting

C. Duku et al.

Title Page

Abstract

Introduction

Conclusions

References

Tables

Figures



Back

Close

Full Screen / Esc

Printer-friendly Version

Interactive Discussion



Modelling ecosystem services for ecosystem accounting

C. Duku et al.

Title Page

Abstract

Introduction

Conclusions

References

Tables

Figures



Back

Close

Full Screen / Esc

Printer-friendly Version

Interactive Discussion



However, the mean values for service capacity varied depending on the biophysical environment of an SEAU. For example, whereas the Beterou-Ouest SEAU is the largest, the highest mean service capacity of groundwater supply was recorded in Sarmanga and Terou-Igbomakoro SEAUs. This signifies that the rate of groundwater recharge is highest in Sarmanga and Terou-Igbomakoro SEAUs. The service flow table reveals that the ecohydrological conditions required for denitrification (water purification) do not occur in Aguimo, Terou-Igbomakoro, Terou-Wanou, and Wewe SEAUs. However, a total of 77 000 m³ of groundwater was extracted in Terou-Igbomakoro and Wewe SEAUs in 2012. In Aguimo and Terou-Wanou SEAUs, there is currently no groundwater extraction. For crop water supply, the tables also show the total area of land currently under crop cultivation in each SEAU. Upland agricultural areas provide over 99 % of total cropland area. The SEAUs with the largest upland agricultural areas did not necessarily record the highest service flow. For example, the highest service flow was recorded in Sarmanga and Terou-Igbomakoro. This signifies that maize cultivation in these SEAUs is less prone to water stress than in any other SEAUs.

Temporal analysis of ecosystem accounts makes it possible to track ecosystem changes and measure the degree of sustainability, degradation or resilience. Decreasing capacity of ecosystems to sustain human welfare over time is a measure of ecosystem degradation (EC et al., 2013). Figure 9 shows the results of trend analysis statistical tests of service capacities at the SEAU level. Decreasing trends were observed in crop water supply (in upland agricultural areas) in all the SEAUs except Terou-Igbomakoro. In the Terou-Igbomakoro SEAU there was no trend observed in service capacity of crop water supply. The results shown in Fig. 9a are of the five SEAUs that recorded the highest slope as measured with the Mann–Kendall statistic. For inland valley rice fields, a trend in service capacity of crop water supply was observed in only the Terou-Wanou SEAU, where a decreasing trend with a rate of change of 1002 m³ day⁻¹ as measured by the Sen's Slope was recorded. Increasing trends were observed in service capacities of water purification, groundwater supply

In this study, we also detected trends in changes in the capacity of watershed ecosystems to provide service flows. Detection of trends in service capacity is the first step towards measuring degradation or resilience. To determine the causes of these changes in service capacity will require further analysis such as detailed correlation analysis between each hydrological ecosystem service and the suite of underlying ecohydrological processes. This was, however, beyond the scope of this study.

6 Conclusion

There are various components involved in ecosystem service delivery that need to be measured in order to better understand the full dynamics of service provision and to devise sustainable management options. Key amongst these components are service capacity and service flow. Empirical distinction of service capacity and service flow of ecosystem services is a distinguishing feature of ecosystem accounting. Our analyses show that integrating hydrological ecosystem services in an ecosystem accounting framework provides relevant information on watershed ecosystems and hydrological ecosystem services at appropriate scales suitable for decision-making. They show that for watershed management, land use planning and land management, measurement of service flow should go hand in hand with managing service capacity. For hydrological ecosystem services in which high service capacity areas and high service flow areas are not spatially coincident, such empirical distinction and separate spatial characterization are much more crucial. Ecohydrological modelling to support ecosystem accounting, therefore, requires appropriate decisions regarding model process inclusion, physical and mathematical representation, spatial heterogeneity, temporal resolution, and model accuracy.

We have shown that despite the non-linear complex interactions among several ecohydrological processes that each relies on a suite of ecosystem components; empirically, it is feasible to distinguish between service capacity and service flow of hydrological ecosystem services. The service flows we modelled are the contributions

Modelling ecosystem services for ecosystem accounting

C. Duku et al.

[Title Page](#)

[Abstract](#)

[Introduction](#)

[Conclusions](#)

[References](#)

[Tables](#)

[Figures](#)

[⏪](#)

[⏩](#)

[◀](#)

[▶](#)

[Back](#)

[Close](#)

[Full Screen / Esc](#)

[Printer-friendly Version](#)

[Interactive Discussion](#)



Modelling ecosystem services for ecosystem accounting

C. Duku et al.

Title Page

Abstract

Introduction

Conclusions

References

Tables

Figures



Back

Close

Full Screen / Esc

Printer-friendly Version

Interactive Discussion



in time and space of ecosystems to productive and consumptive human activities leading to human benefits, whereas the service capacities we modelled reflect ecosystem condition and extent at a point in time, and the resulting potential to provide service flows. We demonstrated our approach by using a grid-based setup of a modified SWAT model, SWAT Landscape, to map and quantify four hydrological ecosystem services vital to human well-being in the Upper Ouémé watershed. We set up ecosystem accounting tables for both service capacity and service flow and analysed trends in service capacities. For each hydrological ecosystem service, we were able to identify Subwatershed Ecosystem Accounting Units (SEAUs) where either service capacity or service flow is concentrated. We were also able to identify trends in changes in service capacity of hydrological ecosystem services for some SEAUs. Our approach can be extended and applied to other watersheds because it is based on the robust SWAT model, which has been tested extensively in different watersheds and landscapes.

Author contributions. C. Duku, L. Hein and S. J. Zwart conceived and designed the study; H. Rathjens developed the grid-based model code; C. Duku performed the simulations and analyses; C. Duku and L. Hein prepared the manuscript with contributions from S. J. Zwart and H. Rathjens.

Acknowledgements. This research was conducted at Wageningen University as part of the project “Realizing the potential of inland valley lowlands in sub-Saharan Africa while maintaining their environmental services” (RAP-IV). The project is implemented by the Africa Rice Center and its national partners and is funded by the European Commission through the International Fund for Agricultural Development (IFAD). We thank the IMPETUS project in Benin for making data available for this research through their public geoportal. We are grateful to Christophe Peugeot and the AMMA-CATCH regional observing system in Benin for providing us precipitation and streamflow data. Finally, we thank Aymar Bossa and Bernd Diekkrüger for providing us sediment and nitrogen data for model calibration.

References

- Abbaspour, K., Yang, J., Reichert, P., Vejdani, M., Haghghat, S., and Srinivasan, R.: SWAT-CUP, SWAT Calibration and Uncertainty Programs, Swiss Federal Institute of Aquatic Science and Technology (EAWAG), Zurich, Switzerland, 2008.
- 5 Agnew, L. J., Lyon, S. W., Gerard-Marchant, P., Collins, V. B., Lembo, A. J., Steenhuis, T. S., and Walter, M. T.: Identifying hydrologically sensitive areas: bridging the gap between science and application, *J. Environ. Manage.*, 78, 63–76, doi:10.1016/j.jenvman.2005.04.021, 2006.
- Allen, R. G., Pereira, S. L., Raes, D., and Smith, M.: Irrigation and Drainage Paper 56, FAO, Rome, Italy, 1998.
- 10 AMMA-CATCH Database: available at: <http://bd.amma-catch.org/amma-catch2/main.jsf> (last access: 28 May 2014), 2014.
- Arnold, J. G., Srinivasan, R., Muttiah, R. S., and Williams, J. R.: Large area hydrologic modeling and assessment – Part I: Model development, *J. Am. Water Resour. As.*, 34, 73–89, 1998.
- Arnold, J. G., Muttiah, R. S., Srinivasan, R., and Allen, P. M.: Regional estimation of base
15 flow and groundwater recharge in the Upper Mississippi river basin, *J. Hydrol.*, 227, 21–40, doi:10.1016/S0022-1694(99)00139-0, 2000.
- Arnold, J. G., Allen, P. M., Volk, M., Williams, J. R., and Bosch, D. D.: Assessment of different representations of spatial variability on swat model performance, *T. ASABE*, 53, 1433–1443, 2010.
- 20 Arnold, J. G., Kiniry, J. R., Srinivasan, R., Williams, J. R., Haney, E. B., and Neitsch, S. L.: Soil Water and Assessment Tool Input/Output Documentation Version 2012, Texas Water Resources Institute, College Station, Texas, USA, 2013.
- Bosch, D. D., Arnold, J. G., Volk, M., and Allen, P. M.: Simulation of a low-gradient coastal plain watershed using the swat landscape model, *T. ASABE*, 53, 1445–1456, 2010.
- 25 Boyd, J. and Banzhaf, S.: What are ecosystem services? The need for standardized environmental accounting units, *Ecol. Econ.*, 63, 616–626, doi:10.1016/j.ecolecon.2007.01.002, 2007.
- Boyer, E. W., Alexander, R. B., Parton, W. J., Li, C. S., Butterbach-Bahl, K., Donner, S. D., Skaggs, R. W., and Del Gross, S. J.: Modeling denitrification in terrestrial and
30 aquatic ecosystems at regional scales, *Ecol. Appl.*, 16, 2123–2142, doi:10.1890/1051-0761(2006)016[2123:Mditaa]2.0.Co;2, 2006.

HESSD

12, 3477–3526, 2015

Modelling ecosystem services for ecosystem accounting

C. Duku et al.

Title Page

Abstract

Introduction

Conclusions

References

Tables

Figures

⏪

⏩

◀

▶

Back

Close

Full Screen / Esc

Printer-friendly Version

Interactive Discussion



Modelling ecosystem services for ecosystem accounting

C. Duku et al.

Title Page

Abstract

Introduction

Conclusions

References

Tables

Figures

⏪

⏩

◀

▶

Back

Close

Full Screen / Esc

Printer-friendly Version

Interactive Discussion



Brauman, K. A., Daily, G. C., Duarte, T. K., and Mooney, H. A.: The nature and value of ecosystem services: An overview highlighting hydrologic services, *Annual Review of Environment and Resources*, 32, 67–98, doi:10.1146/annurev.energy.32.031306.102758, 2007.

5 Bronstert, A. and Plate, E. J.: Modelling of runoff generation and soil moisture dynamics for hillslopes and micro-catchments, *J. Hydrol.*, 198, 177–195, doi:10.1016/S0022-1694(96)03306-9, 1997.

Butterbach-Bahl, K. and Dannenmann, M.: Denitrification and associated soil N₂O emissions due to agricultural activities in a changing climate, *Current Opinion in Environmental Sustainability*, 3, 389–395, doi:10.1016/j.cosust.2011.08.004, 2011.

10 Carlisle, D. M., Wolock, D. M., and Meador, M. R.: Alteration of streamflow magnitudes and potential ecological consequences: a multiregional assessment, *Front. Ecol. Environ.*, 9, 264–270, doi:10.1890/100053, 2011.

D’Odorico, P., Laio, F., Porporato, A., Ridolfi, L., Rinaldo, A., and Iturbe, I. R.: Ecohydrology of terrestrial ecosystems, *Bioscience*, 60, 898–907, doi:10.1525/bio.2010.60.11.6, 2010.

15 Easton, Z. M., Fuka, D. R., Walter, M. T., Cowan, D. M., Schneiderman, E. M., and Steenhuis, T. S.: Re-conceptualizing the soil and water assessment tool (SWAT) model to predict runoff from variable source areas, *J. Hydrol.*, 348, 279–291, doi:10.1016/j.jhydrol.2007.10.008, 2008.

20 EC, Organisation for Economic Co-operation and Development, United Nations, and World Bank: System of Environmental-Economic Accounting 2012, Experimental Ecosystem Accounting, New York, USA, 2013.

Edens, B. and Hein, L.: Towards a consistent approach for ecosystem accounting, *Ecol. Econ.*, 90, 41–52, doi:10.1016/j.ecolecon.2013.03.003, 2013.

25 Ennaanay, D.: Impacts of Land Use Changes on the Hydrologic Regime in the Minnesota River Basin, Major: Water Resources Science, 2006, University of Minnesota, USA, 2006.

ESRI: ArcGIS version 10.1, Redlands, California, USA, 2012.

Fisher, B., Turner, R. K., and Morling, P.: Defining and classifying ecosystem services for decision making, *Ecol. Econ.*, 68, 643–653, doi:10.1016/j.ecolecon.2008.09.014, 2009.

30 Galloway, J. N., Aber, J. D., Erisman, J. W., Seitzinger, S. P., Howarth, R. W., Cowling, E. B., and Cosby, B. J.: The nitrogen cascade, *Bioscience*, 53, 341–356, doi:10.1641/0006-3568(2003)053[0341:Tnc]2.0.Co;2, 2003.

Modelling ecosystem services for ecosystem accounting

C. Duku et al.

[Title Page](#)

[Abstract](#)

[Introduction](#)

[Conclusions](#)

[References](#)

[Tables](#)

[Figures](#)

[⏪](#)

[⏩](#)

[◀](#)

[▶](#)

[Back](#)

[Close](#)

[Full Screen / Esc](#)

[Printer-friendly Version](#)

[Interactive Discussion](#)



- Schröter, M., Barton, D. N., Remme, R. P., and Hein, L.: Accounting for capacity and flow of ecosystem services: a conceptual model and a case study for Telemark, Norway, *Ecol. Indic.*, 36, 539–551, doi:10.1016/j.ecolind.2013.09.018, 2014.
- Seppelt, R., Dormann, C. F., Eppink, F. V., Lautenbach, S., and Schmidt, S.: A quantitative review of ecosystem service studies: approaches, shortcomings and the road ahead, *J. Appl. Ecol.*, 48, 630–636, doi:10.1111/j.1365-2664.2010.01952.x, 2011.
- Shaxson, F. and Barber, R.: Optimizing soil moisture for plant production. The significance of soil porosity, *FAO Soils Bulletin*, *FAO Soils Bulletin*, 79, Rome, Italy, 2003.
- Stoneham, G., O’Keefe, A., Eigenraam, M., and Bain, D.: Creating physical environmental asset accounts from markets for ecosystem conservation, *Ecol. Econ.*, 82, 114–122, doi:10.1016/j.ecolecon.2012.06.017, 2012.
- TEEB: The economics of ecosystems and biodiversity. Mainstreaming the economics of nature. A synthesis of the approach, conclusions and recommendations of TEEB, available at: www.teeb.org, 2010.
- Terrado, M., Acuna, V., Ennaanay, D., Tallis, H., and Sabater, S.: Impact of climate extremes on hydrological ecosystem services in a heavily humanized Mediterranean basin, *Ecol. Indic.*, 37, 199–209, doi:10.1016/j.ecolind.2013.01.016, 2014.
- Tetzlaff, D., Carey, S. K., Laudon, H., and McGuire, K.: Catchment processes and heterogeneity at multiple scales-benchmarking observations, conceptualization and prediction Preface, *Hydrol. Process.*, 24, 2203–2208, doi:10.1002/Hyp.7784, 2010.
- Tilman, D., Cassman, K. G., Matson, P. A., Naylor, R., and Polasky, S.: Agricultural sustainability and intensive production practices, *Nature*, 418, 671–677, doi:10.1038/nature01014, 2002.
- Turpie, J. K., Marais, C., and Blignaut, J. N.: The working for water programme: evolution of a payments for ecosystem services mechanism that addresses both poverty and ecosystem service delivery in South Africa, *Ecol. Econ.*, 65, 788–798, doi:10.1016/j.ecolecon.2007.12.024, 2008.
- UN, European Commission, International Monetary Fund, Organisation for Economic Co-operation and Development, and World Bank: *System of National Accounts 2008*, New York, 2009.
- UNSD: *System for Environmental-Economic Accounting for Water*, Department of Economic and Social Affairs, Statistics Division, United Nations, New York, USA, 2012.

Northwest China, Hydrol. Earth Syst. Sci., 16, 2859–2870, doi:10.5194/hess-16-2859-2012, 2012.

Zhang, Y., Holzapfel, C., and Yuan, X.: Scale-dependent ecosystem service, in: Ecosystem Services in Agricultural and Urban Landscapes, edited by: Wratten, S., Sandhu, H., Cullen, R., and Costanza, R., John Wiley & Sons, Oxford, UK, 105–121, 2013.

5

HESSD

12, 3477–3526, 2015

Modelling ecosystem services for ecosystem accounting

C. Duku et al.

Title Page

Abstract

Introduction

Conclusions

References

Tables

Figures



Back

Close

Full Screen / Esc

Printer-friendly Version

Interactive Discussion



Modelling ecosystem services for ecosystem accounting

C. Duku et al.

Table 2. Overview of selected hydrological ecosystem services and associated service flow and service capacity indicators (GP is growing period).

Hydrological ecosystem service	Service flow indicator	Service capacity indicator
1. Crop water supply	Total number of days during the growing period in which there was no water stress (days GP ⁻¹)	Average plant available soil moisture content over the growing period (m ³ ha ⁻¹ day ⁻¹)
2. Household water supply		
a. Groundwater supply	Amount of groundwater extracted (m ³ ha ⁻¹ yr ⁻¹)	Groundwater recharge (m ³ ha ⁻¹ yr ⁻¹)
b. Surface water supply	Amount of surface water extracted (m ³ ha ⁻¹ yr ⁻¹)	Water yield (m ³ ha ⁻¹ yr ⁻¹)
3. Water purification	Rate of denitrification (kg ha ⁻¹ yr ⁻¹)	Denitrification efficiency (% denitrified)
4. Soil erosion control	Amount of sediment retained (metric tons ha ⁻¹ yr ⁻¹)	Maximum potential soil erosion (metric tons ha ⁻¹ yr ⁻¹)

Title Page

Abstract

Introduction

Conclusions

References

Tables

Figures

⏪

⏩

◀

▶

Back

Close

Full Screen / Esc

Printer-friendly Version

Interactive Discussion



Modelling ecosystem services for ecosystem accounting

C. Duku et al.

Table 4. Biophysical ecosystem account for service capacity at the SEAU level in the Upper Ouémé watershed in 2012 (GP is growing period; SD is standard deviation).

Subwatershed Ecosystem Accounting Unit (SEAU)	Hydrological ecosystem service											
	Crop water supply				Household water supply				Water purification		Soil erosion control	
	Upland agricultural areas		Inland valley rice fields		Groundwater		Surface water		Total N added (10^3 kg)	% N denitrified	Total (10^2 metric tons yr^{-1})	Mean (SD) ($\text{kg ha}^{-1} \text{yr}^{-1}$)
	Area (10^3 ha)	Total ($10^6 \text{ m}^3 \text{ day}^{-1}$)	Area (ha)	Total ($10^3 \text{ m}^3 \text{ day}^{-1}$)	Total ($10^6 \text{ m}^3 \text{ yr}^{-1}$ recharge)	Mean (SD) ($10^3 \text{ m}^3 \text{ ha}^{-1} \text{ yr}^{-1}$ recharge)	Total ($10^6 \text{ m}^3 \text{ yr}^{-1}$ water yield)	Mean (SD) ($10^3 \text{ m}^3 \text{ ha}^{-1} \text{ yr}^{-1}$ water yield)				
Affon-Pont	20.2	15.6	200	519	121	26 (26)	624	133 (90)	2719	30	5.2	44 (74)
Aguiro	0.3	0.3	0	0	58	37 (28)	255	161 (112)	589	0	2.6	65 (102)
Avail-Sani	4.0	5.0	0	0	114	38 (20)	458	151 (89)	1370	36	3.5	45 (85)
Barerou	33.4	28.5	100	176	244	29 (20)	1328	156 (101)	4707	11	18.5	87 (101)
Beterou-Ouest	54.3	46.6	425	727	615	38 (30)	2526	155 (99)	8550	19	22.9	56 (102)
Bori	12.0	11.6	0	0	185	29 (20)	1082	168 (97)	3138	26	6.4	40 (79)
HVO	7.0	7.8	50	53	206	43 (40)	638	133 (80)	1953	15	8.3	69 (93)
Sarmanga	9.7	10.7	175	449	304	57 (37)	809	152 (82)	2382	13	4.5	34 (42)
Terouo-Igbomakoro	4.0	4.7	50	174	222	57 (36)	591	151 (93)	1561	0	4.9	51 (91)
Terou-Wanou	0.8	0.9	25	21	73	54 (22)	170	126 (58)	514	0	2.5	74 (90)
Wewe	4.1	4.6	75	188	48	40 (33)	213	177 (117)	638	0	1.8	61 (182)
Total	149.8	136.3	1100	2307	2190	–	8694	–	28 121	–	81.1	–

Modelling ecosystem services for ecosystem accounting

C. Duku et al.

Table 5. Biophysical ecosystem account for service flow at the SEAU level in the Upper Ouémé watershed in 2012 (GP is length of growing period; Upland agricultural areas had a GP of 103 days; Inland valley rice fields had a GP of 123 days; SD is standard deviation).

Subwatershed Ecosystem Accounting Unit (SEAU)	Hydrological ecosystem service									
	Crop water supply				Household water supply		Water purification		Soil erosion control	
	Upland agricultural areas		Inland valley rice fields		Groundwater	Surface water				
	Area (10 ³ ha)	Mean (SD) (days GP ⁻¹)	Area (ha)	Mean (SD) (days GP ⁻¹)	Total (10 ³ m ³ yr ⁻¹ water extracted)	Total (10 ³ m ³ yr ⁻¹ water extracted)	Total (10 ³ kg N yr ⁻¹ denitrified)	Mean (SD) (kg ha ⁻¹ yr ⁻¹ denitrified)	Total (10 ³ metric tons yr ⁻¹)	Mean (SD) (kg ha ⁻¹ yr ⁻¹)
Affon-Pont	20.2	59 (30)	200	123 (0)	123	65	810	6.9 (10)	4.4	38 (67)
Aguimo	0.3	52 (35)	0	–	0	0	0	0.0 (0)	2.3	58 (92)
Aval-Sani	4.0	64 (29)	0	–	8	0.2	498	6.5 (7)	3.2	42 (81)
Barerou	33.4	63 (31)	100	107 (17)	510	64	503	2.4 (6)	15.9	75 (92)
Beterou-Ouest	54.3	59 (31)	425	115 (22)	1124	219	1613	4.0 (9)	18.9	46 (90)
Bori	12.0	65 (32)	0	–	196	30	815	5.1 (7)	5.4	33 (67)
HVO	7.0	56 (32)	50	88 (35)	71	37	297	2.5 (6)	7.0	59 (79)
Sarmanga	9.7	69 (34)	175	119 (8)	532	66	317	2.3 (5)	4.0	30 (39)
Teroou-Igbomakoro	4.0	69 (34)	50	123 (0)	95	36	0	0.0 (0)	4.4	45 (85)
Terou-Wanou	0.8	45 (35)	25	92 (0)	0	0	0	0.0 (0)	2.2	65 (83)
Wewe	4.1	63 (31)	75	107 (23)	41	41	0	0.0 (0)	1.5	51 (178)
Total	149.8	–	1100	–	2700	558.2	4853	–	69.2	–

[Title Page](#)
[Abstract](#)
[Introduction](#)
[Conclusions](#)
[References](#)
[Tables](#)
[Figures](#)
[Back](#)
[Close](#)
[Full Screen / Esc](#)
[Printer-friendly Version](#)
[Interactive Discussion](#)

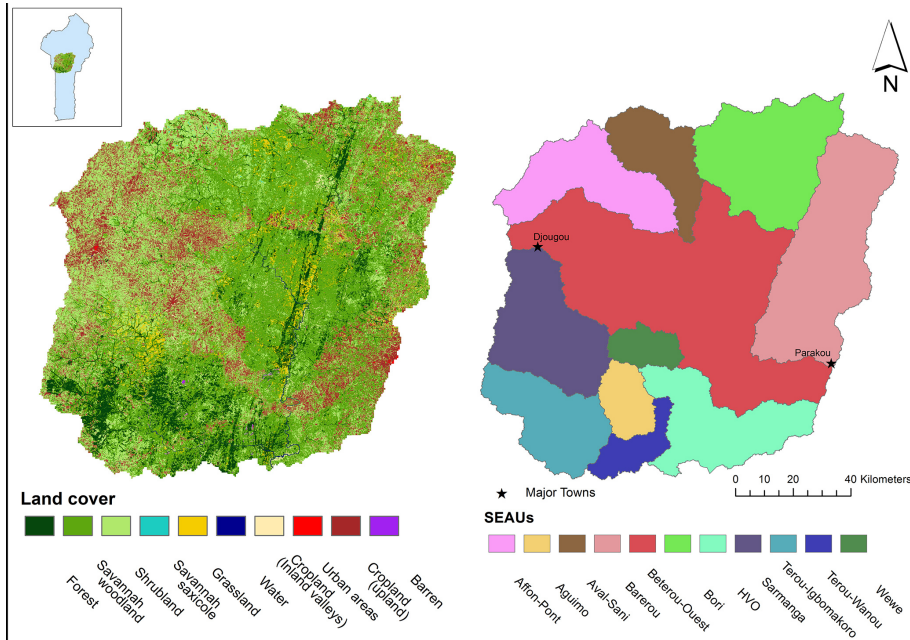



Figure 1. Land cover and Subwatershed Ecosystem Accounting Units (SEAUs) of the Upper Ouémé watershed. Land cover data adapted from Judex and Thamm (2008).

HESSD

12, 3477–3526, 2015

Modelling ecosystem services for ecosystem accounting

C. Duku et al.

Title Page	
Abstract	Introduction
Conclusions	References
Tables	Figures
◀	▶
◀	▶
Back	Close
Full Screen / Esc	
Printer-friendly Version	
Interactive Discussion	



Modelling ecosystem services for ecosystem accounting

C. Duku et al.

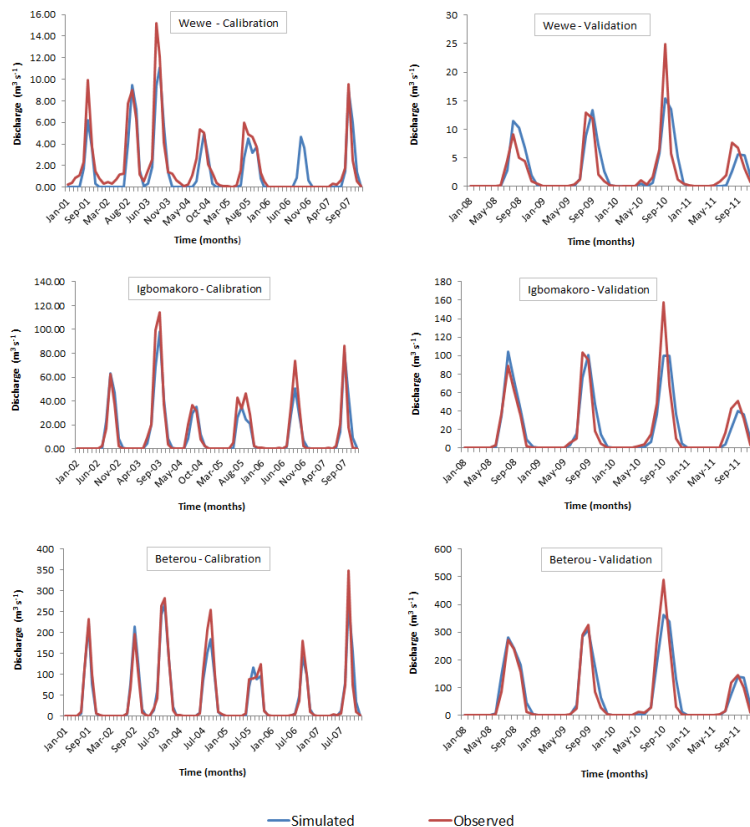


Figure 2. Comparing simulated and observed streamflow for three monitoring stations with varying drainage areas; Wewe, 297 km²; Igbo, 2309 km²; Beterou, 10 046 km².

Title Page

Abstract

Introduction

Conclusions

References

Tables

Figures



Back

Close

Full Screen / Esc

Printer-friendly Version

Interactive Discussion



Modelling ecosystem services for ecosystem accounting

C. Duku et al.

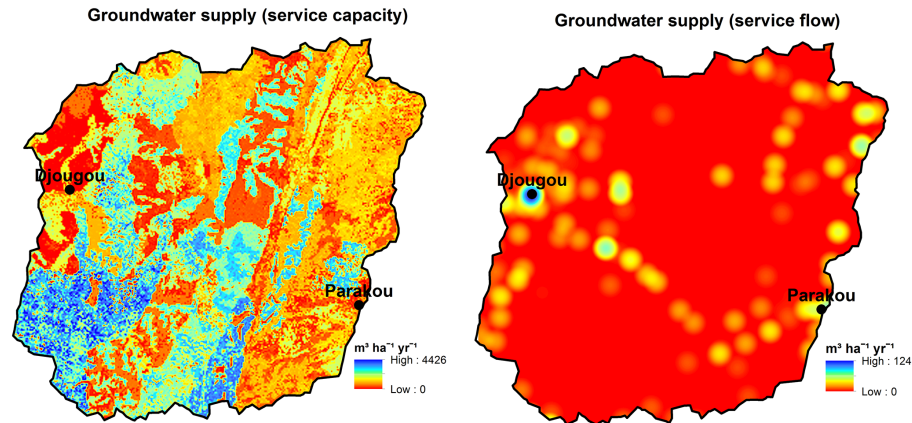


Figure 5. Spatial distribution of mean annual values of service capacity and service flow of groundwater supply in the Upper Ouémé watershed from the year 2001 to 2012.

[Title Page](#)[Abstract](#)[Introduction](#)[Conclusions](#)[References](#)[Tables](#)[Figures](#)[⏪](#)[⏩](#)[◀](#)[▶](#)[Back](#)[Close](#)[Full Screen / Esc](#)[Printer-friendly Version](#)[Interactive Discussion](#)

Modelling ecosystem services for ecosystem accounting

C. Duku et al.

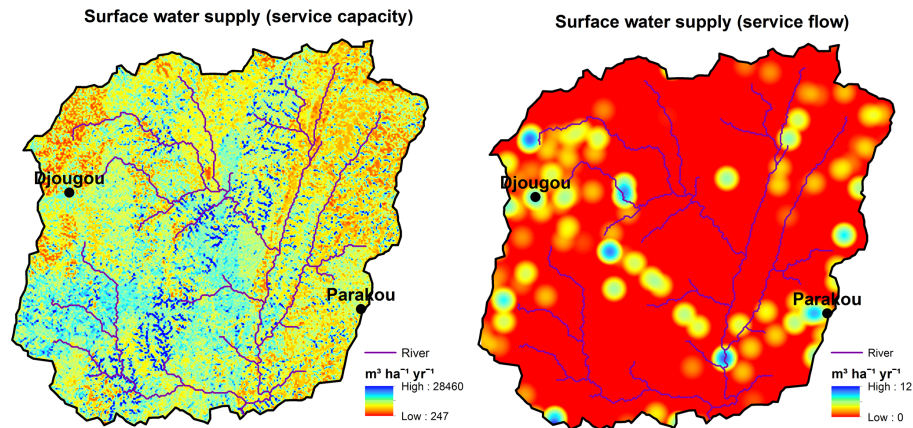


Figure 6. Spatial distribution of mean annual values of service capacity and service flow of surface water supply in the Upper Ouémé watershed from the year 2001 to 2012.

Modelling ecosystem services for ecosystem accounting

C. Duku et al.

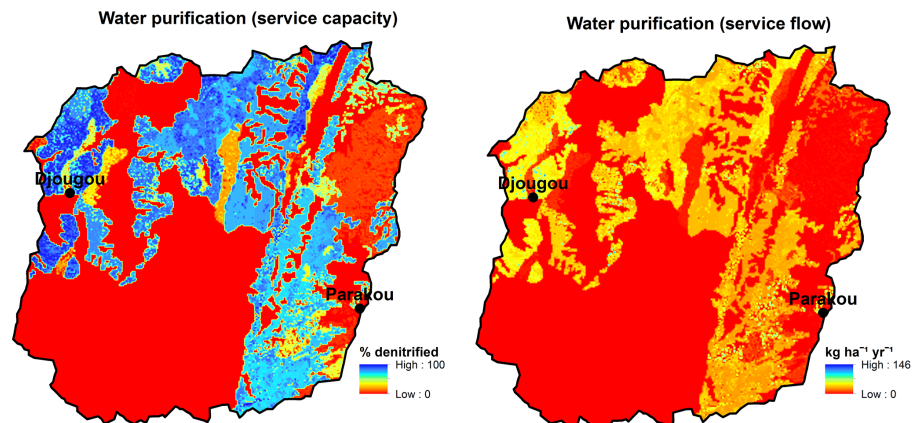


Figure 7. Spatial distribution of mean annual values of service capacity and service flow of water purification in the Upper Ouémé watershed from the year 2001 to 2012.

[Title Page](#)[Abstract](#)[Introduction](#)[Conclusions](#)[References](#)[Tables](#)[Figures](#)[⏪](#)[⏩](#)[◀](#)[▶](#)[Back](#)[Close](#)[Full Screen / Esc](#)[Printer-friendly Version](#)[Interactive Discussion](#)

Modelling ecosystem services for ecosystem accounting

C. Duku et al.

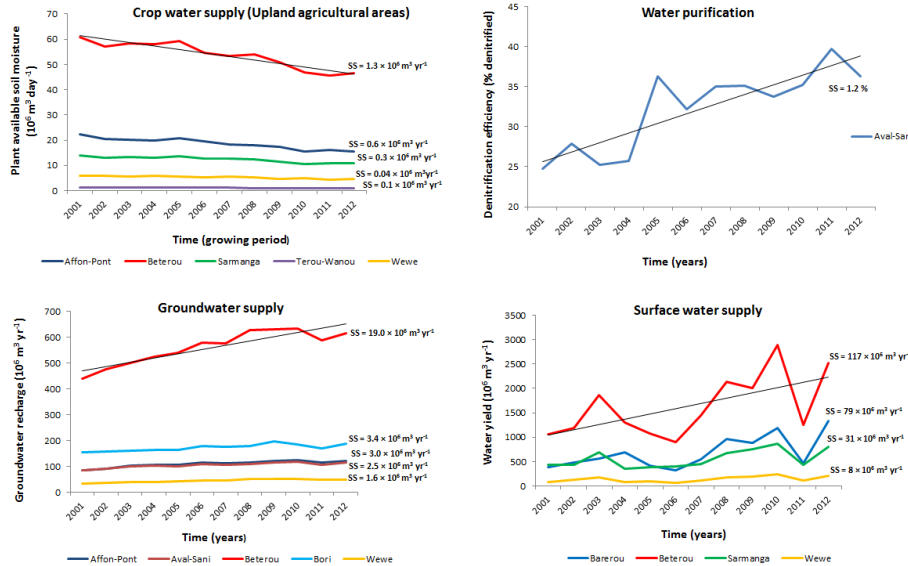


Figure 9. Trends in service capacity of hydrological ecosystem services at the SEAU level in the Upper Ouémé watershed (SS is Sen’s Slope estimator, which is a measure of the magnitude of change of a trend). For each graph, a single trend line is drawn solely to illustrate the direction of trend.

Title Page

Abstract

Introduction

Conclusions

References

Tables

Figures

⏪

⏩

◀

▶

Back

Close

Full Screen / Esc

Printer-friendly Version

Interactive Discussion

