

Supplement of Hydrol. Earth Syst. Sci., 18, 5169–5179, 2014
<http://www.hydrol-earth-syst-sci.net/18/5169/2014/>
doi:10.5194/hess-18-5169-2014-supplement
© Author(s) 2014. CC Attribution 3.0 License.

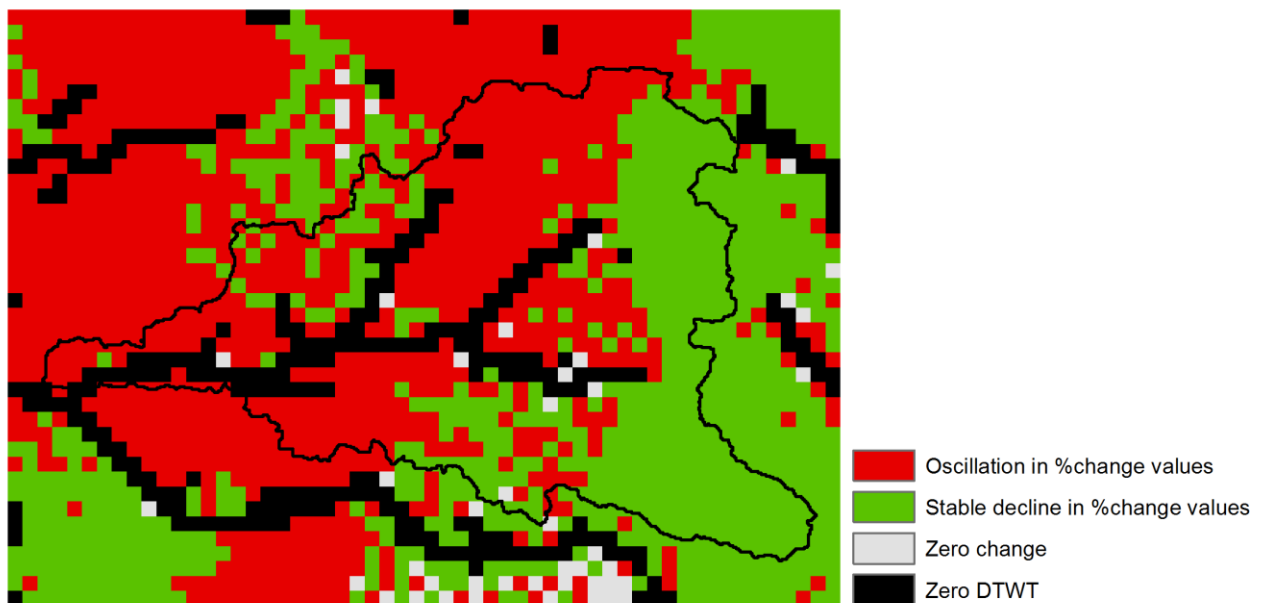


Supplement of

Technical Note: Reducing the spin-up time of integrated surface water–groundwater models

H. Ajami et al.

Correspondence to: H. Ajami (h.ajami@unsw.edu.au)



2

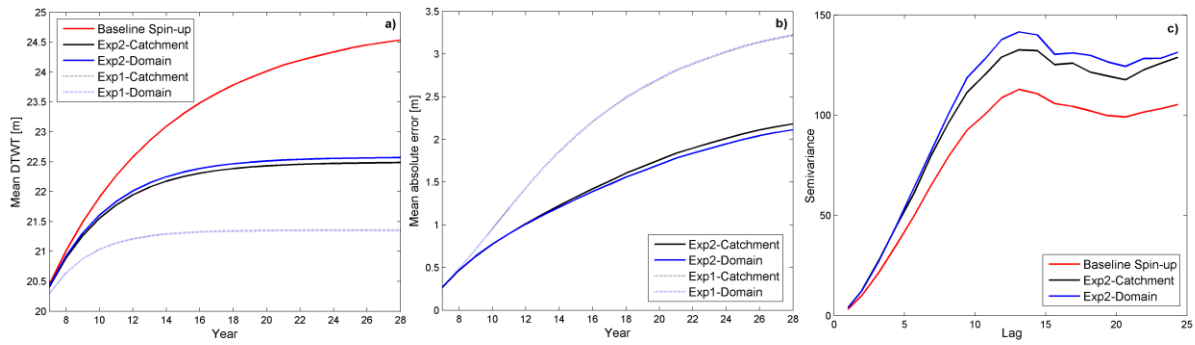
3 **Fig. S1.** Delineating four regions in the modelling domain according to percent changes in
4 mean annual DTWT values from six cycles of ParFlow.CLM simulations. Red region
5 represents grid cells where percent changes in DTWT values oscillate between negative and
6 positive values, while the green region corresponds to grid cells with stable decline in DTWT.
7 In grey regions, percent changes in DTWT have reached zero and black region corresponds to
8 the channel network, where DTWT is zero.

9

10

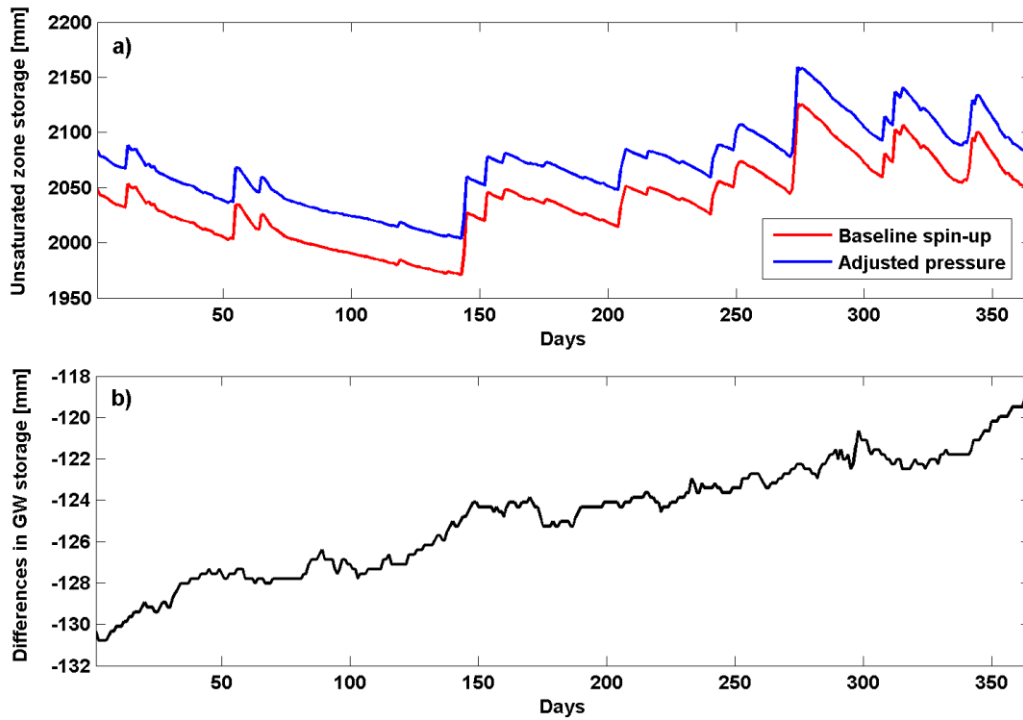
11

12



1
2
3
4
5
6
7
8
9
10
11
12
13

Fig. S2. a) Comparison between the simulated mean annual DTWT obtained from the baseline spin-up approach of ParFlow.CLM and empirical DTWT functions for the Baldry sub-catchment. The single exponential model was formulated using the domain and catchment averaged data from spin-up simulations 2 to 6; b) estimated mean absolute error based on simulated DTWT from the baseline spin-up together with both catchment and domain averaged single and double exponential functions; and c) experimental semi-variograms of mean annual DTWT from ParFlow.CLM equilibrium year (after 28 years of simulations) and DTWT from catchment and domain averaged double exponential functions. DTWT distributions from the DTWT functions had higher variances relative to the baseline simulation. Exp1 and Exp2 refer to single and double exponential functions respectively.



1
 2 **Fig. S3.** a) Comparison of unsaturated zone storage dynamics of the equilibrium year
 3 obtained from the hybrid spin-up approach and the baseline spin-up simulations in Baldry
 4 sub-catchment. b) Differences in groundwater storages of the equilibrium year obtained from
 5 the baseline spin-up simulation and the hybrid approach.

6