

Supplement of Hydrol. Earth Syst. Sci., 18, 2975–2991, 2014
<http://www.hydrol-earth-syst-sci.net/18/2975/2014/>
doi:10.5194/hess-18-2975-2014-supplement
© Author(s) 2014. CC Attribution 3.0 License.



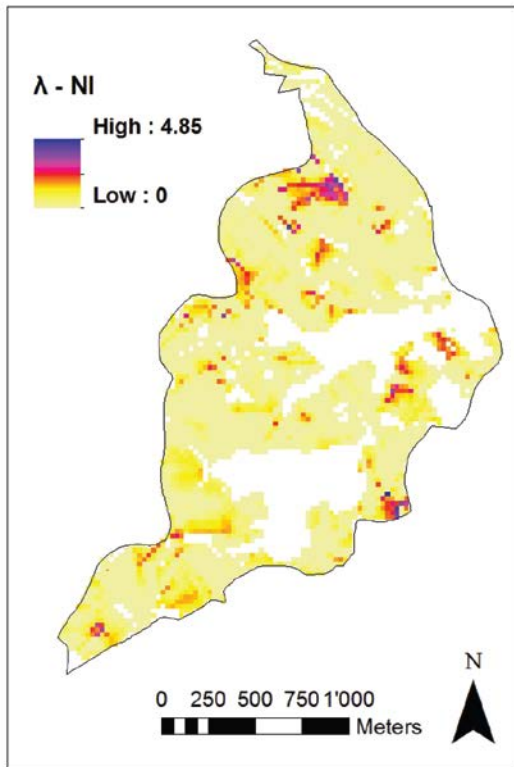
Supplement of

A comparison of three simple approaches to identify critical areas for runoff and dissolved reactive phosphorus losses

C. Hahn et al.

Correspondence to: C. Hahn (claudia.hahn@alumni.ethz.ch)

Lippenrütibach catchment



Stägbach catchment

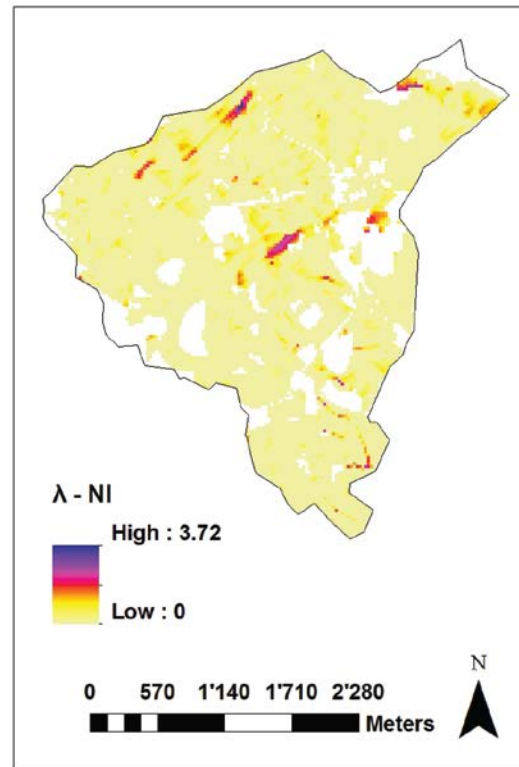


Fig. S1: Spatial distribution of the difference between Network Index (NI) and Topographic Index (λ) in the Lippenrütibach and the Stägbach catchment, indicating where connectivity might be a limiting factor for P loss into streams within the catchment.