



## *Corrigendum to*

# **“Calibration of aerodynamic roughness over the Tibetan Plateau with Ensemble Kalman Filter analysed heat flux” published in Hydrol. Earth Syst. Sci., 16, 4291–4302, 2012**

**J. H. Lee<sup>1,2</sup>, J. Timmermans<sup>2</sup>, Z. Su<sup>2</sup>, and M. Mancini<sup>1</sup>**

<sup>1</sup>Politecnico di Milano, Piazza Leonardo da Vinci 32, Milan, Italy

<sup>2</sup>ITC, Geo-Information Science and Earth Observation of the University of Twente, Enschede, the Netherlands

*Correspondence to:* M. Mancini (marco.mancini@polimi.it)

We would like to inform you that there is a mistake in the following sentence on p. 4295 (left column):

In EnKF, the key to success is the quality of observations used as a true field (a priori).

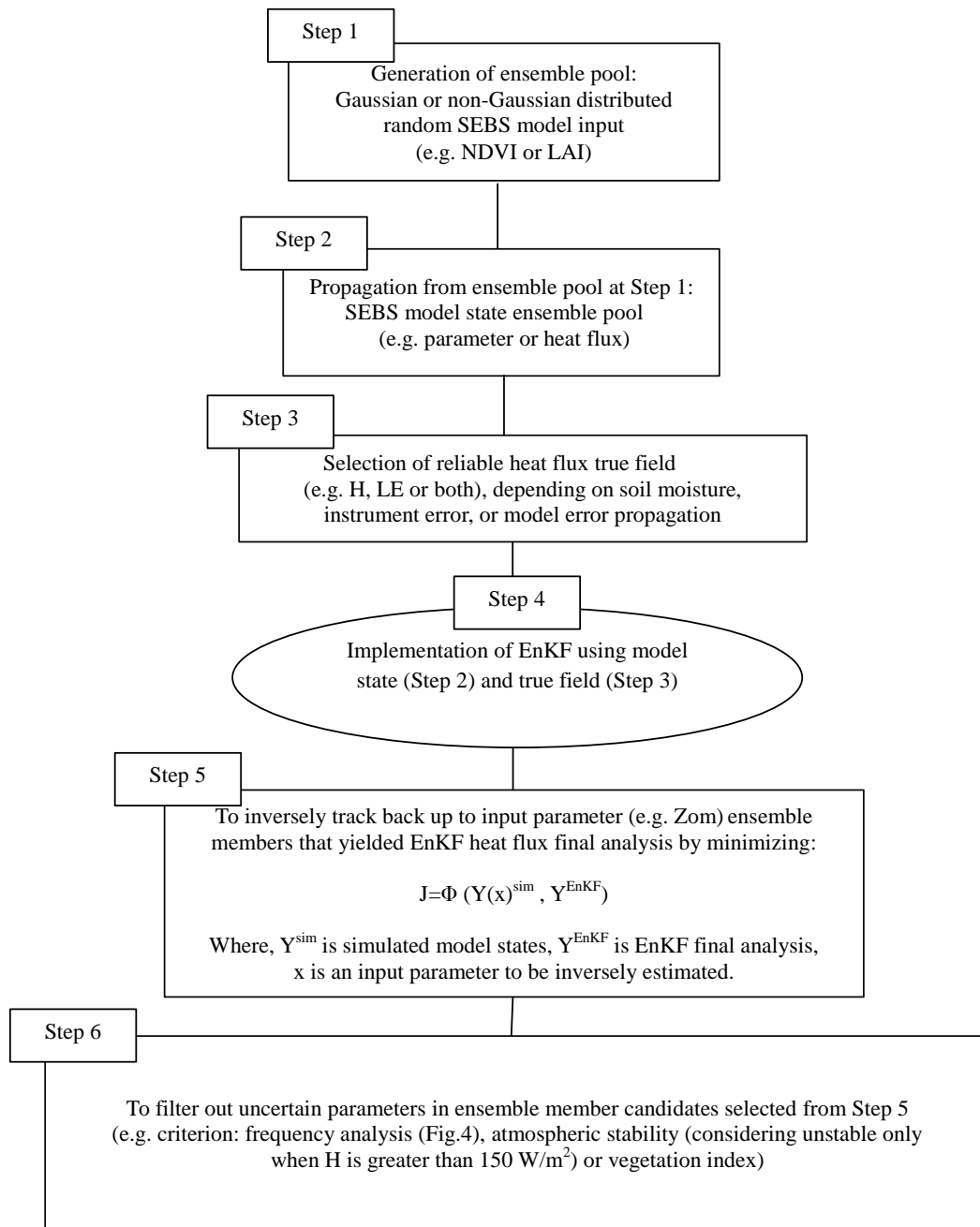
The correct sentence should read:

In EnKF, the key to success is the quality of observations used as a true field.

In addition, the following sentence on p. 4296 (end of left column) should be deleted:

DEnKF was chosen in order to update ensemble SEBS heat flux pool with BREB estimates considered as “a priori”.

There is also a mistake in Fig. 2 (Step 5) on p. 4294. You will find the correct Fig. 2 on the following page.



**Fig. 2.** Conceptual diagram for determination of aerodynamic roughness via EnKF.