

SUPPLEMENTARY MATERIAL (A): TABLE OF ITEMS

Table A. List of the 309 items considered in the analysis, with corresponding FAOSTAT identification number, description, category to which it belongs, and presence/absence in the sub-list of items considered for the internal production (only primary crop products and derived animal products are included -if present in the complete list-).

id	crop	Category	Production	id	crop	Category	Production
15	Wheat	plant-based	yes	128	Cassava Dried	plant-based	no
16	Flour of Wheat	plant-based	no	129	Cassava Starch	plant-based	no
18	Macaroni	plant-based	no	135	Yautia (cocoyam)	plant-based	yes
20	Bread	plant-based	no	136	Taro (cocoyam)	plant-based	yes
27	Rice, paddy	plant-based	yes	137	Yams	plant-based	yes
28	Rice Husked	plant-based	no	149	Roots and Tubers, nes	plant-based	yes
31	Rice Milled	plant-based	no	150	Flour of Roots and Tubers	plant-based	no
32	Rice Broken	plant-based	no	156	Sugar cane	luxury	yes
38	Rice Flour	plant-based	no	157	Sugar beet	luxury	yes
44	Barley	plant-based	yes	160	Maple Sugar and Syrups	luxury	yes
46	Barley Pearled	plant-based	no	161	Sugar crops, nes	luxury	yes
48	Barley Flour and Grits	plant-based	no	162	Sugar Raw Centrifugal	luxury	no
49	Malt	plant-based	no	164	Sugar Refined	luxury	no
51	Beer of Barley	luxury	no	165	Molasses	luxury	no
56	Maize	plant-based	yes	166	Other Fructose and Syrup	luxury	yes
58	Flour of Maize	plant-based	no	167	Sugar, nes	luxury	no
60	Maize oil	plant-based	no	171	Sugar flavoured	luxury	no
71	Rye	plant-based	yes	172	Glucose and Dextrose	luxury	yes
72	Flour of Rye	plant-based	no	176	Beans, dry	plant-based	no
75	Oats	plant-based	yes	181	Broad beans, horse beans, dry	plant-based	yes
76	Oats Rolled	plant-based	no	187	Peas, dry	plant-based	no
79	Millet	plant-based	yes	191	Chick peas	plant-based	yes
83	Sorghum	plant-based	yes	195	Cow peas, dry	plant-based	yes
89	Buckwheat	plant-based	yes	197	Pigeon peas	plant-based	yes
92	Quinoa	plant-based	yes	201	Lentils	plant-based	yes
94	Fonio	plant-based	yes	203	Bambara beans	plant-based	yes
97	Triticale	plant-based	yes	205	Vetches	plant-based	yes
101	Canary seed	plant-based	yes	210	Lupins	plant-based	yes
103	Mixed grain	plant-based	yes	211	Pulses, nes	plant-based	yes
108	Cereals, nes	plant-based	yes	212	Flour of Pulses	plant-based	no
116	Potatoes	plant-based	yes	216	Brazil nuts, with shell	plant-based	yes
117	Potatoes Flour	plant-based	no	217	Cashew nuts, with shell	plant-based	yes
118	Frozen Potatoes	plant-based	no	220	Chestnuts	plant-based	yes
120	Potato Offals	plant-based	no	221	Almonds, with shell	plant-based	yes
212	Flour of Pulses	plant-based	no	289	Sesame seed	plant-based	yes
216	Brazil nuts, with shell	plant-based	yes	290	Sesame oil	plant-based	no
217	Cashew nuts, with shell	plant-based	yes	292	Mustard seed	plant-based	yes
220	Chestnuts	plant-based	yes	296	Poppy seed	plant-based	yes
221	Almonds, with shell	plant-based	yes	299	Melonseed	plant-based	yes
222	Walnuts, with shell	plant-based	yes	329	Cottonseed	non edible	yes
223	Pistachios	plant-based	yes	331	Cottonseed oil	plant-based	no
224	Kolanuts	plant-based	yes	332	Cake of Cottonseed	non edible	no

Table A. (continue...)

id	crop	Category	Production	id	crop	Category	Production
225	Hazelnuts, with shell	plant-based	yes	333	Linseed	non edible	yes
226	Arecanuts	luxury	yes	334	Linseed oil	non edible	no
231	Almonds Shelled	plant-based	no	335	Cake of Linseed	non edible	no
232	Walnuts Shelled	plant-based	no	336	Hempseed	plant-based	yes
233	Hazelnuts Shelled	plant-based	no	339	Oilseeds, Nes	plant-based	yes
234	Nuts, nes	plant-based	yes	340	Oil of vegetable origin, nes	plant-based	no
235	Prepared Nuts (Exc.Groundnuts)	plant-based	no	358	Cabbages and other brassicas	plant-based	yes
236	Soybeans	plant-based	yes	366	Artichokes	plant-based	yes
237	Soybean oil	plant-based	no	367	Asparagus	plant-based	yes
238	Cake of Soybeans	plant-based	no	372	Lettuce and chicory	plant-based	yes
239	Soya Sauce	plant-based	no	373	Spinach	plant-based	yes
240	Soya Paste	plant-based	no	388	Tomatoes	plant-based	yes
241	Soya curd	plant-based	no	389	Tomatojuice Concentrated	plant-based	no
242	Groundnuts, with shell	plant-based	yes	390	Juice of Tomatoes	plant-based	no
243	Groundnuts Shelled	plant-based	no	391	Paste of Tomatoes	plant-based	no
244	Groundnut oil	plant-based	no	392	Tomato Peeled	plant-based	no
249	Coconuts	plant-based	yes	393	Cauliflowers and broccoli	plant-based	yes
251	Copra	plant-based	no	394	Pumpkins, squash and gourds	plant-based	yes
252	Coconut (copra) oil	plant-based	no	397	Cucumbers and gherkins	plant-based	yes
256	Palm kernels	plant-based	yes	399	Eggplant-baseds (aubergines)	plant-based	yes
257	Palm oil	plant-based	no	401	Chillies and peppers, green	plant-based	yes
258	Palm kernel oil	plant-based	no	402	Onions (inc. shallots), green	plant-based	yes
259	Cake of Palm Kernel	plant-based	no	403	Onions, dry	plant-based	no
260	Olives	plant-based	yes	406	Garlic	plant-based	yes
261	Olive oil, virgin	plant-based	no	414	Beans, green	plant-based	yes
262	Olives Preserved	plant-based	no	417	Peas, green	plant-based	yes
263	Karite Nuts (Sheanuts)	plant-based	yes	423	String beans	plant-based	yes
264	Butter of Karite Nuts	plant-based	no	426	Carrots and turnips	plant-based	yes
265	Castor oil seed	non edible	yes	430	Okra	plant-based	yes
266	Oil of Castor Beans	non edible	no	446	Maize, green	plant-based	yes
267	Sunflower seed	plant-based	yes	447	Sweet Corn Frozen	plant-based	yes
268	Sunflower oil	plant-based	no	460	Veg.Prod.Fresh Or Dried	plant-based	no
269	Sunflower Cake	non edible	no	461	Carobs	plant-based	yes
270	Rapeseed	plant-based	yes	463	Vegetables fresh nes	plant-based	yes
271	Rapeseed oil	plant-based	no	466	Juice of Vegetables Nes	plant-based	no
272	Cake of Rapeseed	non edible	no	469	Vegetables Dehydrated	plant-based	no
273	Olive Residues	non edible	no	471	Vegetables in Vinegar	plant-based	no
278	Oil of Jojoba	luxury	yes	472	Vegetables Preserved Nes	plant-based	no
280	Safflower seed	plant-based	yes	473	Vegetable Frozen	plant-based	no
486	Bananas	plant-based	yes	603	Fruit, tropical fresh nes	plant-based	yes
489	Plantains	plant-based	yes	604	Fruit Tropical Dried Nes	plant-based	no
490	Oranges	plant-based	yes	619	Fruit Fresh Nes	plant-based	yes
491	Orange juice, single strength	plant-based	no	622	Fruit Juice Nes	plant-based	no
495	Tangerines, mandarins, clem.	plant-based	yes	656	Coffee, green	luxury	yes
497	Lemons and limes	plant-based	yes	657	Coffee Roasted	luxury	no
507	Grapefruit (inc. pomelos)	plant-based	yes	661	Cocoa beans	luxury	yes
509	Juice of Grapefruit	plant-based	no	662	Cocoa Paste	luxury	no

Table A. (continue...)

id	crop	Category	Production	id	crop	Category	Production
512	Citrus fruit, nes	plant-based	yes	663	Cocoahusks;Shell	non edible	no
513	Citrus juice, single strength	plant-based	no	664	Cocoa Butter	luxury	no
515	Apples	plant-based	yes	665	Cocoapowder and Cake	luxury	no
517	Cider Etc	plant-based	no	666	Chocolate Prsnes	luxury	no
518	Apple juice, single strength	plant-based	no	667	Tea	luxury	yes
521	Pears	plant-based	yes	677	Hops	luxury	yes
526	Apricots	plant-based	yes	687	Pepper (Piper spp.)	luxury	yes
527	Dry Apricots	plant-based	no	689	Chillies and peppers, dry	luxury	no
530	Sour cherries	plant-based	yes	692	Vanilla	luxury	yes
531	Cherries	plant-based	yes	693	Cinnamon (canella)	luxury	yes
534	Peaches and nectarines	plant-based	yes	698	Cloves	luxury	yes
536	Plums and sloes	plant-based	yes	702	Nutmeg, mace and cardamoms	luxury	yes
537	Plums Dried (Prunes)	plant-based	no	711	Anise, badian, fennel, corian.	luxury	yes
541	Stone fruit, nes	non edible	yes	720	Ginger	luxury	yes
544	Strawberries	plant-based	yes	723	Spices, nes	luxury	yes
547	Raspberries	plant-based	yes	748	Peppermint	plant-based	yes
549	Gooseberries	plant-based	yes	767	Cotton lint	non edible	yes
550	Currants	plant-based	yes	768	Cotton Carded,Combed	non edible	no
552	Blueberries	plant-based	yes	769	Cotton Waste	non edible	no
554	Cranberries	plant-based	yes	770	Cotton Linter	non edible	yes
558	Berries Nes	plant-based	yes	773	Flax fibre and tow	non edible	yes
560	Grapes	plant-based	yes	774	Flax Tow Waste	non edible	no
561	Raisins	plant-based	no	777	Hemp Tow Waste	non edible	yes
562	Grape Juice	plant-based	no	780	Jute	non edible	yes
563	Must of Grapes	luxury	no	782	Other Bastfibres	non edible	yes
564	Wine	luxury	no	788	Ramie	non edible	yes
565	Vermouths and Similar	luxury	no	789	Sisal	non edible	yes
566	Marc of Grapes	luxury	no	800	Agave Fibres Nes	non edible	yes
567	Watermelons	plant-based	yes	809	Manila Fibre (Abaca)	non edible	yes
568	Other melons (inc.cantaloupes)	plant-based	yes	821	Fibre Crops Nes	non edible	yes
569	Figs	plant-based	yes	826	Tobacco, unmanufactured	luxury	yes
571	Mangoes, mangosteens, guavas	plant-based	yes	836	Natural rubber	non edible	yes
572	Avocados	plant-based	yes	866	Cattle	animal-based	no
574	Pineapples	plant-based	yes	867	Cattle meat	animal-based	yes
576	Juice of Pineapples	plant-based	no	868	Offals of cattle, edible	animal-based	yes
577	Dates	plant-based	yes	870	Meat-Cattle, boneless	animal-based	yes
591	Cashew apple	plant-based	yes	872	Meat of Beef,Drd, SltD,Smkd	animal-based	yes
592	Kiwi fruit	plant-based	yes	874	Sausage Beef and Veal	animal-based	yes
600	Papayas	plant-based	yes	882	Cow milk, whole, fresh	animal-based	yes
886	Butter Cow Milk	animal-based	no	1035	Pig meat	animal-based	yes
888	Milk Skm of Cows	animal-based	no	1036	Offals of Pigs, Edible	animal-based	yes
889	Milk Whole Cond	animal-based	no	1037	Fat of Pigs	animal-based	yes
890	Whey Condensed	animal-based	no	1039	Bacon and Ham	animal-based	no
891	Yoghurt	animal-based	no	1041	Sausages of Pig Meat	animal-based	no
893	Butterm.,CurdL,Acid.Milk	animal-based	no	1042	Prep of Pig Meat	animal-based	no
897	Milk Whole Dried	animal-based	no	1057	Chickens	animal-based	yes
898	Milk Skimmed Dry	animal-based	no	1062	Hen eggs, in shell	animal-based	yes

Table A. (continue...)

id	crop	Category	Production	id	crop	Category	Production
901	Cheese of Whole Cow Milk	animal-based	no	1063	Eggs Liquid	animal-based	no
905	Whey Cheese	animal-based	no	1064	Eggs Dried	animal-based	no
907	Processed Cheese	animal-based	no	1069	Duck meat	animal-based	yes
909	Prod.of Nat.Milk Constit	animal-based	no	1073	Goose and guinea fowl meat	animal-based	yes
919	Cattle hides	non edible	yes	1080	Turkey meat	animal-based	yes
920	Hides Wet Salted Cattle	non edible	no	1091	Other bird eggs,in shell	animal-based	yes
921	Hidesdry S.Cattle	non edible	no	1096	Horses	animal-based	no
976	Sheep	animal-based	no	1097	Horse meat	animal-based	yes
977	Sheep meat	animal-based	yes	1100	Hair of Horses	non edible	yes
978	Offals of Sheep,Edible	animal-based	yes	1103	Hides Wet Salted Horses	non edible	no
984	Cheese of Sheep Milk	animal-based	yes	1104	Hides Dry Slt Horses	non edible	no
998	Skins Nes Sheep	non edible	yes	1105	Hides Unsp Horse	non edible	yes
999	Skins With Wool Sheep	non edible	yes	1107	Asses	animal-based	yes
1016	Goats	animal-based	no	1110	Mules	animal-based	yes
1017	Goat meat	animal-based	yes	1159	Offals other camelids	animal-based	yes
1018	Offals of Goats, Edible	animal-based	yes	1187	Cocoon Unr. and Waste	non edible	yes
1021	Cheese of Goat Mlk	animal-based	yes	1219	Hair Coarse Nes	non edible	yes
1025	Goatskins	non edible	yes	1232	Food Prep Nes	plant-based	no
1034	Pigs	animal-based	no				

SUPPLEMENTARY MATERIAL (B): OTHER COUNTRIES

AUSTRALIA

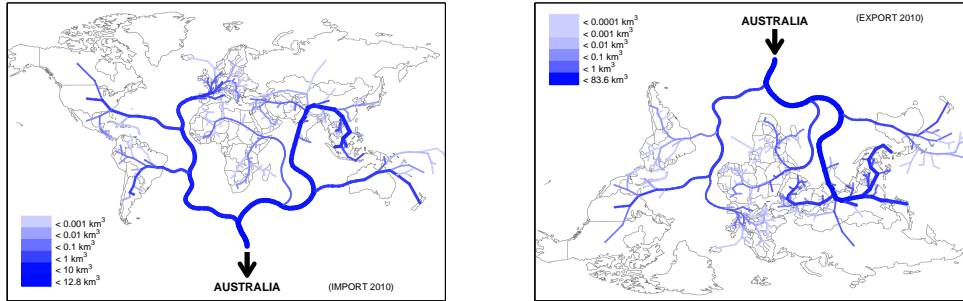


Fig. I.a. The virtual water river/delta flowing to/from the country in 2010.

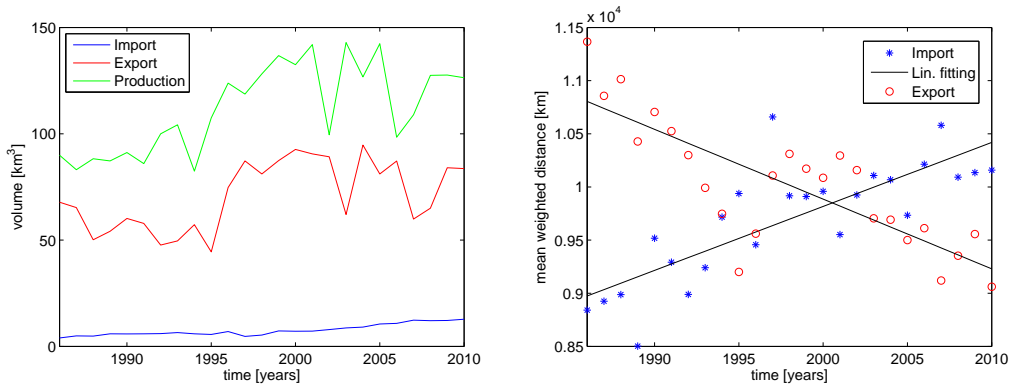


Fig. I.b. Virtual water balance of the country (left) and mean distance travelled by virtual water flowing to/from the country (right), in the period 1986-2010.

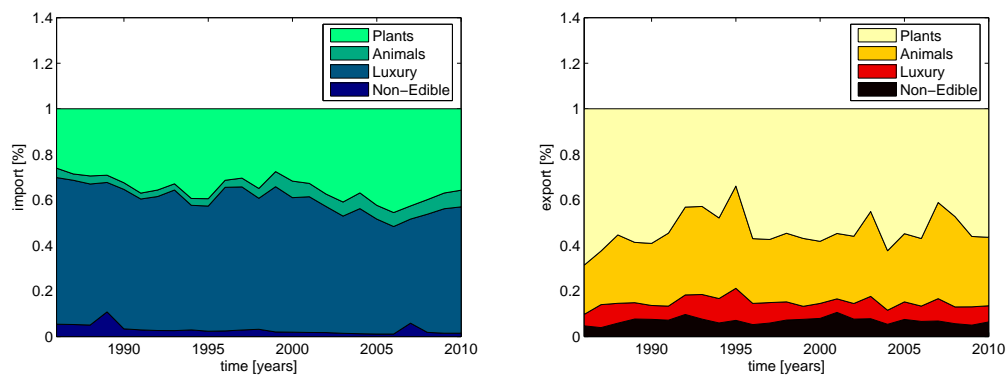


Fig. I.c. Contributions of each category to the total import (left) and export (right) of the country in the period 1986-2010.

BRAZIL

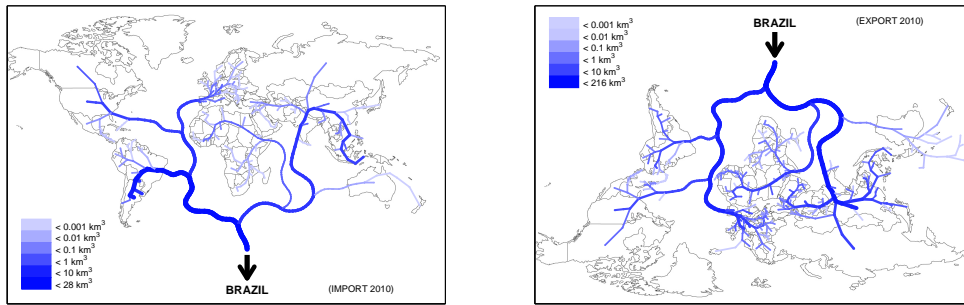


Fig. II.a. The virtual water river/delta flowing to/from the country in 2010.

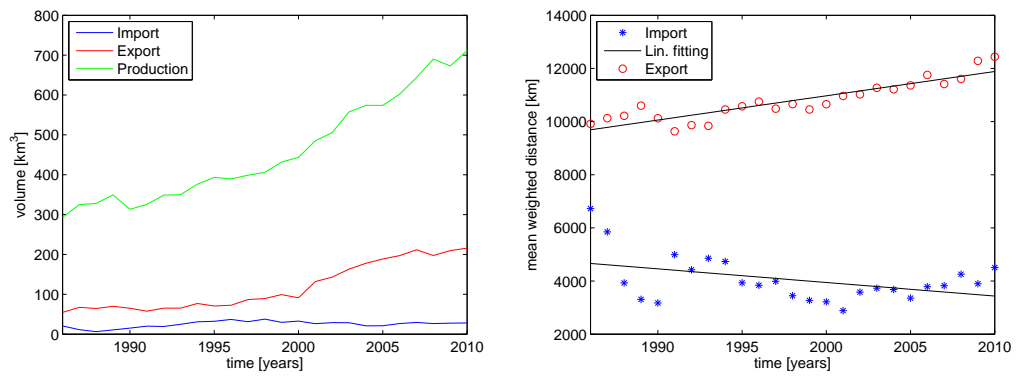


Fig. II.b. Virtual water balance of the country (left) and mean distance travelled by virtual water flowing to/from the country (right), in the period 1986-2010.

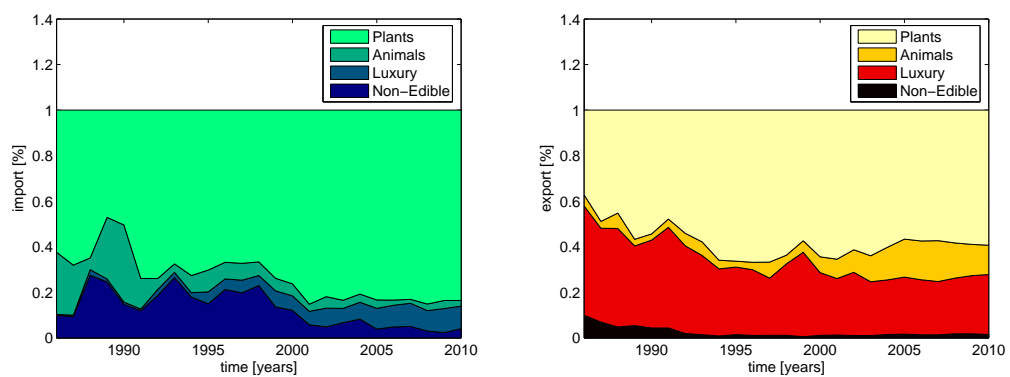


Fig. II.c. Contributions of each category to the total import (left) and export (right) of the country in the period 1986-2010.

CHINA

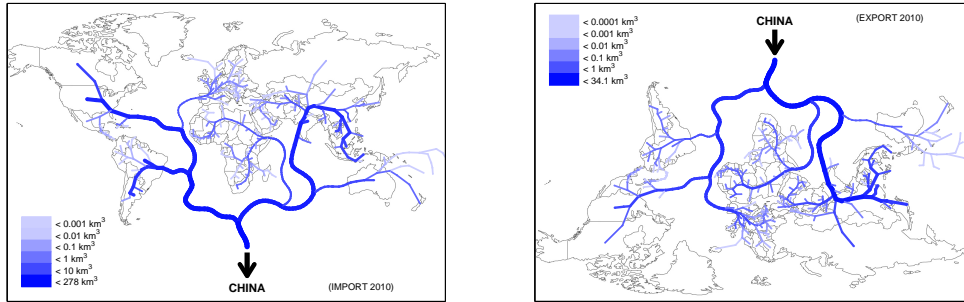


Fig. III.a. The virtual water river/delta flowing to/from the country in 2010.

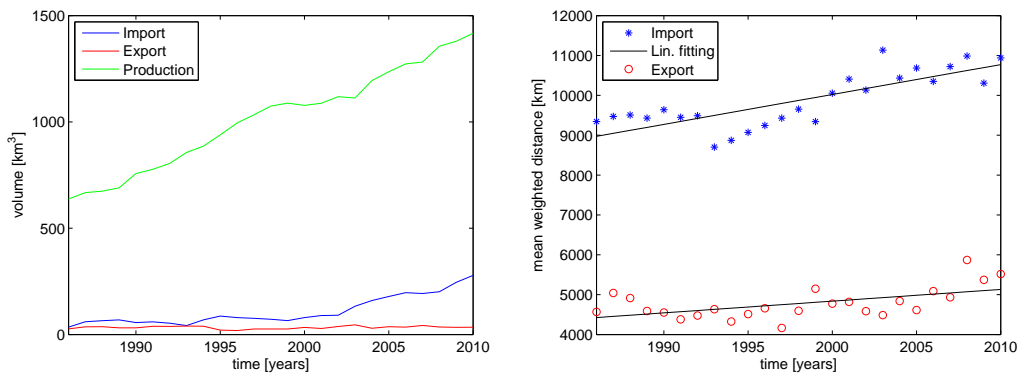


Fig. III.b. Virtual water balance of the country (left) and mean distance travelled by virtual water flowing to/from the country (right), in the period 1986-2010.

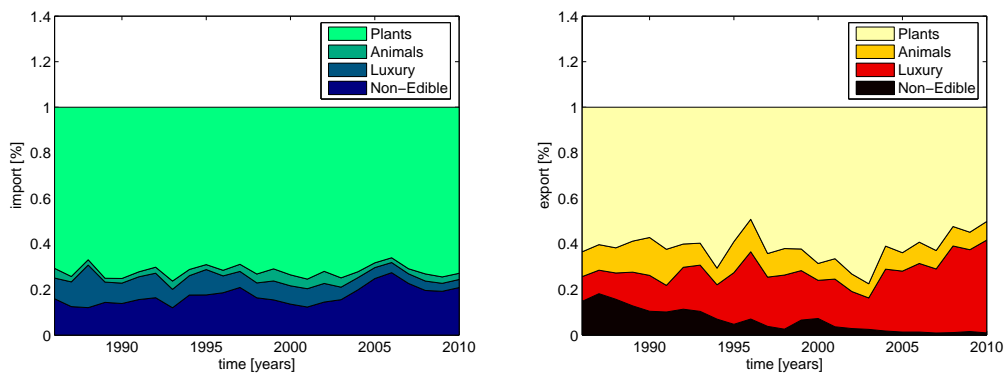


Fig. III.c. Contributions of each category to the total import (left) and export (right) of the country in the period 1986-2010.

EGYPT

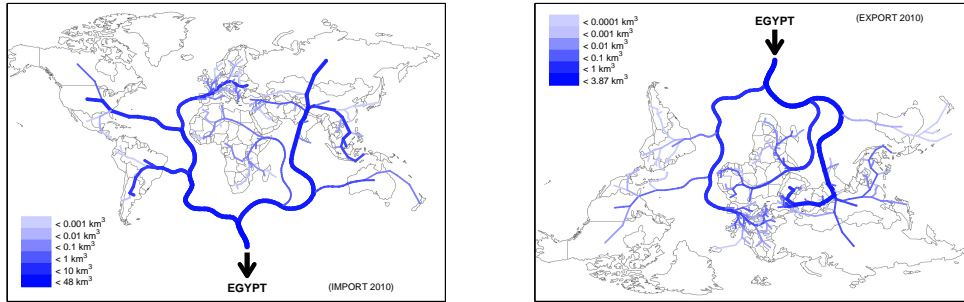


Fig. IV.a. The virtual water river/delta flowing to/from the country in 2010.

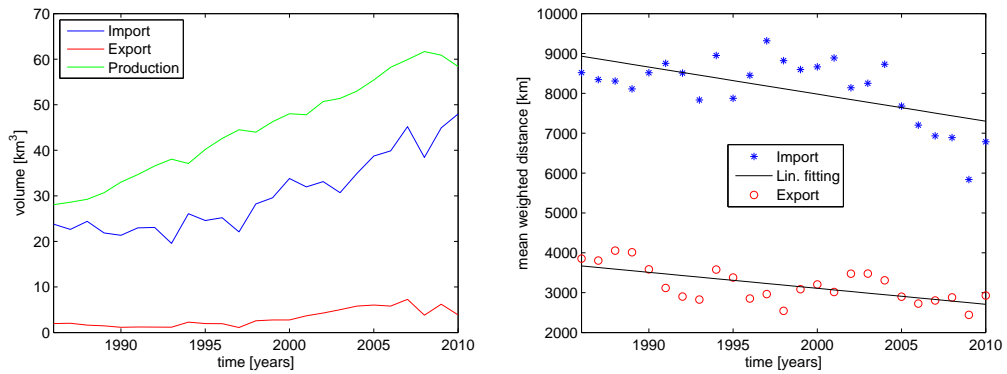


Fig. IV.b. Virtual water balance of the country (left) and mean distance travelled by virtual water flowing to/from the country (right), in the period 1986-2010.

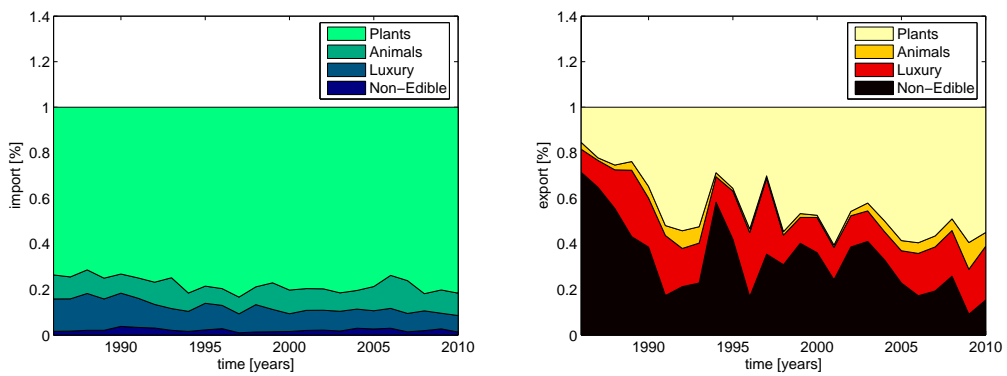


Fig. IV.c. Contributions of each category to the total import (left) and export (right) of the country in the period 1986-2010.

FRANCE

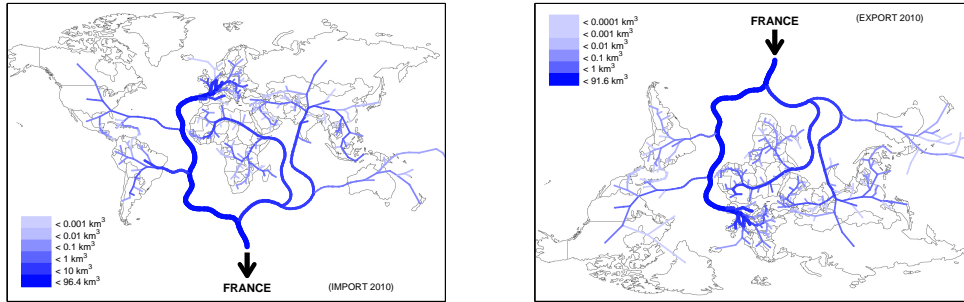


Fig. V.a. The virtual water river/delta flowing to/from the country in 2010.

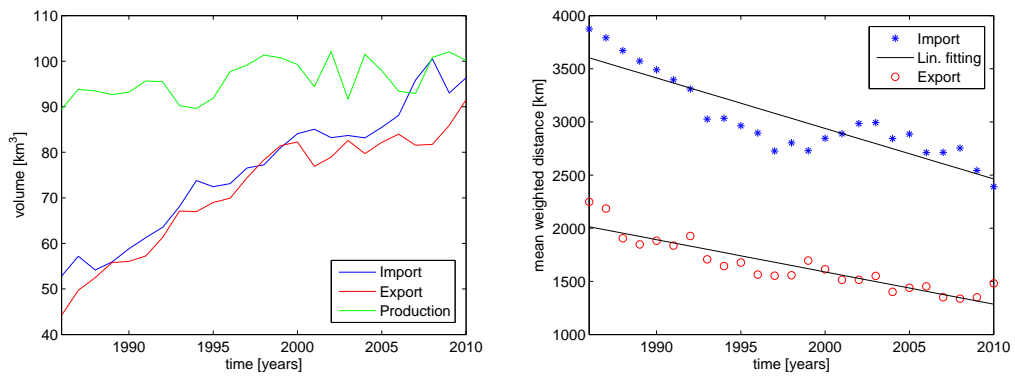


Fig. V.b. Virtual water balance of the country (left) and mean distance travelled by virtual water flowing to/from the country (right), in the period 1986-2010.

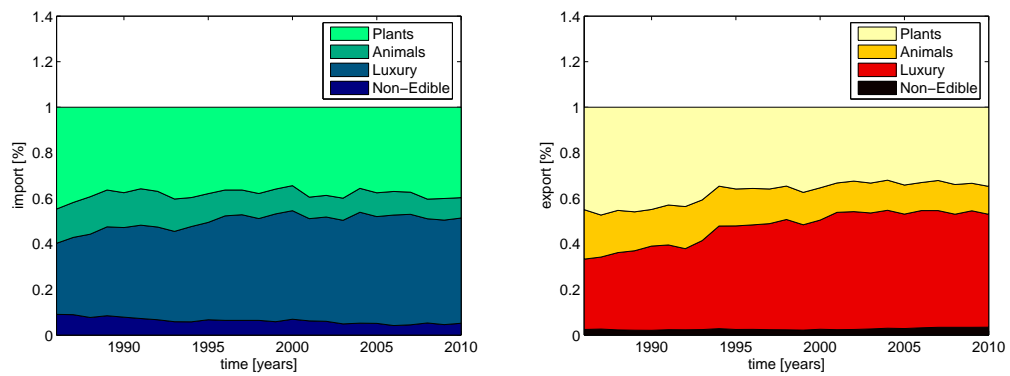


Fig. V.c. Contributions of each category to the total import (left) and export (right) of the country in the period 1986-2010.

GERMANY

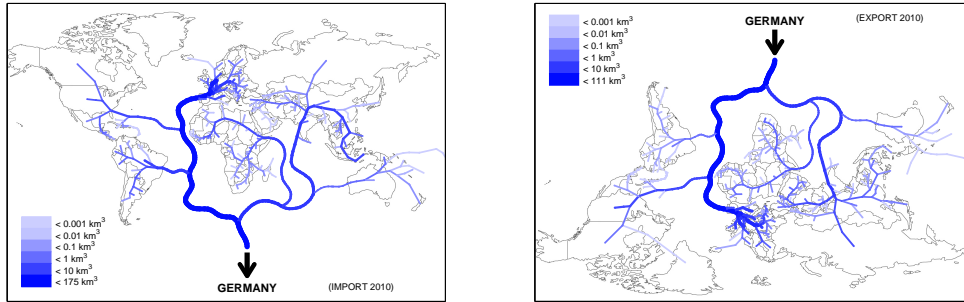


Fig. VI.a. The virtual water river/delta flowing to/from the country in 2010.

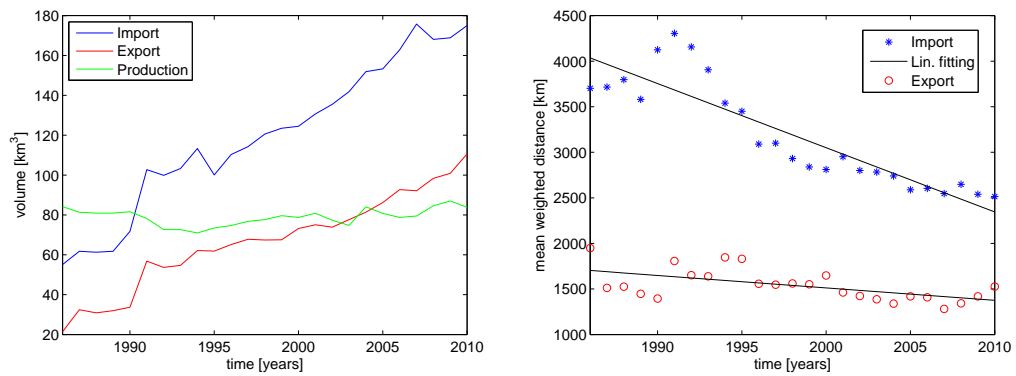


Fig. VI.b. Virtual water balance of the country (left) and mean distance travelled by virtual water flowing to/from the country (right), in the period 1986-2010.

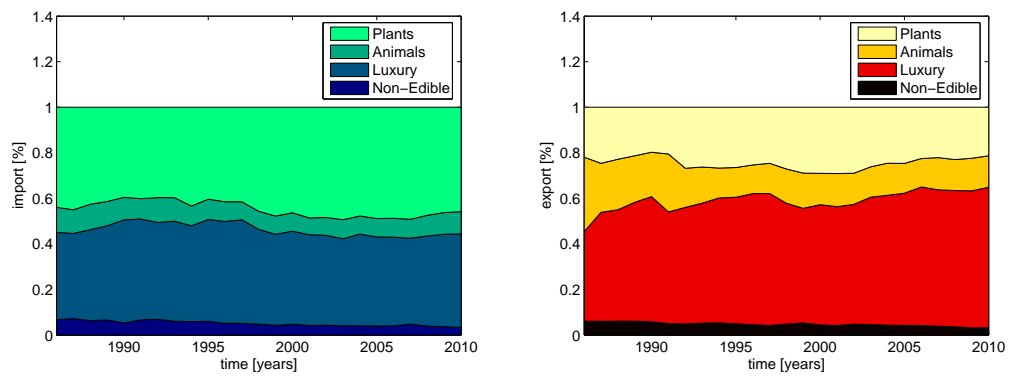


Fig. VI.c. Contributions of each category to the total import (left) and export (right) of the country in the period 1986-2010.

INDIA

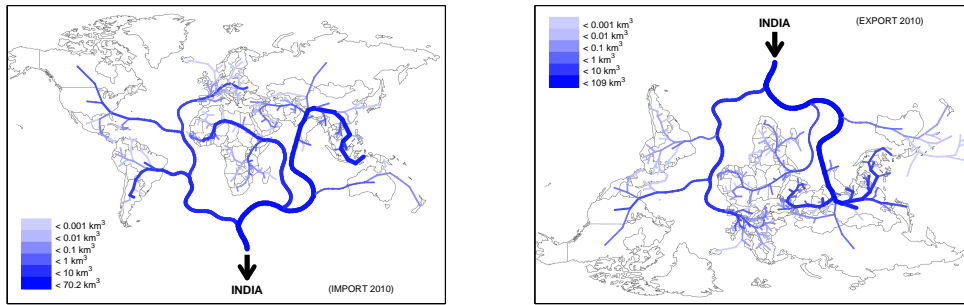


Fig. VII.a. The virtual water river/delta flowing to/from the country in 2010.

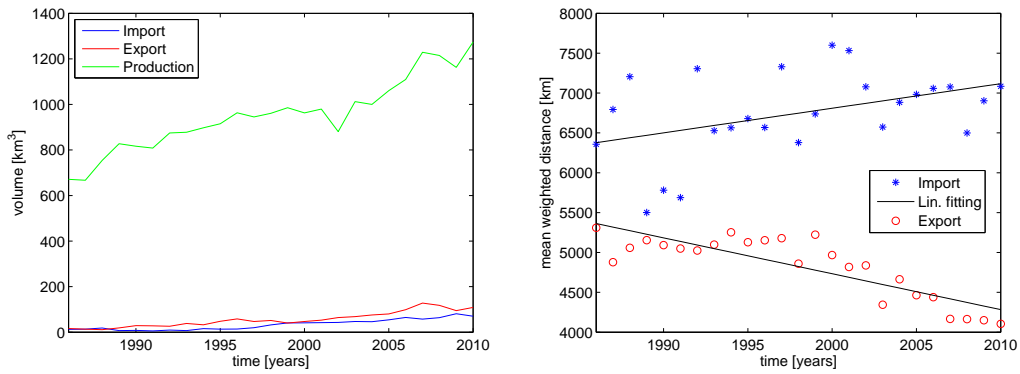


Fig. VII.b. Virtual water balance of the country (left) and mean distance travelled by virtual water flowing to/from the country (right), in the period 1986-2010.

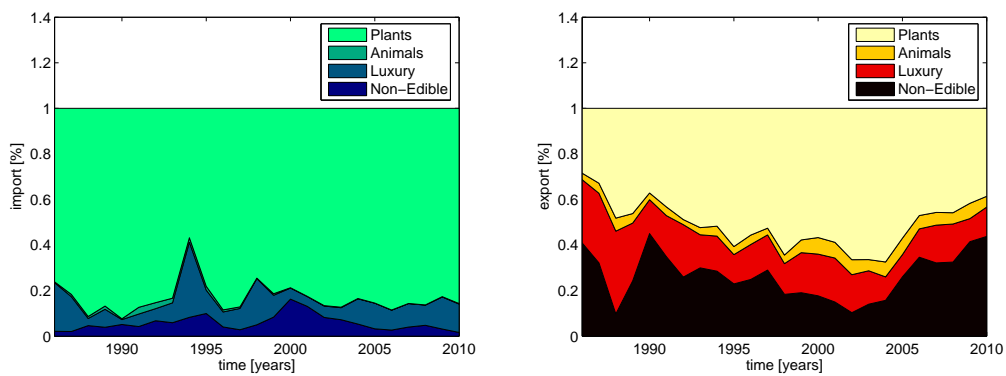


Fig. VII.c. Contributions of each category to the total import (left) and export (right) of the country in the period 1986-2010.

INDONESIA

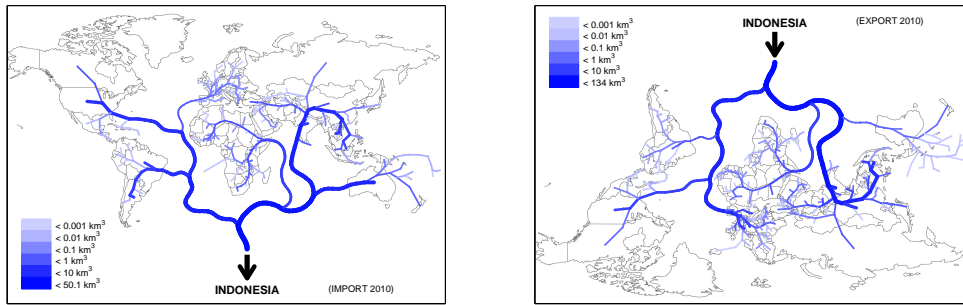


Fig. VIII.a. The virtual water river/delta flowing to/from the country in 2010.

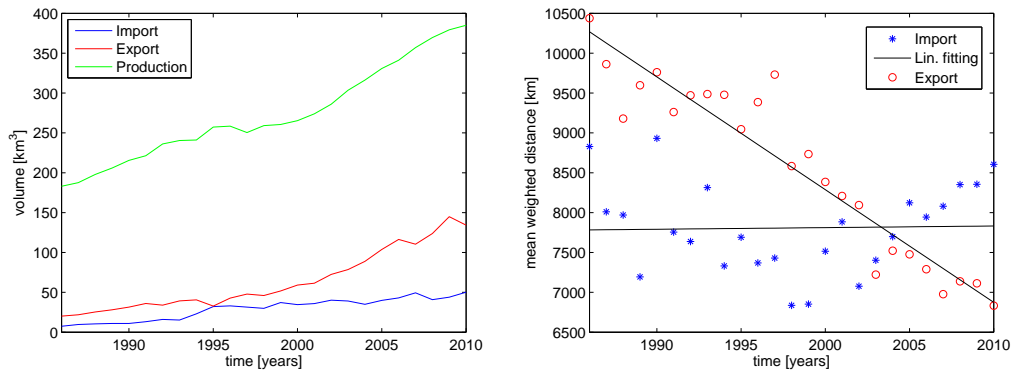


Fig. VIII.b. Virtual water balance of the country (left) and mean distance travelled by virtual water flowing to/from the country (right), in the period 1986-2010.

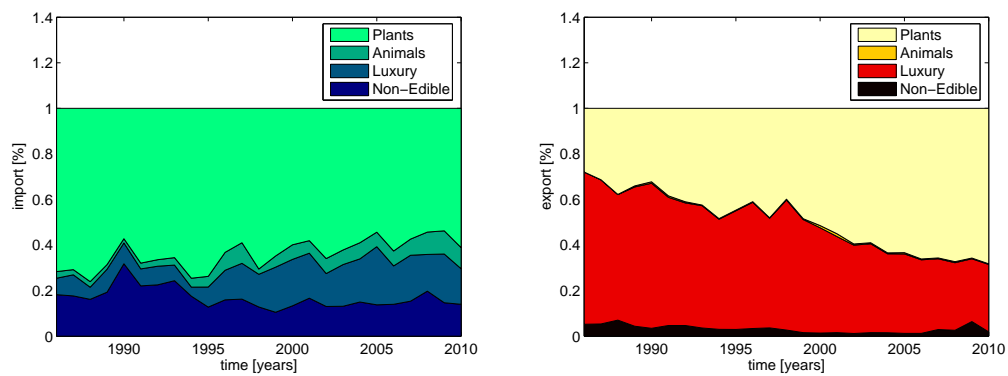


Fig. VIII.c. Contributions of each category to the total import (left) and export (right) of the country in the period 1986-2010.

JAPAN

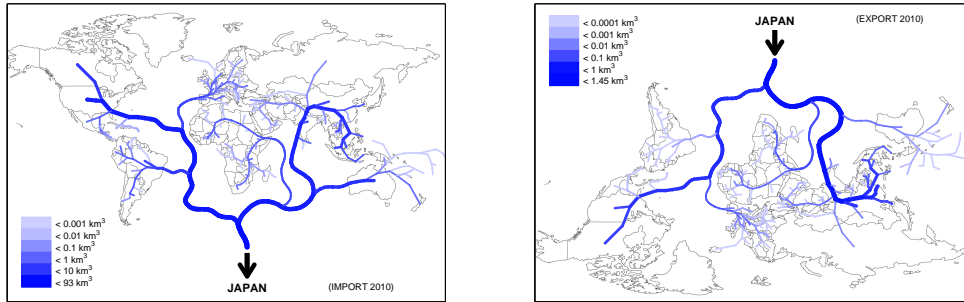


Fig. IX.a. The virtual water river/delta flowing to/from the country in 2010.

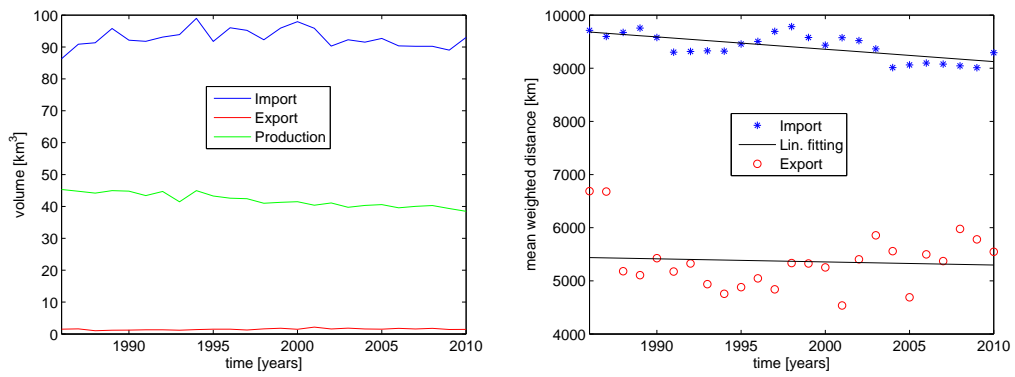


Fig. IX.b. Virtual water balance of the country (left) and mean distance travelled by virtual water flowing to/from the country (right), in the period 1986-2010.

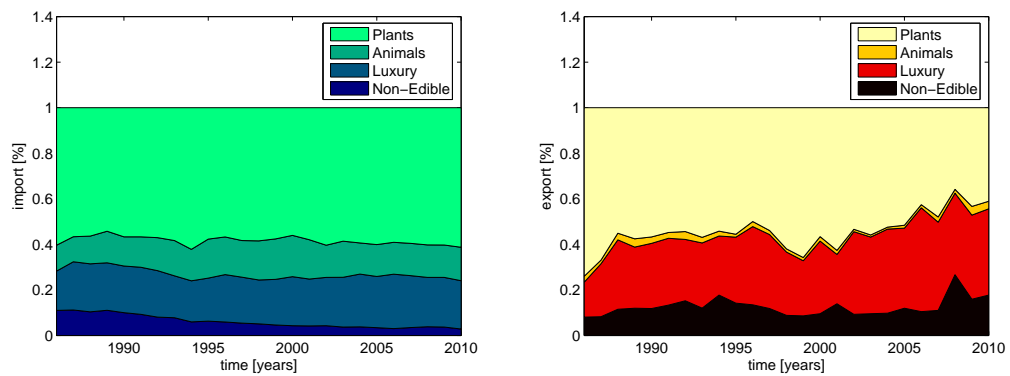


Fig. IX.c. Contributions of each category to the total import (left) and export (right) of the country in the period 1986-2010.

UNITED STATES OF AMERICA

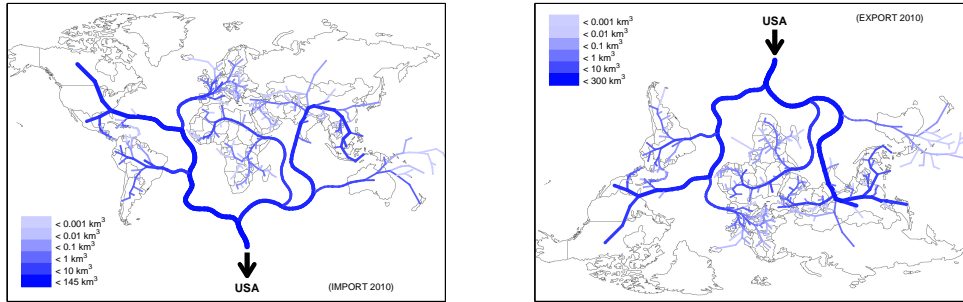


Fig. X.a. The virtual water river/delta flowing to/from the country in 2010.

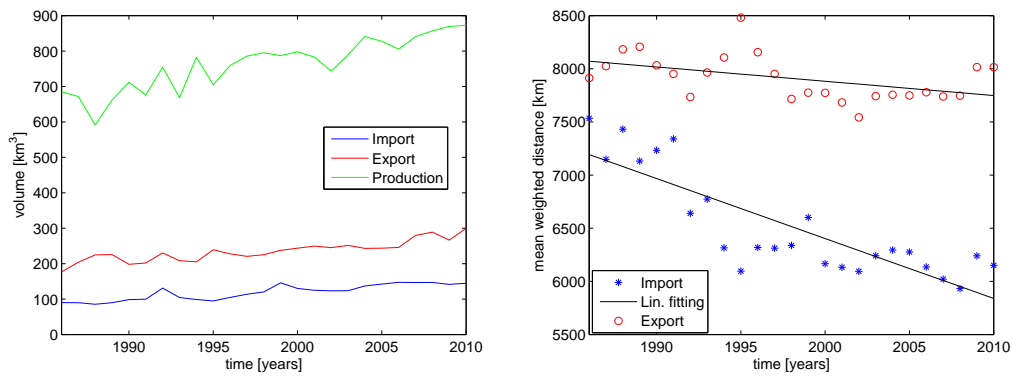


Fig. X.b. Virtual water balance of the country (left) and mean distance travelled by virtual water flowing to/from the country (right), in the period 1986-2010.

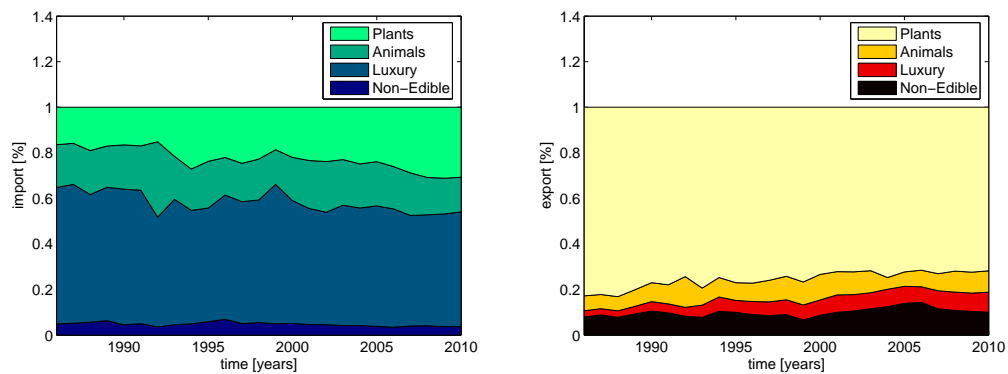


Fig. X.c. Contributions of each category to the total import (left) and export (right) of the country in the period 1986-2010.